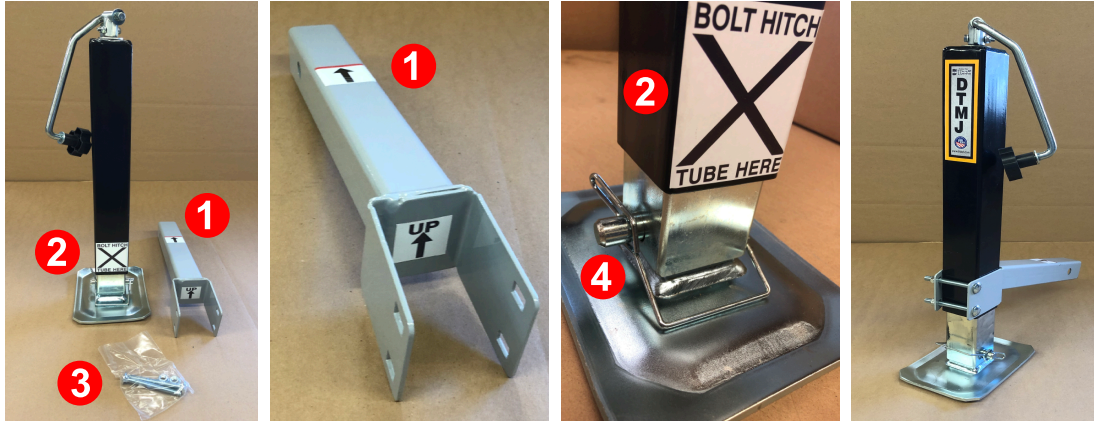




INSTALLATION INSTRUCTIONS

D'TTACH MAINTENANCE JACK (DTMJ)



TOOLS REQUIRED
9/16" Wrench

* HITCH / HITCH PINS NOT INCLUDED

**Always
make sure hitch
tube is securely torqued
to maintenance jack to
avoid injury.**

ASSEMBLE D'TTACH MAINTENANCE JACK

Install (1) Hitch Tube, in the up position onto the (2) Jack Assembly aligning to the "X" (3). Fasten using supplied carriage bolts and flange nuts with a 9/16 wrench.

***Note* Make sure to torque securely and Retorque after first use.**

INSTALL D'TTACH MAINTENANCE JACK

Once Maintenance Jack is assembled, insert Maintenance Jack into existing D'ttach hitch.

Remove (4) Snapper Pin to utilize the "drop leg". Reinsert Snapper Pin to closest available hole to eliminate a few inches of cranking.

Crank clockwise to raise and counter clockwise to lower.

COMPLETELY ASSEMBLED AND INSTALLED MAINTENANCE JACK

Hitch Pin not included with attachments. Hitch Pins sold with Hitches only. Replacement Hitch Pins Available for purchase.



Visit www.dttach.com/support.html

for Product Support, IPL's, Product Literature, Instructions & Tutorial Videos

D'ttach MFG. 83-A Comsewogue Rd, E. Setauket, NY 11733 631-642-7445

Follow Us @dttachmfg



DTMJ NSTRUCTIONS.FS 10.1.19