

Frankland Racing Superlite Quick-Change Internal Parts Breakdown



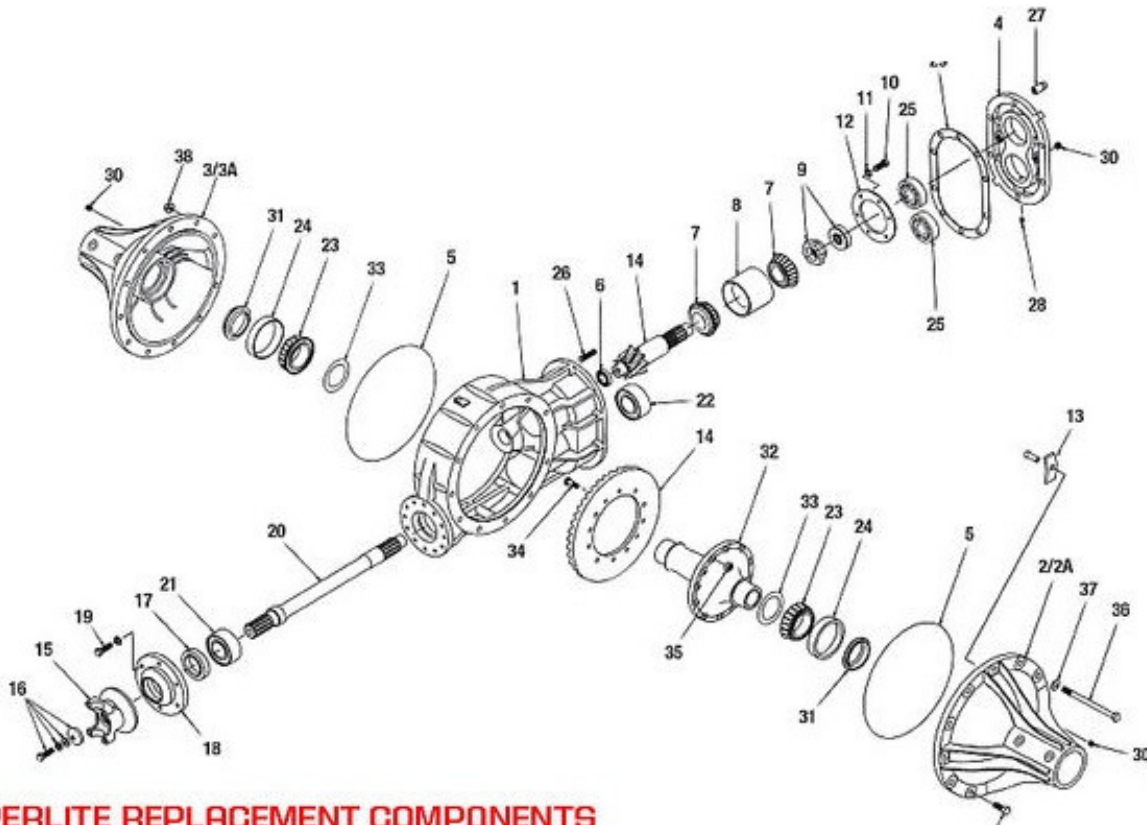
All Frankland Superlite Quick-Change Service Parts
Available At Racecar Engineering



800-882-7231 — sales@racecareng.com



CLOSED TUBE SUPERLITE QUICK CHANGE



SUPERLITE REPLACEMENT COMPONENTS

No.	Description	Part No.
1	Center Section Nose Bearing, Magnesium	-
2	Left Side Bell, 8-Rib	FRKQC0253ML
2A	Left Side Bell, 6-Rib	FRKQC0254M
2A	Left Side Bell, 6-Rib, Coated	FRKQC0254MC
3	Right Side Bell, 8-Rib	FRKQC0253MR
3A	Right Side Bell, 6-Rib	-
3A	Right Side Bell, 6-Rib, Coated	FRKQC0255MC
4	Superlite Rear Cover	FRKKT0840M
5	Seal O-Ring, Superlite And Frankland III	FRKQC0275
6	Pinion Nose Bearing, Narrow	FRKQC0160
7	Pinion Bearing	FRKQC0200
8	Pinion Bearing, Carrier	FRKQC0203
9	Pinion Nut, LH, Spread Bearing Posi Lock	FRKQC0214A
10	Pinion Lock Plate Bolt	-

No.	Description	Part No.
11	3/8" Lock Washer	-
12	Pinion Lock Plate, Steel	FRKQC0060
13	Thrust Block And Pin	FRKQC0310
15	Yoke	FRKQC0380
16	Yoke Bolt & Washer	FRKQC0381
17	Front Yoke Seal	FRKQC0150
18	Front Seal Plate	FRKQC0140
19	3/8"-16 x 1-1/4" Bolt, Aluminum	-
20	Lower Shaft, Pre-Hardened	FRKQC0405PH
21	Sprint Input Shaft Bearing	FRKSP0017
22	Sprint Output Shaft Bearing	FRKSP0018
23	Carrier Bearing	FRKQC0290
23	Carrier Bearing, Used For Set-Up	FRKQC0289*
24	Carrier Bearing Race	FRKQC0280
25	Rear Cover Bearing	FRKQC0090

No.	Description	Part No.
26	Rear Cover Stud	FRKQC0121
27	Rear Cover Nut	FRKQC0122
28	Rear Cover Bearing Lock Screw	FRKQC0117
29	Rear Cover Gasket	FRKQC0815
30	Pipe Plug, 3/8" Aluminum	FRKQC0321A
31	Axle Tube Seal	FRKQC0300
32	Aluminum Spool	FRKQC0432
33	Shim Kit	FRKKT0445
34	Ring Gear Bolt	FRKQC0307
35	Ring Gear Nut	FRKQC0103
36	Through Bolt	-
37	7/16" Flat Washer	-
38	7/16" Nut	-
39	7/16"-14 x 1-1/4" Bolt	-

* Special bearing is honed so it can slide on and off the differential, speeding up the set-up process. Two required.

Order Online On Our Website: WWW.RACECARENG.COM