

**Mouse Anti-CD35/CR1 [E11]: MC0663, MC0663RTU7**

**Intended Use:** For Research Use Only

**Description:** CD35, also named as erythrocyte complement receptor 1 (CR1), is a member of the complement activation (RCA) family and is located in the 'cluster RCA' region of chromosome 1. CD35 mediates cellular binding to particles and immune complexes that have activated complement. CD35 is present on erythrocytes, various leucocytes and renal glomerular podocytes. In addition, plasma contains a soluble form of CR1 (Scr1). CD35 also can be detected on follicular dendritic cells. It is a marker for the diagnosis of follicular dendritic cell sarcoma. This antibody labels dendritic cells in tonsil and spleen and glomerular podocytes in kidney.

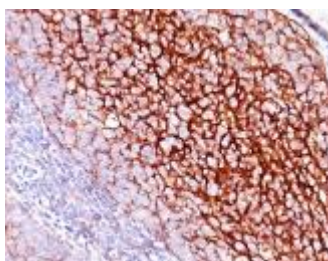
**Specifications:**

Clone: E11  
Source: Mouse  
Isotype: IgG1k  
Reactivity: Human, baboon, cynomolgus monkey, rhesus monkey  
Localization: Membrane  
Formulation: Antibody in PBS pH7.4, containing BSA and  $\leq 0.09\%$  sodium azide (NaN<sub>3</sub>)  
Storage: Store at 2°- 8°C  
Applications: IHC, Flow Cyt., IF  
Package:

Description	Catalog No.	Size
CD35/CR1 Concentrated	MC0663	1 ml
CD35/CR1 Prediluted	MC0663RTU7	7 ml

**IHC Procedure\*:**

Positive Control Tissue: Tonsil, follicular dendritic cell sarcoma  
Concentrated Dilution: 50-200  
Pretreatment: Citrate pH6.0, 15 minutes using Pressure Cooker, or 30-60 minutes using water bath at 95°-99°C  
Incubation Time and Temp: 30-60 minutes @ RT  
Detection: Refer to the detection system manual  
\* Result should be confirmed by an established diagnostic procedure.



FFPE human tonsil stained with anti-CD35 using DAB

**References:**

1. Analysis of the Putative Role of CR1 in Alzheimer's Disease: Genetic Association, Expression and Function. Fonseca MI, et al. PLoS One 11:e0149792, 2016.
2. Using mutagenesis and structural biology to map the binding site for the Plasmodium falciparum merozoite protein Pfrh4 on the human immune adherence receptor. Park HJ, et al. J Biol Chem 289:450-63, 2014.
3. Optimization of total protein and activity assays for the detection of MMP-12 in induced human sputum. LaPan P, et al. BMC Pulm Med 10:40, 2010.

Doc. 100-MC0663  
Rev. A

Orders: [customercare@medaysis.com](mailto:customercare@medaysis.com) Support: [techsupport@medaysis.com](mailto:techsupport@medaysis.com) Tel: 510-509-3154 [www.medaysis.com](http://www.medaysis.com)

© Medaysis Company