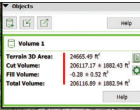


ACCUMAP  
MODELS.com

# CAPABILITY STATEMENT



Total Volume:  
1,883 ft<sup>3</sup>

## CORE COMPETENCIES

AccuMap Models creates 3D point clouds and photogrammetry models, which can be viewed on the cloud or a computer with Pix4D or other point cloud viewer. Within the point cloud you can derive volumetric, linear, and spatial measurements, or the X,Y,Z location of any point, with 1-3 cm of accuracy. Construction progress can be measured and maintained for historic records. Accurate volume for stock pile, debris, or fill can be obtained with just a few clicks. Up-to-date job site models provide a wealth of information for planning and avoiding costly errors. The data for this work is collected by FAA certified drone pilots, which in most cases, do not need to access the job site, therefore eliminating the risk of accidents within the site.

## DIFFERENTIATORS

### Our Photogrammetry Point Clouds:

- Reduce the chances of costly construction errors;
- Provide a cost-efficient method of having up to date, measurable site models;
- Provide contractors and stakeholders with verifiable construction progress.
- FAA Part 107 Certified Drone Pilots
- Insured \$1M (can be increased)
- Thermal aerial photography
- Hispanic Owned Small Business

## COMPANY DATA

### CERTIFICATIONS:

DBE, MBE, LDB

### NAICS Codes:

541370; 541922; 512110

### DUNS:

012737492

## CONTACT INFO

### AccuMap Models

Kelvin Gonzalez

Located in Miami, FL

Serving all of South Florida

305-812-8300

accumapmodels@gmail.com

accumapmodels.com