

PackJet X2

case coding

by Kirk Rudy



2" print solutions

Reduced Costs

lowering the total cost of ownership

With a bulk ink handling system included as an essential part of an integrated head, PackJet X2 units are the most cost effective way of printing on cases and cartons. And with an ink designed specifically for printing on Kraft Corrugate and other carton materials available, total running costs are minimized at all times.

- Lowest total operating cost of any inkjet case coder
- Instant cost per mark and ink usage reporting
- 800mL Bulk systems.
- Print in black or in spot colors



Complete system mounts to a single stand

Designed for Case Coding

proven and dependable performance

The PackJet X2 integrated heads are the essence of what makes Kirk Rudy's industrial printing solutions so successful—rugged design, solid connections to external elements and the finest print heads in the industry, all provided in a commercial off-the-shelf system.

- No mess, no maintenance HP and inc.jet Technology
- Rugged industrial design for the most demanding installations
- Variable and fixed data capability
- SQL Database connectivity
- Simple ASCII interface to supply dynamic data from scanners and PLC's
- Online/Offline job creation

Lifetime Warranty

for your peace of mind

Kirk-Rudy provides a Lifetime Warranty for its managed print products. Should the product fail to be in good working order for the products entire life cycle, Kirk-Rudy will repair or replace this at no charge.



All Inclusive Solutions

for your peace of mind

Kirk Rudy's PackJet X2 Integrated heads are enclosed in an industrialized stainless steel casing for maximum protection. Seamlessly included in this rugged housing is a print controller and a bulk ink system.

The integrated head has connections for encoders, stack lights, and an internal or external sensor as well as an Ethernet port for connecting to the User Interface or even external data sources.

- 2" Print Head
- Accessory Kit (Sensor, encoder and Stack Light)
- 15 User Interface (with Design and Management software)
- Industrial Stand
- Bulk Ink System

Add a further 2" print capability with:

- Additional 2" Print Head
- Additional Bulk Ink System

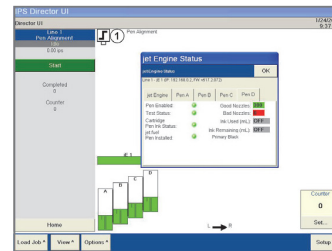


PackJet X2 Integrated Head (front view)

**Specifications subject to change with out notice



15" screen with keyboard



Highly flexible Software



2" Print Head

Print Specifications

Print Resolution		
600 dpi x 300 dpi	250 feet per minute	
300 dpi x 300 dpi	500 feet per minute	
Print Density	User configurable	
Printable Items		
Barcode Capability	Static:	87 Types
	Dynamic:	9 Types
Other Printable Items	Lot Codes	
	Date/Expiry Date	
	Shift Codes	
	Foreign Languages	
	Bitmaps/Logos	
	Fixed Text	
	User Inserts	
	Counter and Batch Numbers	

