

# Vertical Exposed FCU

## Product Info

Category: Vertical Exposed

Products: 5FCVE02, 5FCVE03, 5FCVE04,  
5FCVE06, 5FCVE08, 5FCVE10, 5FCVE12



\* Available in 2-pipe and 4-pipe configurations

## Specifications

	5FCVE02	5FCVE03	5FCVE04	5FCVE06	5FCVE008	5FCVE10	5FCVE12
Air Flow High	180	260	400	580	870	920	1,160
Air Flow Medium	130	200	270	460	710	770	940
Air Flow Low	100	160	220	330	550	600	640
Cooling Capacity High	4,900	7,000	11,900	15,300	23,400	25,400	29,300
Cooling Capacity Med.	4,400	6,400	9,800	13,600	22,000	23,200	26,600
Cooling Capacity Low	3,900	5,700	8,500	11,700	19,500	21,300	21,500

Heating Capacity High	8,300	11,600	19,600	26,700	38,500	41,300	53,1
Heating Capacity Medium	7,100	9,900	15,000	22,800	34,400	36,000	45,5
Heating Capacity Low	6,100	8,200	12,200	17,700	29,800	31,600	35,6
Voltage	115	115	115	115	115	115	115
Sound Level High (NC rating)	33	36	37	44	44	47	49
Sound Level Medium (NC rating)	27	28	29	38	39	42	45
Sound Level Low (NC rating)	22	24	24	30	32	32	34
Width	41"	45"	51"	61"	63"	77"	85"
Height	25"	25"	25"	25"	25"	25"	25"
Depth	9.25"	9.25"	9.25"	9.25"	9.25"	9.25"	9.25"

877-ICE-AIR-1

© 2016 Ice Air. All rights reserved.



*Quiet Comfort – Incredible Value*

## Vertical Exposed

Ice Air's family of Fan Coil Units (FCUs) **provides superior whisper quiet, energy efficient performance.** And, they are guaranteed to lower your installation and operating costs on your next new construction, retrofit or renovation project. They are available in a variety of coil configurations to offer heating, cooling or both to a variety of spaces. Our FCUs can be installed in the ceiling (Horizontal Concealed and Horizontal Concealed–Ultra Thin), exist as freestanding cabinet units (Vertical Exposed), mounted inside walls (Vertical Concealed), or furred into walls (Hi Rise).

**Our versatile FCUs are ideal for high-volume users like:**

- Residential buildings
- Medical facilities
- Hotels/Motels
- Office buildings & more



**Fan Coil Units** are a simple and easy cooling and heating solution that fits – providing reliable performance, high efficiency, ease of operation, low cost, easy installation, quiet comfort and a variety of customized options.

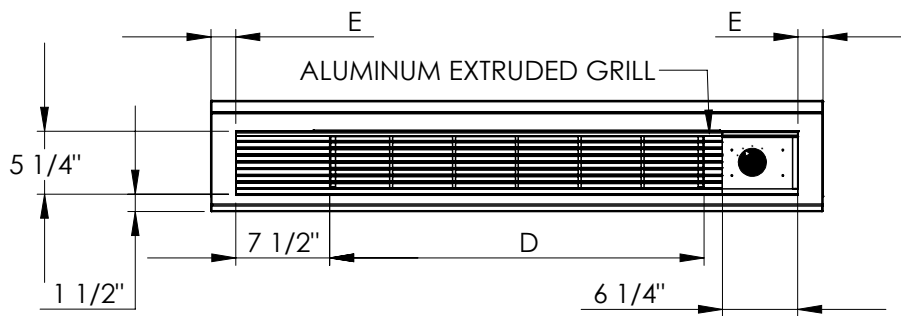
### The Ice Air Fan Coil Unit Variety:

- Vertical Exposed
- Vertical Concealed
- Horizontal Concealed
- Horizontal Concealed – Ultra Thin
- Hi Rise

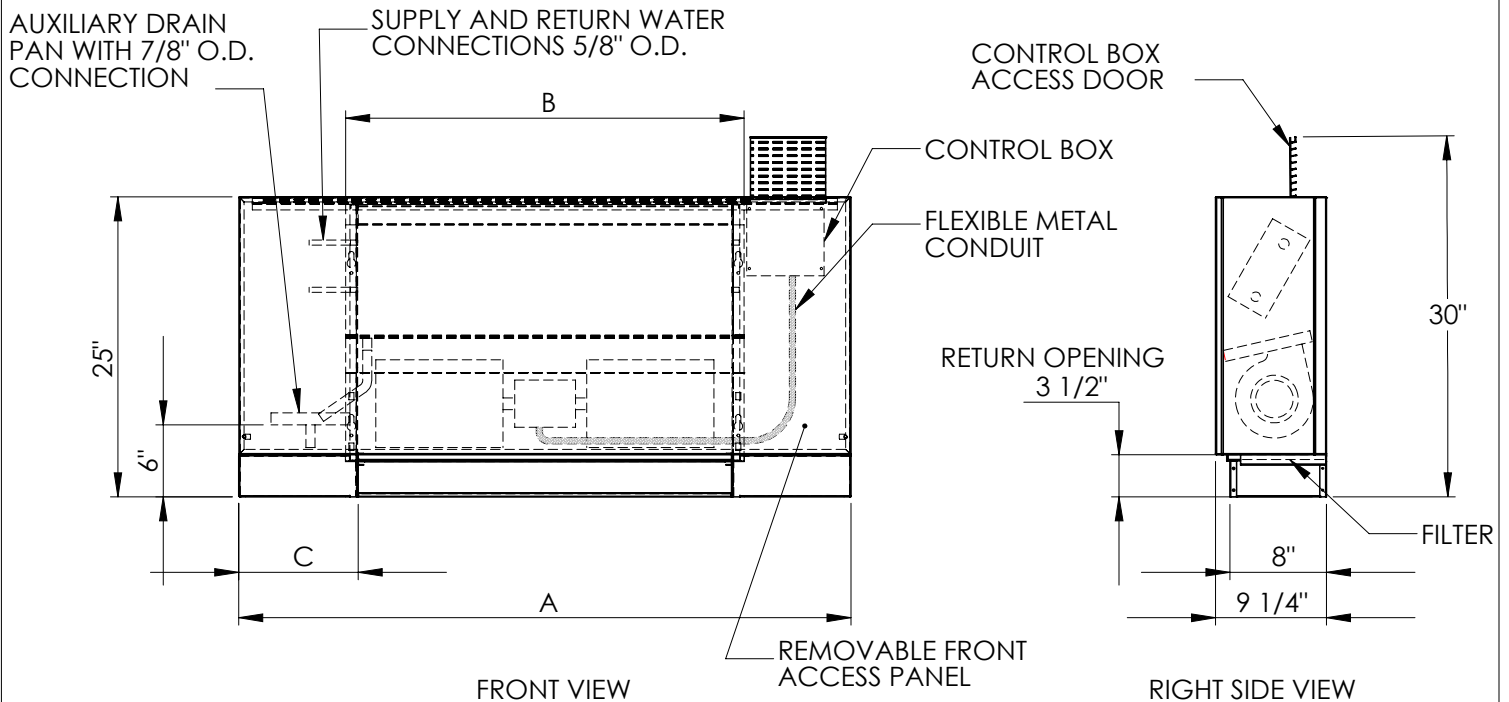
MODEL		5FCVE02	5FCVE03	5FCVE04	5FCVE06	5FCVE08	5FCVE10	5FCVE12
Air Flow (CFM)	High	180	260	400	580	870	920	1160
	Med	130	200	270	460	710	770	940
	Low	100	160	220	330	550	600	640
Cooling Capacity (BTU)	High	4900	7000	11900	15300	23400	25400	29300
	Med	4400	6400	9800	13600	22000	23200	26600
	Low	3900	5700	8500	11700	19500	21300	21500
Heating Capacity (BTU)	High	8300	11600	19600	26700	38500	41300	53100
	Med	7100	9900	15000	22800	34400	36000	45500
	Low	6100	8200	12200	17700	29800	31600	35600
Dimension	Width	41"	45"	51"	61"	63"	77"	85"
	Height	25"	25"	25"	25"	25"	25"	25"
	Depth	9-1/4"	9-1/4"	9-1/4"	9-1/4"	9-1/4"	9-1/4"	9-1/4"
Fan	Type	Double Inlet Forward Curve						
	Number	1	2	2	2	3	4	4

Motor	Voltage/Hz	115V/60Hz
Coil	Type	Aluminum Fin and Copper Tube
Piping Connection	Inlet/Outlet Condensate	1/2" 5/8"
Cooling		80°F DB, 67°F WB, 45°F Entering Water, 10° Temperature differential
Heating		70°F DB, 180°F Entering Water

Contact Ice Air today at **1-877 ICE-AIR-1** or visit **www.ice-air.com** to learn more!



TOP VIEW



FRONT VIEW

RIGHT SIDE VIEW

Ice-Air Fan Coil Unit - Vertical								
Model		FCVE02	FCVE03	FCVE04	FCVE06	FCVE08	FCVE10	FCVE12
Dimension	A	41	45	51	61	63	77	85
	B	25 1/2	25 1/2	33 1/4	37 1/4	48 7/8	48 7/8	60 5/8
	C	8 7/8	10 7/8	10	13	8	15	13 1/4
	D	23 1/2	23 1/2	31 1/4	35 1/4	47	47	58 1/2
	E	1	3	2	5	1/4	7 1/4	5 3/8

NOTES.

1. ALL DIMENSIONS ARE  $\pm 1/4"$
2. RH SHOWN, LH OPPOSITE.
3. DRAWING IS PROVIDED FOR REFERENCE ONLY. PRODUCT SPECIFICATIONS ARE SUBJECT TO CHANGE WITHOUT NOTICE.

MATERIAL:	ICE-AIR LLC. 80 HARTFORD AVENUE MOUNT VERNON, NY 10553					
WEIGHT (LBS):						
FINISH: N/A	TITLE: VERTICAL EXPOSED FAN COIL UNIT					
UNLESS OTHERWISE SPECIFIED: DIMENSIONS ARE IN INCHES TOLERANCES: FRACTIONAL ± 1/32 ANGULAR: MACH ± ° BEND ± 1° TWO PLACE DECIMAL ± .03 THREE PLACE DECIMAL ± .015	MODEL BY: VP		DATE: 01/12/09	DWG. NO.  SAB-8161		
	DRAWING BY:		DATE:			
	SIZE A	SCALE: NONE DO NOT SCALE DRAWING			SHEET 1 OF 1	REV B