

**Mouse Anti-STAT6 [STAT6/2410]: MC0253, MC0253RTU7**

**Intended Use:** For Research Use Only

**Description:** Membrane receptor signaling by various ligands, including interferons and growth hormones such as EGF, induces activation of JAK kinases which then leads to tyrosine phosphorylation of proteins that have been designated Stats (signal transducers and activators of transcription). The first members of this family to be described include Stat1 $\alpha$  p91, Stat1 $\beta$  p84 (a form of p91 that lacks 38 COOH-terminal amino acids) and Stat2 p113. Stat1 and Stat2 are induced by IFN- $\alpha$  and form a heterodimer which is part of the ISGF3 transcription factor complex. Stat3, which becomes activated in response to epidermal growth factor (EGF) and interleukin-6 (IL-6), but not interferon- $\gamma$  (IFN- $\gamma$ ) or Stat4, is an additional member of this family. It has been suggested that the phosphorylated forms of both Stat3 and Stat4 form homodimers as well as heterodimers with the other members of the Stat family, and that differential activation of different Stat proteins in response to different ligands should help to explain specificity in nuclear signaling from the cell surface. Highest expression of Stat4 is seen in testis and myeloid cells. IL-12 has been identified as an activator of Stat4. Other members of the Stat family include Stat5, which has been shown to be activated by prolactin and by IL-3, and Stat6 (also designated IL-4 Stat), which is involved in IL-4-activated signaling pathways.

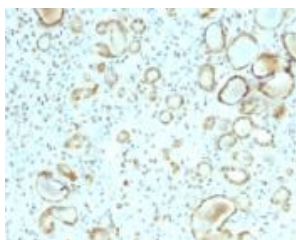
**Specifications**

Clone: STAT6/2410  
Source: Mouse  
Isotype: IgG1k  
Reactivity: Human  
Localization: Cytoplasm, nucleus  
Formulation: Antibody in PBS pH7.4, containing BSA and  $\leq$  0.09% sodium azide (NaN<sub>3</sub>)  
Storage: Store at 2°- 8°C  
Applications: IHC  
Package:

Description	Catalog No.	Size
STAT6 Concentrated	MC0253	1 ml
STAT6 Prediluted	MC0253RTU7	7 ml

**IHC Procedure**

Positive Control Tissue: Tonsil, placenta  
Concentrated Dilution: 50-200  
Pretreatment: Citrate pH6.0, 15 minutes using Pressure Cooker, or 30-60 minutes using water bath at 95°-99°C  
Incubation Time and Temp: 30-60 minutes @ RT  
Detection: Refer to the detection system manual  
\* Result should be confirmed by an established diagnostic procedure.



FFPE human RCC stained with anti-STAT6 using DAB

**References:**

1. Pcd4 Is Involved in the Formation of Stress Granule in Response to Oxidized Low-Density Lipoprotein or High-Fat Diet. Bai Y, et al. PLoS One 11:e0159568, 2016.
2. STAT6 rabbit monoclonal antibody is a robust diagnostic tool for the distinction of solitary fibrous tumour from its mimics. Cheah AL, et al. Pathology 46:389-95, 2014.

Doc. 100-MC0253  
Rev. A