

11 Year Lake Arrowhead Bass Catch 2014-2024

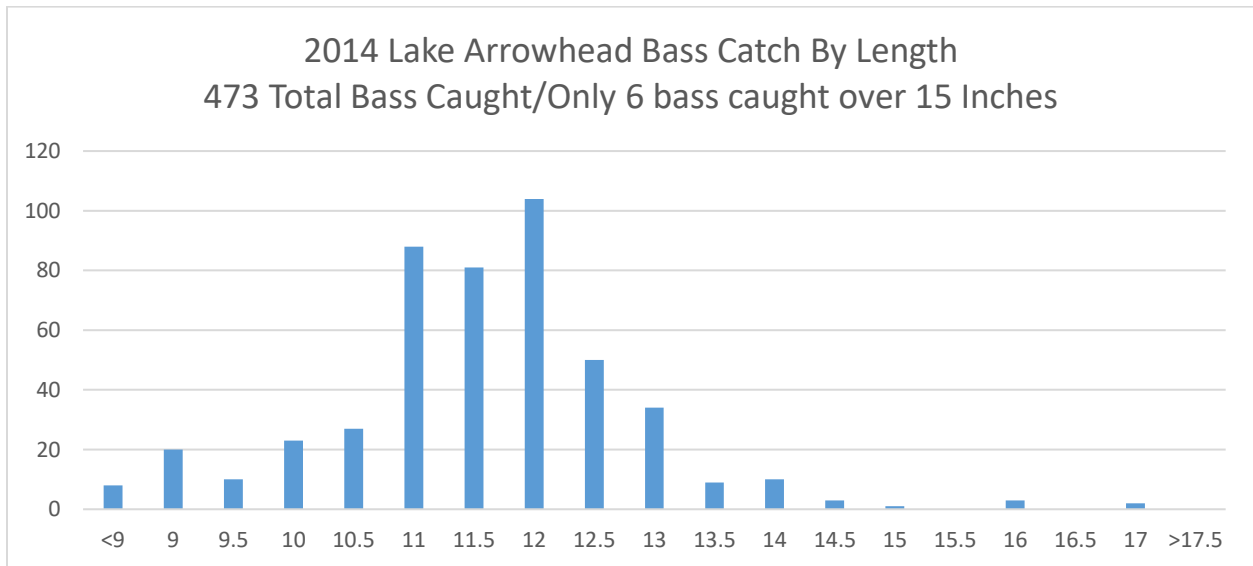
<u>Year</u>	<u>Fishing Days</u>	<u>Total Bass</u>	<u>Bass Caught Per Trip</u>	<u>Bass Harvested</u>
2014	20	600	30	0
2015	16	369	23	30
2016	28	717	25	117 (16.3% of total)
2017	31	691	22	147 (21.3% of total)
2018	20	430	21	85 (20% of total)
2019	18	208	11.5	9 (4% of total)
2020	24	261	11	0
2021	18	472	26	0
2022	21	578	27	101 (17% of total)
2023	13	254	19.5	50 (19% of total)
2024	16	254	16.3	0
11 Year Total	225	4,834	21.48	539 (11.1% of total)

***Days fished/total bass/bass catch/bass harvested # are for Adam Bueltel catch only/not all anglers.**

***Bass Harvest Permit needed to harvest largemouth bass under 15" minimum length limit for Nebraska Private Waters.**

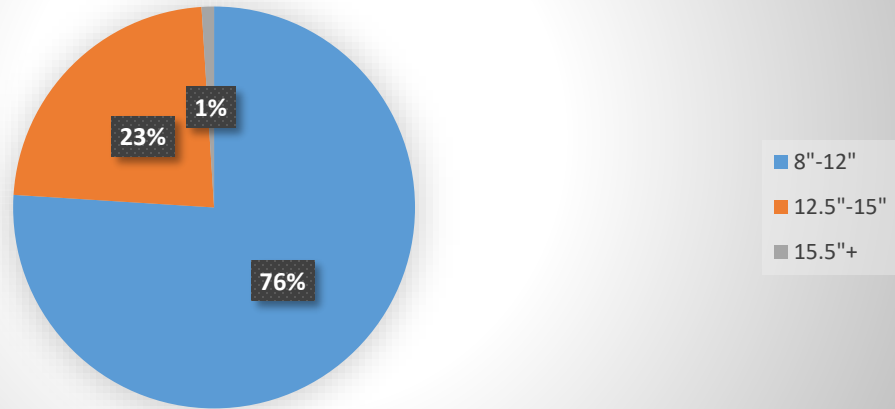
<u>Year</u>	<u>Average Length</u>	<u>Average Weight</u>	<u>Average RW%</u>	<u>% of bass caught over 15+inch</u>
2014	?	?	?	1.2%
2015	12.01 inch	.90 lbs.	?	2.4%
2016	12.37 inch	.97 lbs.	91.3%	6.69%
2017	12.80 inch	1.09 lbs.	91.4%	12.5%
2018	13.23 inch	1.15 lbs.	88%	16%
2019	13.69 inch	1.43 lbs.	101%	20%
2020	13.06 inch	1.28 lbs.	100%	26%
2021	13.00 inch	1.30 lbs.	101%	24.5%
2022	13.16 inch	1.25 lbs.	103%	17%
2023	13.67 inch	1.43 lbs.	105%	17%
2024	13.87 inch	1.53 lbs.	107%	25%

Tiger musky were first stocked in November 2015. Wipers, and walleye were also stocked starting 2013-2014. The second tiger musky stocking was November 2017. Bass harvest was limited/suspended in 2020 to make sure there were more 8-12 inch bass overall (2019-10.8%), currently (end of 2024) we are at 14% of the bass are 8-12 inches, which is below the goal of (40%). Limited harvest of bass can be used again in 2025 to remove skinny, unhealthy bass under 15 inches. 69% of bass caught were between 12.25-15 inches, indicating a strong population which will need to be harvested to allow larger bass more food and reach trophy potential. The third stocking of Tiger Musky (40) was in November 2021. These muskies are now above 30+ inches. Numerous small bass were observed all year, mostly 4-10 inch bass. 25% of the bass caught are now over 15 inches (2024). Numerous 17-20+ inch bass were caught during 2023-2024, these are the bass that will have the best chance at reaching trophy (5+lbs.) potential. Please practice catch and release for these fish. Larger bass help eat smaller bass, limit bass recruitment and eat larger yellow bass. The added artificial habitat placed in the lake in April 2020 helped with young of the year survival for most fish including bass and bluegill which reproduce well in Lake Arrowhead. The electroshocking survey done in June 2020 confirmed most gamefish were in good to excellent condition. There were limited catches of yellow bass and no carp were caught. The next lake survey would be 2026.

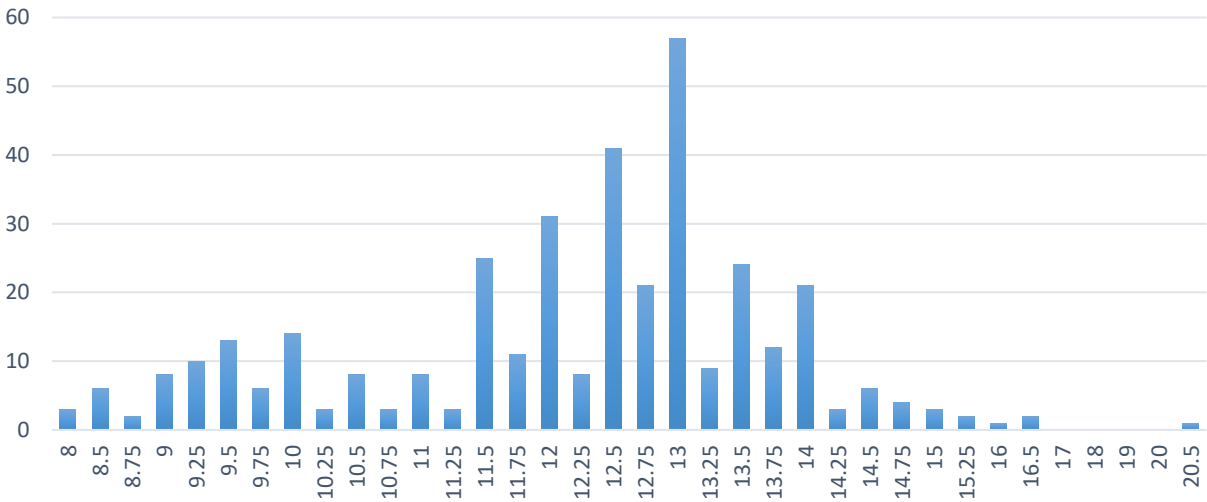


2014 Lake Arrowhead Bass Catch By Length

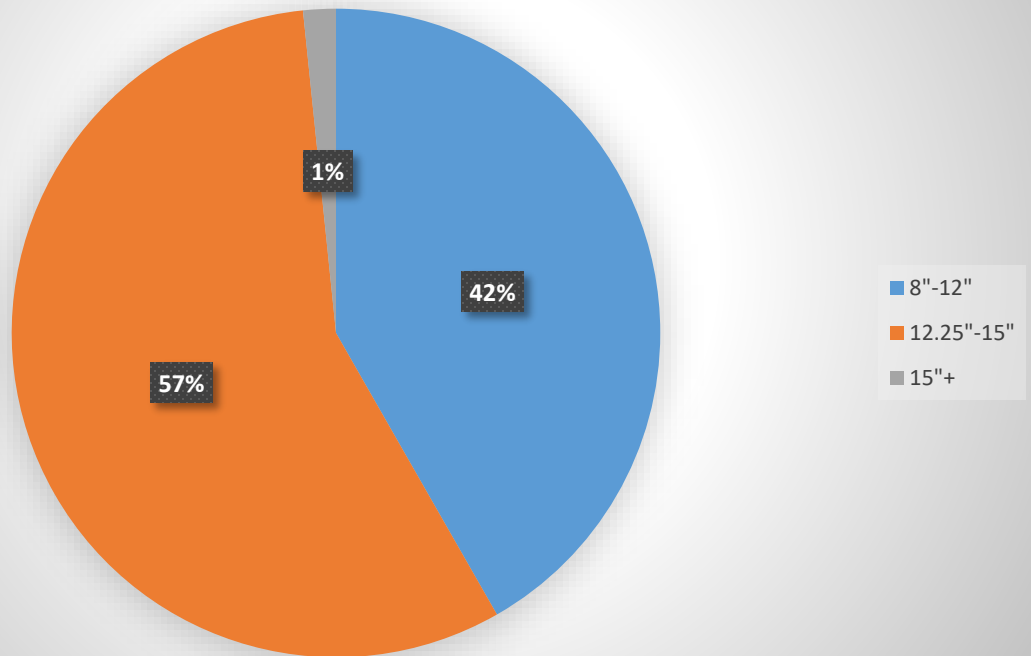
Goal is 8"-12" 40%/12.25"-15" 40%/15.25"+ 20%



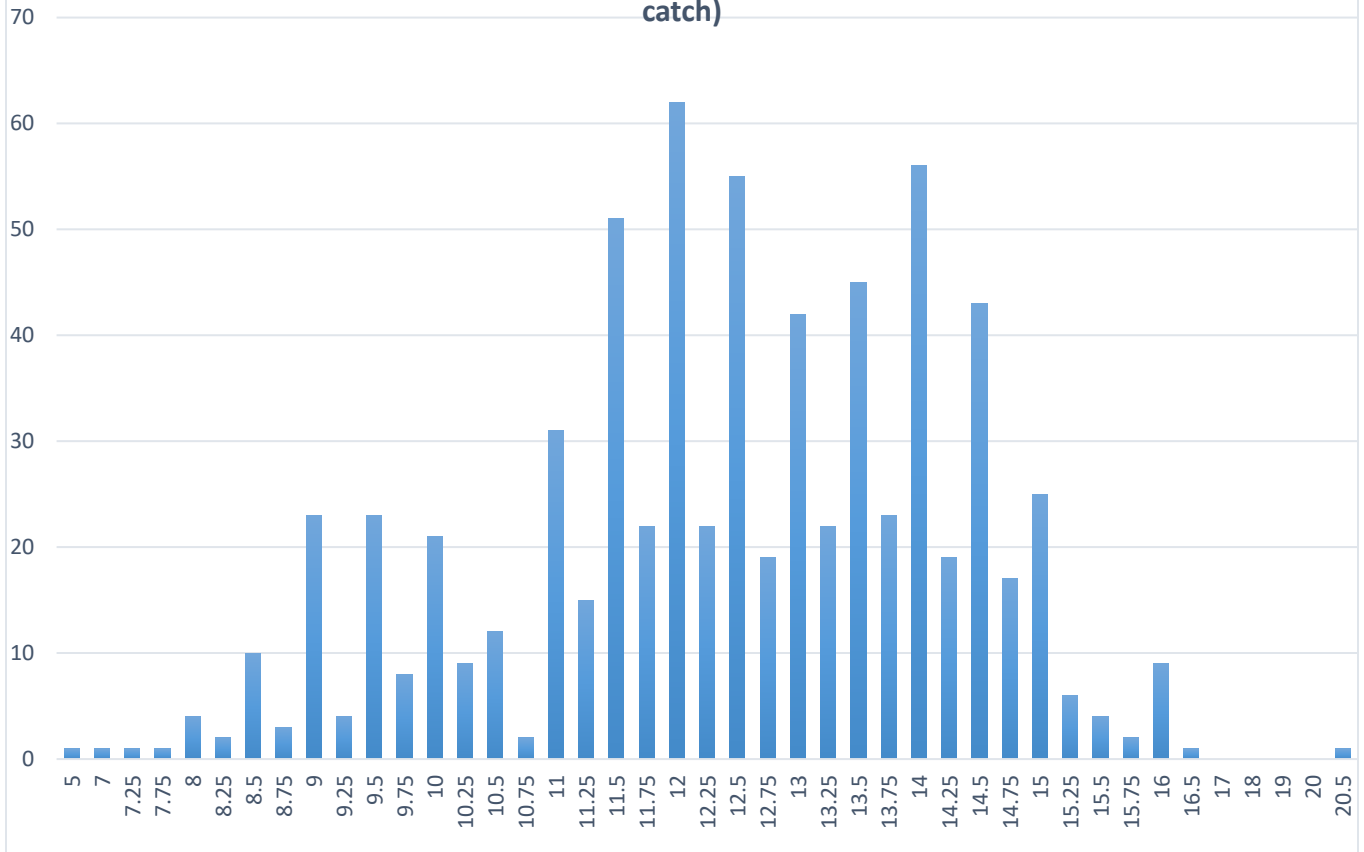
2015 Lake Arrowhead bass catch by length
369 total bass



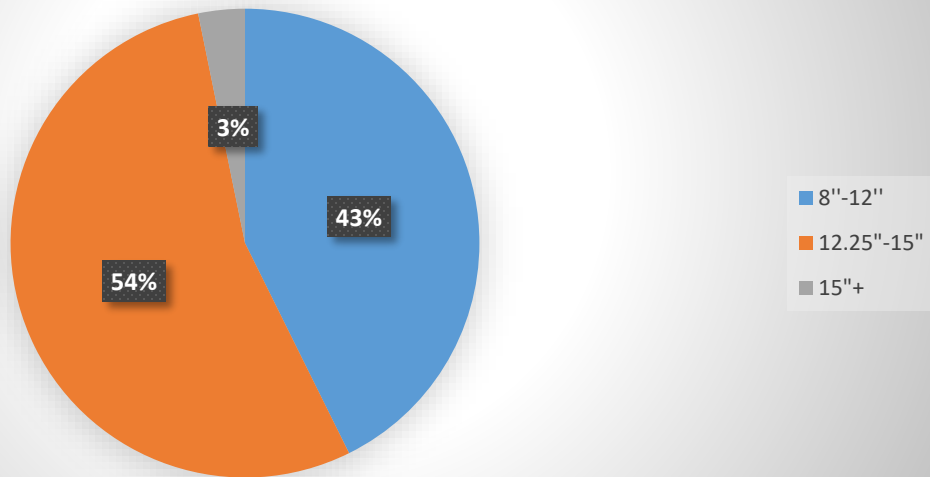
2015 Lake Arrowhead bass catch by length
Goal is 8"-12" 40%/12.25"-15" 40%/15"+20%



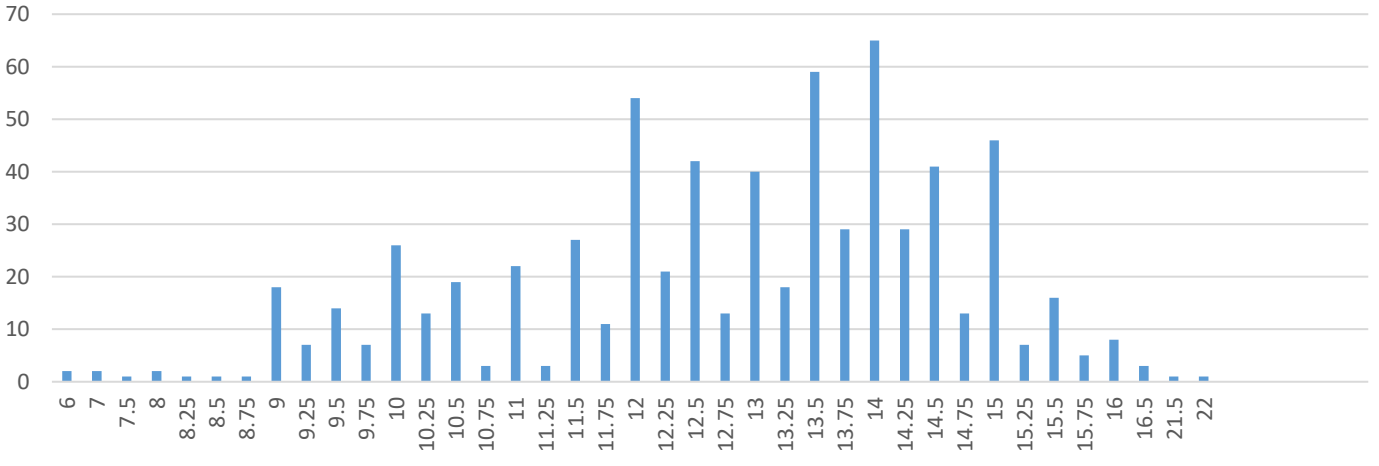
2016 Lake Arrowhead Bass catch by length
717 Total Bass/Relative Weight is 91.3%/Goal is 95-100%
123 of 695 bass weighed were at 100% or better relative weight (17 % of total catch)



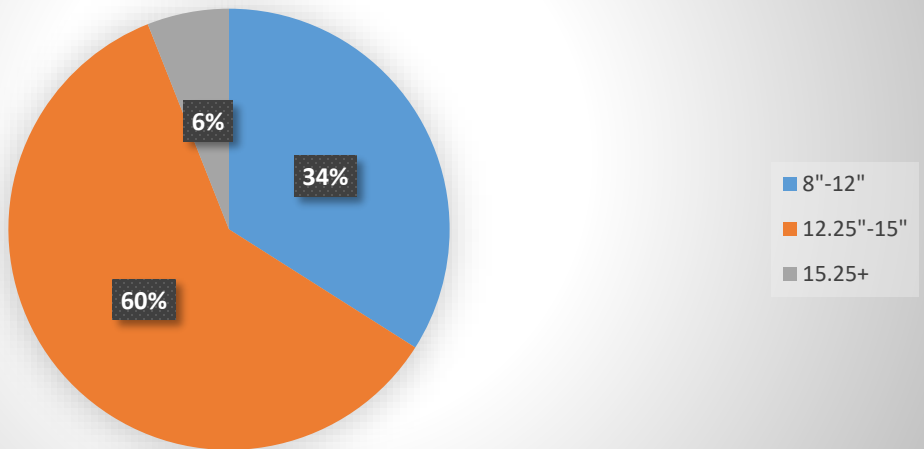
2016 Lake Arrowhead bass catch by length
Goal is 8"-12" 40%/12"-15" 40%/15"+ 20%



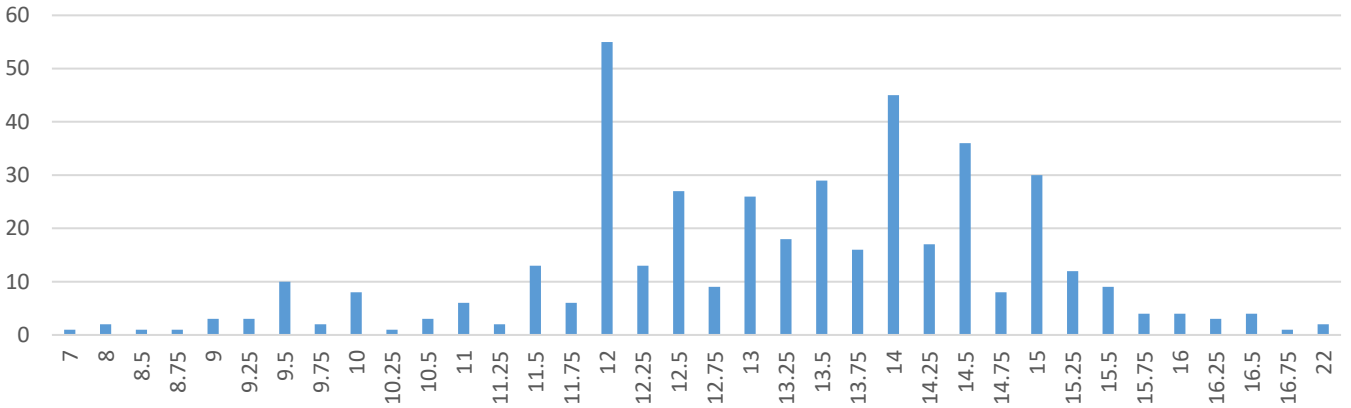
2017 Lake Arrowhead Bass Catch By Length
 691 Total Bass/Relative Weight is 91.4%/Goal is 95-100%
 134 of 691 bass weighed were at 100%+ relative weight (19.3% of total
 bass catch)
 Average bass length was 12.80 inch, Average lbs. was 1.09



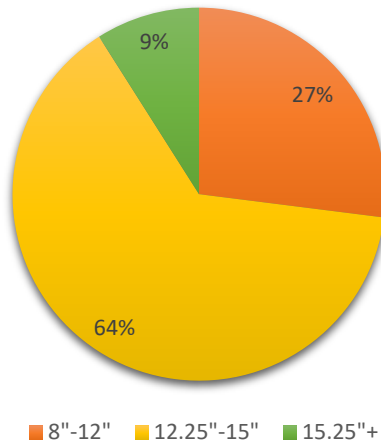
2017 Lake Arrowhead Bass Catch By Length
 Goal is 8"-12" 40%/12.25"-15" 40%/ 15.25+ 20%



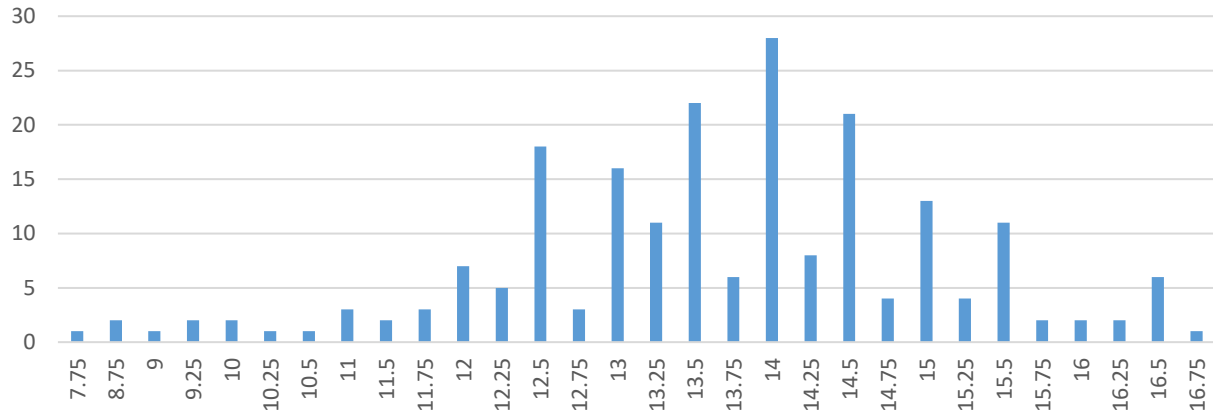
2018 Lake Arrowhead Bass Catch By Length
 430 Total Bass/15+Inch bass (69) 16.02% of total catch
 2017 15+ Inch bass (87) 12.5% of total catch
 2016 15+ Inch bass (48) 6.6% of total catch
 2015 15+ Inch bass (9) 2.4% of total catch
 Largest bass/22 inch (2)



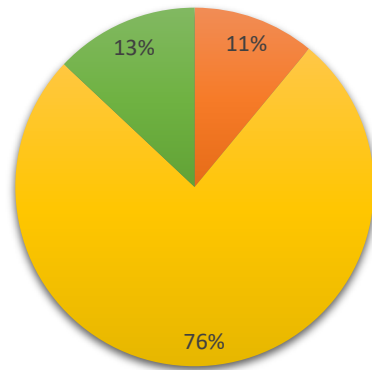
2018 Lake Arrowhead bass catch by length/430 Total Bass
 Goal is 8"-12" 40%/12.25"-15" 40%/15.25+ 20%



2019 Lake Arrowhead Bass Catch By Length
 208 Total Bass Caught/Avg Length-13.62 in, Avg lbs.-1.43 lbs.,
 Avg RW-101%
 20% of bass over 15+ Inches

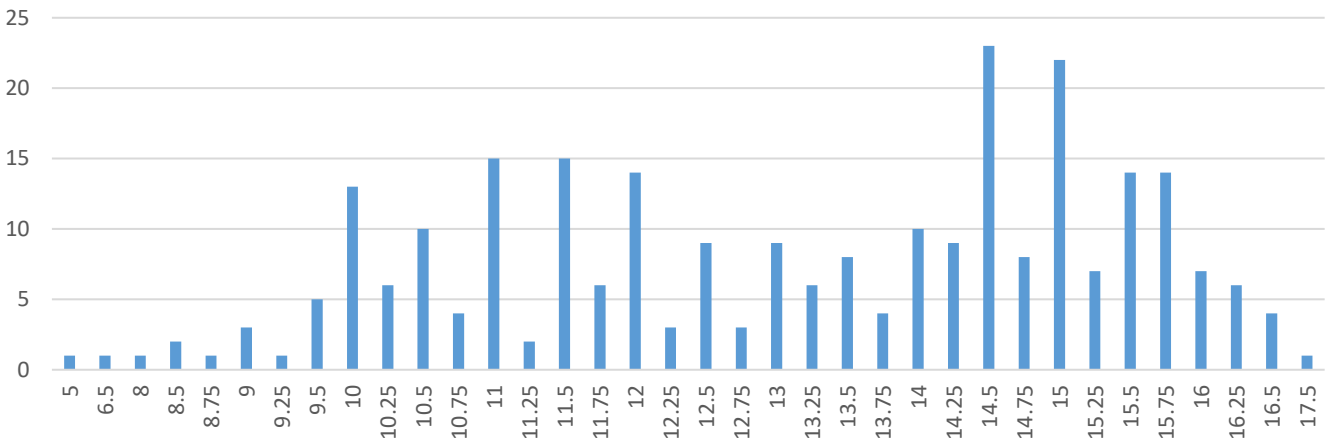


2019 Lake Arrowhead bass catch by length/208 Total Bass
 Goal is 8"-12"=40%/12.25"-15"=40%/15.25"+=20%

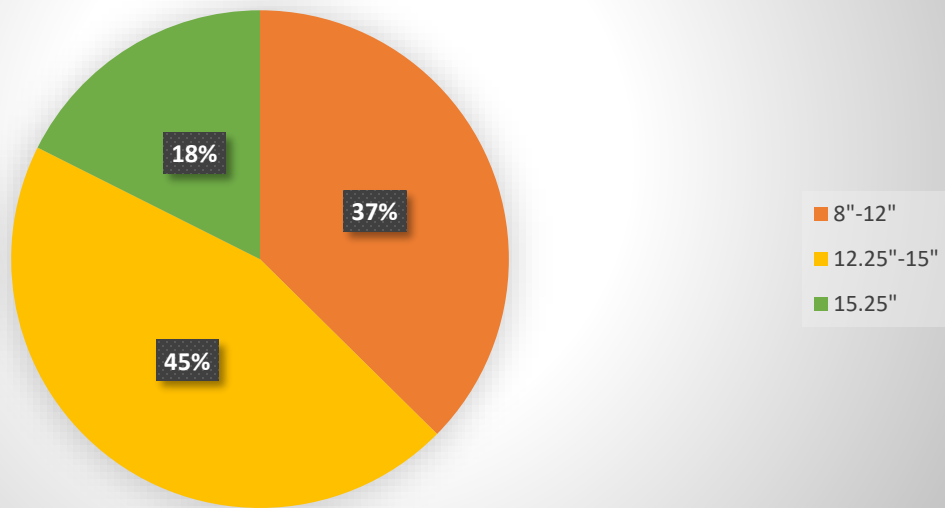


■ 8"-12" ■ 12.25"-15" ■ 15.25"+

2020 Lake Arrowhead Largemouth Bass Catch By Length
 261 Total Bass 13.06 Inch Avg. Length/1.28 lbs Avg. Weight
 100% Avg Relative Weight (RW)
 69 Bass over 15+ inches=26% of total bass catch
 19 Bass over 16+ inches=7% of total bass catch



2020 Lake Arrowhead L. Bass catch by length/261
 Largemouth Bass Goal is 8"-12"=40%, 12.25"-
 15"=40%, 15.25"+=20%

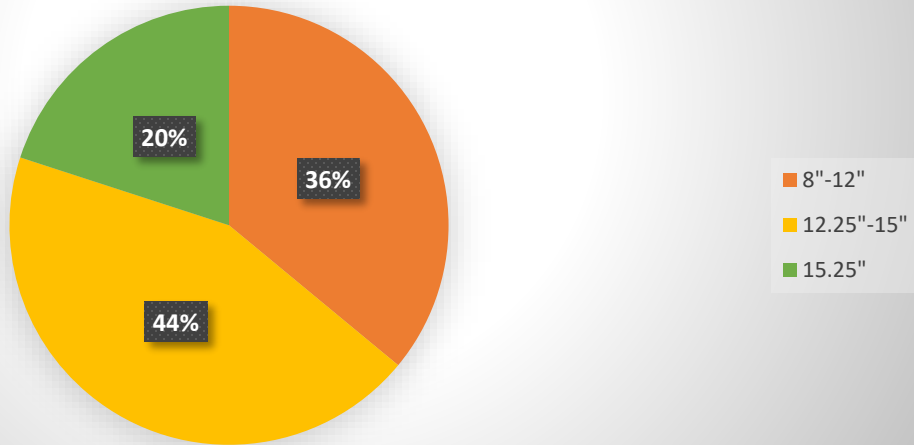


2021 Lake Arrowhead L. Bass catch by length

472 Largemouth Bass

Goal is 8"-12"=40%, 12.25"-15"=40%,

15.25"+=20%

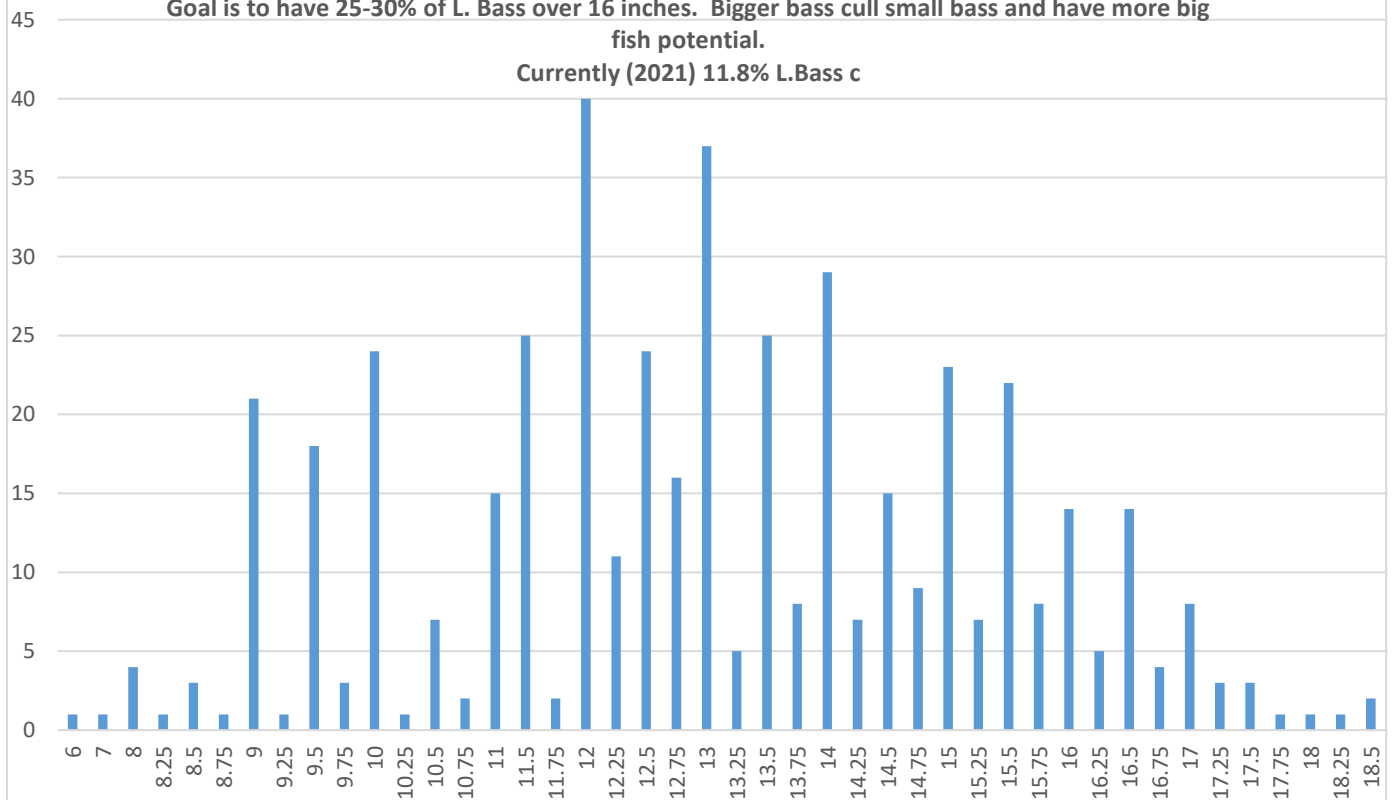


2021 Lake Arrowhead L. Bass catch by length

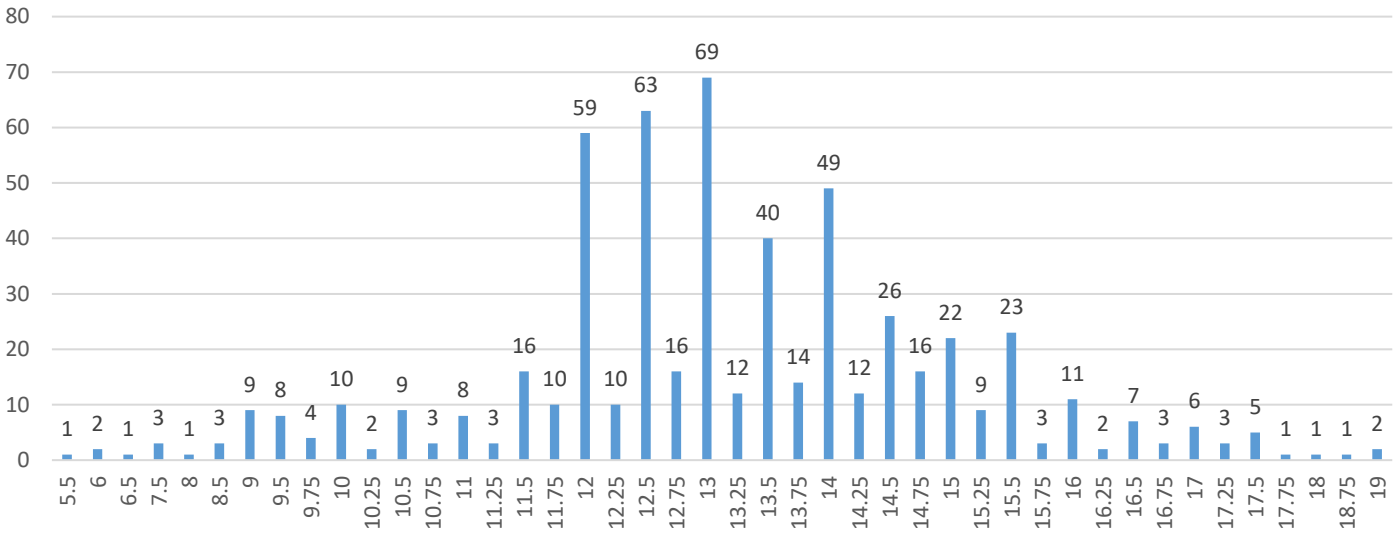
472 bass caught, avg. length 13 in. avg weight 1.30 LBS., Avg RW-101%

Goal is to have 25-30% of L. Bass over 16 inches. Bigger bass cull small bass and have more big fish potential.

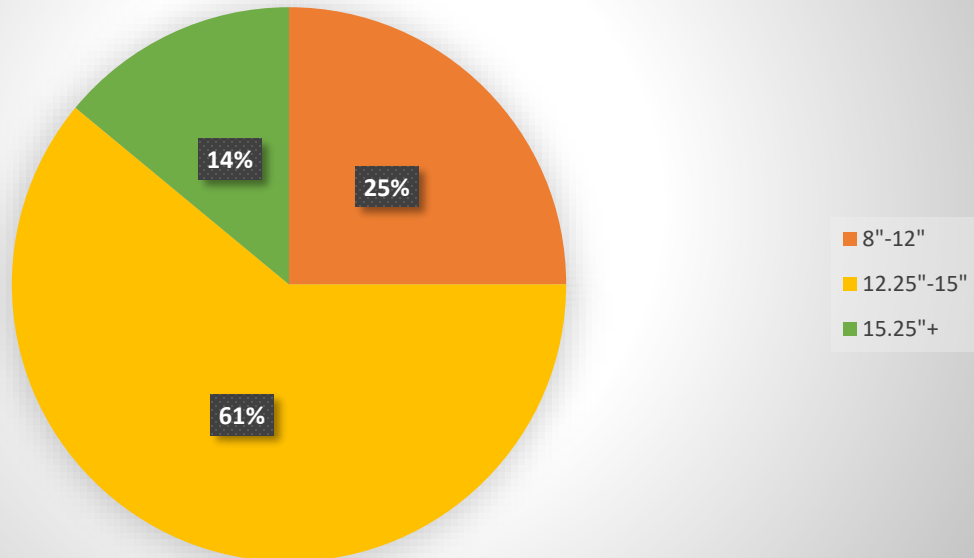
Currently (2021) 11.8% L. Bass c



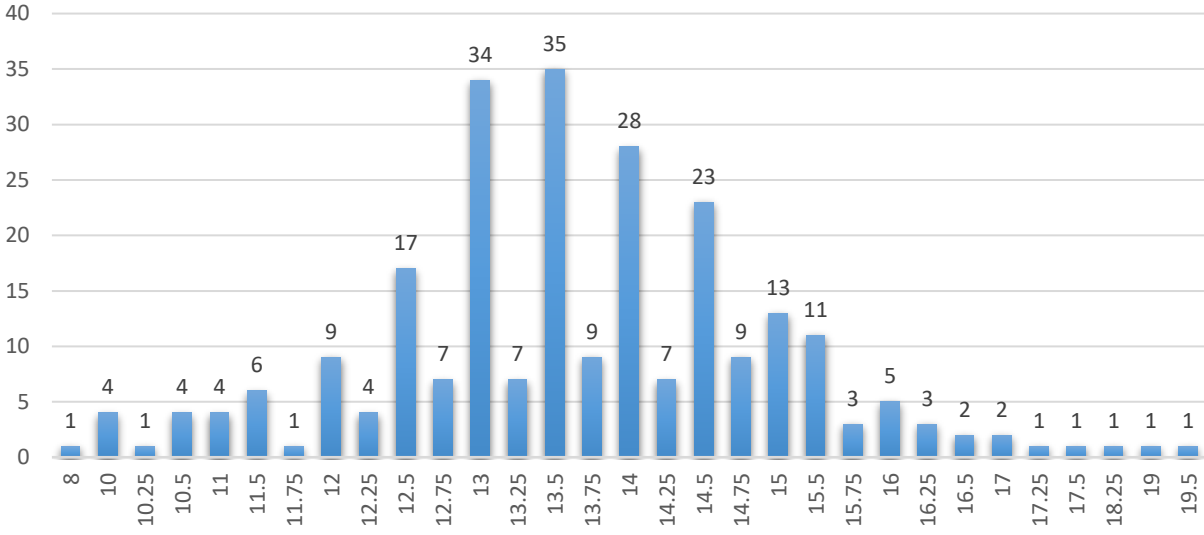
2022 Lake Arrowhead L. Bass catch by length
578 bass caught, avg. length 13.16 in., avg weight 1.25 lbs, Avg RW-103%
Goal is to have 25-30% of L. Bass over 16 in. Currently (2022) 7.3% of L. Bass over 16+ in.



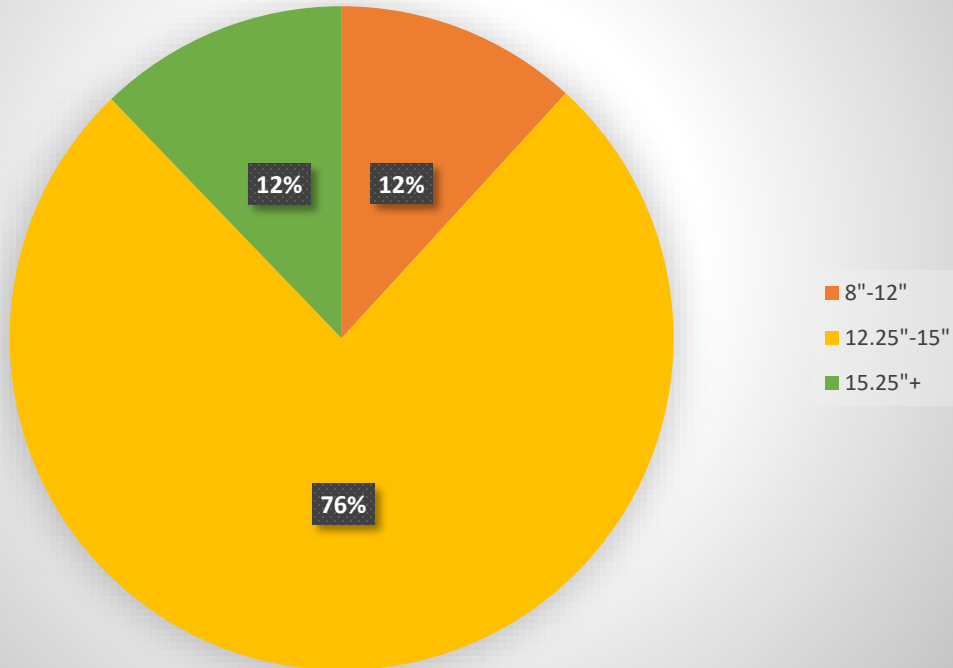
2022 Lake Arrowhead L. Bass catch by length
578 Largemouth Bass
Goal is 8"-12"=40%, 12.25"-15"=40%, 15.25"+=20%



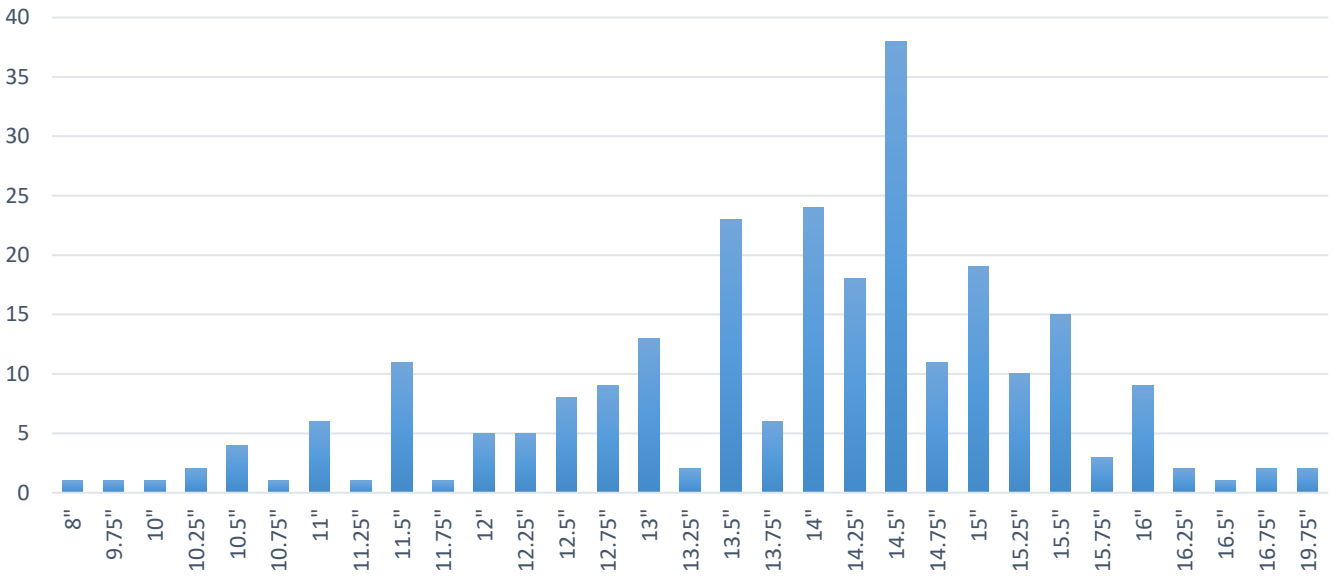
2023 Lake Arrowhead L. Bass catch by length
254 bass caught, avg. length-13.67 in., avg. weight-1.43
lbs. avg. RW%-104



2023 Lake Arrowhead L. Bass catch by length
254 L. Bass
Goal is 8"-12"=40%, 12.25"-15"=40%, 15.25"+=20%



**2024 Lake Arrowhead LM Bass catch by length
(254 bass) Avg. length 13.87 in., Avg. weight 1.53 lbs.**



**2024 Lake Arrowhead LM Bass catch by length
(254 bass total) 25% of bass caught over 15"
Goal is 8"-12"=40%, 12.25"-15"=40% 15.25"+ =20%**

