

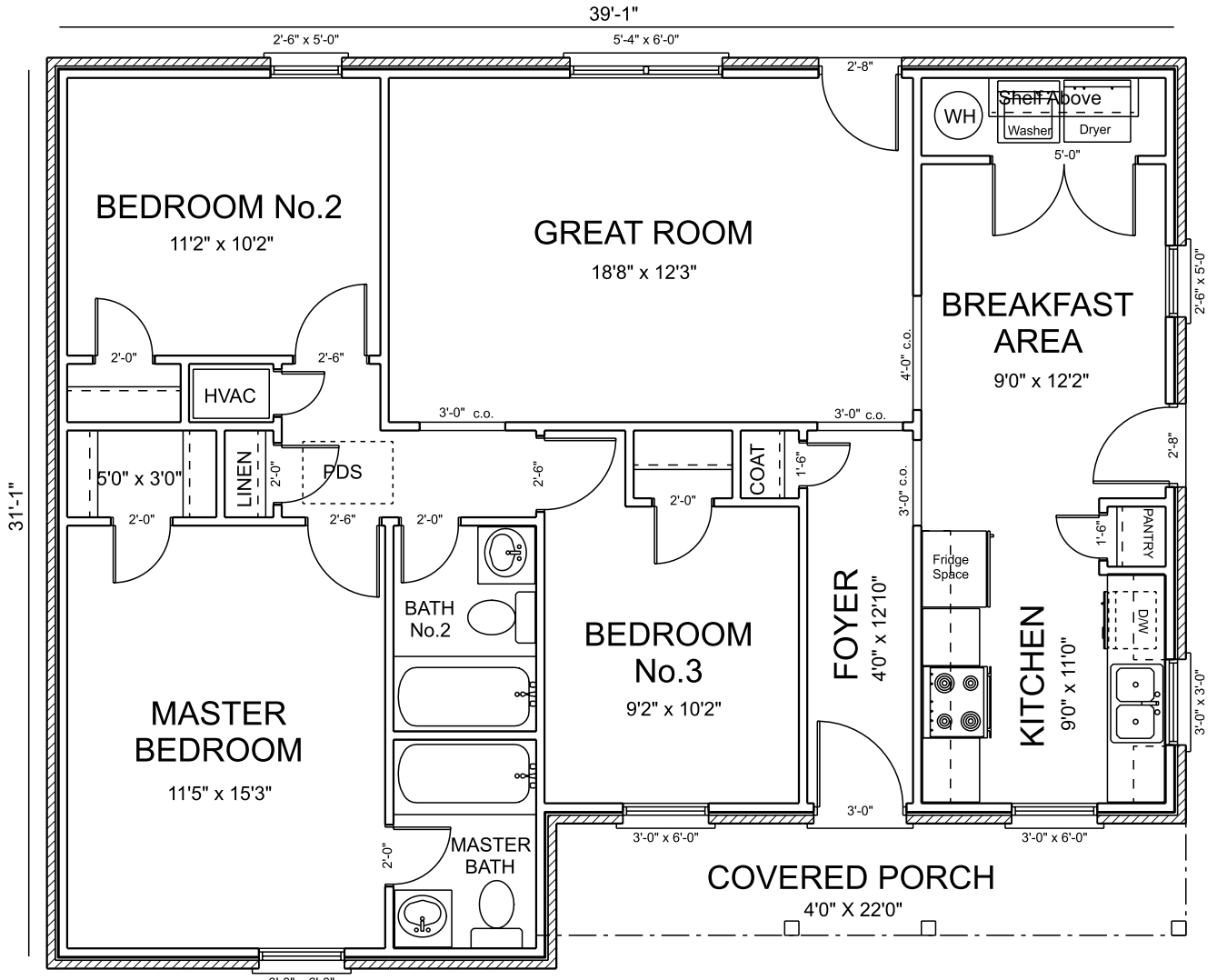
THE VICKSBURG



Alabama Better Built Homes, Inc.
 2203 Howard Murfee Blvd.
 Prattville, AL 36066
 334-285-6380

1162 SQ. FT. LIVING
 85 SQ. FT. PORCH
 1247 SQ. FT. TOTAL

\$
 Subject To Change
 Date: 8/2019
 Initials: C.S



* MEASUREMENTS AS SHOWN ARE NOT INTENDED TO BE EXACT, THEREFORE ARE NOT GUARANTEED AS SHOWN