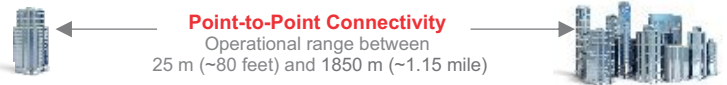




- Affordable, high quality 60 GHz radios made in USA.
- Choice of 3 high performance antennas.
- Advanced “Lens” antenna, superior to previous generation flat panel antennas.
- Up to 2 x Gigabit Ethernet LAN throughput.
- Up to +55 dBm max EIRP, compared to competitors’ 42 dBm, provides higher reliability & longer distance.



Next Generation 60 GHz Point-to-Point Radios

LightPointe’s AireLink wireless bridges set a new benchmark in 60 GHz technology for building-to-building connectivity. Based on over two years of research and development, these backhaul radios are the most affordable, advanced 60 GHz radios available and include a choice of three antennas capable of the highest performance in the industry. And now AireLink radios come with built-in Bluetooth™ street level link monitoring, and can be ordered with full line speed AES 256 encryption.

Whether connecting two buildings in a business or school campus, or providing small cell backhaul in an architecturally sensitive historic district, these radios will provide years of reliable service while avoiding monthly leased line costs. And best of all, 60 GHz is license free in most countries—so your organization can install these radios quickly and without annual regulatory fees.

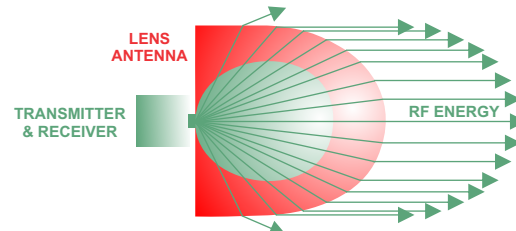


Enterprise & Carrier Applications

- Fiber-like long distance building connectivity for schools, businesses, government buildings and hospitals—without trenching/installing fiber or the recurring costs of leased-line alternatives.
- 4G/LTE macro and small cell mobile backhaul.
- Disaster recovery/emergency communications restoration.
- Digital video and video surveillance connectivity.
- Remote storage access.
- Local Area Network extension.
- Military theater of operations and base connectivity.

Advanced Features

- High speed full-duplex up to 2.5 Gbps with low latency (<40 μs).
 - Flexible connections, PoE, & helpful LED indicators.
 - Data transmission using industry leading 9 levels of Adaptive Coding & Modulation (ACM), automatic or user selectable.
 - High transmission security & interference resistance.
 - Optional Full Line Speed FIPS compliant AES 256 encryption.
 - Fully Integrated street-level Bluetooth™ link monitoring app.
 - Choice of fiber optic or copper interfaces.
 - Unparalleled ease of installation, alignment, & operation.
 - Transmission power control for short distance deployments.
 - Redundant power supplies.
 - Compact & aesthetic design for sensitive installations.
- Innovative small footprint ultra high gain Lens Antenna with the industry’s best in class side lobe suppression & superior performance when compared to flat panel antennas (60 SX).



Gigabit Ethernet

- Secure Bluetooth™ SMART support for remote management via smart phone.
- Optional Full duplex line speed & real time AES encryption.
- Future-proof anytime upgradable features.

AireLink 60 SX

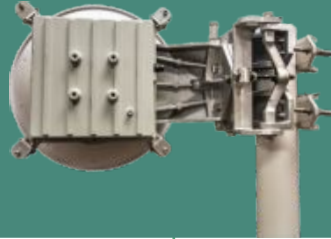
(4.72" / 12cm Lens Antenna)



Up to ~1/2 mile (800 m)

AireLink 60 MX

(1' foot / 30cm Antenna)



Up to ~1 mile (1600 m)

AireLink 60 LX

(2' foot / 60cm Antenna)



Up to ~1.15 mile (1850 m)

Link adaptation	9 level Hitless Automatic Coding & Modulation (ACM) 1 Gbps (16QAM -5/8) 904 Mbps (16QAM -1/2) 722 Mbps (QPSK -13/16) 673 Mbps (QPSK -3/4)	9 level Hitless Automatic Coding & Modulation (ACM) 1 Gbps (16QAM -5/8) 904 Mbps (16QAM -1/2) 722 Mbps (QPSK -13/16) 673 Mbps (QPSK -3/4)	9 level Hitless Automatic Coding & Modulation (ACM) 1 Gbps (16QAM -5/8) 904 Mbps (16QAM -1/2) 722 Mbps (QPSK -13/16) 673 Mbps (QPSK -3/4)
Modulation rates	574 Mbps (QPSK -5/8) 469 Mbps (QPSK -1/2) 323 Mbps (BPSK -3/4) 277 Mbps (BPSK -5/8) 226 Mbps (BPSK -1/2)	574 Mbps (QPSK -5/8) 469 Mbps (QPSK -1/2) 323 Mbps (BPSK -3/4) 277 Mbps (BPSK -5/8) 226 Mbps (BPSK -1/2)	574 Mbps (QPSK -5/8) 469 Mbps (QPSK -1/2) 323 Mbps (BPSK -3/4) 277 Mbps (BPSK -5/8) 226 Mbps (BPSK -1/2)
System latency	< 40 μs + (distance in meters/300)	< 40 μs + (distance in meters/300)	< 40 μs + (distance in meters/300)
Max frame size	Jumbo frames up to 10K	Jumbo frames up to 10K	Jumbo frames up to 10K
Bit error rate	<10 ⁻¹⁰	<10 ⁻¹⁰	<10 ⁻¹⁰
Status indicators	Networking Port Status/Activity, RF ON, RF sync, Align mode, Power	Networking Port Status/Activity, RF ON, RF sync, Align mode, Power	Networking Port Status/Activity, RF ON, RF sync, Align mode, Power
Data network interfaces	RJ-45 (100/1000 Base TX) MM/SM Fiber SFP (1000Base-SX/LX)	RJ-45 (100/1000 Base TX) MM/SM Fiber SFP (1000Base-SX/LX)	RJ-45 (100/1000 Base TX) MM/SM Fiber SFP (1000Base-SX/LX)
Management interfaces	RJ-45 (10/100 Base TX) , RS232 Console port (micro USB)	RJ-45 (10/100 Base TX) , RS232 Console port (micro USB)	RJ-45 (10/100 Base TX) , RS232 Console port (micro USB)
RSSI alignment port	External IP67 connector	External IP67 connector	External IP67 connector
Management	Web based, Telnet Command Interface/CLI, SNMP v1/2c, RS232 micro USB, Loopback op, On board Data Collect/TFTP upload	Web based, Telnet Command Interface/CLI, SNMP v1/2c, RS232 micro USB, Loopback op, On board Data Collect/TFTP	Web based, Telnet Command Interface/CLI, SNMP v1/2c, RS232 micro USB, Loopback op, On board Data Collect/TFTP
Antenna type	Lens (integrated)	Cassegrain (external)	Cassegrain (external)
Channels (GHz)	L: 59.0,59.5,60. H: 62.0, 62.5,63.0	L: 59.0,59.5,60. H: 62.0, 62.5,63.0	L: 59.0,59.5,60. H: 62.0, 62.5,63.0
Transmission power	+8 dBm (max.)	+8 dBm (max.)	+8 dBm (max.)
Max EIRP	44dBm	50dBm	55dBm
Antenna size	12cm	30cm	60cm
Antenna gain	36 dBi	42 dBi	47 dBi
Polarization	Horizontal/Vertical	Horizontal/Vertical	Horizontal/Vertical
Beam width	2.5°	1.1°	0.6°
Power options & protection	PoE+ (IEEE 802.3at) or Direct 48 (36...57) Vdc; Reverse polarization protection; Optional back-to-back power redundancy	PoE+ (IEEE 802.3at) or Direct 48 (36...57) Vdc; Reverse polarization protection; Optional back-to-back power redundancy	PoE+ (IEEE 802.3at) or Direct 48 (36...57) Vdc; Reverse polarization protection; Optional back-to-back power redundancy
Power consumption	25 Watts max	25 Watts max	25 Watts max
Operating temperature	-35°C to +60°C (-31 F to +140 F)	-35°C to +60°C (-31 F to +140 F)	-35°C to +60°C (-31 F to +140 F)
Water & dust rating	IP66	IP66	IP66
Humidity	95%, non condensing	95%, non condensing	95%, non condensing
Size	(220x220x70)mm (enclosure w/o ant & mount bracket)	(220x220x70)mm (enclosure w/o ant & mount bracket)	(220x220x70)mm (enclosure w/o ant & mount bracket)
Weight	4kg (Total. Incl. mount)	6.35kg (Total. Incl. mount)	9.07kg (Total. Incl. mount)

2 x
Gigabit
Ethernet

**60 GHz
TANDEM MODELS**

**TWO RADIOS USING
ONE ANTENNA, FOR THE
ULTIMATE IN PERFORMANCE
(requires OMT coupler/mount)**



Up to ~.06 mile (1000 m)

Up to ~.75 mile (1200 m)

Link adaptation	9 level Hitless Automatic Coding & Modulation (ACM)	9 level Hitless Automatic Coding & Modulation (ACM)
Modulation rates	1 Gbps (16QAM -5/8) 904 Mbps (16QAM -1/2) 722 Mbps (QPSK -13/16) 673 Mbps (QPSK -3/4) 574 Mbps (QPSK -5/8) 469 Mbps (QPSK -1/2) 323 Mbps (BPSK -3/4) 277 Mbps (BPSK -5/8) 226 Mbps (BPSK -1/2)	1 Gbps (16QAM -5/8) 904 Mbps (16QAM -1/2) 722 Mbps (QPSK -13/16) 673 Mbps (QPSK -3/4) 574 Mbps (QPSK -5/8) 469 Mbps (QPSK -1/2) 323 Mbps (BPSK -3/4) 277 Mbps (BPSK -5/8) 226 Mbps (BPSK -1/2)
System latency	< 40 μ s + (distance in meters/300)	< 40 μ s + (distance in meters/300)
Max frame size	Jumbo frames up to 10K	Jumbo frames up to 10K
Bit error rate	<10 ⁻¹⁰	<10 ⁻¹⁰
Status indicators	Networking Port Status/Activity, RF ON, RF sync, Align mode, Power	Networking Port Status/Activity, RF ON, RF sync, Align mode, Power
Data network interfaces	RJ-45 (100/1000 Base TX) MM/SM Fiber SFP (1000Base-SX/LX)	RJ-45 (100/1000 Base TX) MM/SM Fiber SFP (1000Base-SX/LX)
Management interfaces	RJ-45 (10/100 Base TX) , RS232 Console port (micro USB)	RJ-45 (10/100 Base TX) , RS232 Console port (micro USB)
RSSI alignment port	External IP67 connector	External IP67 connector
Management	Web based, Telnet Command Interface/CLI, SNMP v1/2c, RS232 micro USB, Loopback op, On board Data Collect/TFTP	Web based, Telnet Command Interface/CLI, SNMP v1/2c, RS232 micro USB, Loopback op, On board Data Collect/TFTP
Antenna type	Cassegrain (external)L:	Cassegrain (external)L:
Channels (GHz)	59.0,59.5,60. H: 62.0, 62.5,63.0	59.0,59.5,60. H: 62.0, 62.5,63.0
Transmission power	+8 dBm (max.)	+8 dBm (max.)
Configuration	2+0 or 1+1	2+0 or 1+1
Antenna size	30cm	60cm
Antenna gain	42 dBi	47 dBi
Polarization	Horizontal/Vertical	Horizontal/Vertical
Beam width	1.1°	0.6°
Power options & protection	PoE+ (IEEE 802.3at) or Direct 48 (36...57) Vdc; Reverse polarization protection; Optional back-to-back power redundancy	PoE+ (IEEE 802.3at) or Direct 48 (36...57) Vdc; Reverse polarization protection; Optional back-to-back power redundancy
Power consumption	2 x 25 Watts max	2 x 25 Watts max
Operating temperature	-35°C to +60°C (-31 F to +140 F)	-35°C to +60°C (-31 F to +140 F)
Water & dust rating	IP66	IP66
Humidity	95%, non condensing	95%, non condensing
Size	(220x220x70)mm (enclosure w/o ant & mount bracket)	(220x220x70)mm (enclosure w/o ant & mount bracket)
Weight	TBD (Total. Incl. mount)	TBD (Total. Incl. mount)