

925.1 -- SNOWMOBILE MAP

TRAILS, ROUTES, AND CORRIDORS
IN IRON COUNTY

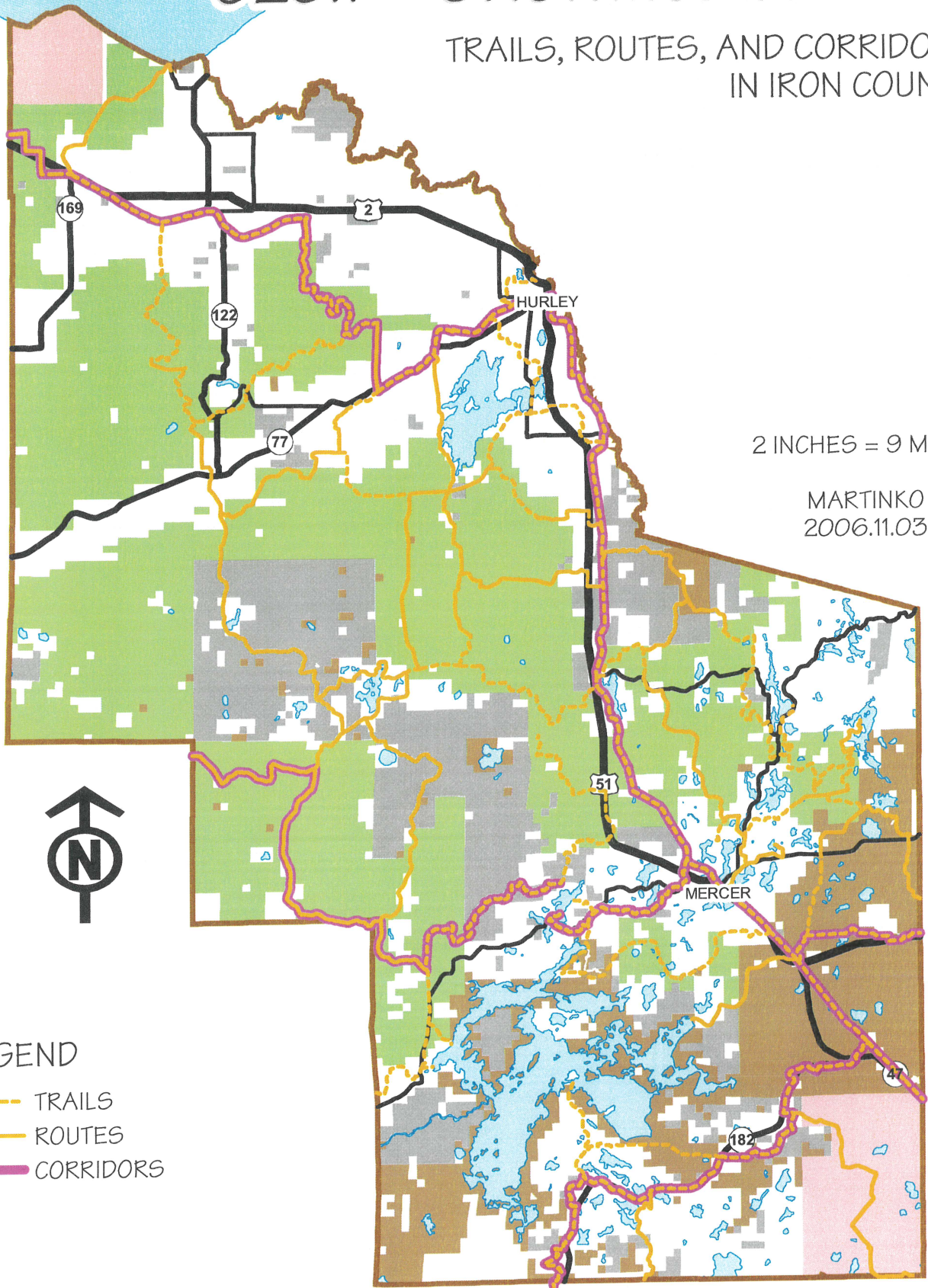
2 INCHES = 9 MILES

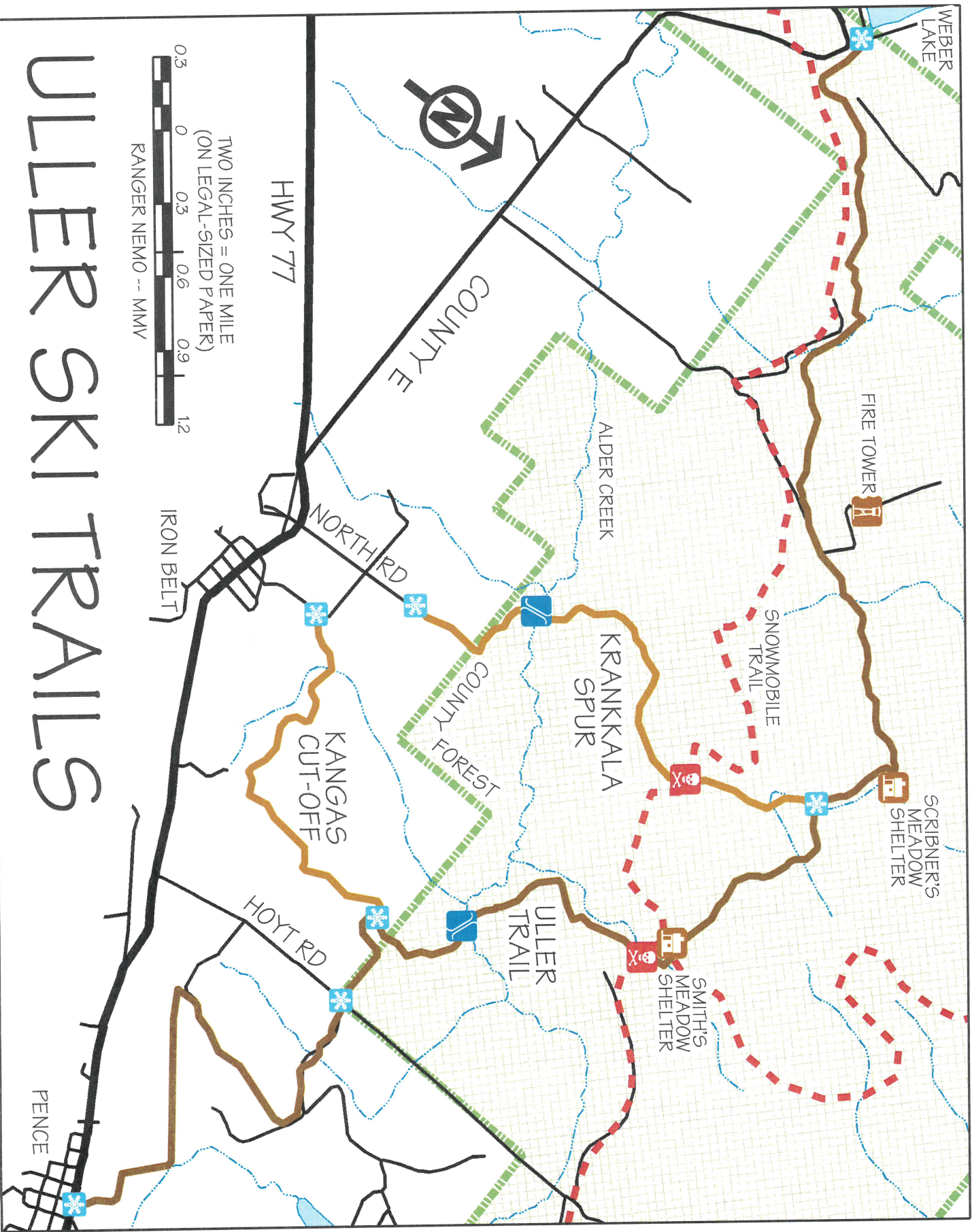
MARTINKO
2006.11.03



LEGEND

- TRAILS
- ROUTES
- CORRIDORS





ULLER BACK-COUNTRY SKI TRAILS

MAINTAINED AND GROOMED BY:
PENOEKEE RANGERS INC.
301 BIRCH ST
PENCE, WI 54550

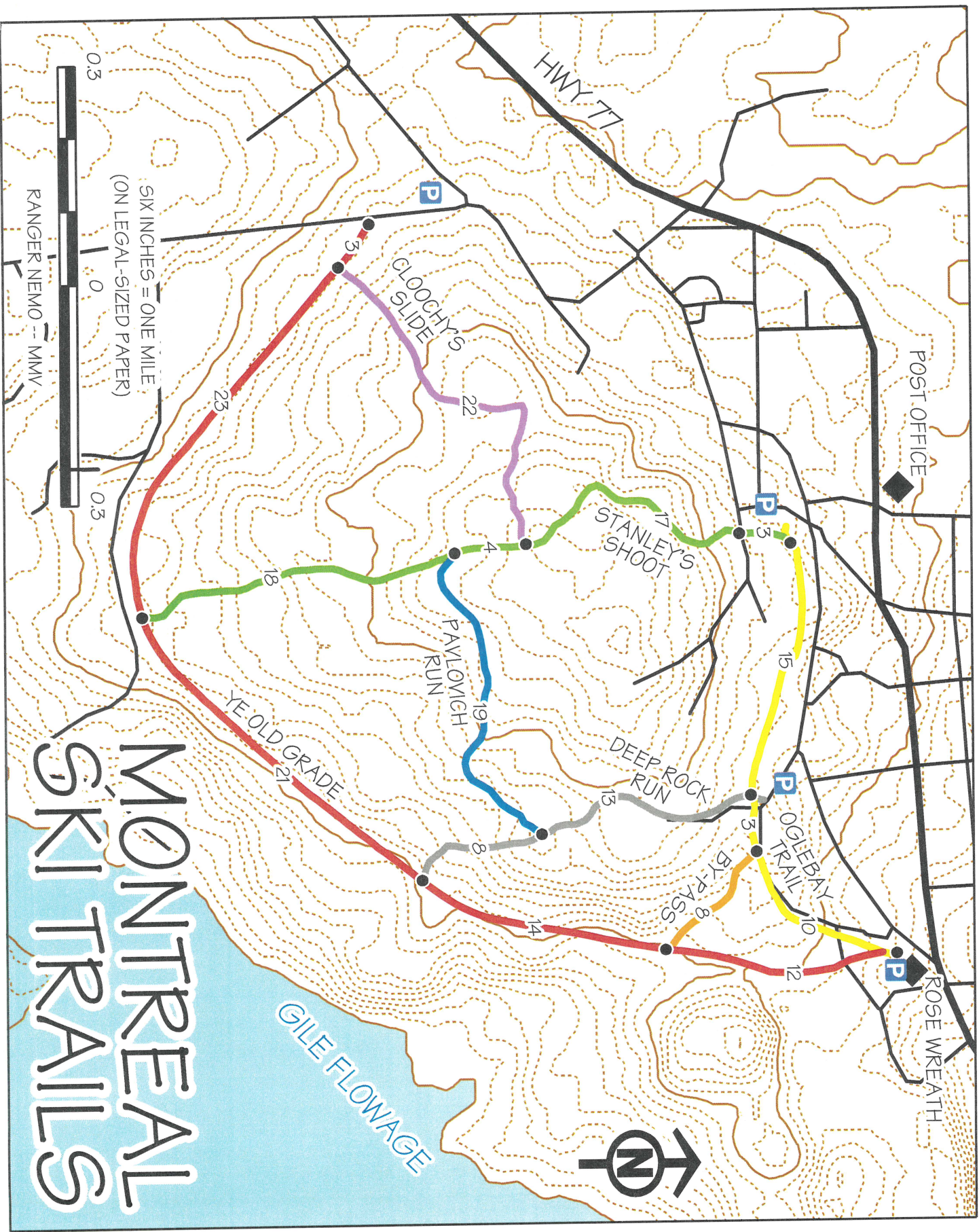
ALL WORK IS DONE BY VOLUNTEERS.
PLEASE DONATE AT A TRAIL-HEAD,
OR TO THE ADDRESS ABOVE.

PLEASE BE CAREFUL...

THESE ARE THE REMOTEST TRAILS
IN WISCONSIN. TRAIL AND WEATHER
CONDITIONS CAN CHANGE QUICKLY.
ALWAYS SKI WITH A BUDDY.

DISTANCES -- MILES:

- ◆ ULLER TRAIL -- 11.0
- ◆ WEBER LAKE TO SCRIBNER'S -- 4.0
- ◆ SCRIBNER'S TO KRANKKALA -- 0.5
- ◆ KRANKKALA TO SMITH'S -- 1.2
- ◆ SMITH'S TO KANGAS -- 1.9
- ◆ KANGAS TO HOYT -- 0.5
- ◆ HOYT TO PENCE -- 2.9
- ◆ KRANKKALA SPUR -- 2.8
- ◆ KANGAS CUT-OFF -- 2.1



MONTREAL SKI TRAILS

MAINTAINED AND GROOMED BY:
PENOKEE RANGERS INC.
301 BIRCH ST
PENCE, WI 54550

ALL WORK IS DONE BY VOLUNTEERS.
PLEASE DONATE AT A TRAIL-HEAD,
OR TO THE ADDRESS ABOVE.

PLEASE BE CAREFUL...

THESE ARE REMOTE TRAILS.
TRAIL AND WEATHER CONDITIONS
CAN CHANGE QUICKLY.
ALWAYS SKI WITH A BUDDY.

TRAILS:	MI	KM
YE OLDE GRADE	1.8	2.9
BY-PASS	0.2	0.3
OGLEBAY TRAIL	0.7	1.2
DEEP ROCK RUN	0.5	0.9
CLOOCHY'S SLIDE	0.6	0.9
STANLEY'S SHOOT	1.0	1.6
PAVLOVICH RUN	0.5	0.8

DISTANCES:

TO CALCULATE DISTANCE SKIED...
ADD NUMBERS ALONG ROUTE.
DIVIDE TOTAL BY 40 FOR MILES.
DIVIDE TOTAL BY 25 FOR KM.

TO CALCULATE DISTANCE...
ADD NUMBERS ALONG ROUTE SKIED.
DIVIDE TOTAL BY 40 FOR MILES.
DIVIDE TOTAL BY 25 FOR KILOMETERS.

BEACHWAY RD

LITTLE PIKE LAKE RD

JOE'S SHACK RD

IRON
COUNTY
FOREST

WISCONSIN
LITTLE TURTLE FLOWAGE
WILDLIFE AREA

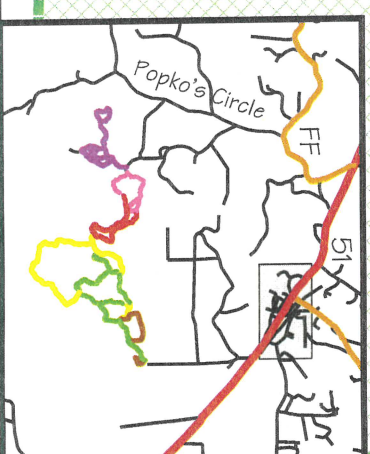
IRON
COUNTY
FOREST



FOUR INCHES = ONE MILE
(ON LEGAL-SIZED PAPER)

RANGER NEMO -- MMV

MECCA TRAILS



MECCA

SKI / HIKE / BIKE TRAILS

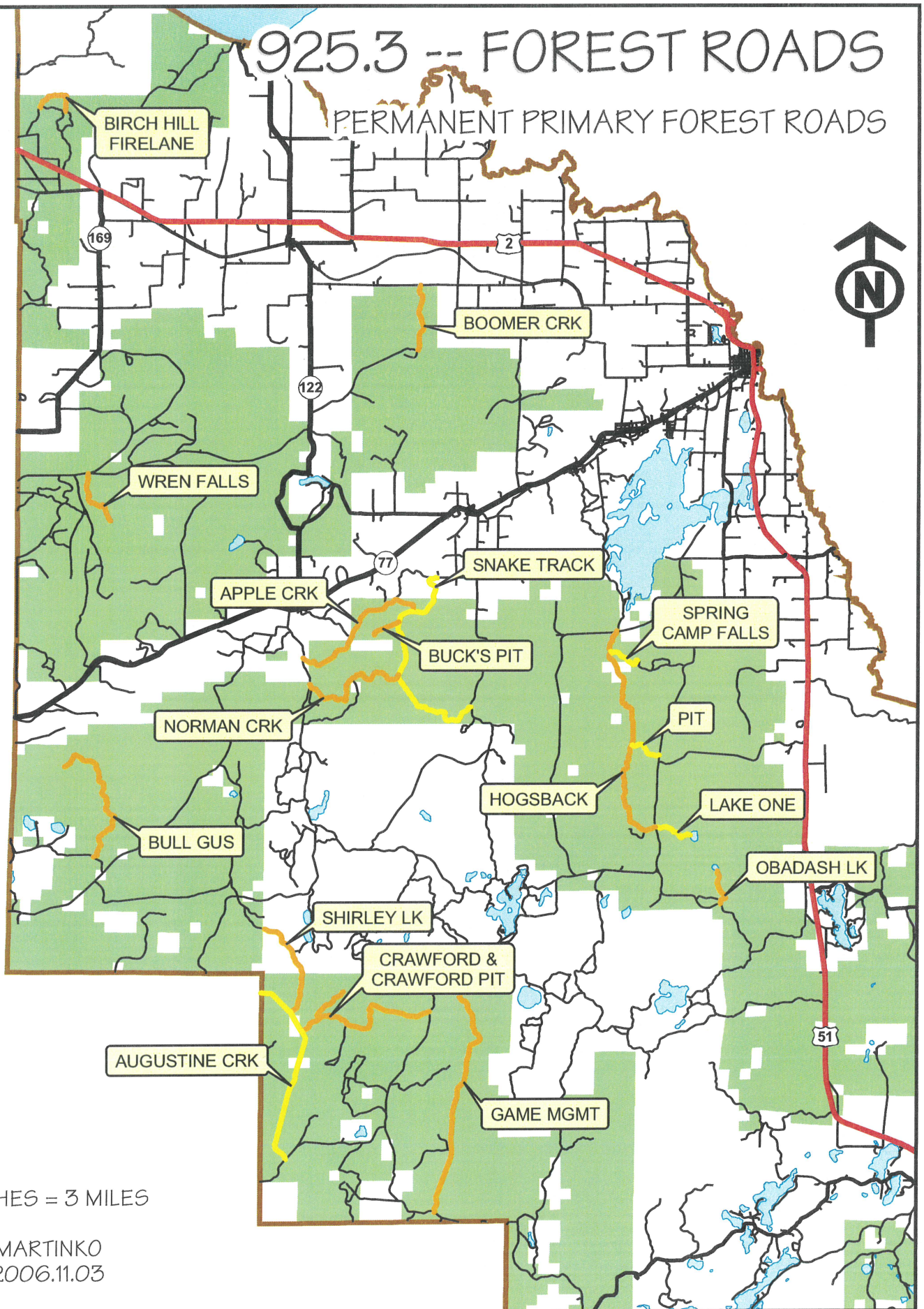
MAINTAINED AND GROOMED BY:
MECCA SKI CLUB
P.O. BOX 76
MERCER, WI 54547

ALL WORK IS DONE BY VOLUNTEERS.
PLEASE DONATE AT A TRAIL-HEAD,
OR TO THE ADDRESS ABOVE.

- CLASSIC SKIING ONLY
 - HOMESTEAD TRAIL
 - SPRUCE HILLS LOOP
- CLASSIC AND SKATE SKIING
 - VOSS LAKE LOOP
 - LITTLE TURTLE LOOP
 - LITTLE TURTLE CUT-OFF
 - WARM-UP LOOP
- CAUTION -- SNOWMOBILES
 - - - SNOWMOBILE TRAIL
 - X TRAIL CROSSING

925.3 -- FOREST ROADS

PERMANENT PRIMARY FOREST ROADS



1 INCHES = 3 MILES

MARTINKO
2006.11.03

925.4 -- ATV MAP

TRAILS AND ROUTES
IN IRON COUNTY

2 INCHES = 9 MILES

MARTINKO
2006.11.03



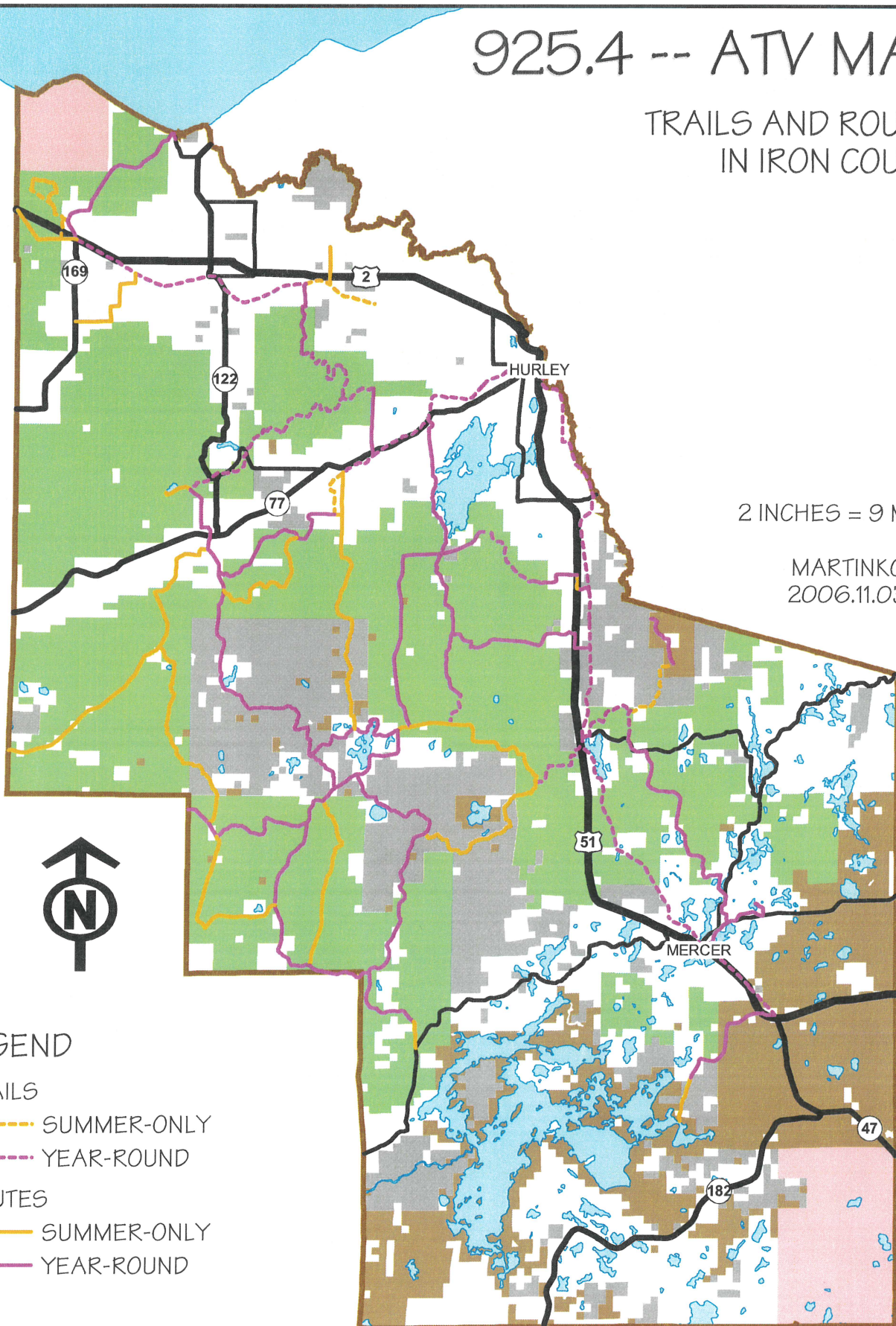
LEGEND

TRAILS

- SUMMER-ONLY
- YEAR-ROUND

ROUTES

- SUMMER-ONLY
- YEAR-ROUND



Iron County Forest Mission Statement

The Iron County Forestry Department will manage the Iron County Forest for the benefit of the residents of Iron County, their guests and visitors.

The Department will maintain, protect or enhance the resources that contribute to the whole of the Forest.

Wherever possible, the Department will attempt to generate maximum sustainable revenue from the resources available on the Forest. This revenue may come from timber products, forest products, recreational opportunities and gravel.

Revenues generated will be applied to labor, equipment and materials needed to manage the Forest. Revenues in excess of expenses will be applied to property tax relief for Iron County Landowners.

In all management endeavors, we will strive for the most efficiency and highest quality.

The Department will do all necessary management to convey a sustainable, healthy and productive forest to the next generation.