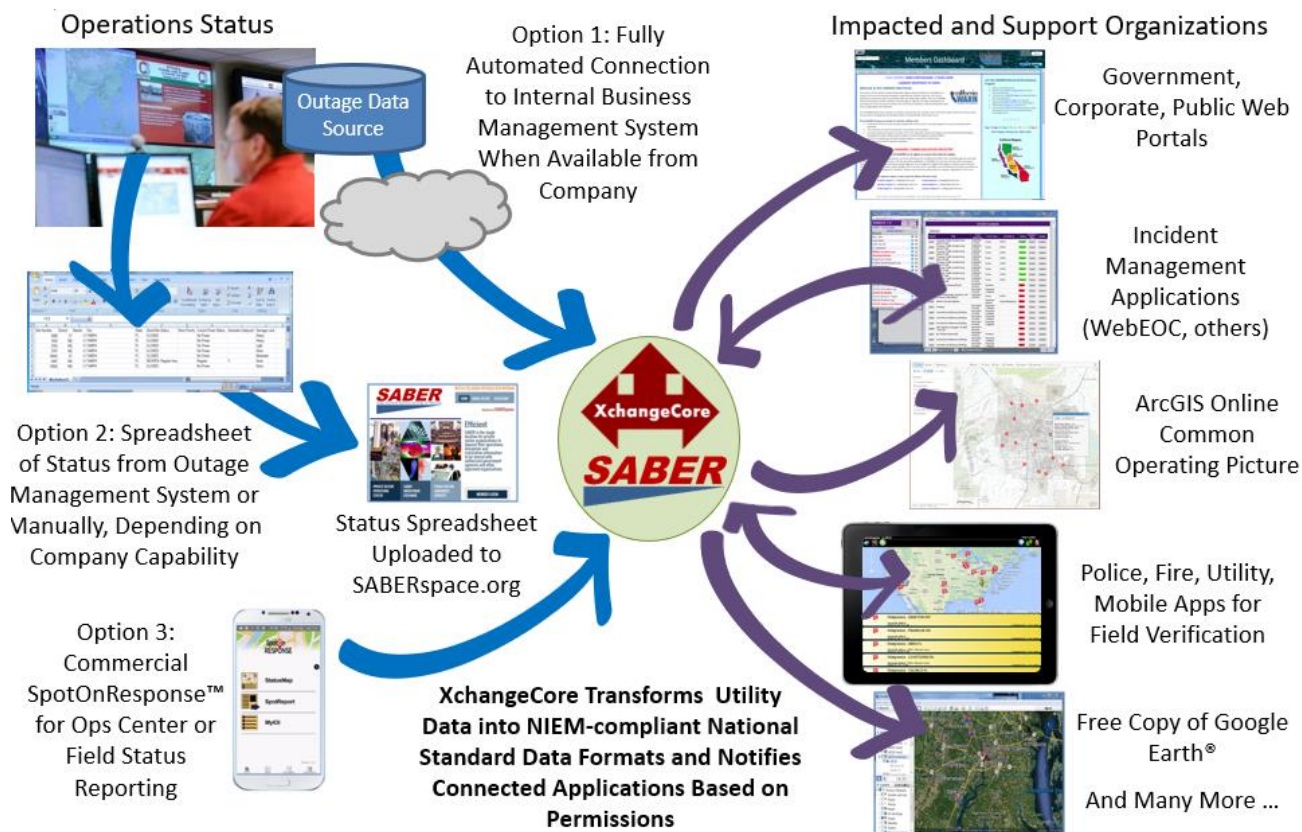


Technology for Participating in SABER: Consume, Orchestrate, Provide



Private Sector Status Is Provided to SABER's XchangeCore

Initially, a company can do as little as upload an Excel® spreadsheet to a secure website (Option 2), but XchangeCore can make the process even easier by automatically receiving disruption data from existing software (Option 1). Some software in use by the private sector can do this automatic sharing to SABER, such as WebEOC™, ETeam™, and SpotOnResponse™. Other applications can be made to work seamlessly to exchange information through XchangeCore using example code that is freely available to companies to connect to XchangeCore.

SABER has teamed with SpotOnResponse LLC to connect the SpotOnResponse mobile app and web application directly to SABER through XchangeCore (Option 3). For more information, see www.SpotOnResponse.com.

XchangeCore Web Services Data Orchestration Exchanges Data

SABER employs XchangeCore Web Services Data Orchestration to transform, orchestrate, notify, and distribute status. Originally developed by the Department of Homeland Security and then enhanced by the Department of Defense and the private sector, XchangeCore



(www.XchangeCore.org) is now operated by a nonprofit for the benefit of the XchangeCore Community. XchangeCore is a fully operational, standards-based solution to sharing all types of information.

As used by the SABER, XchangeCore never reaches into private sector data; rather, private sector organizations send their disruption data – on their schedule and in their existing format – to XchangeCore. XchangeCore converts the disparate data formats used by companies into the National Information Exchange Model incident (NIEM) format to assure subsequent sharing to the public sector based on specific agreements

Viewing Status on Third-Party Applications and Portals

Commercial incident management software used by public and private sector organizations already can send and receive disruption information through existing connectors. WebEOC™, ETeam™, and SpotOnResponse™ and others all work seamlessly to exchange information through XchangeCore. Popular map viewers Google Earth®, Google Maps®, ArcGIS Online®, Bing Maps®, GeoCollaborate™, and Live Earth® already connect with XchangeCore to add private sector disruption information to your existing Common Operational Picture. These existing connectors are usually available for your application at no cost.

To add new applications to ingest the SABER data, there is abundant example code that has already allowed many third-party applications to connect to the XchangeCore middleware. If SABER can match you up with a similar connector, the process should be quite easy.

If you have no viewing application, the www.SABERspace.org website has received a contribution from SpotOnResponse mobile app company to use the SABER Status Map.

Private Sector Outage, Closure, and Restoration Data Examples

The key to a “quick win” with information exchange through SABER is to work with existing data formats provided by private sector organizations and use the technology to convert those formats into national standard format that can be shared.

People have asked, “What data do you need?” The answer is: “Whatever you currently provide about your asset, capabilities, and outage/closure/restoration status.” The intention is not to create a new requirement; rather, our goal is to *share what you share now to more of the right people*.

Below are three examples provided by pharmacy, entertainment, and utility companies that meet these three needs. And you see, what you use today is acceptable for SABER distribution.

Share the Disruption Data that You Use Today		
<i>Provided by Company A</i>	<i>Provided by Company B</i>	<i>Provided by Company C</i>
About Their Facility or Asset		
Store number	Property Name	Distribution Line
Provider ID	Latitude	Latitude
District Number	Longitude	Longitude
Region Number	Address (City, State, Zip)	
Operation Number		
Market		



Store Type		
Store Type Description		
Address Line 1		
Address Line 2		
City		
State		
Zip		
County		
Latitude		
Longitude		
About Their Capabilities		
Retail Clinic	Website Link	DO NOT APPROACH - CALL 800-XXX-XXXX
Open 24 Hours	Number of Hotel Rooms	
About Their Outage/Closure/Restoration Status		
Store/Site Status	Rooms Available for Public	Downed Power line
Store Priority	Rooms Available for Responders	
Current Power Status	Power Source	
Generator Deployed	ATM	
Damage Level	Check cashing	
	Gaming	
	Full meals	
	Snacks	