

Rabbit Anti-Synaptophysin [SP11]: RM0269, RM0269RTU7

Intended Use: For Research Use Only

Description: Synaptophysin is a major integral transmembrane glycoprotein of synaptic vesicles with four transmembrane domains. This protein is present in almost all neurons and neuroendocrine cells throughout the body. An antibody to Synaptophysin is useful for the identification of tumors with neural and neuroendocrine differentiation.

Specifications

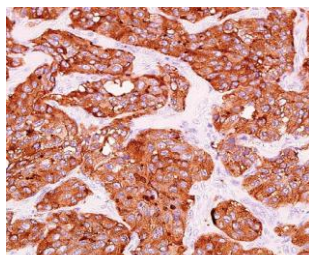
Clone:	SP11
Source:	Rabbit
Isotype:	IgG
Reactivity:	Human
Localization:	Cytoplasm
Formulation:	Antibody in PBS pH7.4, containing BSA and $\leq 0.09\%$ sodium azide (NaN ₃)
Storage:	Store at 2°- 8°C
Applications:	IHC
Package:	

Description	Catalog No.	Size
Synaptophysin Concentrated	RM0269	1 ml
Synaptophysin Prediluted	RM0269RTU7	7 ml

IHC Procedure

Positive Control Tissue:	Pancreas, neuroendocrine tumor
Concentrated Dilution:	25-50
Pretreatment:	Tris EDTA pH9.0, 15 minutes using Pressure Cooker, or 30-60 minutes using water bath at 95°-99°C
Incubation Time and Temp:	30-60 minutes @ RT
Detection:	Refer to the detection system manual

* Result should be confirmed by an established diagnostic procedure.



FFPE human neuroendocrine tumor stained with anti-Synaptophysin using DAB

References:

1. Deficiency of TYROBP, an adapter protein for TREM2 and CR3 receptors, is neuroprotective in a mouse model of early Alzheimer's pathology. Haure-Mirande JV, et al. Acta Neuropathol N/A:N/A, 2017.
2. Isolation of putative stem cells present in human adult olfactory mucosa. Tanos T, et al. PLoS One 12:e0181151, 2017.
3. Complement and microglia mediate early synapse loss in Alzheimer mouse models. Hong S, et al. Science 352:712-6, 2016. Initiation and characterization of small cell lung cancer patient-derived xenografts from ultrasound-guided transbronchial needle aspirates. Anderson WC, et al. PLoS One 10:e0125255, 2015.

Doc. 100-RM0269
Rev. A