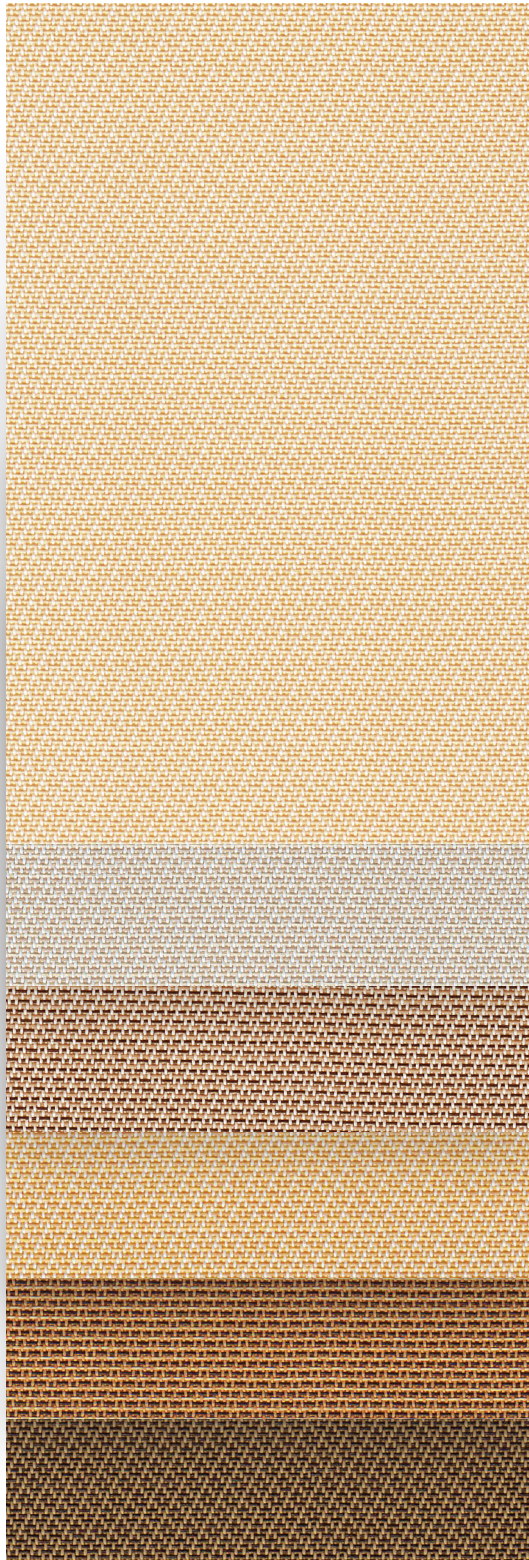


9803™

Decorative | 3% openness



002020
White/Linen

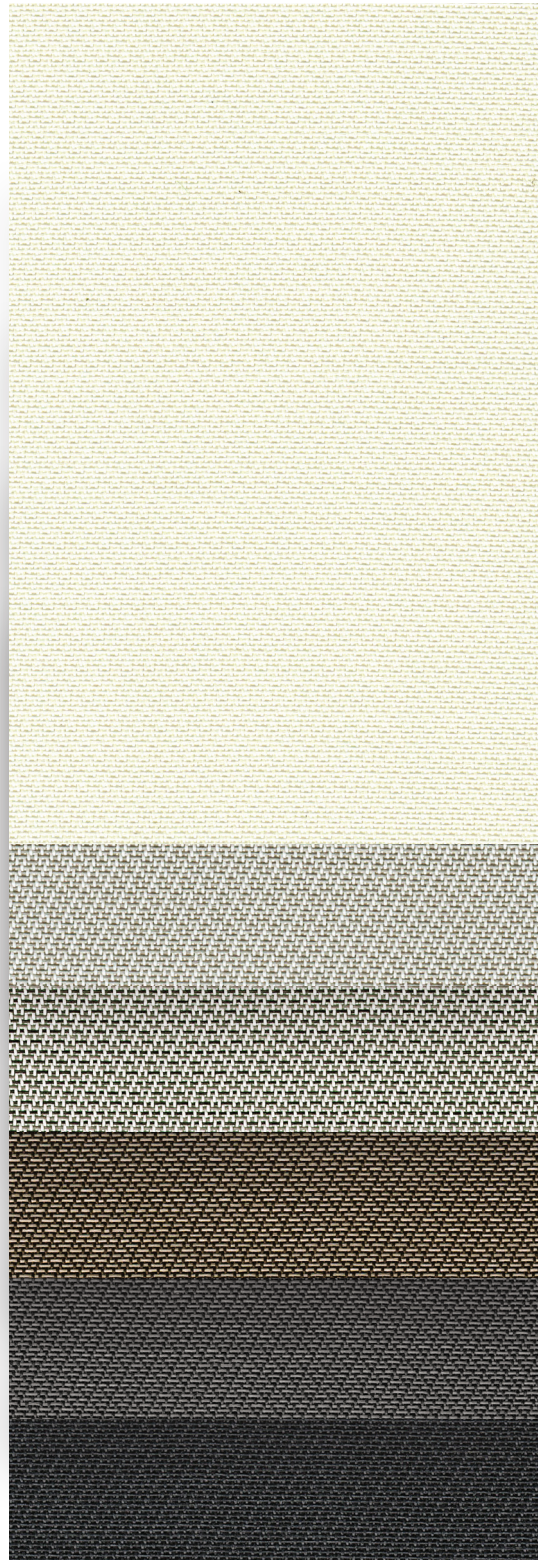
00M151
White/
Sable-Straw

00M164
White/
Sable-Cocoa

00M163
White/
Sable-Mustard

00M153
Sable/
Straw-Cocoa

010030
Sable/Charcoal



002002
White/White

002007
White/Pearl

00M116
White/
Charcoal-Grey

00M85
Charcoal/
Linen-Pearl

030001
Charcoal/Grey

030030
Charcoal/
Charcoal

Specifications

Item Number	009803
Product Category	Decorative
Fabric Style	Offset Twill
Openness Factor	3%
Composition	36% Fiberglass 64% Vinyl
UV Blockage	Approximately 97%
Standard Packaging	Rolls of 30 ly (27 lm)
Width	98 in (250 cm)
Weight	11.6 oz/yd ² (395 g/m ²) ±5%
Thickness	0.025 in (0.64 mm) ±5%

Classifications

Fire Classifications	NFPA 701-10 TM#1, California U.S. Title 19, CAN/ULC-S109-03 Small & Large Flame Test
Bacterial & Fungal Resistance	ASTM E2180, ASTM G21
Environment	RoHS - Lead Free, GREENGUARD Gold
Acoustical Performance	NRC 0.15, SAA 0.15

Fabrication

Cutting: Cold, Ultrasonic or Crush | **Welding:** Radio Frequency, High Frequency, Impulse, Hot Air or Wedge
 We recommend testing all cutting and welding methods prior to use to confirm they meet your individual fabric specifications.

9803™

ITEM	COLOR	SIDE*
002002	White/White	Streetside
		Roomside
002007	White/Pearl	Streetside
		Roomside
00M116	White/Charcoal-Grey	Streetside
		Roomside
00M85	Charcoal/Linen-Pearl	Streetside
		Roomside
030001	Charcoal/Grey	Streetside
		Roomside
030030	Charcoal/Charcoal	Streetside
		Roomside
002020	White/Linen	Streetside
		Roomside
00M151	White/Sable-Straw	Streetside
		Roomside
00M164	White/Sable-Cocoa	Streetside
		Roomside
00M163	White/Sable-Mustard	Streetside
		Roomside
00M153	Sable/Straw-Cocoa	Streetside
		Roomside
010030	Sable/Charcoal	Streetside
		Roomside

FABRIC						FABRIC + GLASS					
thermal			optical			commercial		residential			
Total Solar			Rv %	Tv %	SHGC % Improvement	SHGC					
Rs %	As %	Ts %			Interior	Exterior	Interior	Exterior			
70	12	18	75	15	55	79	0.30	0.15			
70	12	18	75	15	55	79	0.30	0.15			
60	28	12	65	10	47	84	0.34	0.12			
49	38	13	52	11	39	79	0.41	0.14			
54	37	9	58	7	45	87	0.37	0.10			
36	54	10	38	8	32	82	0.48	0.12			
8	88	4	9	4	16	84	0.61	0.11			
18	77	5	20	4	21	84	0.56	0.10			
6	90	4	6	4	13	84	0.62	0.11			
11	84	5	10	4	16	84	0.60	0.11			
4	93	3	4	3	13	84	0.63	0.10			
4	93	3	4	3	13	84	0.63	0.10			
66	17	17	70	13	53	79	0.32	0.15			
61	22	17	64	14	47	79	0.35	0.15			
64	21	15	67	12	50	82	0.33	0.13			
56	28	16	57	13	42	79	0.38	0.15			
59	30	11	63	9	47	84	0.35	0.11			
44	44	12	45	9	34	82	0.44	0.13			
64	21	15	67	12	50	82	0.33	0.13			
56	28	16	57	13	42	79	0.38	0.15			
34	57	9	32	6	26	84	0.49	0.11			
31	59	10	30	7	26	84	0.51	0.12			
25	68	7	25	6	24	84	0.53	0.11			
15	77	8	16	6	18	82	0.58	0.12			

***Roomside:** identified by the dominant diagonal line moving up toward the right;
Streetside: identified by the dominant diagonal line moving down toward the right.

Warranty

5 Year Exterior & 10 Year Interior

Care & Handling

Remove dust with a vacuum cleaner or compressed air. Do not scrub. Do not use solvents or any abrasive substance which might damage the coating of the fabric. Clean with a sponge or soft brush dipped in soapy water using a mild detergent. Rinse with clean water. Leave the blind down until completely dry. You can also very gently rub the fabric with a clean white pencil eraser to remove small stains.

Mermet Corporation
 5970 N. Main Street ■ Cowpens, SC 29330
 Ph 1.866.902.9647 ■ info@mermetusa.com

The fabric performance tests were conducted in accordance with ASTM E891 & ASTM E903-96: Solar Transmittance (Ts), Solar Reflectance (Rs), Solar Absorptance (As), Visible Reflectance (Rv), and Visible Transmission (Tv). Glass performance tests for Solar Heat Gain Coefficient (SHGC) were conducted using the Lawrence Berkeley National Laboratory Window 7.3 NFRC certified software. SHGC % improvement for commercial applications is based on a standard commercial glass makeup of Double Glazing 6 mm | 1/2" air | 6 mm with low E on surface #2. SHGC for residential applications is based on a default residential glass makeup of 3mm clear glass | 1/2" air | 3mm clear glass. Results for SHGC were obtained using the center of glass. Acoustical performance was tested in accordance with ASTM C423-09a: NRC is Noise Reduction Coefficient, SAA is Sound Absorption Average. For up-to-date test results, performance specifications and larger samples, contact the Mermet Technical Department at www.mermetusa.com.

mermetusa.com