

## Member Safety Measures to Support a Stable Distribution System

### Protect Guy-Wires, Power Poles & Lines

A guy-wire, guy-line, or guy-rope, also known as simply a guy, is a tensioned cable designed to add stability to a free-standing structure. Some utility poles buried in the ground have sufficient strength to stand on their own; but others need guy-wires to support loads and to resist ground movement.

While guy-wires are not energized that doesn't mean they may not occasionally conduct electricity, in particular if they are compromised by uncommon forces like contact with motorized vehicles such as snowmobiles, farm equipment and/or livestock.

Repeated contact with livestock can decrease the stability of a pole (see photos below). An unstable utility pole could result in a single member power outage and/or a distribution system disruption.

Members are encouraged to check their property for potential livestock and guy-wire/power pole interactions.



*Cattle rubbing*



*Horses nibbling*

### Use Caution When Moving Equipment

#### Check the height and width of your equipment.

When moving equipment it is important to know their height and width. When working around power lines, enlist the help of a spotter. Note the maximum height for equipment for farm yard entrances or field access roads is 4.15 meters (13.6 feet). For width, you need to stay 7 meters (23 feet) away from power lines when parked or operating.

Equally important, pay special attention when operating grain augers, air seeders, when lifting truck boxes or operating back hoes.

#### Plan ahead before moving tall equipment near or around power lines.

Map your route and remember where any overhead power lines are located. If power lines require lifting, you must contact ATCO at least 10 days in advance for a power line lift. If the height of your load is more than 4.15 meters (13.6 feet) it is considered "over height" and you will need to get a permit from Alberta Transportation.

Remember, ATCO can help you plan the safest and most efficient route - for farm customers call **1-855-277-1670**.



For power outages, emergency power troubles and service requests, contact the distribution system operator for FENN REA: **ATCO Electric**  
Phone toll-free: 1-800-668-2248

**FENN REA**  
Box 31, Fenn, Alberta T0J 1K0  
Phone: c/o Philip Jarmin,  
1-403-740-9384  
Email: fennrea@gmail.com  
www.fennrea.com

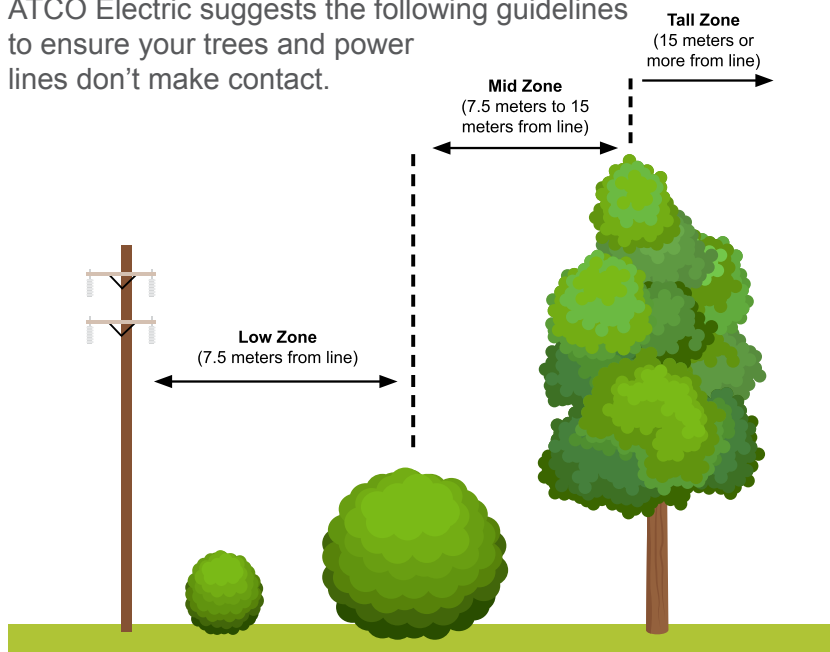
**Battle River Power Coop**  
Member Care & Billing  
Box 1420, Camrose AB T4V 1X3  
Phone toll-free: 1-877-428-3972  
Email: brpc@brpower.coop  
www.brpower.coop

## Trees and Power Lines

Vegetation management is important in maintaining a safe, reliable distribution system. While ATCO Electric has this primary responsibility, members also have a role to play when considering where and what to plant as it relates to the power line location.

Having power lines on or near your property does not mean that you can't plant trees. Do your research or check with a greenhouse or landscaper to determine not only how high, but how wide the tree canopy will be, at maturity.

ATCO Electric suggests the following guidelines to ensure your trees and power lines don't make contact.



- Nothing should be planted closer than 5 meters (roughly 16.5 feet) from the base of a power pole.
- Trees or shrubs planted closer than 7.5 meters (24.5 feet) should be low-growing varieties (e.g., berry hedges, roses, honeysuckle, etc.).
- Tall trees (spruce, birch, pine, etc.) should be planted at least 15 meters (just over 49 feet) away from power lines.

## Power Line Precautions

Plan your projects to ensure you have located all power infrastructure before doing any work in an area where you might come in contact with them. Before digging or driving posts into the ground, contact Utility Safety Partners (formerly Alberta One Call) at 1-800-242-3447 to locate and mark underground power infrastructure. Locate Requests can also be actioned online: [utilityafety.ca/wheres-the-line/submit-a-locate-request/](https://utilityafety.ca/wheres-the-line/submit-a-locate-request/).

When cutting or pruning trees near power lines or poles, always stay at least 10 feet away from power lines. Look up before planting or pruning trees and work at a safe distance by keeping yourself and tools at least 10 feet away from power infrastructure at all times.

Stack and store wisely around power infrastructure. Whether you're storing grain in a bin, a pile of hay bales, or other objects stack and store at least 7 meters (23 feet) away from power lines. Remember that even non-metallic materials such as lumber, tires, straw and hay can conduct electricity depending on dampness and surface dirt.



## Regulated Rate Option (RRO)

The RRO rate may increase or decrease from month to month as it is priced on the open market and subject to many factors relating to supply and demand. If you do not have a contract with an electricity retailer, then you receive the default RRO rate.

For September 2022, the RRO is priced at \$0.15536 per kWh, which is reflected on your enclosed bill. For October 2022, the Battle River Power Coop monthly RRO billing rate for FENN REA members is \$0.22443. The RRO rate is also listed on [www.fennrea.com](http://www.fennrea.com).

Members are free to purchase electricity services from a retailer of their choice. For a list of retailers, visit [ucahelps.alberta.ca](http://ucahelps.alberta.ca) or call 310-4822 (toll free in Alberta).

Information on FENN REA's Code of Conduct Compliance Plan can be found on our website: [www.fennrea.com](http://www.fennrea.com)