



# The Carnegie Courier

## Newsletter of The Mitchell Area Historical & Genealogical Societies

Volume VIII, Number 2

www.mitchellcarnegie.com

December 2014

### Genealogy Corner

The end of another year is an opportune time to once again thank our loyal MAGS members. Your membership and nice comments keep us going strong collecting, filing, and helping with your searches.

Anna Marie Bosma presented a program on E-Books at our July meeting. E-Books are electronic books in a variety of digital formats that can be read on your computer, smart phone, or eReader (Kindle, Nook, iPad, etc.). Free E-Books can be found on “google books” which contains literally millions of books. After you enter your search terms, you can limit your search to free books by clicking “Free google eBooks” halfway down the left side of the page. Further down the column, you can also select a custom date range, or choose a 19<sup>th</sup>, 20<sup>th</sup>, or 21<sup>st</sup> century search. One website that offers many free e-books of interest to genealogists and historians is the Mormon site of *familysearch*.

Anna Marie again took the podium in August to talk about her research on the Quakers that she had been researching in the State of South Dakota. Most people are unaware that 55 percent of Americans have Quakers in their family tree. Anna Marie has a collection of Quaker genealogies.

We sent pictures of all cemeteries in Davison County to be displayed in the genealogical booth at the State Fair the end of August.

The state-organized wagon train celebrating South Dakota's 125<sup>th</sup> birthday arrived in Mitchell at the time of our September meeting so all enjoyed watching the wagons wind through town to the rodeo grounds where they stayed overnight. Our MAHS president and MAGS member Lyle Swenson was one of the speakers during the program. MAGS celebrated by offering a special edition of 125<sup>th</sup> Anniversary Pioneer Certificates.

October was an exceptionally busy month. Doris Roden presented a program on making little genealogy gifts and brought many things that she made that have become keepsakes in her family.

Doris also held a DAR workshop and program at the CRC in October teaching the attendees how to research their family trees and apply for membership in the Daughters, Sons, and Children of the American Revolution. The Genealogy DAR workshop led to a renewed interest in re-viving the Nancy Peabody Chapter of the Daughters of the American Revolution in the Mitchell area and was well attended by people from all areas of the state.

In November Tammy Styles of Scrap-tastic Styles gave a fun program on “Scrap-booking Family Tree/History.” Tammy presented a variety of ideas and material for family scrap-booking for all ages.

Members of MAGS helped decorate the CRC for Christmas and will help at our annual “Christmas at the Carnegie” evening on December 11, 2014.

Congratulations and thank you to those who have accepted MAGS offices for 2015. Those elected are Jim Hunt, president; Karen Pooley, vice president; Andie Sindt, treasurer and recording secretary, and Pam Range, corresponding secretary.

Remember as you share in the holiday season to share those family pictures, stories, and family lore. Alex Haley, author of the famous book, Roots: The Saga of the American Family, said “In every conceivable manner, the family is the link to our past, the bridge to our future.” So, before it is too late, interview members of your family and ask about their memories and family stories and start connecting to your ancestors.

Andrea Harmes-Sindt

**To the reader:** To conserve space and ink, throughout this newsletter these abbreviations are used:

CRC - Carnegie Resource Center

MAGS - Mitchell Area Genealogical Society

MAHS - Mitchell Area Historical Society

SDSHS - South Dakota State Historical Society

Look for the Carnegie Resource Center on Facebook and at [www.mitchellcarnegie.com](http://www.mitchellcarnegie.com).

**If you change your postal or email address, do let us know at 605.996.3209 or [Pam@mitchellcarnegie.com](mailto:Pam@mitchellcarnegie.com).**

## Quakers in South Dakota, Pre-Statehood and After

This story begins, according to research data at the CRC, Mitchell, South Dakota, by Bette Fillmore's and Kenneth Brown's work on 19 April 1978 while plotting Davison County cemeteries and, specifically, the Mt. Vernon Friends Cemetery in Mt. Vernon Township.

In April 2014 MAGS sponsored a workshop which featured three speakers. Each represented Mennonite, Hutterite, or Quakers about their beliefs and way of life. The discussions included the fact that there is an abandoned Quaker, also known as Society of Friends, Cemetery in Davison County.

In the book titled Dakota Dateline 1881 -1956: The Story of Mount Vernon, South Dakota compiled and edited by Maxine Wiseman, copyright 1956, quotes from page 26 read, "Another early church was the Quaker Church or the Friends which was located one-half mile south and three miles west of Mt. Vernon. Rev. John F. Hanson came here from Iowa in 1881 and founded this and five others. The Rev. Hanson made his home on the farm near the church. .... In later years, the people began to move away. In and near Mt. Vernon are two groups of second-and-third-generation descendants of that church, Mr. and Mrs. Maurice Williamson and Charley Boisen and two sons."

A number of the early history books of surrounding counties offered more information about Quaker settlements. This writer, by then very curious, traveled to several neighboring counties where she found abandoned cemeteries, historical records in courthouses, local books, and local folk's memories in Aurora, Jerauld, and Hand counties. Later yet, as the research expanded to the Internet and the South Dakota Archives in Pierre, settlements were identified and visited in Brookings and early Lyman (now Hand) counties.

The Mt. Vernon Friends are included in a white paper report titled "Survey of Churches in Davison County, South Dakota, to 1920." The data were obtained and compiled by Nellie M. (Mrs. J.C.) Lindsey of the local Nancy Peabody DAR Chapter. There is no publication date on the paper; however, we know the Nancy Peabody DAR Chapter was organized in December 1930 and disbanded in December 1973. From that fact we know that the report was completed between those two dates.

A quote from the above 1920 report reads: "The church building of the Mt. Vernon Friends was erected in 1889, meetings having been held in the home of John Frederick Hanson (the founder) and in the schoolhouse, pre-

viously. When there was scarcely any member left in the vicinity, the building was sold and moved away. The graveyard there is protected by a good fence."

The same report also states the record books were sent to William W. Hinshaw, who is well-known for preserving Quaker records in a six-volume Encyclopedia of American Quaker Genealogy. After his death, two more volumes were added. Many of these records can be accessed online at both [Ancestry.com](http://Ancestry.com) and [FamilySearch.com](http://FamilySearch.com).

*Lisa Parry Arnold, a genealogist and tenth-generation Quaker, has recently written a book, Thee & Me: A Beginner's Guide to Early Quaker Records. She also was a part of the original research team of NBC's "Who Do You Think You Are?" television show. She has graciously agreed to present a full-day workshop on April 25, 2015, in Mitchell. Read the article below for more details.*

AnnaMarie Bosma

### SAVE THE DATE - Saturday, April 25, 2015

#### Full-Day Quaker Genealogy Conference in Mitchell

**Quakers in South Dakota:** There were many Quakers in what is now South Dakota during pre-statehood and early statehood. Seven different communities have been identified in the eastern half of South Dakota with records indicating there were also communities in the western part of the state. Their history, how to identify Quakers, their records, and tracing their genealogy will be shared at the conference.

The presenter will be Lisa Parry Arnold, a tenth-generation descendant of Welsh and English Quakers who was born in the Philadelphia area. Lisa is the Senior Content Strategist on the Global Team at [Ancestry.com](http://Ancestry.com), specializing in collections of Quaker, African-American, and Native American records. She is a frequent presenter at national genealogy conferences and is a member of the Association of Professional Genealogists. She has provided research for television programs such as the "Today Show" and "Good Morning America" and was part of the original research team for NBC's "Who Do You Think You Are?" television show. The above information is from the back cover of Parry's book, Thee and Me: A Beginner's Guide to Early Quaker Records, which was published in May 2014.

The conference flyer and signup brochure will be available in early January 2015.

You may be assured of future mailings by contacting either:  
**Pam Range at the Carnegie Resource Center, 119 W Third Ave., Mitchell, SD; 605-996-3209; [pam@mitchellcarnegie.com](mailto:pam@mitchellcarnegie.com)**  
 or  
**AnnaMarie Bosma, 605-351-6891; [ambosma@goldenwest.net](mailto:ambosma@goldenwest.net).**

### Lyle's Corner

My how time flies when you are having fun and we are having fun, each and every day chasing history for someone looking to hook up with their family history. It is such a great feeling when we are able to assist in whatever way we can. It may be newspaper clippings, pictures or some other information, but finding that missing link is so important. We love helping whether it be history or genealogy. If you have not tried us, put us to the test; we are ready, willing, and able.

We have not been able to finish our construction projects we began earlier this year, but they will get done as soon as the contractor can get it all together. We are still hopeful for a large donor or several smaller ones so that we can some day become handicapped accessible and available for all of our citizens to see our beautiful Carnegie. The last estimated cost for the elevator addition is \$205,000.00 with donated matching quartzite rock. The entry would be on the west side of the building. If you have an interest, please call me so we can show you our dream.

Donations continue to flow and at times we get to thinking we have nearly everything that's out there. Then, lo and behold, here come items that we did not know existed. I'm sure you have heard of drug-induced highs; well, they have nothing on us, for when we get these kinds of items we have our own high and we love it!

The past several years we have been building a history of every sheriff who has served Davison County since its beginning, January 8, 1873. We have very little information on some and lots on others, but it makes for interesting reading and we continue to search for more information. Pictures have been extremely hard to find, and I'm sure they are out there somewhere in someone's personal photo album but we don't know where. Do you? Please call with ideas.

A piece of information that came to light recently is the silver six-point star badge that was presented to me when I became a Davison County Deputy Sheriff on March 9, 1961, and was given to me when I was elected Sheriff in 1964. We believe it to be the same badge that

Jacob Koch wore when he served as Deputy in 1903-1904. And, before you say it, "No, I was not there to see it!" On the front of the badge is inscribed "DEPUTY SHERIFF DAVISON COUNTY S.D." On the back was crudely scrawled the letters "KOCH." Since he was the only Koch we know of to serve in Davison County and since we have a group picture with him wearing a star that resembles this one (but the photo is not clear enough to say without a doubt it is the same one) we are making the assumption that it is the same badge. Sheriff Koch was appointed after the death of Sheriff I. E. Kintigh in 1904 to serve out the remaining nine months as Sheriff. He was defeated by Sheriff Cook (note that Koch was replaced by Cook, what are the odds?) in the fall election. Likewise, we have collected information on every U.S. Marshal for both Dakota Territory as well as the state of South Dakota. Again, we have very little information on some and we have done well with others. We do have a great deal of information on, care to guess who? Did you know that back in 1921-1922 we had another Marshal from Mitchell, W.H. King who had been the executive director for the Mitchell Chamber of Commerce? He resigned as Marshal so that he could return to his old Chamber position. As a side note, there were five Marshals during Dakota Territory years and I served as the 18<sup>th</sup> Marshal during statehood.

I would like to thank all of our volunteers who just keep working to make our files more complete as well as those who do some of the repairs around the building and equipment. As book shelves and display cabinets are added to our inventory, casters are added so that everything remains mobile for cleaning and changing out displays. We truly appreciate all of their efforts.

Lastly, I would like to thank everyone who has contributed to MAHS in any way as we could not do this without your help. We continue to search out funding for the replacement of computers (all used when we received them and now causing lots of problems) as well as the day-to-day costs of operation. If you can possibly help, remember we are a 501(c)(3) organization for tax purposes and we cannot exist without your help as we get no tax dollars. Come see what we have to offer.

Lyle Swenson, MAHS President

#### Inform Us of Your Summer and Winter Addresses

The Post Office does not forward bulk mail. They charge 70 cents to return each undeliverable item to us. Help us avoid that expense by giving us your correct addresses for the June and December mailings of the newsletter. Please contact Pam Range at 605-996-3209 or by email at Pam@mitchellcarnegie.com.

You can find the newsletter on our website [www.mitchellcarnegie.com](http://www.mitchellcarnegie.com). If you would like to receive the Carnegie Courier newsletter by email, please contact Pam. Thank you!

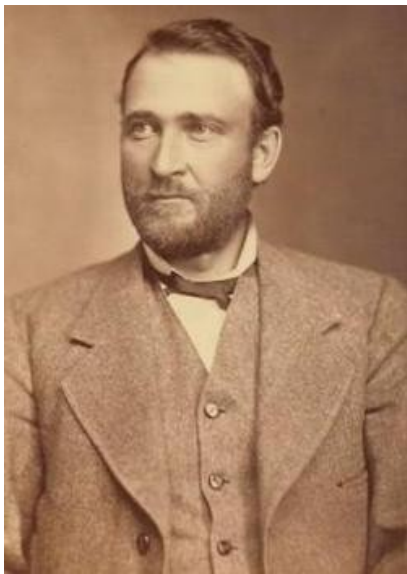
### Persons of Interest

Each month CRC volunteers put together a display board featuring a Person of Interest. This person has had some kind of influence in the growing of the Mitchell area. The following pages are the Persons of Interest for September (Mellette), October (Gale), November (Ronald), and December (St. Nicholas).

#### Arthur C. Mellette

*The last appointed Governor of Dakota Territory in March 1889 and the first elected Governor of the State of South Dakota in November 1889*

Arthur Mellette, son of Charles and Mary Moore Mellette, was born in Henry County, Indiana, on June 23, 1842. He was educated in Indiana and eventually attended Indiana University in Bloomington graduating with distinction. He entered Law School at the University only to have his studies interrupted when he enlisted in the 9<sup>th</sup> Regiment of the Indiana Volunteers on October



Arthur C. Mellette

6, 1864. He served as a substitute for his older invalid brother and experienced many humiliations as a result. He served as a soldier in the Civil War until he was discharged on September 28, 1865.

He served as a substitute for his older invalid brother and experienced many humiliations as a result. He served as a soldier in the Civil War until he was discharged on September 28, 1865.

Mellette returned to the University and finished his studies and obtained his law degree in 1866. Shortly after, on May 23, he married Margaret "Maggie" Wylie.

They moved to Muncie, Indiana, where they began their married life together. Margaret Wylie was born August 6, 1843, the daughter of Theophilis and Rebecca Dennis Wylie. Her father was a professor at Indiana University. They met when Arthur boarded at her family home in Bloomington.

Maggie gave birth to four sons - Theophilis Wylie (1867-1894), Charles Edmond (1869-1964), Arthur Anton (1872-1953), and Joshua Richard (1872-1929).

Arthur and Maggie enjoyed a good life in Muncie where Arthur practiced law, co-owned a newspaper, and served in the Indiana State Legislature. Maggie's health,

however, was delicate and, in 1878, Arthur decided to seek a better climate for her.

He chose Dakota Territory. He was able to obtain an appointment as Registrar of the United States Land Office which was located at Springfield in southern Dakota Territory.

The family arrived in Springfield on a crisp January day in 1879 when the temperature was reportedly 45 degrees below zero. They remained there until the Land Office was relocated to Watertown in 1880. Since there was little housing available, they camped at Lake Kampeska the first summer. Eventually he bought a small store in town where he operated the Land Office from the front rooms and the family lived in the rear of the store.

In 1885 the Mellettes built their Italianate home on Prospect Hill and lived there the next ten years. Arthur was involved in a number of business pursuits in Watertown and Dakota Territory. He was public-spirited and interested in having the Dakota Territory enter the Union as two separate states, South Dakota and North Dakota. His advocacy led to his being a popular and effective political voice. On November 2, 1889, North and South Dakota entered the Union as the 39<sup>th</sup> and 40<sup>th</sup> states, respectively.

Governor Mellette served two terms and decided not to seek a third. He left public office in 1894 to re-establish his law practice and other business interests. However, a series of tragedies beset the family.

In May 1895, the family left Watertown and moved to Pittsburg, Kansas. This move was intended to be temporary; however, Arthur lived just one more year. He died on May 25, 1896, at age 53. Knowing his death was imminent, he asked that his body be returned to Watertown for burial. Maggie continued to live in Pittsburg with their son, Anton, until her death on November 29, 1938. She was 95 years old.

Arthur, Maggie, and sons, Wylie and Dick, are buried at Mount Hope Cemetery in Watertown.

#### The Mellette House

The Mellette House, built in 1885, was constructed of bricks made in a local brick yard owned by Mellette and his friend and business partner, William McIntyre.

The most imposing feature of the house is a massive circular staircase which ascends from the ground floor through the second and into a small tower room located on the third floor. The staircase is said to have been built in Minnesota and sent by train to Watertown for installation in the house.

### **The Mellette House** (continued from page 4 )

Also on the first floor are a library/office, a double parlor, a dining room, and a kitchen with pantry. The second floor contains a sitting room, four bedrooms, and a dressing room. The third floor tower room is a small room which provides an outstanding view of the surrounding countryside. It is primarily a reflection of the architectural style of the period rather than a truly usable room in the house.

After the Mellette family left the house and Watertown in 1895, it served as a private residence. In 1929, it became the home of Watertown's first radio station. Eventually it was divided into an upstairs and a down-



**Mellette House 1885**

stairs apartment and then slid into a steady decline. By 1943 it was condemned by the Fire Department and slated for demolition.

The Mellette Memorial Association was formed to save the house. After much fundraising, the property was purchased for \$500 and work began immediately to restore the house to its former glory.

In 1953, Charles Mellette, the last surviving son, gave many of the original furnishings, personal papers, paintings, and even some of his parents' clothing to the Association. This beautiful restored historic Mellette House, a Watertown and South Dakota treasure, is open to the public for tours.

Karen A. Pooley

### **Lawrence O. "L.O." Gale**

*With Louis Beckwith in 1892  
Brings Corn Palace to Mitchell*

Lawrence O. Gale is considered to have had the greatest impact in the business community of Mitchell of any citizen. Mr. Gale, a druggist, and Mr. Louis Beckwith, a realtor, are responsible for bringing the Corn Palace Exposition to Mitchell from Sioux City, Iowa, in 1892 and keeping it moving forward for many years. Mr. Gale

served as the chairman of the Corn Palace Exposition or Corn Place Committee from 1892 to 1907.

Lawrence O. Gale was born on February 25, 1851, at Weston, Vermont, to David Gale and Angeline Pease. In 1869 he traveled with his parents to Marshalltown, Iowa. His father is listed as a broom maker. Lawrence moved to Anamosa, Iowa, in 1874 and opened a drugstore, the same year that he married Kate Davenport in Monticello, Iowa.

Kate was born March 12, 1851, in Elkland, Pennsylvania, and moved with her parents to Monticello, Iowa, in 1859. She completed her musical education in New York in 1867.

Four years after their marriage, the Gales spent a short time in Sioux Falls before moving to Rockport in Hanson County, Dakota Territory, and building a drugstore. When the railroad bypassed Rockport and Firesteel, Gale moved to Mitchell to start a drugstore in 1880. He constructed a two-story building which measured 22 feet by 112 feet.

The location of his first drugstore is unknown, but it may have been at 113 North Main Street as this is the first property he purchased on March 31, 1880, from John Lawler for \$100. Later he built a store at 209 North Main Street. The dimensions of the building were 25 feet by 142 feet or 3,500 square feet. He carried \$35,000 in inventory. His business was considered one of the finest drugstores in the Midwest.

The north side of the store consisted of drugs, chemicals, patent medicines, perfumes, and cigars with the prescription counter in the back. The south side inventory was comprised of silverware, tea sets, urns, cake baskets, jewelry, and clocks of all kinds including marble ones with cathedral gongs, lamps, books, stationery, toys, and musical instruments. The center of the floor was occupied by two parallel rows of show cases filled with beautiful silver and gold watches, jewelry, diamond ring sets, charms, silver knives, forks, and spoons, artist materials, and writing desks. One other department had paints, oils, glass, and wall paper.



**The Gale Building at 201 North Main Street**

**Lawrence O. Gale** (continued from page 5)

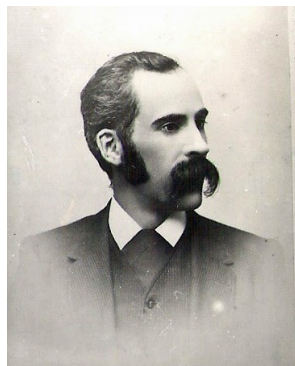
He was one of the people who in 1881 incorporated the Congregational Church in Mitchell. L.O. Gale was a charter member of the South Dakota Pharmaceutical Association when it was created in 1886 in Mitchell at the Alexander Mitchell Hotel. He had a great interest in the growth of Mitchell, and he was elected as an alderman from the Fourth Ward. He owned a great deal of property which brought him a considerable rental income.

He built the Gale Theatre at the cost of \$60,000 in 1906. At that time, the Gale Theatre was distinguished as one of the few theaters with a double balcony. When Mr. Gale left Mitchell in 1907, he turned his theater over to Maurice Jenks. The theater burned down on March 26, 1914, and was rebuilt in 1915. The building was destroyed by fire again on May 1, 2004

Mr. Gale was very aggressive in the Mitchell real estate market. He owned property at 113-117 North Main St., 315 North Main St., 201 North Main St. (the Gale Building), 207-209 North Main St. (Gale Drug Store), 719 West McCabe, 801 West Williams, Second and Rowley, 201 East Second Ave., and 412-429 East Sixth Ave. He also owned 160 acres west of Mitchell and 160 acres northwest of Mitchell.

After an illness due to cancer, his wife Kate died on the operating table December 6, 1890, in Chicago, Illinois, at age 39. She is buried in Graceland Cemetery in Mitchell.

Then, on August 8, 1907, he married Juliette Thomas, daughter of Mr. and Mrs. L. C. Thomas. He was 53 years old and she was 18. He had taken an interest in the young girl for many years and later sent her to college. Mr. Gale resigned as the chairman of the Corn Palace Committee the night before the wedding and sold most of his holdings in Mitchell. The Gales traveled to the east coast for two months.

**Lawrence O. Gale**

By 1909, Mr. Gale is listed as owning the Gale-Evans Company, manufacturer of toilet article preparations in Minneapolis, Minnesota. This listing continues to 1930.

By 1918, Lawrence and Juliette had different addresses and, in 1920, legal papers indicated he was a single man. His death certificate, September 3, 1931, lists him as divorced. He, too, is buried in Graceland Cemetery.

Karen A. Pooley

**William R. Ronald**

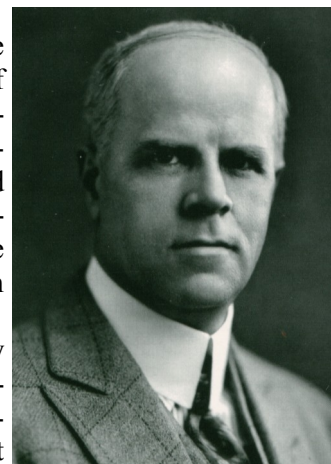
*Prairie Editor, Publisher, and Architect of the Agricultural Adjustment Act of 1933 (AAA)*

William Roy 'Bill' Ronald, editor of The Daily Republic for more than 41 years, did more than any other man in South Dakota to promote agriculture.

Born on June 1, 1879, at Grand View, Iowa, he was orphaned at the age of three and was raised at the farm home of an aunt. He graduated from Monmouth College in Illinois at the age of 19.

Guided by the belief that the fate of the newspaper, the City of Mitchell, the State of South Dakota, and the entire nation depended on agriculture, Ronald championed the cause of agriculture from the time he bought the Mitchell Printing Company on November 1, 1909.

Mr. Ronald supported every political movement which intended to give justice to agriculture from the time of the first farm deflation immediately following World War I.

**W. R. Ronald**

Some ideas of the way the farmers of South Dakota felt about Ronald was shown at a meeting of farmers who had been the first AAA committeemen. That meeting was held November 15, 1948, to honor "the warrior who had carried on the fight for the kind of program which will give the farmer prosperity." Al Barnes, Huron, former Production and Marketing administration state chairman, called Mr. Ronald "One of the greatest political leaders in agricultural history." Jack Bailey, then public relations director for the South Dakota Farmers Union, said "The Daily Republic has provided the ferment which is needed not only by journalism but by us all. Ronald not only fights for farmers, but he trusts and believes in them. There is a mutuality of respect between Ronald and the farmer."

When the great drought struck South Dakota in 1931, it was beyond the ability of the state and its people to meet the challenge. Mr. Ronald set the wheels in motion to bring the American Red Cross into the state to aid the drought-stricken area.

As the agricultural slump continued, Mr. Ronald, with United States Secretary of Agriculture Henry Wallace and M. L. Wilson, formed an unofficial committee which traveled thousands of miles at its own expense to work out a national farm program. The Voluntary Domestic

**William R. Ronald** (continued from page 6)

Allotment plan which emerged as a result of the labors of the three men was endorsed by President Franklin D. Roosevelt.

After the inauguration of Roosevelt in 1933, he called a national farm conference and Mr. Ronald was made chairman of a subcommittee which remained in Washington and worked out the recommendations by the conference for farm legislation. The Agricultural Adjustment Act was the result of that work.

Under Mr. Ronald's urgings many farmers during the drought switched to sorghums to feed their cattle.

For years, Mr. Ronald held a series of meetings with farmers to find out what kind of farm program they wanted. This work culminated when Rep. Harold Lovre (R. SD) introduced a bill embodying those principles of a self-supporting program.

Mr. Ronald was also instrumental in the formation of the Associated Missouri Basin Conservationists, an organization which opposed construction of huge dams on the Missouri River until a sound agricultural program could be completed.

At the beginning of his career, Mr. Ronald was first a newspaper solicitor in Iowa and then at the Chronicle in Marion, Indiana. In 1991, Ronald began a seven-year stint with the Sioux City Tribune in Sioux City, Iowa. In January 1908, he became an editorial writer for the Independent Press in Sioux Falls, South Dakota, and, on November 1, 1909, he became the owner of the Mitchell Printing Company which then was doing job printing and publishing a weekly and a daily newspaper.

Under his direction, the circulation of The Daily Republic rose to more than 16,000, one of the largest circulations in the United States for a newspaper published in a city the size of Mitchell.

Mr. Ronald was a member of the Dakota Wesleyan University Board of Directors and of the Mitchell Parks Board. As president of the Mitchell Chamber of Commerce he organized the Retail Merchants Association and was responsible in a great measure for the founding of the Abbott House and the administrative agency, South Dakota Children's Aid.

Mr. Ronald passed away on April 3, 1951. He was survived by his wife, Hazel Stebbins Ronald, and a son, Malcom. He was preceded in death by his wives, Ethel Bowman Ronald and Mabel Kelly Ronald, and a daughter, Mary Joyce.

Source: The Daily Republic, April 3, 1951.

Karen A. Pooley

**Saint Nicholas**

The true story of Santa Claus begins with Nicholas, who was born during the third century A. D. in the village of Patara. At the time the area was in Greece and is now on the southern coast of Turkey. His wealthy parents, who raised him to be a devout Christian, died in an epidemic while Nicholas was still young.

Obeying Jesus' words to "sell what you own and give the money to the poor," Nicholas used his entire inheritance to assist the needy, the sick, and the suffering. He dedicated his life to serving God and was made Bishop of Myra while still a young man. Bishop Nicholas became known throughout the land for his generosity to those in need, his love for children, and his concern for sailors and ships.

Saint Nicholas died on December 6, 343, in Myra and was buried in his cathedral church. The anniversary of his death became a day of celebration known as St. Nicholas Day, December 6 (December 19 on the Julian calendar). Through the centuries many stories and legends have been told of St. Nicholas' life and deeds. He has continued to be venerated by Catholics and Orthodox and honored by Protestants. By his example of generosity to those in need, especially children, St. Nicholas continues to be a model for the compassionate life.

John Pintard, the founder of the New York Historical Society, promoted St. Nicholas as patron saint of both the society and the city in 1804. In 1809, Washington Irving joined the society and published a satirical fiction, *Knickerbocker's History of New York*, with numerous references to a jolly St. Nicholas character. This was not the saintly bishop but instead an elfin Dutch burgher with a clay pipe. In 1821, with the publication of the *Children's Friend*, "Santé Claus" arrived from the North in a sleigh with a flying reindeer and fit a didactic mode, rewarding good behavior and punishing bad, leaving a "long, black birchen rod...directs a Parent's hand to use when virtue's path his sons refuse." Gifts were safe toys, "pretty doll...peg-top, or a ball; no crackers, cannons, squibs, or rockets to blow their eyes up, or their pockets. No drums to stun neither their Mother's ear, nor swords to make their sisters fear; but pretty books to store their mind with knowledge of each various kind." The book also notably marked S. Claus' first appearance on Christmas Eve, December 24, rather than December 6. The jolly elf image received another boost in 1823 from a poem destined to become immensely popular. "A Visit from St. Nicholas" is the poem which is now better known as "The Night Before Christmas." Source: www.stnicholascenter.org.

(continued on page 9)

### A Valued CRC Volunteer

This December 2014 issue of the Carnegie Courier newsletter features several “Persons of Interest” who were key players in the history of Mitchell. Let us hope that fifty years from now the Mitchell Area Historical Society will continue to thrive and that the December 2064 newsletter will include Lyle Swenson as a “Person of Interest.” Without his leadership as a founding member of MAHS in 1988 and his continued dedication and hard work, it is fair to state that the history of Mitchell would not be available to present or future researchers nor would the 1903 former Mitchell Carnegie Library have been preserved as a place to house the archives of MAHS and of MAGS. Since Lyle Swenson never “toots his horn,” herein it will be “tooted” for him.

One could easily use all 12 pages of this Carnegie Courier issue to write about Lyle Swenson's achievements. His approach to membership in an organization was quoted in the Sioux Falls Argus Leader in 1989 as “Anything I've joined, I've always tried to get involved and do my part. I'm not a believer just to say 'I belong to that organization and that organization.' If I join something, I want to contribute.” a/

In 1989, Swenson became president of the National Sheriffs' Association. He pointed out that “You don't have to come from a metropolis to go through the ranks and head up the organization. You can come from Little Town, America, or Mitchell, South Dakota, and you can do it if you've got the guts and the gumption.” b/

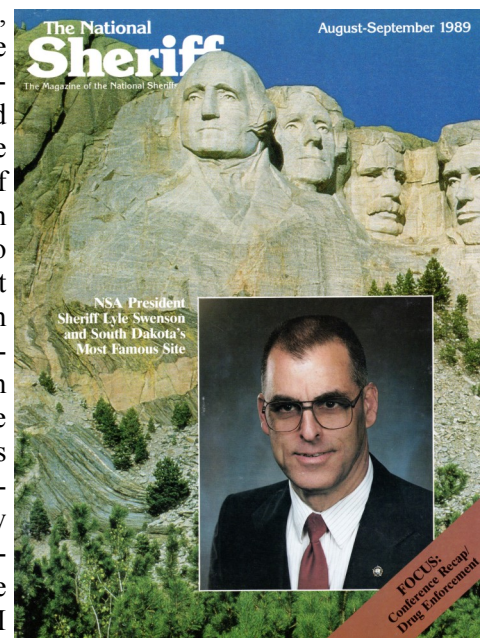
Swenson served as Davison County Deputy Sheriff from March 1961 to January 1, 1965, and as Sheriff from January 1, 1965, to March 24, 1997. He was appointed by President Bill Clinton to the position of U.S. Marshal for the District of South Dakota beginning March 5, 1997. After the election of Republican President George W. Bush, Swenson retired in 2002. Chief Deputy U.S. Marshal John Whitelock, who served under Swenson, said when Swenson's retirement was pending, “He's been an outstanding Marshal and I would hate to see him go.” c/ At Swenson's retirement banquet, Whitelock paid the ultimate compliment by praising Swenson as the best Marshal he had ever worked under.

In 1989, when Swenson became president of the National Sheriffs' Association, South Dakota Governor Bill Janklow stated that “Lyle was born to be a sheriff. He's as straight an arrow as I ever met. He is totally fearless. When you walk down a dark alley at night you feel awfully safe when a Lyle Swenson's walking with you.” d/ Governor Janklow did not know that from as long ago as

1060 A.D. an ancestor of Swenson has served during each century in a law enforcement capacity, often as a sheriff or “lensman” (the Norwegian name for sheriff). Also among Swenson's ancestors are three English kings and a Norwegian king. Swenson's brother, Sherrill (who passed away in 2012), researched the ancestry of the family back to 1060, an awe-inspiring accomplishment, and documented each person. e/

The National Sheriffs' Association publishes The National Sheriff, a bimonthly magazine. Swenson is pictured on the covers of the August-September 1989 and April-May 1990 issues since he became president of the 28,000 member organization in 1989 for a one-year term. In a two-page article he listed his principles to assure high-quality sheriff office performance: dedication, training, cooperation, involvement in the community, communication, and upholding of the long heritage of the office. f/ With satisfaction he also noted the recent completion in 1989 and nationwide distribution of a Sheriffs' Code of Ethics. Perhaps even more significant in today's law enforcement environment, he wrote to the Sheriffs, “I believe you should educate yourself as well as your staff to this code and then follow it.” g/

Swenson is presently software sales consultant for Zuercher Technologies, a firm that was launched by young Michael Zuercher from his parents' basement in Pierre. The software program, among other functions, includes filing of records, accounting, and operation of the 911 emergency system. The program has so far been installed at law enforcement agencies in 28 states. The company has expanded so greatly that a large building is being constructed in Sioux Falls to provide sufficient



**Lyle W. Swenson , President 1989-1990, National Sheriffs' Association, on the cover of The National Sheriff magazine of August-September 1990.**



**A Valued CRC Volunteer** (continued from page 8)

operations and work space. Swenson refers to Michael Zuercher, the inventor and designer of the software, as a brilliant 31-year old.

The work described to this point is only part of Swenson's active life. This year he received his 50-year chevron from Lions International and his 50-year pin from the Mitchell Masonic Lodge.

Organizations in which Swenson has served as president, an officer, a board of directors member, or a committee chairman include Sons of Norway, Mitchell Area Historical Society, Mitchell Lions Club, Governor of International Lions Club District 5, SE, South Dakota Children's Aid (Abbott House), Community Alcohol/Drug Center, Methodist Hospital, United Methodist Health Care Association of Greater Mitchell, Inc., Wesley Acres Retirement Center, Salvation Army, Mitchell Masonic Building Association, Mitchell Volunteer Fire Department, South Dakota Board of Charities and Corrections, South Dakota Board of Pardons and Paroles, Columbia Management Services, Inc., South Dakota Sheriffs' Association, and South Dakota Peace Officers Association. Swenson is a 32nd degree Mason and is a member of the Mitchell Masonic Lodge AF & AM Resurgam Lodge #31 (Master), El Riad Shrine, Yankton Scottish Rite, and Gavelers High 12 (Sioux Falls).

Awards received by Swenson include Governor's Award for History (2008), Lions International "Melvin Jones Fellow" (Mitchell Lions Club, 1997), South Dakota Sheriffs' Association Honorary Life Member (1997), induction into Corn Palace Rodeo Stampede Hall of Fame (1997), The Best of South Dakota Awards Top 100 (Eyes on You magazine, 1993), Book of Golden Deeds Award (Mitchell Exchange Club, 1993), Community Service Award (Mitchell Area Chamber of Commerce, 1991), Sheriff Lyle Swenson Day (proclaimed by Governor Bill Janklow, June 25, 1989), and Outstanding Law Enforcement Officer (Mitchell Exchange Club, 1966 and 1988).

Thank you, Lyle, from your Carnegie volunteers!

- a. Nelson, Todd, Argus Leader, June 11, 1989, p. 1:2-5.
- b. Ibid.
- c. Williams, Lee, Argus Leader, March 20, 2001, pp. 1A and 6A.
- d. Nelson, op. cit.
- e. Swenson, Sherrill, "Born to be a Sheriff?", circa 1995, p. 14.
- f. Swenson, Lyle W., The National Sheriff, August-September 1989, pp.4-5.
- g. Swenson, L. W., The National Sheriff, April-May 1990, p.4.  
Kathryn C. Crockett

**St. Nicholas** (continued from page 7)

The St. Nicholas Center, a 501(c)(3) nonprofit organization, is located in Holland, Michigan. It is a virtual center (website) where people can learn about St. Nicholas. It provides resources for families, churches, and schools. It is also a world-class professional traveling exhibit and offers display and ac-

tivity kits appropriate for schools and churches. To learn more about St. Nicholas go to [www.stnicholascenter.org](http://www.stnicholascenter.org). The center was created by Carol Myers. With thanks to Jim Rosenthal for inspiration and support, Myers hosts the center and responds to the many visitors to the site.  
Andrea Harmes-Sindt

**MAHS Programs - July through December 2014**

The monthly program meetings feature persons who add to knowledge of Mitchell history and other topics. Meetings start at 7:00 p.m. and have no business sessions.

**July 14:** Dr. Alan Outram, University of Exeter, England, spoke about "Violence and Death in Bronze Age Bohemia." He and Dr. Adrien Hannus, head of the archeology department of Augustana College, Sioux Falls, described ochre (for red-tone coloring) and a mixed find of mussel shells and beaver bones at the Mitchell dig site.

**August 18:** Barb Young, a descendent of Mr. and Mrs. Andrew Ellwein, displayed many items of her collection of Coca-Cola memorabilia. She showed pictures of many other items and included entertaining family anecdotes. Her grandfather began the Coca-Cola Bottling Company in Mitchell in 1905.

**September 15:** MAHS annual dinner meeting was held at the First United Methodist Church (across West Third from the CRC) with a delicious pork barbecue prepared by Doug Carlson and friends. At 7:00, the program moved to the CRC with John Timm portraying, in period attire, Arthur C. Mellette, the last appointed Governor of Dakota Territory and the first elected Governor of the State of South Dakota in 1889. The Mellette House in Watertown has been preserved for visitors.

**October 20:** Jim Wagner, instructor of the Culinary Arts program at Mitchell Technical Institute, provided two "treats" - his very informative talk and delicious cheesecake. The Culinary Arts program started at the Vocational Technical School campus and has continued to flourish at the new MTI Campus, The Oak Room gives diners a memorable experience of elegant cuisine in a beautiful setting, all done through Wagner's leadership in this quality two-year course.

**November 17:** Brenda Oleson, with her husband Dan Hauser, related the remarkable history of Einstein's Costume Rental. Brenda, as an entrepreneur and a public-spirited promoter to improve Mitchell's Main Street, told of starting in Platte and adding Mitchell and Chamberlain to the expanding consignment business (up to 2500 clients) at Brenda's Second Impression Palace (412 North Main) and at the former Feinstein store site (317 North Main). Now Einstein's is known and is used nationwide to supply costumes for plays, musicals, and other purposes.

**December 11:** The Mitchell Barbershop Harmony Chorus and inspirational pianist Wanema Wieczorek again bring the Christmas spirit to the CRC with a *cappella* carols sung by the Chorus reverberating throughout the CRC and with a sing-along led by Wanema at the piano. Tasty goodies and hot cider complete the evening. The Mitchell Food Pantry is the beneficiary of donations.

### 2014 and 2015 Mitchell Area Historical Society Members

Membership support is vital to the continued success of MAHS. The following persons are paid members in 2014 and 2015. Special appreciation is extended to the many members for their generous contributions included with their dues. You truly encourage us to keep working hard to make the CRC an increasingly valuable repository and research source of Mitchell history. Inform us of any needed corrections by calling 996-3209 or email Pam@mitchellcarnegie.com.

#### 2014/2015 MAHS Members

& = 2015 member \* = Donation

John and Connie Ackerman	Jerry and Carolyn Damon	Thomas and Nancy Johnson	Bruce Pearson &
Jon Airhart &	Earl Davis	Thomas J. A. Jones *	Norman and Faye Pearson
Lee Anderson *	Tom and Charlys Dice *	David and Karen Jorgenson	Janice Peters
Stella Ramos Angelucci	Dennis and Pat Dicus *	Paul and Linda Kaus	Delbert and Marie Peterson
Michael Asher &	June Danforth Downs	James and Carol Kenton *	Harlan and Carol Phinney
Kenneth Axemaker	Katherine Drew *	Dave and Tonya Klingaman	Gordon R. and Betty J. Plowe
Betty Baird *&	James V. Ellwein	Daryl and Velda Kilstrom *	Mel and Karen Pooley
Joel and Sandra Baier *	Leonard and Kathleen Ellwein	Gary and Jeanice Korzan *	DeEtta (Riggert) Powell *
David Bale	Rod Evans	LaVonne Kothe	Dean Randall
Steve Bamberg	John J. (Jay) Fernholz	Steve Kracht	Pam Range
Ellen Jo Baron	Chris and Carole Festvog *	Lloyd and Bernice Kucker *	Carol J. Rees
Keith and Glynn Bartels *	Don and Donna Fitzler	Deanna Kurtenbach *	Jerry and Mavis Regynski &
Robert and Gladys Bassett *&	Steve Frank *	Wayne and Connie Laird *	Paul and Tamie Reiland *
John Bauman *	Ernest Frey	Ross and Caroline Lee *	John and Mary Roeder
Bertha Beach	Ronald Fuchs	Paul and Fredda Lesser *	Ronald M. and Betty Ross &
Harvey D. and Sharon Beedle *&	Jerry and Laurie Garry	Dale and Sheila Letcher *	Darwin and Pat Roti
Pat Carr Bellinghiere *	Ronald and Sheila Gates	Jeff and Linda Logan *	Letha Rowley
Marjorie Bertsch *	Jarold and Jeanette Gebel &	Rolland and Ella Loon *	John and Tona Rozum
Kermit Black *	Jean Geyerman *	Jerry and MaryAnn	Cynthia Elyce Rubin *
George and Michele Bittner	Rick Geyerman	Lulewicz *	Annika Russell
Boyd and Evelyn Blumer *	Floyd Gillis *	Troy Magnuson	Helen H. Rutan *
Michael Bollinger *	Rev. Loren and Helen (Hersey)	John and Judy Magstadt *	Sharon Walz Ryan
Gary and Jan Bowar *	Gisselbeck &	Dorothy M. Malde *	Dorothy A. Sattler *
Don Boyden *	Dick and Patricia Goldammer	Richard and Lucinda (Weller)	Doris Schaffer *
Bob Brady *	Howard and Darlene	Marcello *	Joseph and Janice (Kaus)
Bob and Murle Breer	Goldhammer	Tom and Roberta McEntee	Schlingen *
Philip Breidenbach *	Richard Gould	Mildred McGrew *	Bernie and Maxine Schmucker
Dale Brick	Gerald E. Grady *	Susan McIntosh *	Ron Schmierer *
Arvid Brown	Reva G. Gregg	James and Donna McLaird *	John and Debra Scott *
Sherri Brummett	Larry and Judy Griffith	Barbara (Bruske) Mecham *	Wallace A. Scott *
Dennis and Zelma Buchholz	Roger Grohs, Jr.	Carol Mertens	Lou and Carol Sebert *
Ryan and Stacy Buckley *	Earl and Ruth Guymon	Sally Mescall	Patricia Sedlacek *
Harriett Bunch *	Noel and Janet Hamiel	Louise Metz *	Ruth M. Sejnoha
Florence Kimball Burau *	Becky Handrahan	John and Pam Miedema *	Gary and Kay Shafer
Larry and Deb Cap *	Dvonne Hansen *	Patricia K. Miller *&	Dave and Marian Sills *&
Pat and Barb Carlon *	Gary Hansen *	Vivian Miller *	Andrea Sindt *
Douglas and Bonnie Carlson *	Jeff Hansen *	Ralph and Jean Minehart *	Joseph P. Skelly and Bonnie
Marlyn and Corinne	Milton and Marjorie Hanson *	Dave Mitchell *	Scott
Christensen	Gayle Harmon *	Bill and Janese Montgomery *	Dale and Anne Smith *
Alice Claggett *	Mary E. Hase *	Arlene Moore	Richard Stedman *
Pat and Bobbie Clark *	Bonnie Hatzenbuhler	Steve Morgan	Edward and Jane A. Stone *
Sharon Clunk	Myrna Hayen	Janet Harmon Murphy	Wayne and Myrna Stone *
Dennis and Nancy Comp	Marion T. Hersey	Dennis and Beth Nemmers *	Dean V. Strand *
Mary Ellen Connelly *	Ed and Lynette Higgins *	Luvern and Elaine Neugebauer	Helen A. Strong *
Carla Cooper *&	Pat Hohbach *	Genevieve "Jackie" M. Newell *	Jim Strong
Kenneth and Valerie Cox *	Lori Holmberg *	Charlotte Nicholson *&	Gaylord D. and Mary Stumm
Rosy Cox *	LouOra Houk *	Pat and Patty O'Connor *&	Donald H. Swanson *
Kathryn C. Crockett *&	James and Gerry Hunt	Patty O'Connor *	Lyle and Irene Swenson *
Glenn and Norma	Merv and Dottie Iverson *	Loyd and Maxine Oleson	Vee Anne Sykora
Cunningham *	Ron and Eleanor Jenkins &	Charles and Linda Oster	Shirley Tanner
	Gary D. Johnson *&	Doug Papendick	Delores Thomas
	James B. and Joan Johnson	Gene and Mary Paradeis *	Perry G. Thompson *
	Lisa L. Johnson *	Jerry and Ruby Pattison *	Evelyn Thomsen *

Gordon and Shirley Thomsen \*  
 Bart Thune \*  
 Kevin Thurman \*  
 Margaret Toben  
 Lois Loon Topping \*  
 Ione Tracy \*  
 Ken and Lois Tracy \*  
 Larry and Ruth VanNatta \*  
 Marilyn K. Stumm Valberg  
 Donna Van Overschelde  
 Peggy Wall \*  
 Donna Weiland \*  
 Richard F. Weller \*  
 Gary Widmann \*  
 Wayne Wilcox  
 Jim and Mary Willems  
 John and Mary Wingfield &  
 Donna Wold  
 Paul J. and Sheron Wolf  
 Vernon M. Wulf \*  
 Don and Barbara Young\*  
 Margaret A. Zard \*

#### MAHS Life Members

Kenneth, Sr. and Gladys Baldwin\*  
 AnnaMarie Bosma \*  
 Norma Cameron \*  
 Charles W. Deter \*  
 La Dawn Stenson Dykhouse \*  
 Dale and Marla Holm \*  
 Laurie Langland \*  
 Jeff Logan \*  
 Russell and Mary Overbay  
 Carol Ragle \*  
 Dean Sorenson \*  
 Lois Stenson Estate\*  
 Beth Walz

#### MAHS Corporate Members

Bailey Metal Fabricators, Inc.  
 John W. Claggett  
 Cortrust Bank  
 Iverson Chrysler Center  
 Art Rew  
 Shorty's Locker  
 Donald H. Swanson\*

#### MAHS Donations

Adventure Caravans  
 Ron and Nola Freyer  
 Pat Hetland Family Foundation  
 Peggy Hofmeister  
 Maurice Jacques  
 Wilford and Jean Johnson  
 Lawrence "Pete" and Chris Jones  
 Methodist Hospital Alumnae  
 Mitchell Area Garden Club  
 Brenda Moore  
 Northwestern Energy  
 Thrivent Financial

#### Memorials

**Cecil Alt**  
 Higgins, Ed and Lynette

**Kenneth Baldwin, Sr.**  
 Kathryn C. Crockett

**Don Boyden**  
 Higgins, Ed and Lynette

**Joseph Claggett**  
 Deter, Charles

**Catherine Shrake**  
 Pattison, Jerry and Ruby

#### In Memoriam

Cecil Alt  
 Kenneth Baldwin, Sr.  
 Robert Bassett  
 Don Boyden  
 Florence Kimball Burau  
 Vera Kilstrom  
 Vivian Miller  
 Betty Roby  
 Gladys M. Scott  
 Reva Stedman  
 Jack Veldeer

#### 2014/2015 MAGS Members

\* = paid for 2015  
 Ackerman, John and Connie  
 Airhart, Jon  
 Angelucci, Stella  
 Baier, Joel and Sandra  
 Baird, Betty \*  
 Bamberg, Steve  
 Bartels, Keith and Glynn  
 Bauman, John  
 Bertsch, Marge  
 Blumer, Boyd and Evelyn  
 Bosma, AnnaMarie \*  
 Breer, Bob \*  
 Breidenbach, Philip  
 Brummett, Sherri  
 Buchholz, Dennis and Zelma  
 Buckley, Ryan and Stacy  
 Bunch, Harriet  
 Burau, Florence Kimball  
 Cap, Larry and Deb  
 Christensen, Marlyn and Corrine  
 Crockett, Kathryn  
 Davis, Earl  
 Deter, Charles - lifetime  
 Ellwein, James V.  
 Fuchs, Ronald  
 Goldammer, Richard and Pat  
 Gregg, Reva  
 Grohs, Roger Jr.  
 Handrahan, Becky

Hayen, Myrna  
 Hersey, Mick  
 Higgins, Lynette  
 Hohbach, Pat  
 Holm, Dale and Marla - Lifetime  
 Holmberg, Lori  
 Hunt, James C.  
 Jacques, Maurice \*  
 Johnson, Lisa  
 Johnson, Thomas and Nancy  
 Jones, Thomas  
 Juntunen, Roger  
 Kaus, Paul and Linda  
 Klingaman, Kleve and Tonya  
 Korzan, Gary and Jeanice  
 Kurtenbach, Deana  
 Loon, Rolland and Ella  
 Marcello, Richard and Lucinda  
 Mescall, Sally  
 Miller, Patricia \*  
 Miller, Vivian  
 Montgomery, Bill and Janese  
 Moore, Arlene  
 Nemmers, Dennis and Beth  
 Oster, Charles and Linda  
 Peters, Janice  
 Pooley, Mel and Karen  
 Powell, DeEtta  
 Ragle, Carol  
 Range, Pam  
 Rowley, Kris  
 Rozum, John and Tona  
 Rutan, Helen  
 Ryan, Sharon  
 Sattler, Dorothy  
 Schmucker, Bernie and Maxine  
 Scott, John and Debra  
 Sindt, Andrea \*  
 Strong, Helen  
 Stumm, Gaylord  
 Swanson, Don  
 Swenson, Lyle and Irene  
 Thomas, Delores  
 Thomsen, Gordon and Shirley  
 Thompson, Ronald C. and Susan  
 Tracy, Ione  
 Valberg, Marilyn  
 Walz, Beth - Lifetime  
 Weber, Bonnie \*  
 Weiland, Donna  
 Wieczorek, Jim  
 Wolf, Paul and Sheron  
 Wulf, Vern  
 Zard, Margaret A.

### Help “Fill in the Gaps” of the Mitchell Barbershop Harmony Chorus File

The Mitchell Barbershop Chorus, also known in its early years and at present as the Mitchell Barbershop Harmony Chorus, began in 1955 according to Mike Sejnoha, director in December 2009 when he was interviewed by a Daily Republic reporter.

MAHS has a file of clippings from The Daily Republic and some programs and posters about the chorus. Documents record the following events, but gaps need to be filled in. MAHS would appreciate the loan of any documents so that they can be photographed. If originals can be donated to MAHS, that will be helpful. Since it is assumed that there are annual concerts, quite a few years are missing which are the years not listed.

Concerts performed at Mitchell Senior High School included the following dates: 11-02-2014, 10-01-2011, 10-01-2009, 10-04-2003, 2-08-2002, 10-06-2001, 10-21-2000, 10-08-1999, 10-01-1994, 4-28-1989, 11-28-1987, 3-05-1983, 3-01-1980, 3-03-1979, 3-04-1978, 3-05-1977, 3-06-1976, 3-01-1975, and 2-24-1973.

Concerts were performed at the Corn Palace on 10-09-2010, 10-03-2009, 10-04-2008, 10-06-2007, and 10-01-2005.

Concerts were performed at Dakota Wesleyan University's Sherman Center on 12-04-2011 and 12-04-2004.

The Mitchell Junior High School auditorium was the performance site on Sunday, April 28, 1957.

Special programs were performed in 1956 for Mitchell's Diamond Jubilee and in Pierre at the Governor's Inaugural Ball on January 5, 1971.

“Christmas at the Carnegie” programs added to the Christmas spirit in December of 2014, 2013, 2012, 2011, 2010, 2009, and 2008.

“Singing Valentines” in February are documented for 2013, 2011, 1999, and 1983.

Do help MAHS “fill in the gaps” of the Barbershop collection. MAHS files are steadily being added to by volunteers.

### 2014 Corn Palace Festival Caramel Apples

The annual traditional Woolworth Caramel Apples project and food booth during the August 20 through 24 Corn Palace Festival netted \$10,369.70 which was divided equally between Mitchell Main Street & Beyond and the CRC. Volunteers from MAHS, MAGS, MMS&B, and friends worked in comfort at air-conditioned Einstein's made available by owners Dan Hauser and Brenda Oleson. Thanks are extended to all.

#### Program Schedules

MAHS and MAGS programs are held at 7:00 p.m. at the CRC, 119 West Third Avenue unless otherwise noted. Admission is free and all are welcome. MAHS programs are held on the third Monday and MAGS programs are held on the first Monday.

#### MAHS 2015 Programs

- Jan. 19** Cherie Ramsdell, Assistant Professor of Art, Department of Art, Dakota Wesleyan University, “Decoration of the Corn Palace” and her career in art.
- Feb. 16** Dean Strand (former grower) and Wade Strand (present grower) of colored corn, “Colored Corn for Corn Palace Decorations.”
- Mar. 16** Rolland Jurgens, senior project manager, Castenson Energy Co., “The Wind Energy Project at Tripp, S.D.” and Robert Tilton, chief engineer, Trail King Industries, Inc., “Transportation of Wind Energy Equipment.”
- Apr. 20** Dan DeFries, head of the Wind Turbine Technology Department, Mitchell Technical Institute, “MTI's Role in Wind Energy Training.”
- May 18** To be announced.
- June 15** Jean Patrick, author of Mount Rushmore, Past and Present, will speak about her recent book and other writings.

#### MAGS 2015 Programs

- Feb. 2** Tour the Archives room of the Mitchell Public Library. Meet in the Library at 7:00 p.m.
- Mar. 2** Deb Young, Davison County Register of Deeds, will discuss records available for research. Meet at the Courthouse at 7:00 p.m.

Other programs to be announced.

#### Table of Contents

- 1 Genealogy Corner
- Quakers in South Dakota, Pre-Statehood and After
- Save the Date, April 25, 2015
- 3 Lyle's Corner
- 4 Persons of Interest: Arthur C. Mellette
- The Mellette House
- 5 The Mellette House (continued)
- Lawrence O. “L.O.” Gale
- 6 Lawrence O. “L.O.” Gale (continued)
- William R. Ronald
- 7 William R. Ronald (continued)
- St. Nicholas
- 8 A Valued CRC Volunteer
- 9 A Valued CRC Volunteer (continued)
- MAHS 2014 Programs
- 10-11 MAHS and MAGS Members and Donors
- 12 Help “Fill in the Gaps” of the Mitchell Barbershop
- Harmony Chorus File
- Corn Palace Festival Caramel Apples
- MAHS 2015 Programs
- MAGS 2015 Programs

**The Carnegie Resource Center is open  
Monday through Saturday  
1:00 - 5:00 p.m.  
Call 605.996.3209 for additional times.**