

Approaches To Address Contamination At Recyclables Drop-Off Stations

John Foster, Agency Administrator
Dubuque Metropolitan Area
Solid Waste Agency

Program Back Ground

- Targeting residents without access to curbside collection
- 9 Stations in Dubuque County
- ~1,500 tons per year
- Contracted service
- Host locations

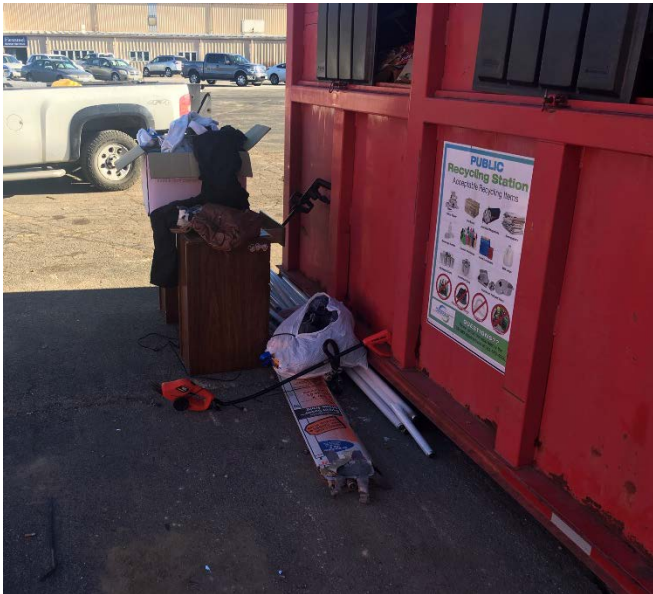


Recycables Station Issues

- Not staffed
- Not clear what is accepted
- No repercussions for contamination
- Unknown who is utilizing
- High program costs



Recycables Station Issues



Signage



PUBLIC
Recycling Station
Acceptable Recycling Items

 Office Paper	 Cardboard	 Junk Mail/Magazines	 Newspapers
 Beverage Bottles	 Cleaner Containers	 Food Containers	 Milk Jugs
 Tin/Metal Cans	 Aluminum Cans	 Aluminum Foil and Pans	
 Glass	 Plastic Bags/Garbage	 Styrofoam	 Hazardous


Dulles Metropolitan Area Solid Waste Agency

QUESTIONS??
Please contact the local Host or the
DMASWA Administrator at 563-589-4250.

Community Host Support

- Meetings to Discuss Issue with Host
 - Citizen Patrols
 - Newsletter
 - Suggestions
- Dumping Task Force
 - Expand City Service
 - Weekly cleanups
- Still unsure of users



Enforcement



Enforcement



ULTRAFIRE XS8



ULTRAFIRE XS8



Conclusion

- Community engagement
- Signage
- Clear Acceptance Criteria
- Accountability
- Still Work in Progress
 - Event Recycling Containers
 - Composting Operation

