

OFFICE SPACE FOR LEASE

Codesco Building - Next to Light Rail!



5290 E. Yale Circle | Denver, CO 80222

Office Overview

***Prime First Floor Office Space**

Building Size:	22,500 SF
Space Available:	4,013 (Available 7/1/19)
Rate:	\$23.00/RSF
Stories:	Two (2)
Elevators:	None
Parking:	11 parking spaces
Zoning:	S-MX-5

Building Features

- Clean open layout
- **Across the street from Yale Light Rail Station**
- Immediate access to I-25
- On-site management
- Hike/bike nearby Highline Canal

For more information, please contact:

John Fairbairn
T 303.226.4764
john@denverofficespace.com

2696 S. Colorado Blvd. | Suite 320 | Denver, CO 80222 | 303-765-4344

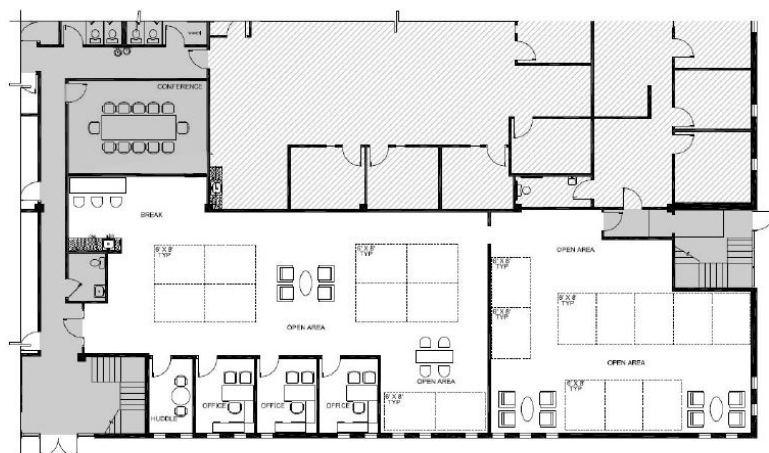
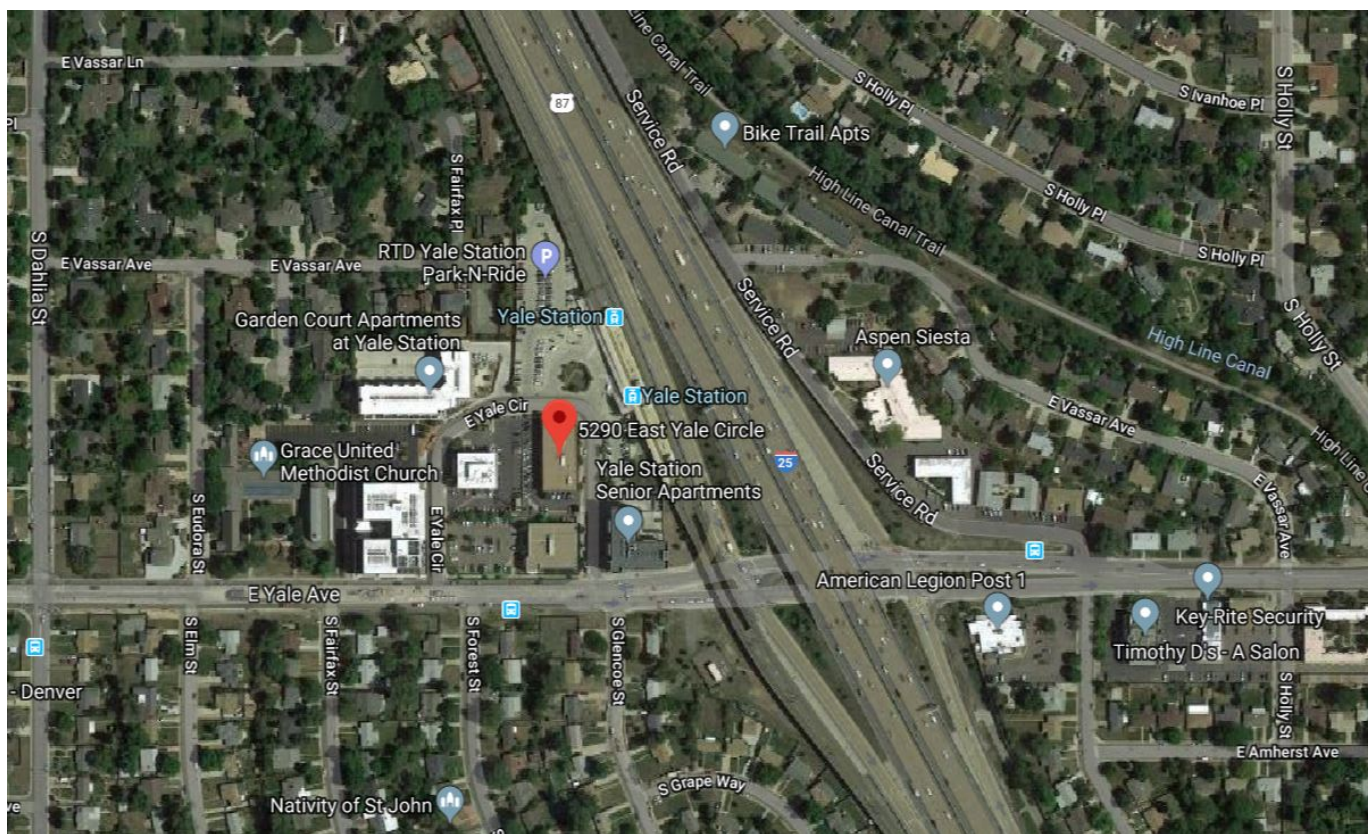


www.denverofficespace.com

The information above has been obtained from sources believed reliable. While we do not doubt its accuracy, we have not verified it and make no guarantee, warranty or representation about it. It is your responsibility to independently confirm its accuracy and completeness. Any projections, opinions, assumptions, or estimates are used for example only and do not represent the current or future performance of the property. The value of the transaction to you depends on tax and other factors which should be evaluated by your tax, financial and legal advisors. You and your advisors should conduct a careful, independent, investigation of the property to determine, to your satisfaction, the suitability of the property for your needs.

OFFICE SPACE FOR LEASE

Site Overview



For more information, please contact:

John Fairbairn
T 303.226.4764
john@denverofficespace.com

2696 S. Colorado Blvd. | Suite 320 | Denver, CO 80222 | 303-765-4344



www.denverofficespace.com

The information above has been obtained from sources believed reliable. While we do not doubt its accuracy, we have not verified it and make no guarantee, warranty or representation about it. It is your responsibility to independently confirm its accuracy and completeness. Any projections, opinions, assumptions, or estimates are used for example only and do not represent the current or future performance of the property. The value of the transaction to you depends on tax and other factors which should be evaluated by your tax, financial and legal advisors. You and your advisors should conduct a careful, independent, investigation of the property to determine, to your satisfaction, the suitability of the property for your needs.