

# Waste Reduction Program

Ashtland Department of Public Works  
20 Ponderosa Road  
Ashtland, MA 01721

PRSRST STD  
U.S. POSTAGE  
**PAID**  
Boston, MA  
Permit No.  
51544

ECRWSS

RESIDENT CUSTOMER  
ASHTLAND, MA

Rubbish & Recycling  
must be at your curb no  
later than 7am.

## Single Stream Recycling!!

No need to sort/separate  
bags open or stretched over  
trash barrel rim.

All rubbish bags  
must be tied. DO NOT leave  
bags open or stretched over  
trash barrel rim.

# PLEASE SAVE • 2016 - 2017 Recycling Information Inside



For More Information Contact David Miller at the DPW at

[dmiller@ashlandmass.com](mailto:dmiller@ashlandmass.com) (508) 881-0120 ext. 7943 [www.ashlandmass.com](http://www.ashlandmass.com)

Effective: 7/1/2016 through 6/30/2017

2016-17

# Ashtland Waste Reduction Program

## Recycling Update:

Due to recycling processing regulation changes, please DO NOT BAG your recycling. All recycling should be placed in your blue recycle bins or in barrels that are clearly marked "RECYCLING".

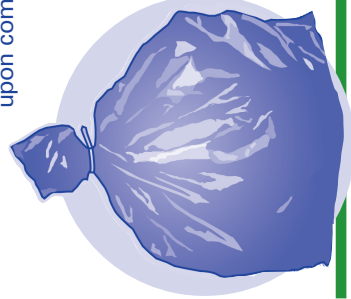


The more you recycle,  
the more \$ you save

### REMINDER

Ashtland runs a 4-day trash week. Tuesday through Friday, which means that the schedule never changes following a Monday holiday.

- Only "official" (orange) Town of Ashtland Bags will be picked up
- \$146 yearly base fee per household, \$78 for senior citizens, age 65 or over, upon completion and approval of abatement form.
- Costs controlled by homeowner...



Official Bags available in rolls of 5 in either 33 gal. size for \$9 per roll or 14 gal. size for \$5.25.

Official Town of Ashtland rubbish bags may be purchased at:

- Ashland Convenience Store
- Market Basket
- Shaw's Supermarket
- Rite Aid Pharmacy (Pond St., and Union St. locations)
- CVS Pharmacy (Union St. and Pond St.. locations)
- E-Z Convenience Store
- Main Street Wine & Spirits
- Lucky Farms

Please call DPW for complete and updated list of stores.

2016 Effective: 7/1/2016 through 6/30/2017

# 2017 Ashland Recycling Information

FOR ALL RESIDENTS WITH MUNICIPAL TRASH COLLECTION

## SINGLE STREAM\* CURBSIDE RECYCLING

*\*There is no longer a need to keep paper and containers separated.*

Please rinse containers and place the following items in your blue recycling bins or a barrel, clearly marked "Recycling".

### Paper + Containers PLACE TOGETHER IN BIN

- ◆ Newspaper/inserts
  - ◆ Magazines/catalogs, brown paper bags
  - ◆ Hard cover books, *remove covers*
  - ◆ Phone books, office paper, paperbacks
  - ◆ Junk mail, fax paper, envelopes
  - ◆ Paperboard, *cereal, cracker boxes*
  - ◆ Corrugated cardboard, *flatten, 3' x 3' max.*
  - ◆ Pizza boxes *unsoiled*, egg cartons
  - ◆ Milk and juice cartons
- No wax paper, paper towels, napkins, tissues*

- ◆ Glass bottles/jars, all colors and sizes
  - ◆ Aluminum, beverage cans, tin/steel cans and lids
  - ◆ Aluminum foil, pie plates / trays
  - ◆ Aseptic juice boxes
  - ◆ All plastic marked
- 
- No motor oil or chemical containers*

No broken or other glass such as light bulbs, window or auto glass, dishes, glasses, Pyrex  
No paint or aerosol cans or other metal items. No shrink wrap, motor oil, or chemical containers or plastic toys, furniture or unmarked plastic.

## Bulky Item Pickup

Each household is entitled to 1 Bulky Item Pickup per month.

Call Waste Management at **800-972-4545** to schedule your monthly bulky item pickup



- ◆ Refrigerators – remove doors ◆ ovens ◆ dishwashers bikes ◆ grills
  - ◆ water heaters ◆ couches ◆ chairs ◆ mattresses
- No propane tanks, construction or demolition debris

## 2016-2017 Collection Calendar

### RECYCLING COLLECTION SCHEDULE

*Recycling is collected every week on your regular trash collection day.*

#### HOLIDAY SCHEDULE

*Whenever a scheduled collection day falls on an observed holiday, that day's collection and all remaining collections for the week will be delayed one day. Friday's collection will be on Saturday. Holidays that fall on Mondays will not affect the pickup schedule.*

#### RECYCLING BINS

*Town of Ashland recycle bins are \$5.00 each and are available to all subscribers of the town's curbside rubbish and recycle removal program. Recycle bins may be picked up at the DPW office Monday thru Friday, 8:00am-4:00pm.*

*Observed Holiday:*

Thanksgiving: Thursday, Nov 24, 2016

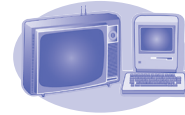
## Drop-Off Recycling

Bring the following materials to the Ashland DPW Yard, 20 Ponderosa Rd. See dates & hours for specific items shown below.

### Oil, Mercury & Oil-based Paint\*

\*Latex paint will not be accepted. Please contact the DPW for latex paint disposal instructions

Waste motor oil, *no mixes*. Thermometer, thermostats, button and ni-cad batteries, fluorescent tubes, & compact fluorescent light bulbs collected 1st Sat. of each month, 9AM - 12 Noon



### Electronics

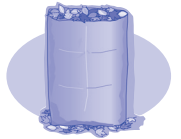
TV's, PC's, monitors, A/C units, refrigerators, etc. Collected on 1st Sat. of Apr., June, Aug. & Oct. at the DPW Yard from 9am-12noon

Nominal fees to cover disposal costs will be assessed at collection

## Scheduled Collections

### Yard Waste

Leaves, grass only  
*No plastic bags, trash, stumps, or brush*



Collection dates:

*Mondays: Oct. 10-Nov. 21, 2016*

*Mondays: April 3-May 22, 2017*

*(with the exception of Marathon Monday, April 17, 2017)*

### Christmas Trees

Collected:

**Mondays, Jan. 2 & 9, 2017**

Remove all decorations.

Do not bag or tie. Leave loose.



## Special Collections



### Ashland's Annual Household Hazardous Waste Collection Day

**Saturday, May 13, 2017, 9am-1pm**

Open to Ashland residents ONLY

- ◆ Oil paint, stains, thinners, cleaning solvents, varnishes, adhesives, rubber cement, resins, glues
- ◆ Pesticides, fertilizer, poisons, mercury
- ◆ Kerosene, antifreeze, brake fluid, car batteries
- ◆ Chemistry sets, art supplies, asbestos, button and rechargeable batteries

For More Information Call 508-881-0120, ext. 7943