

Y:\shared\Helena Projects\1-18132-Lewis and Clark Co Road On-Call\T08 - Treasure State Drainage Assessment\CADD 1-18132-T08\Exhibits\1-18132-T08-Survey Exhibit 11x17.dwg

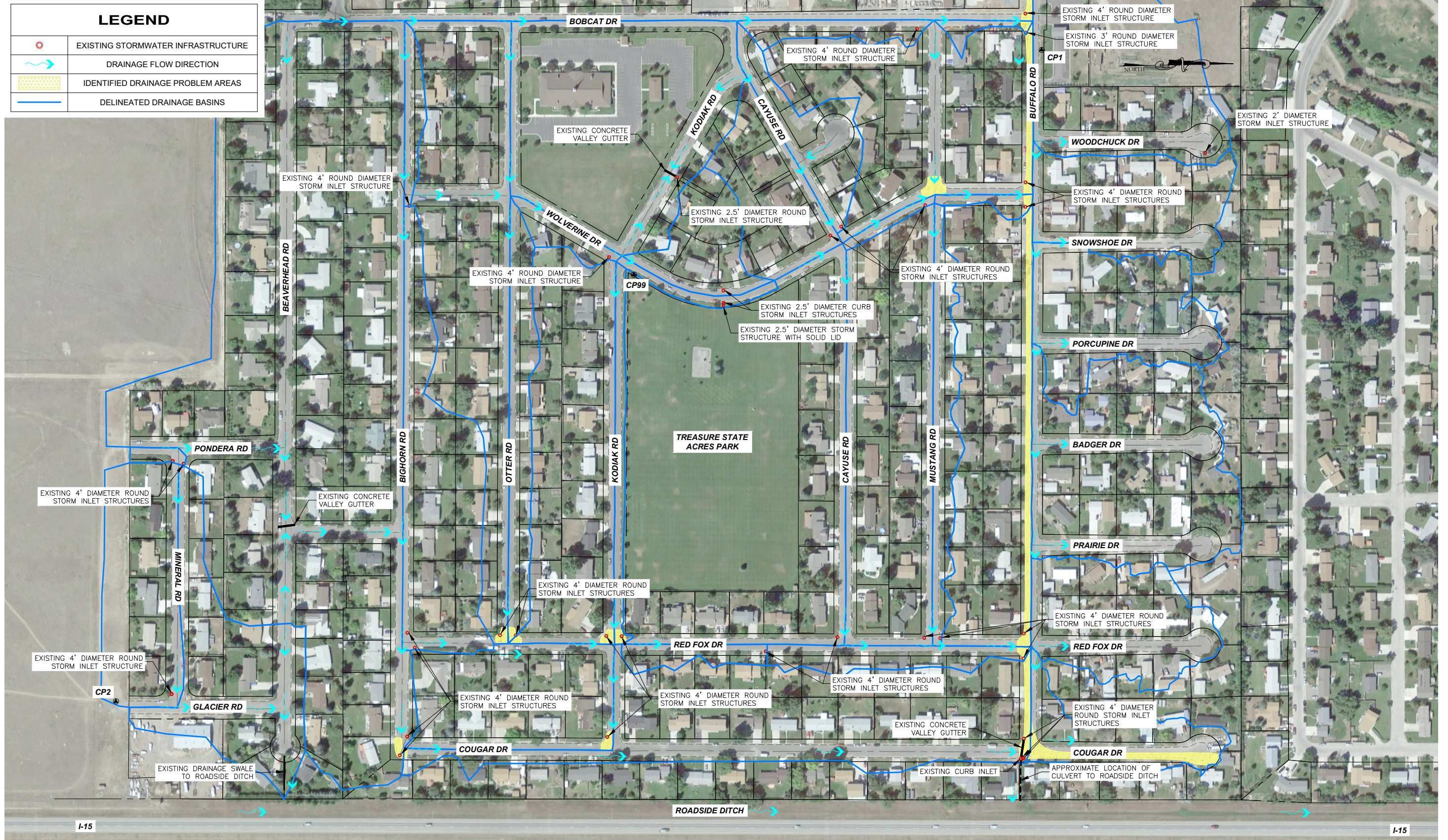






Figure 1
Treasure State Acres
Survey & Drainage Exhibit
 LEWIS AND CLARK COUNTY
 TREASURE STATE ACRES DRAINAGE ASSESSMENT



Y:\shared\Helena Projects\1-18132-Lewis and Clark Co Road On-Call\T08 - Treasure State Drainage Assessment\CADD\1-18132-T08-Preliminary Proposed Exhibit 11x17.dwg

LEGEND	
	EXISTING STORMWATER INFRASTRUCTURE
	DRAINAGE FLOW DIRECTION
	DELINEATED DRAINAGE BASINS
	PROPOSED STORMTECH MC-3500 CHAMBERS

- NOTES:**
1. PLACEMENT OF PROPOSED UNDERGROUND STORM CHAMBERS IS PRELIMINARY AND SUBJECT TO CHANGE.
 2. OVERALL FOOTPRINT SHOWS WIDTH OF CHAMBER PLUS ADDITIONAL DRAIN ROCK SURROUNDING STRUCTURES FOR ADDITIONAL CAPACITY, APPROXIMATELY 8.42 FEET TOTAL WIDTH.
 3. PROPOSED STRUCTURES WERE SIZED TO RETAIN THE ENTIRE VOLUME OF THE 2-YEAR, 24-HOUR STORM. THE RATIONAL METHOD WAS USED TO DETERMINE RUNOFF VOLUMES FOR EACH DELINEATED DRAINAGE BASIN.
 4. PRELIMINARY PLACEMENT OF STORM INFILTRATION CHAMBERS IS INTENDED TO TARGET AND ALLEVIATE FLOODING AND PONDING AT PREVIOUSLY IDENTIFIED PROBLEM AREAS. PLACEMENT WAS DETERMINED SUCH THAT EXISTING STORM STRUCTURES IN PROBLEM AREAS COULD BE RETAINED AND ATTACHED TO THE NEW CHAMBERS FOR ADDITIONAL STORAGE AND INFILTRATION CAPACITY.

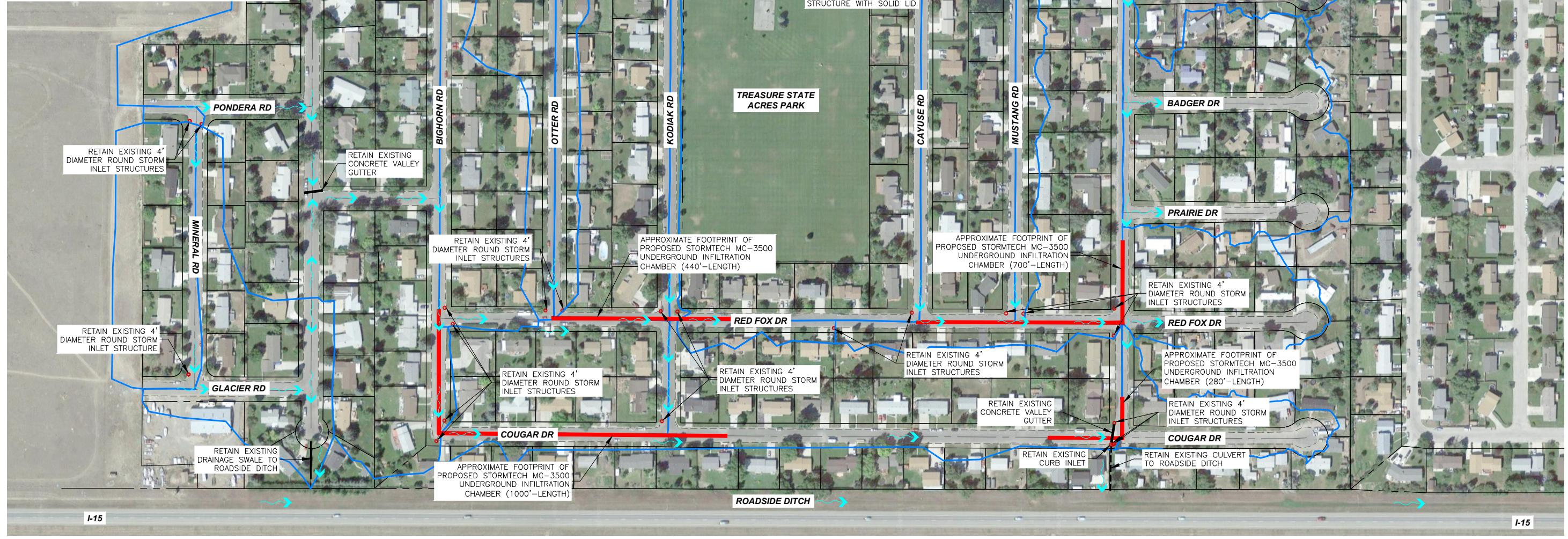
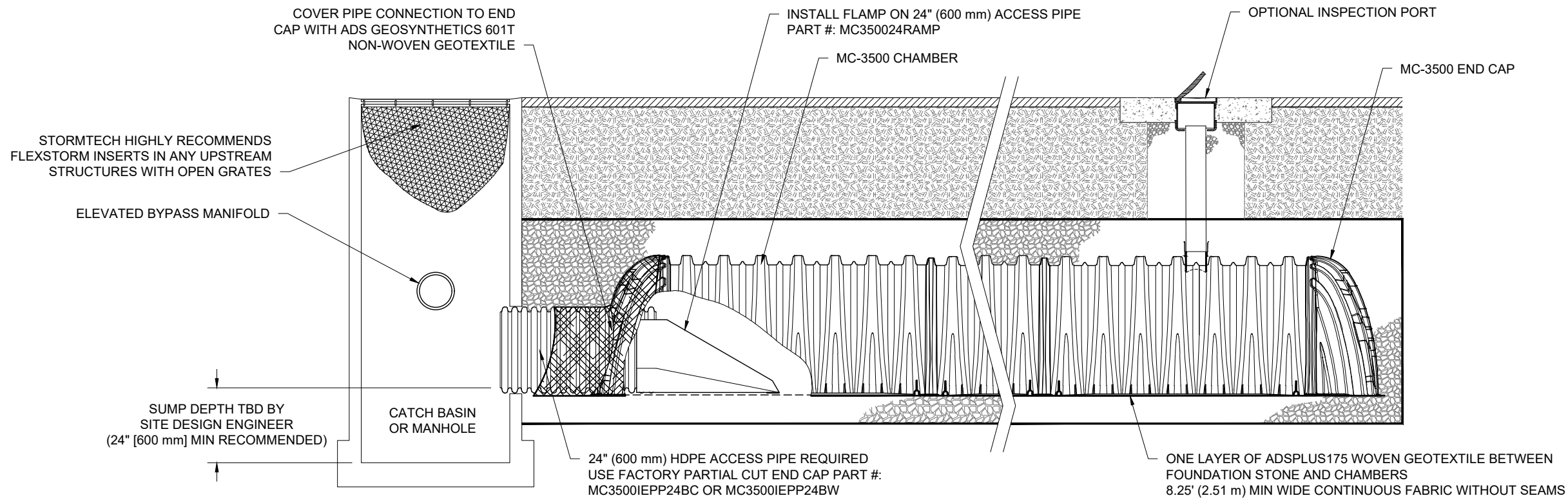


Figure 2
Treasure State Acres
Proposed Drainage Improvements
 LEWIS AND CLARK COUNTY
 TREASURE STATE ACRES DRAINAGE ASSESSMENT





MC-3500 ISOLATOR ROW PLUS DETAIL

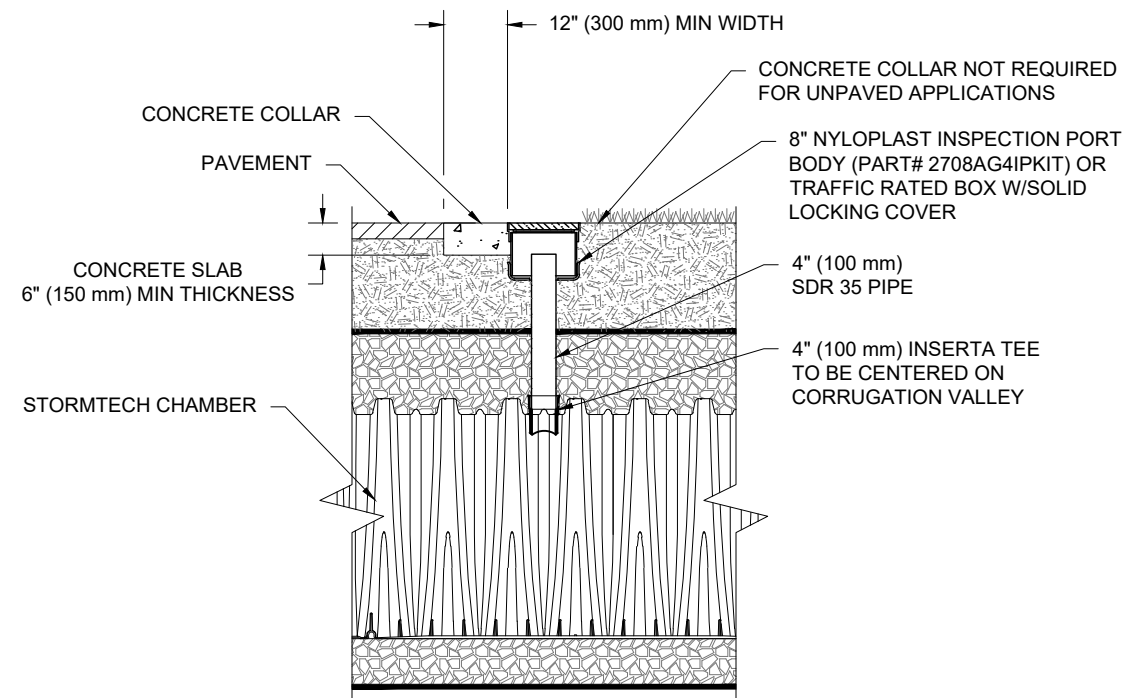
NTS

INSPECTION & MAINTENANCE

- STEP 1) INSPECT ISOLATOR ROW PLUS FOR SEDIMENT
- A. INSPECTION PORTS (IF PRESENT)
 - A.1. REMOVE/OPEN LID ON NYLOPLAST INLINE DRAIN
 - A.2. REMOVE AND CLEAN FLEXSTORM FILTER IF INSTALLED
 - A.3. USING A FLASHLIGHT AND STADIA ROD, MEASURE DEPTH OF SEDIMENT AND RECORD ON MAINTENANCE LOG
 - A.4. LOWER A CAMERA INTO ISOLATOR ROW PLUS FOR VISUAL INSPECTION OF SEDIMENT LEVELS (OPTIONAL)
 - A.5. IF SEDIMENT IS AT, OR ABOVE, 3" (80 mm) PROCEED TO STEP 2. IF NOT, PROCEED TO STEP 3.
 - B. ALL ISOLATOR PLUS ROWS
 - B.1. REMOVE COVER FROM STRUCTURE AT UPSTREAM END OF ISOLATOR ROW PLUS
 - B.2. USING A FLASHLIGHT, INSPECT DOWN THE ISOLATOR ROW PLUS THROUGH OUTLET PIPE
 - i) MIRRORS ON POLES OR CAMERAS MAY BE USED TO AVOID A CONFINED SPACE ENTRY
 - ii) FOLLOW OSHA REGULATIONS FOR CONFINED SPACE ENTRY IF ENTERING MANHOLE
 - B.3. IF SEDIMENT IS AT, OR ABOVE, 3" (80 mm) PROCEED TO STEP 2. IF NOT, PROCEED TO STEP 3.
- STEP 2) CLEAN OUT ISOLATOR ROW PLUS USING THE JETVAC PROCESS
- A. A FIXED CULVERT CLEANING NOZZLE WITH REAR FACING SPREAD OF 45" (1.1 m) OR MORE IS PREFERRED
 - B. APPLY MULTIPLE PASSES OF JETVAC UNTIL BACKFLUSH WATER IS CLEAN
 - C. VACUUM STRUCTURE SUMP AS REQUIRED
- STEP 3) REPLACE ALL COVERS, GRATES, FILTERS, AND LIDS; RECORD OBSERVATIONS AND ACTIONS.
- STEP 4) INSPECT AND CLEAN BASINS AND MANHOLES UPSTREAM OF THE STORMTECH SYSTEM.

NOTES

1. INSPECT EVERY 6 MONTHS DURING THE FIRST YEAR OF OPERATION. ADJUST THE INSPECTION INTERVAL BASED ON PREVIOUS OBSERVATIONS OF SEDIMENT ACCUMULATION AND HIGH WATER ELEVATIONS.
2. CONDUCT JETTING AND VACTORING ANNUALLY OR WHEN INSPECTION SHOWS THAT MAINTENANCE IS NECESSARY.



NOTE:
INSPECTION PORTS MAY BE CONNECTED THROUGH ANY CHAMBER CORRUGATION VALLEY.

**4" PVC INSPECTION PORT DETAIL
(MC SERIES CHAMBER)**

NTS

MC-3500

ISOLATOR ROW PLUS DETAILS

DATE:	8/03/22	DRAWN:	KLJ
PROJECT #:		CHECKED:	KLJ

DATE	DRWN	CHKD	DESCRIPTION

StormTech®
Chamber System

888-892-2694 | WWW.STORMTECH.COM

4640 TRUEJMAN BLVD
HILLIARD, OH 43026



THIS DRAWING HAS BEEN PREPARED BASED ON INFORMATION PROVIDED TO ADS UNDER THE DIRECTION OF THE SITE DESIGN ENGINEER OR OTHER PROJECT REPRESENTATIVE. THE SITE DESIGN ENGINEER SHALL REVIEW THIS DRAWING PRIOR TO CONSTRUCTION. IT IS THE ULTIMATE RESPONSIBILITY OF THE SITE DESIGN ENGINEER TO ENSURE THAT THE PRODUCT(S) DEPICTED AND ALL ASSOCIATED DETAILS MEET ALL APPLICABLE LAWS, REGULATIONS, AND PROJECT REQUIREMENTS.

Isolator[®] Row Plus

O&M Manual

