

# Wildfire Preparedness & Evacuation Planning

Jester Estates and Lakewood Neighborhood  
April 1, 2026



## **Mitigation and Prevention**

- What you can do
- What the City is doing

## **Communication Resources**

- What you can do
- What the City is doing

## **City of Austin Working Together**

- Public Safety Roles during a incident.

## **Sheltering and Recovery**

- Short-Term Resources
- Long-Term Recovery

## **Evacuation Scenario**

- Jester Estates/Lakewood area scenario

# **Agenda**

---

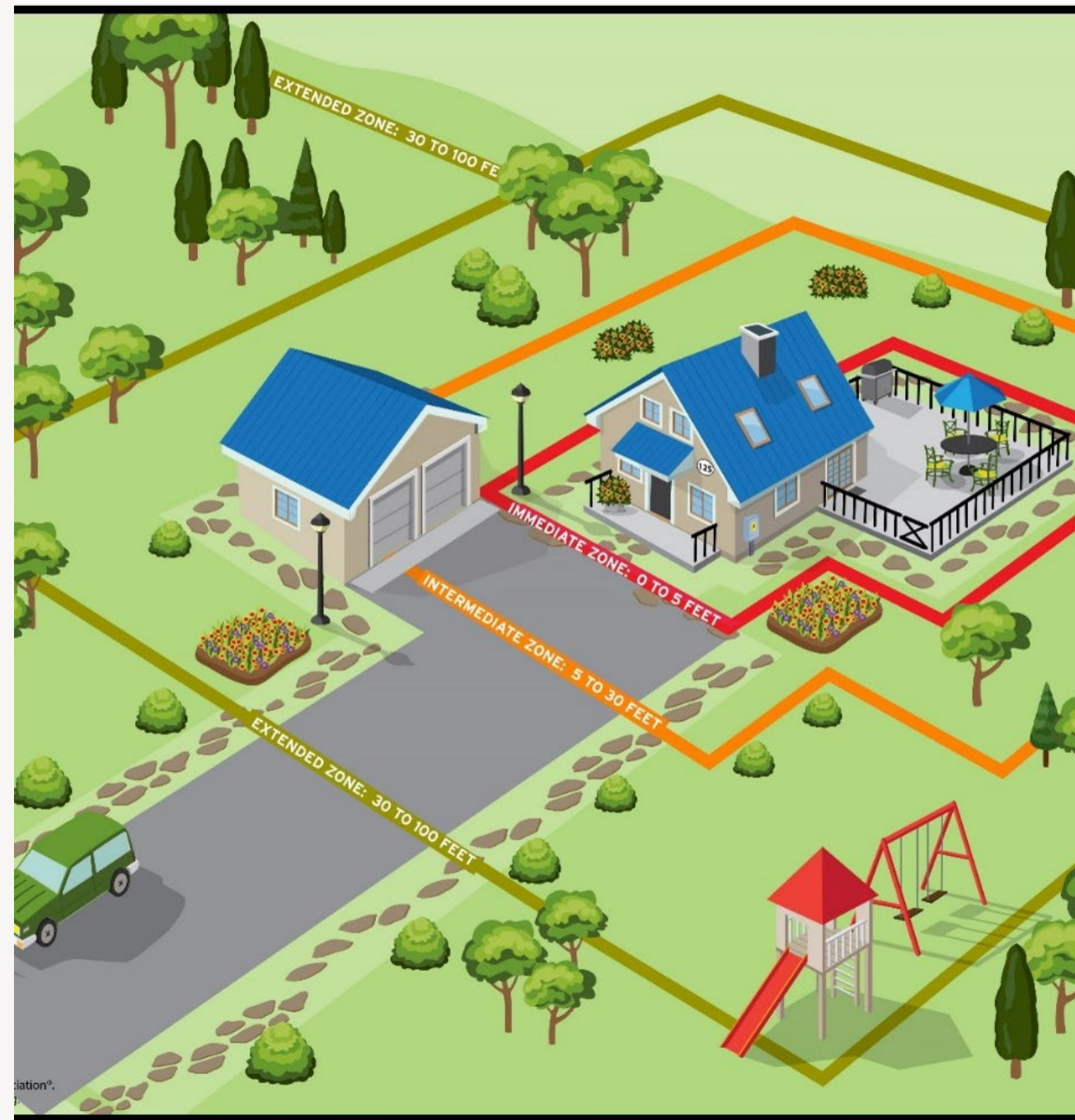
# Mitigation and Prevention

# Structure Ignition Zone Evaluation (SIZE)



# Structure Ignition Zone

1. Immediate Zone 😱
  - 0-5 feet from home
2. Intermediate Zone 😞
  - 5-30 feet from home
3. Extended Zone 😊
  - 30-100 feet from home or to the property line



# To schedule a **SIZE** for your home

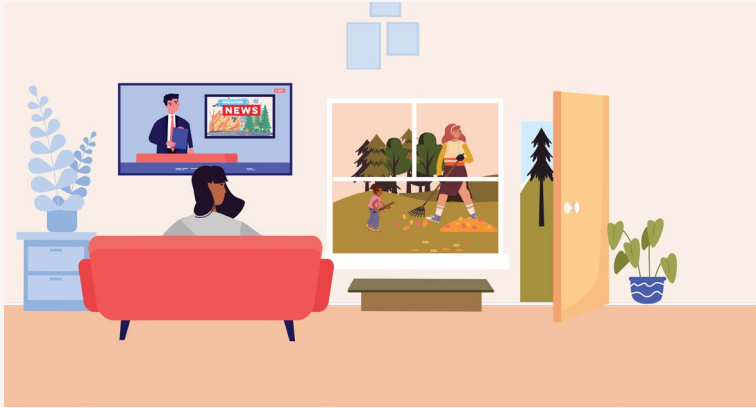


- Call 311 or use 311 app
- Email [firewildfire@austintexas.gov](mailto:firewildfire@austintexas.gov)
- Fill out request through QR code
- Visit Austin Fire's Wildfire HUB [ATXwildfirehub.com](https://www.austintexas.gov/ATXwildfirehub.com)



1. *Hover phone camera over QR code*
2. *Click yellow link that pops up*

# Protective Action Strategy: Ready, Set, Go!



## Ready

- Create a plan for people and pets & review with your family
- Harden your home against embers
- Request a SIZE from the Wildfire Division



## Set

- Stay aware by signing up for alerts, monitoring fire conditions/NFDRS, getting ready to evacuate if needed
- Review your plan and prepare your family



## Go!

- Grab your go-kit, account for every person & pet, and leave!
- If you need extra time to evacuate, consider leaving during "Set" phase

# Protective Action Strategy: Ready, Set, Go!



# Mitigation and Prevention: What the City is Doing



## Protective Action Strategy: SFACTS is a public safety decision making strategy

- Protective decisions guided by SFACTS:
  - Survivability (Can people survive here)
  - Forecast (Fire/ Flood/ Haz Mat)
  - Access (Is the evacuation route suitable)
  - Construction (Is the structure suitable for sheltering)
  - Time (How much time do you have before impact)
  - Stay/Go (Shelter in Place or Evacuate)
- Decisions based on real-time field data & interagency coordination
- Protective actions include:
  - Shelter-in-place
  - Evacuation Warning
  - Evacuation Order
- Only Mayor, County Judge, or Governor may issue official evacuation orders

# Mitigation and Prevention: New Plans

## All-Hazards Protective Action Plan

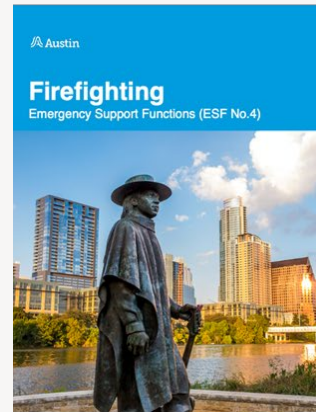
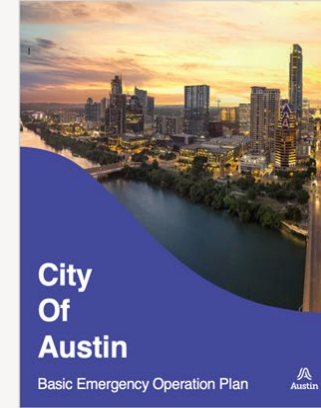
- Outlines Austin's strategy for managing any type of protective action during
  - Floods
  - Wildfires
  - All hazards

## Wildfire Annex

- Explains specific fire evacuation protocols for COA

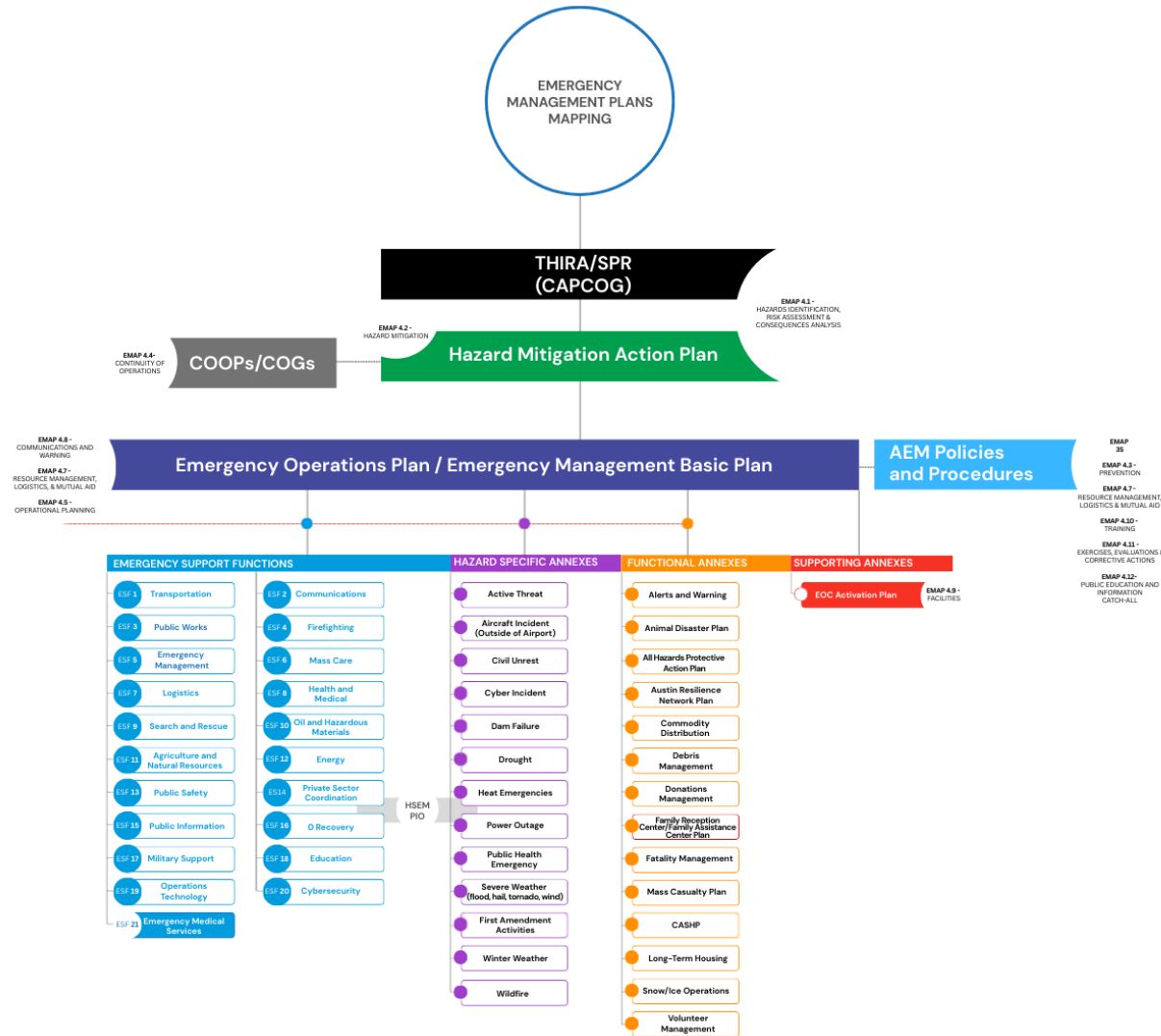
## Firefighting: Emergency Support Function (ESF) No. 4

- State of Texas Requirement
- Explains who is responsible for what during a fire event



# Mitigation and Prevention: New Plans

These plans fit into a larger system of the Emergency Operations Plan



# Hazard Mitigation Plan

- Update plan every 5 years
- Designed to assist in mitigating risk for all threats and hazards to the City
- Plan helps to minimize or eliminate long-term risk to human life and property
- FEMA-approved hazard mitigation plan is required for multiple grant programs
  - Grants would assist in paying for projects associated with mitigation
- Public input is valuable to this process
  - First public meeting June 10
  - Next meeting April 16th, Yarborough Library Branch, 3:00-5:00 PM
  - Digital Input Survey at <https://tinyurl.com/AustinHMAP>



# Community Wildfire Protective Action Plan Public Input Opportunities



- Regional Plan updated every 10 years
- Designed to assist in mitigating wildfire risk
- In Person public meeting scheduled- <https://publicinput.com/cwpprsvp>
  - East Location- Early College Cafeteria  
April 8, 2026, 6:00PM-8:00 PM
  - West Location- St. Luke's on the Lake Episcopal Church  
April 9, 2026, 6:00PM-8:00 PM

CWPP Survey





# Communication & Resources

# Emergency Preparedness Resources: What You Can Do



Emergency preparedness training or presentation for your neighborhood, business, organization or team at [ReadyCentralTexas.org](https://ReadyCentralTexas.org)



# Emergency Preparedness Resources: What You Can Do



## Emergency Preparedness Pop-Ups

- 3rd Wednesday of the month
- First 25 receive emergency supply starter kit
- Public Safety departments distribute information, supplies & resources
- Free to attend

## Ready Together: Emergency Preparedness Training for You, Family & Neighborhood

- Quarterly emergency preparedness classroom training
- Free to attend
- Register in advance online / receive a preparedness kit

## Get Ready Central Texas Emergency Preparedness Fair

- Annual event
- Free to attend / receive a preparedness kit
- Over 30 emergency preparedness partners local, state, federal

## 4 Steps to Emergency Preparedness

- By request for neighborhoods, businesses, associations
- Available in 14 languages

# Emergency Preparedness Resources: Guides & Websites

## Neighborhood Preparedness Guide

- Available in English, Spanish, Vietnamese, Simplified Chinese, Korean, Arabic
- Plan for hazards: wildfire, floods, winter storms, etc.
- Build an emergency kit
- Create a family emergency plan
- Templates for neighborhood emergency planning

## Ready, Set, Go! Wildfire Action Guide

- English & Spanish

## ReadyCentralTexas.org

- Digital preparedness hub

## ATXWildfireHub.com

- Redesigned home for wildfire info



***Request emergency preparedness training or presentation for neighborhood, business, organization or team at [ReadyCentralTexas.org](https://www.readycentraltexas.org)***

# Emergency Preparedness Resources: WARN CENTRAL TEXAS AND IPAWS



The Capital Area Council of Governments uses a regional notification system (RNS) called Everbridge as a crucial public-safety tool. The web-based tool is available to users throughout the CAPCOG region to alert the public to emergency and non-emergency situations. It's an effective tool for notifying a relatively large number of people in a short period of time.



IPAWS is FEMA's national system for local alerting that provides authenticated emergency and life-saving information to the public through WEA, EAS and NOAA Weather Radio.

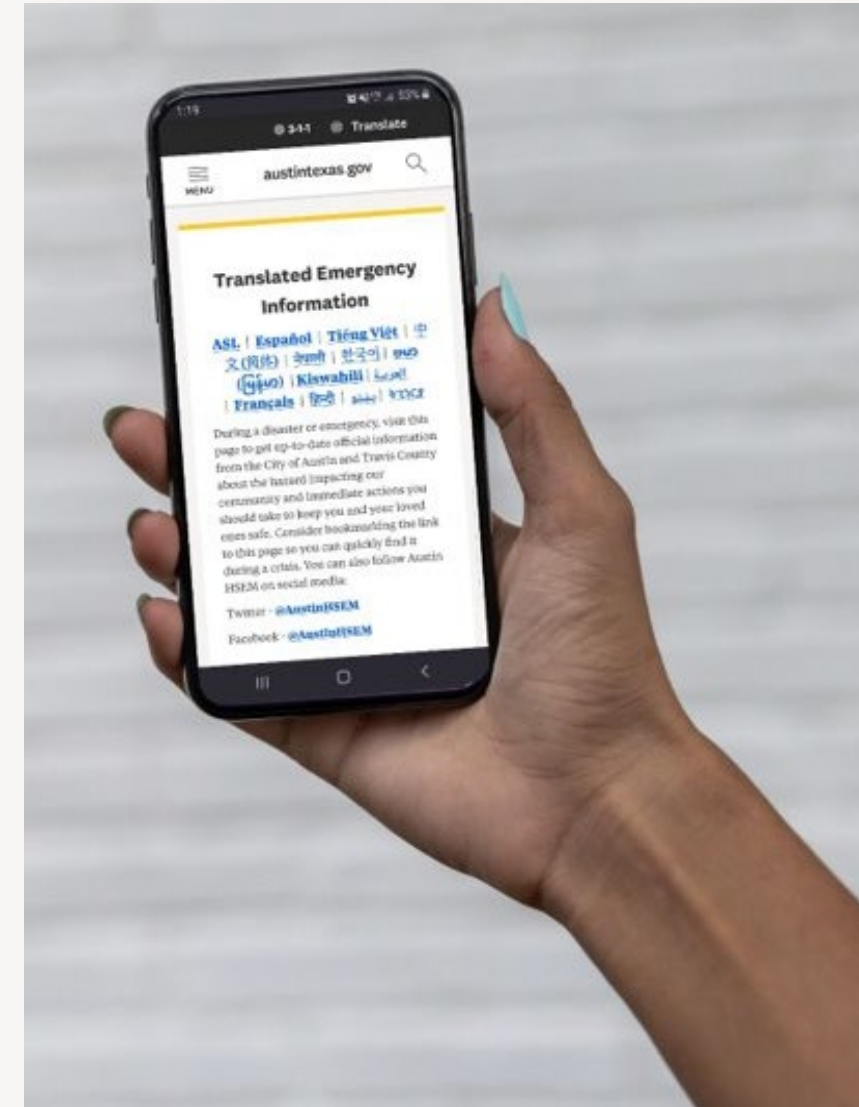
# Communication Resources: What the City is doing

## City Alerts Webpage: [AustinTexas.gov/alerts](https://austintexas.gov/alerts)

- Official hub for up-to-date information in 14 languages
- Provide updates on hazard impacting community, and actions you should take.
- Bookmark this page so you can easily find it when you need it.

## Other Communication Methods

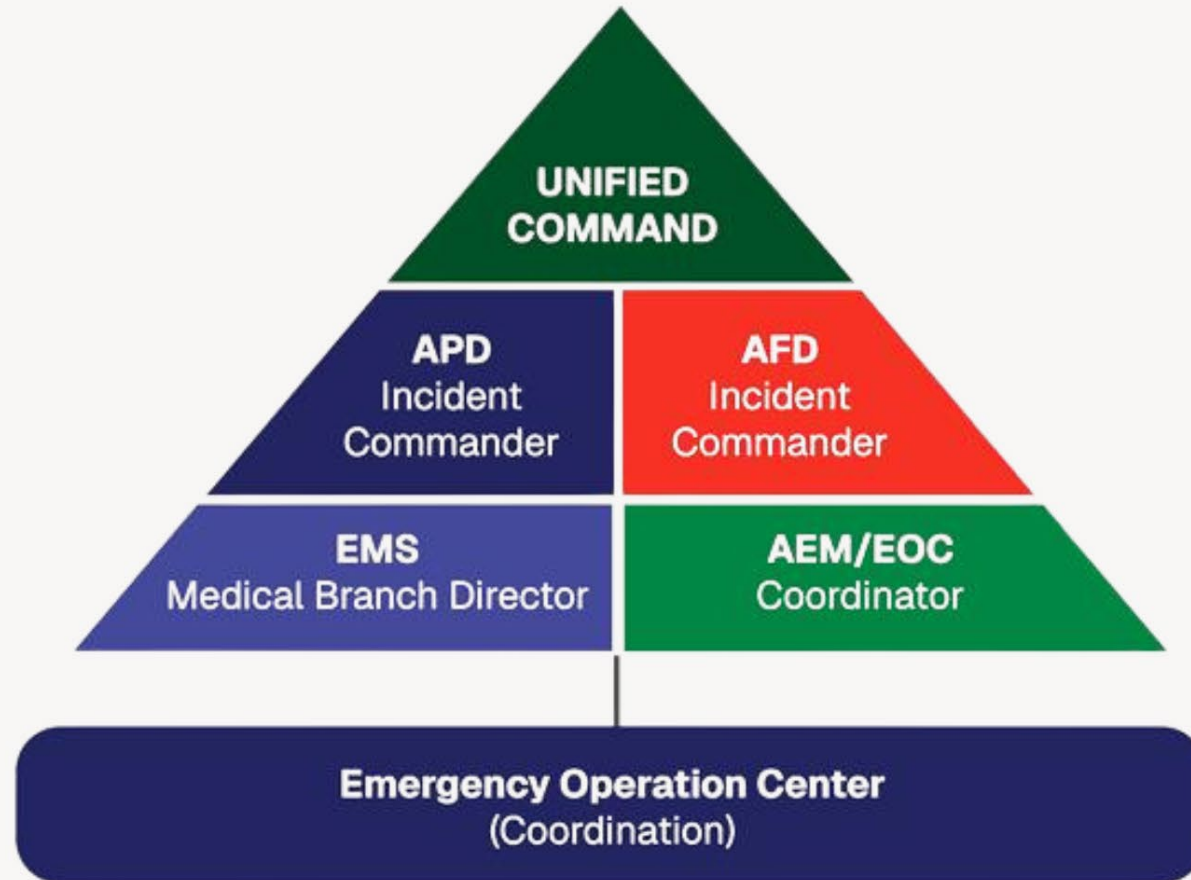
- Ready Central Texas Phone Application
- Social Media: FB, IG, X
- Press Conferences
- Local News
- Outreach and Engagement Events



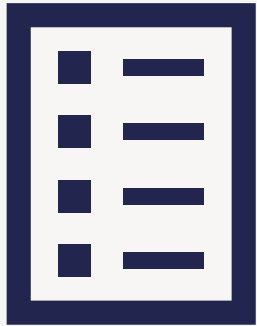
# **City of Austin Working Together**

**Examples of how we work together:  
Each incident can be different**

# Communication Resources: What the City is doing



# Community Education & Preparation



All agencies working on community outreach to educate residents about evacuation plans.



Focused on building neighborhood networks & understanding local vulnerabilities

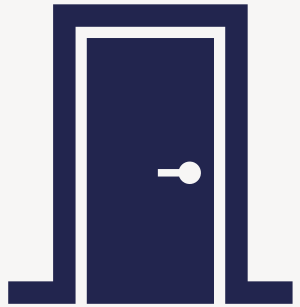


Educating public on evacuation zones, TAP locations & shelter operations



Outreach via meetings, media & digital platforms

# What does AFD do on-scene?



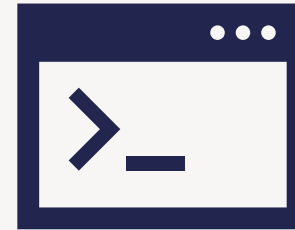
Door-to-door notice & loudspeaker announcements about evacuation



Assist individuals with evacuation if needed



Search & mark homes search for survivors



Update digital system to account for each home

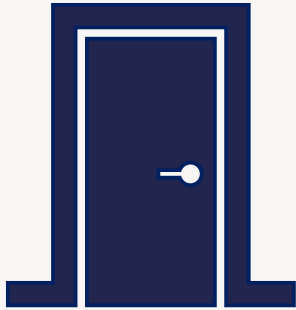


IDs locations needing different protective measures, i.e. schools

# What does APD do on-scene?



Route management and Traffic control



Door-to-door evacuation notice



Perimeter security / Access control



Assist with relocation back into neighborhood

# What does Austin-Travis County EMS do on-scene?



Treatment of any patients with emergent needs (community or 1st Responders)



Communication with Community, Command Post, TAP's, & EOC



Assistance with evacuees with functional & access needs

# What does Austin-Travis County EMS do at TAP?



Check in evacuees to ensure all household members are accounted for



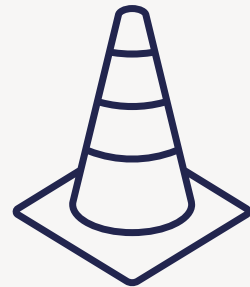
Triage survivors, provide minor medical treatment, transport to hospital if needed



Direct survivors to resources at TAP if needed



Connect survivors with transportation to shelters



Direct survivors leaving TAP to follow traffic instructions



# Sheltering and Recovery

# TEMPORARY ASSEMBLY POINTS

- Provides:
  - Registration/log of evacuees on the way to safety
  - Safe **TEMPORARY** staging of evacuees before transit to shelters
- Identified/managed by Austin-Travis County EMS and Red Cross
- Uses QR code to gather contact info of evacuees & status of household + provides basic services (e.g. - emergent medical care)
- Important for assisting those without transportation or safe place to go or with access & functional needs
- Easy identifiable location that residents *should* be able to navigate to with minimal direction.



# Evacuations for People with Access & Functional Needs + Animal Services

Evacuation procedures include care for individuals with disabilities, seniors & non-English speakers.

Coordination with hospitals, nursing homes & schools

Plans for sheltering pets & livestock; animal transport logistics included

Animal support managed through Austin Animal Services & Travis County.

# Local Recovery and How it Works

## Repopulation and Damage Assessments



A Site Assessment Task Force will be established. This Task Force will conduct field assessments, identify hazards, support response and recovery in affected areas, and make recommendations for repopulation.

- Austin Fire
- Austin Police
- Austin Public Health
- Austin Transportation and Public Works
- Austin Developmental Services
- Austin Resource Recovery
- Austin Water
- Austin Energy
- Austin Watershed Protection
- CapMetro

# You have been evacuated, now what?


## Short-Term Shelter

- Temporary Assembly Point - TAP
  - Check in for your household via QR code
  - Helps City account for impacted community members
  - Receive quick services
  - Proceed to shelter or other housing
- Short-Term Shelter Services
  - First resource will be a City facility, managed by City-staff and American Red Cross
  - Basic needs and services provided
  - Shelter facility will depend on volume of need and location
  - Additional resources or shelter options will be evaluated

### Make a Basic Emergency Supply Kit

English

- Basic first aid kit, seven-day supply of medications/medical items
- Map(s) of the area
- Extra cash (suggested: \$200 in small bills)
- Spare change of clothes
- Spare car/home key
- Family and emergency contact info (phone and email)
- Pet supplies (collar, leash, tags, food, bowl)
- Copies of personal documents in water-tight bag
- 1 gallon of water per person, per day (7-day supply)
- 7-day supply of non-perishable food, can opener
- Battery-powered or hand-crank radio (NOAA Weather Radio, if possible)
- Cell phone, charger(s), flashlight, extra batteries
- Sanitation, personal hygiene items, blankets
- Wrench or plyer
- Other tools or equipment you may need



**Get Ready Central Texas** For more information: [readycentraltexas.org](http://readycentraltexas.org)

# Local Recovery and How it Works

## Multi Agency Resource Centers (MARC)s

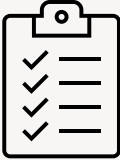


*Centralized support for individuals, families, and communities after a disaster*

- One-stop shop for disaster assistance
- Quick access to resources, minimize travel
- Coordinate agencies to maximize support
- Transition to long-term recovery



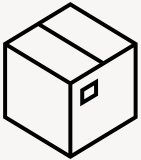
Housing Assistance



Casework guidance & referrals



Emotional & mental health support



Bulk Supplies Distribution



Access to local and state resources

# Short & Long-Term Recovery Resources

Emergency Management is Coordinated at the Federal, State, and Local Levels



## Federal

FEMA's mission is helping people before, during and after disasters, and their core values and goals help them achieve it.

---



## State

TDEM carries out a comprehensive all-hazard emergency management program for the State and for assisting cities, counties, and state agencies in their emergency management programs.

---



## Local

AEM serves as the coordinating focal point for preparedness, response, recovery, and education in any emergency or disaster that disrupts the community.

# Federal Recovery and How it Works



## FEMA Recovery Resources

- **Public Assistance:** supplemental grants for debris removal, emergency protective measures, and the restoration of disaster-damaged infrastructure **for government**
- **Individual & Household Assistance:** financial assistance and direct services to eligible individuals and households affected by a disaster, who have **uninsured or underinsured** necessary expenses and serious needs **for residents**
- **Business & Individual Assistance:** provides **low-interest disaster loans** for businesses and residents

## Damage Assessments and Thresholds

- The threshold for the State of Texas to qualify for Public Assistance is \$53.6 million in uninsured, qualifying disaster damages.
- The threshold for Travis County to qualify for Public Assistance is \$5.7 million in damages reported.
- These thresholds are based on the annual consumer price index and the last official census population.
- Jurisdictions are reimbursed a percentage, or portion, of total eligible costs.

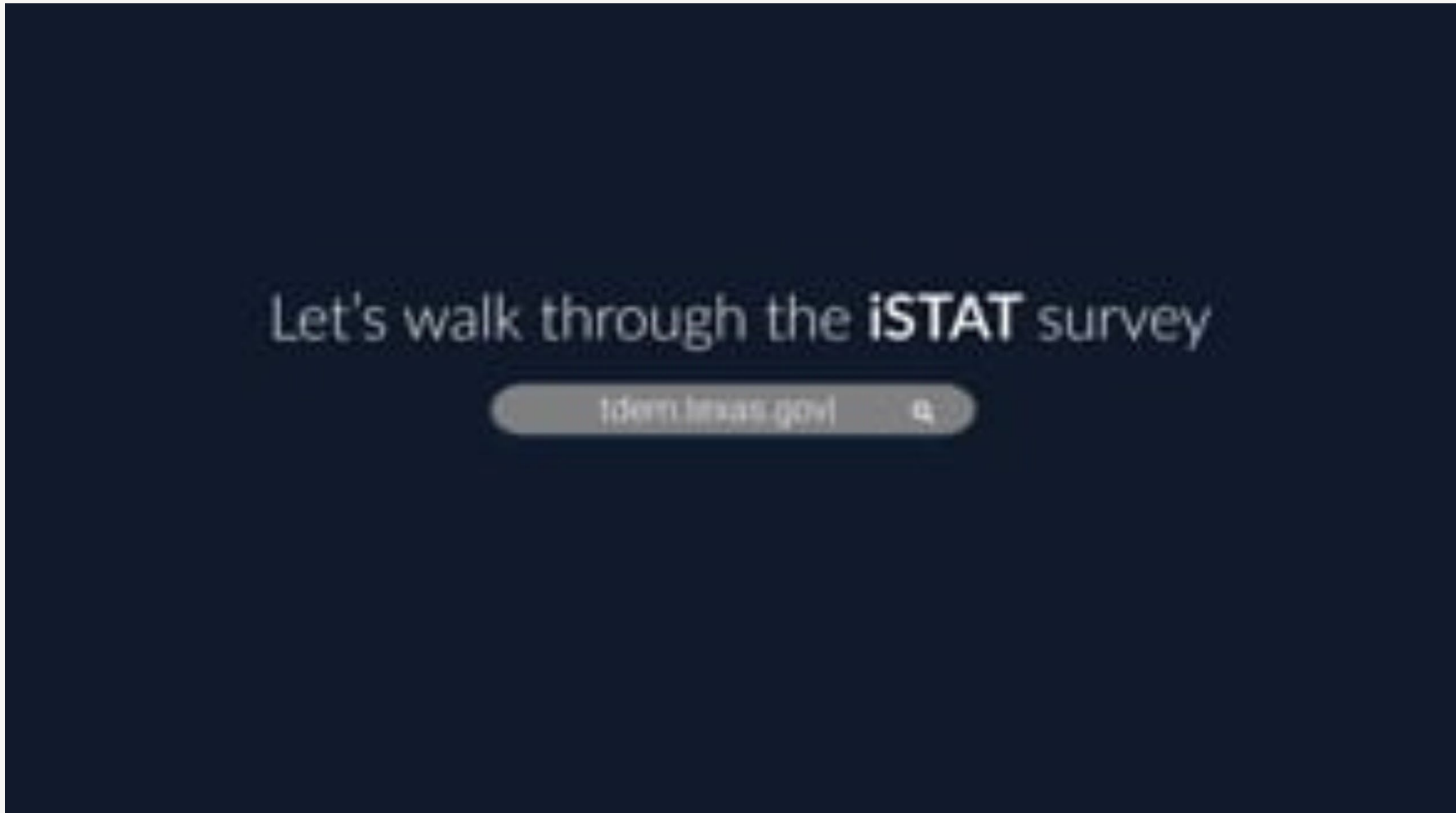
# State Recovery and How it Works

- State Recovery Resources from Texas Division of Emergency Management (TDEM)
  - Individual State of Texas Assessment Tool (iSTAT)
  - Submit images of damage through iSTAT
  - Helps local & state officials determine if assistance thresholds are met
  - Not reporting damage could mean no federal \$\$ is available



***SUBMIT DAMAGE:  
Scan QR code or visit  
[damage.tdem.texas.gov](https://damage.tdem.texas.gov)***

# How Does iSTAT Work?



# Evacuation Scenarios

*\*The scenarios shown are made for demonstration purposes only and do not reflect real events.*

# Jester Estates Scenario Background

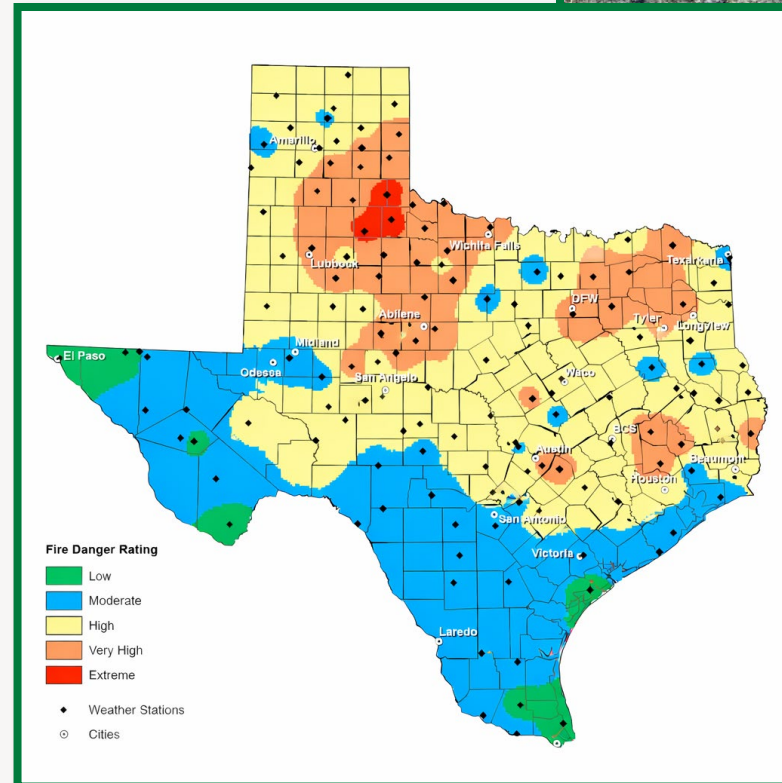
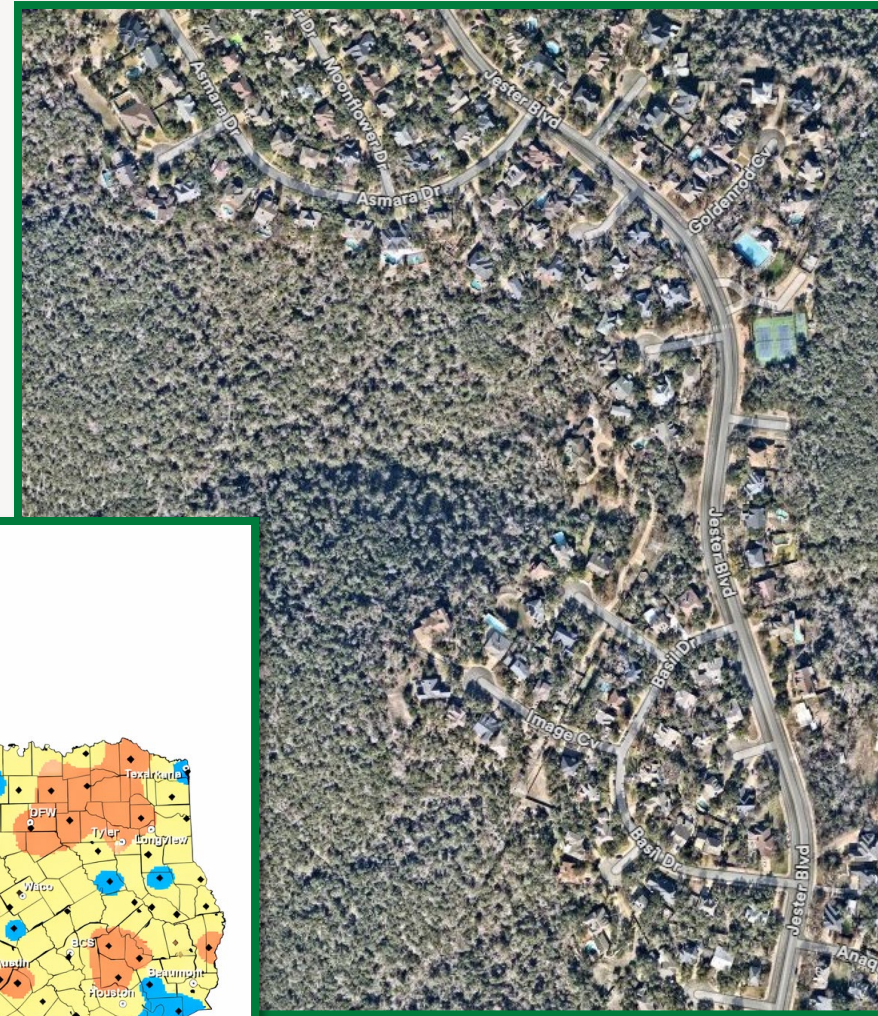
Date October 19th

Time 1400 Hours

## Weather

- Temp 95 F
- RH 25%
- Winds South at 8 MPH
  - Gusting to 15 MPH
- Live Fuel Moisture
  - Ashe Juniper 75% (AKA Cedar)

NFDRS: High/ Very High



# Jester Estates Incident Summary

E32 responded to smoke investigation west of Basil Dr. near high power lines.

- Fire located deep in wooded area with limited access.

BC3 assumed IC, requests:

- Full Brush Alarm, STAR Flight, TAMFS, Type 2 Engine Strike Teams (structure defense / evacuation)

Evacuation Order:

- Basil Drive and Cu De Sac's off Basil Drive.
- EMS establishes a TAP at the Jester Village Shopping Center.

Evacuation Order Expanded:

- Streets and Cul De Sac's off Asmara Drive from Jester Blvd to High Hollow Dr.

Evacuation Warning:

- East of Jester Blvd from Clove Cove to Pampas Cove and Houses east of Moonflower Dr.

Shelter-In-Place:

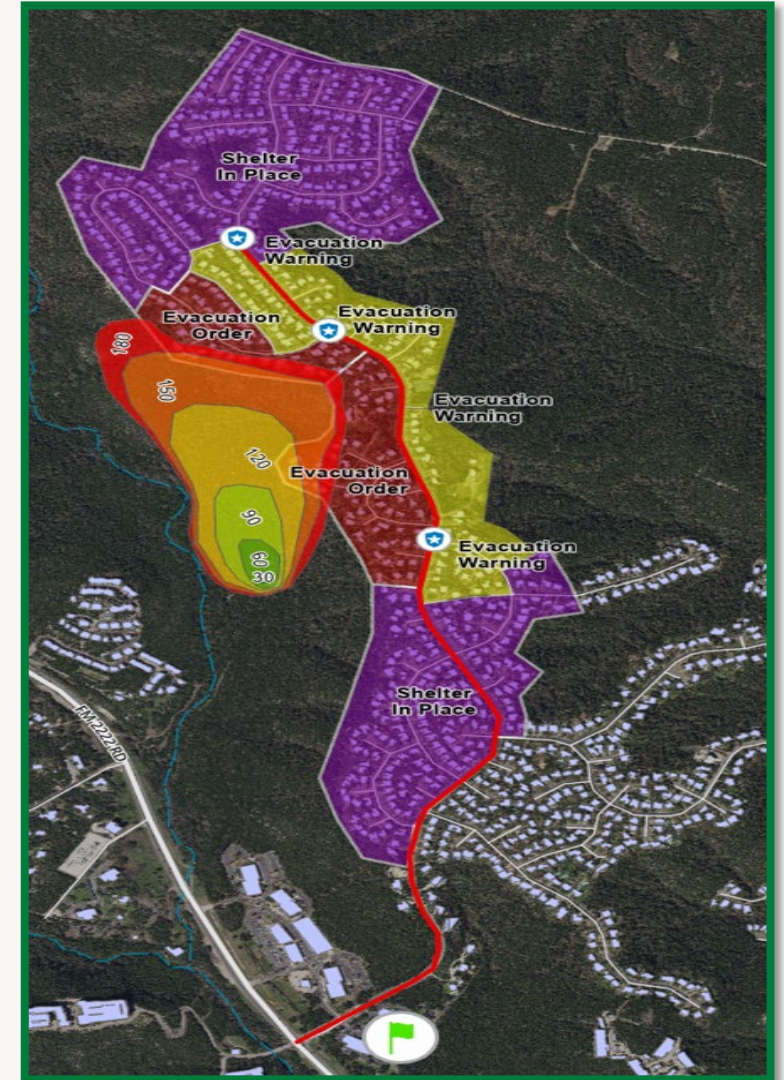
- Encompassing all Streets and Coves from Anaqua Dr./ Fox Tree Cv. East of Jester; all homes West of Jester from Anaqua Dr. to Jester/ Halbert Dr.
- Streets and Cul De Sac's off Asmara Dr. from Jester to High Hollow Dr., Basil Dr. and Cu De Sac's off Basil Dr.

APD:

- Roadblocks: Aloe Cv./ Jester, Midpark Ct./ Jester, Orange Dr / Jester and Jester / RR 2222
- Checkpoints adjusted to support phased evacuations.
- Evacuees routed via Jester Blvd to Jester Village Shopping Center TAP
- Some refusals, residents warned of no rescue if conditions worsen.

Incident outcome

65 Acres; 24 Structures Damaged/ Destroyed; 125 Structures Under Evac. Order; 112 Structures Under Evac. Warning; 443 Structures Shelter in Place





# Questions?

---

Contact

[hsemcommunications@austintexas.gov](mailto:hsemcommunications@austintexas.gov)

# Learn More



**[ATXWildfireHub.com](https://www.ATXWildfireHub.com)**  
**[www.ReadyCentralTexas.org](https://www.ReadyCentralTexas.org)**