

I lift my eyes un - to the

7 $A\flat$ Maj7 $B\flat$ G min7 C C

hills, oh Lord; where does my help come from?

10 G min7 $E\flat$ M7 C

My help_ comes_ from the Lord a-bove, the Ma-ker of Hea-ven and

13 C G min7 $B\flat$ M7

Psalm 121

16

earth! He will not let your foot slip; He, who

16

C A^bMaj7 C

19

watches o-ver you will not slum - ber. The God who wa-tches o-ver

19

G min7 Em7/G C C sus4A^bMaj7

22

Is - ra - el will not slum - ber, He will not sleep.

22

C G min7 C

25

Vocal line for measures 25-27. The melody starts on a half note G4, followed by quarter notes A4, Bb4, C5, D5, E5, F5, G5. It then descends to a half note G4, followed by quarter notes F4, E4, D4, C4. The line ends with a quarter rest.

I lift my eyes un-to the hills, oh Lord; where does my help come

Bass line for measures 25-27. It starts with a half note G2, followed by quarter notes A2, Bb2, C3, D3, E3, F3, G3. It then descends to a half note G2, followed by quarter notes F2, E2, D2, C2. The line ends with a quarter rest.

25

C G min7 EbM7

Piano accompaniment for measures 25-27. The right hand plays chords: C major (G4, Bb4, C5), G minor 7 (G4, Bb4, C5, D5), and Eb major 7 (G4, Bb4, C5, D5). The left hand plays a bass line with quarter notes: G2, A2, Bb2, C3, D3, E3, F3, G3.

28

Vocal line for measures 28-30. It begins with a quarter rest, then a half note G4, followed by quarter notes A4, Bb4, C5, D5, E5, F5, G5. It then descends to a half note G4, followed by quarter notes F4, E4, D4, C4. The line ends with a quarter rest.

from? My help_ comes_ from the Lord a-bove, the

Bass line for measures 28-30. It begins with a quarter rest, then a half note G2, followed by quarter notes A2, Bb2, C3, D3, E3, F3, G3. It then descends to a half note G2, followed by quarter notes F2, E2, D2, C2. The line ends with a quarter rest.

28

C C G min7

Piano accompaniment for measures 28-30. The right hand plays chords: C major (G4, Bb4, C5), C major (G4, Bb4, C5), and G minor 7 (G4, Bb4, C5, D5). The left hand plays a bass line with quarter notes: G2, A2, Bb2, C3, D3, E3, F3, G3.

31

Vocal line for measures 31-33. It starts with a half note G4, followed by quarter notes A4, Bb4, C5, D5, E5, F5, G5. It then descends to a half note G4, followed by quarter notes F4, E4, D4, C4. The line ends with a quarter rest.

Ma-ker of Hea-ven and earth! He will not let your

Bass line for measures 31-33. It starts with a half note G2, followed by quarter notes A2, Bb2, C3, D3, E3, F3, G3. It then descends to a half note G2, followed by quarter notes F2, E2, D2, C2. The line ends with a quarter rest.

31

BbM7 C AbMaj7

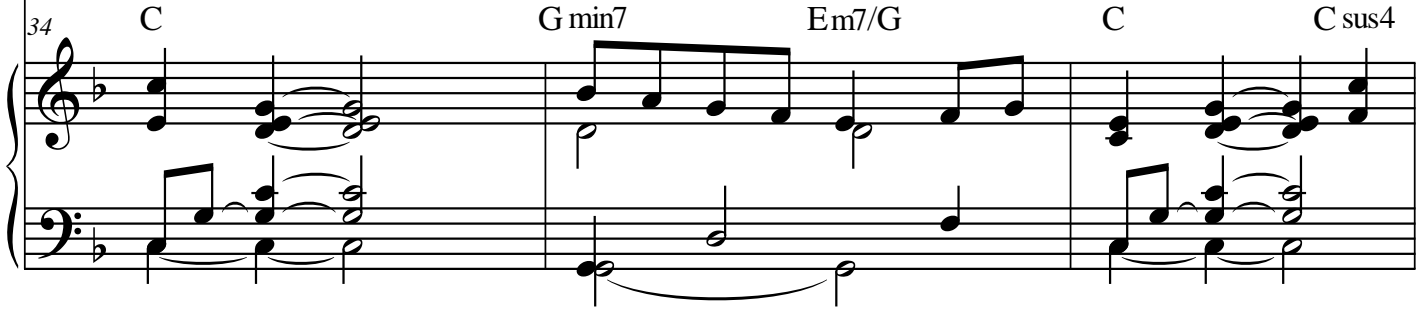
Piano accompaniment for measures 31-33. The right hand plays chords: Bb major 7 (G4, Bb4, C5, D5), C major (G4, Bb4, C5), and Ab major 7 (G4, Bb4, C5, D5). The left hand plays a bass line with quarter notes: G2, A2, Bb2, C3, D3, E3, F3, G3.

34



foot slip; He, who wat-ches o - ver you will not slum - ber.

34

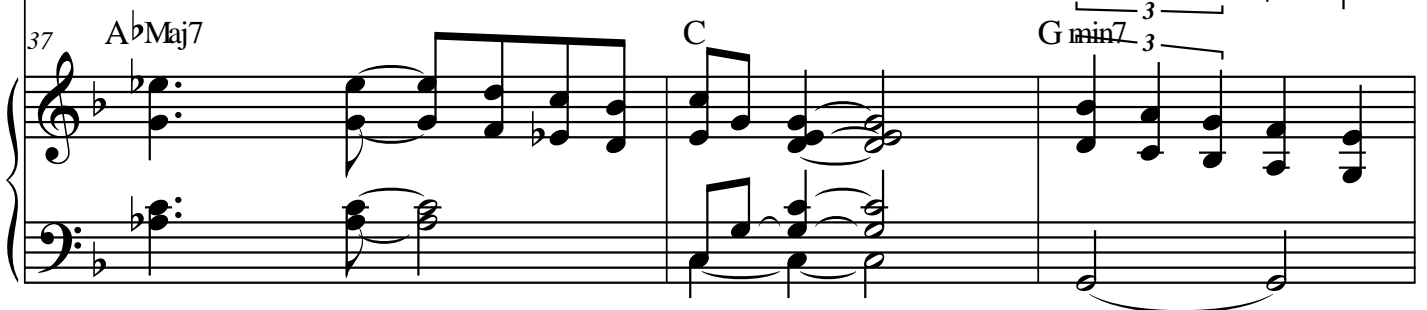


37



The God who wa-tches o - ver Is-ra - el will not slum-ber, He will not

37

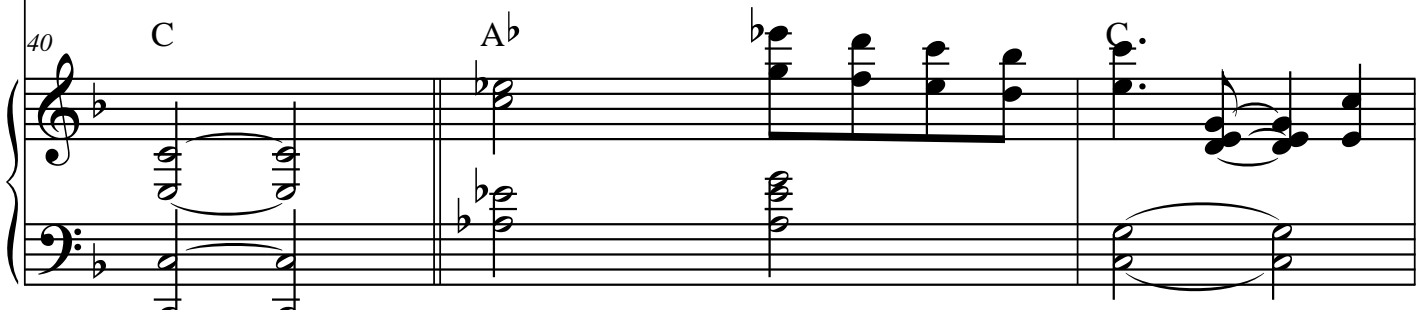


40



sleep. The sun will not harm_ you by day; the

40



moon will not harm you at night. The Lord will keep you from all

43 F7 C Ab

harm both now and for - e - ver more.

46 G min7 C

Now and for - e - ver more.

49 G min7 C

That's ½ of the music, and I hope you like it. To see the full piece and to purchase it, please fill out the ORDER FORM, and you will receive the complete sheet music as a .pdf download. Thank you—and please enjoy performing and singing my music!

