

# GREAT PLAINS CCRR



## In This Issue

- 3 Road Trip
- 4 Pyramid Model
- 6 Vaccination



# *Our Staff*



Amber Cuyler  
Program Director  
580-695-6999  
acuyler@gpccrr.org



Rachel Myrko  
Child Care Coordinator  
405-250-3360  
rmyrko@gpccrr.org



Lisa Earls  
Infant Toddler Specialist  
580-726-3383  
lisa@gpccrr.org

## **Office Hours:**

Mon-Thurs  
8:30-5:00pm

Friday:  
8:30-3:00pm  
888-878-4417

## **Cache Office**

Hours:  
By appointment

[www.gpccrr.org](http://www.gpccrr.org)



# Howdy Partner!

Time's a wastin' - we've delayed our annual Road Trip long enough! We are planning to hit the trail in May! Our Road Trip theme this year is The Wild Southwest. We have loot bags full of activity ideas & fun materials/supplies to share. ☒

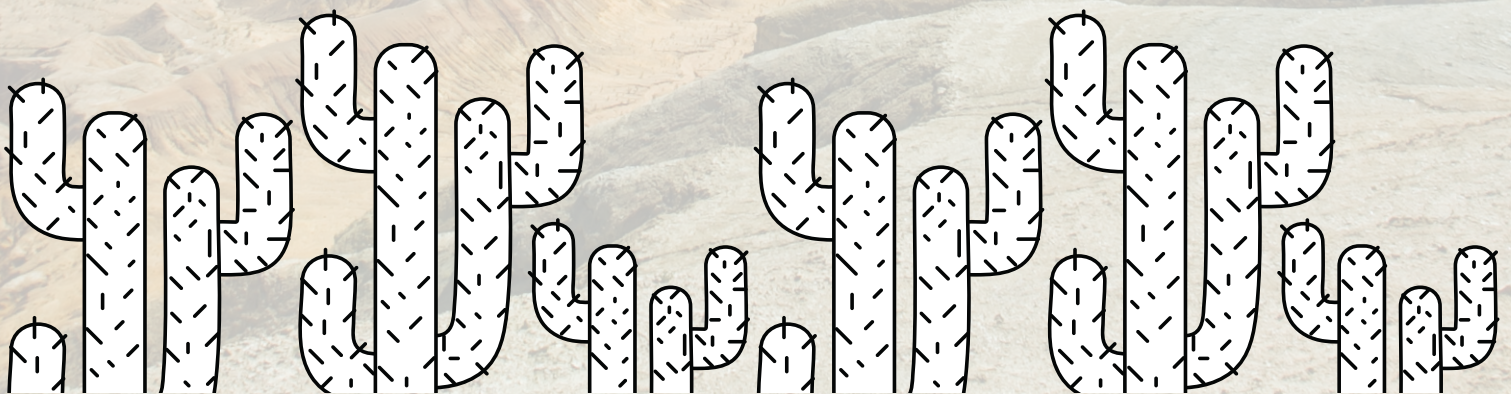
Will YOUR PROGRAM be one of the 100 stops we make?!?

Please take 5 minutes to fill out our Spring Update Survey. Be one of the first 100 to submit a completed survey and Yee-Haw - when our wagon rolls through your town in May, we'll drop some fun loot (valued over \$50) on your doorstep!!! ☒

We only have 25 of the 100 stops remaining - so, giddy-up & COMPLETE THE SURVEY (Road Trip Registration) HERE:  
<https://form.jotform.com/210894156803155>.

We haven't quite left Covid-19 in the dust, so precautions must be taken - we will NOT be coming inside any facility - porch deliveries only this year!

For the first 100, we'll be in touch with drop-off dates & more details via e-mail later this month!



# What is the Pyramid Model...

and why are so many early childhood professionals in Oklahoma (and across the country) talking about it? It is a proven way to teach and support young children in understanding and managing their emotions, which helps children handle life's tough situations with greater resiliency and hope. Oklahoma is one of 35 states working to implement these evidence-based practices that help teachers and families work together to provide responsive, supportive, positive environments in which all of our children can learn and thrive.

To learn more about the Pyramid Model, you can now take the free one-hour overview on the Statewide Training Calendar. [Type "Pyramid" in the course title search on the Statewide Training Calendar (<https://okregistry.org/v7/trainings/search>)]. The course name is Building Positive Social Emotional Skills for All Children: Introducing the Pyramid Model Framework, course #267798.

## *Reaching for the Stars*

Congratulations to these facilities for increasing their star level.

Dawn Teague 1+Star

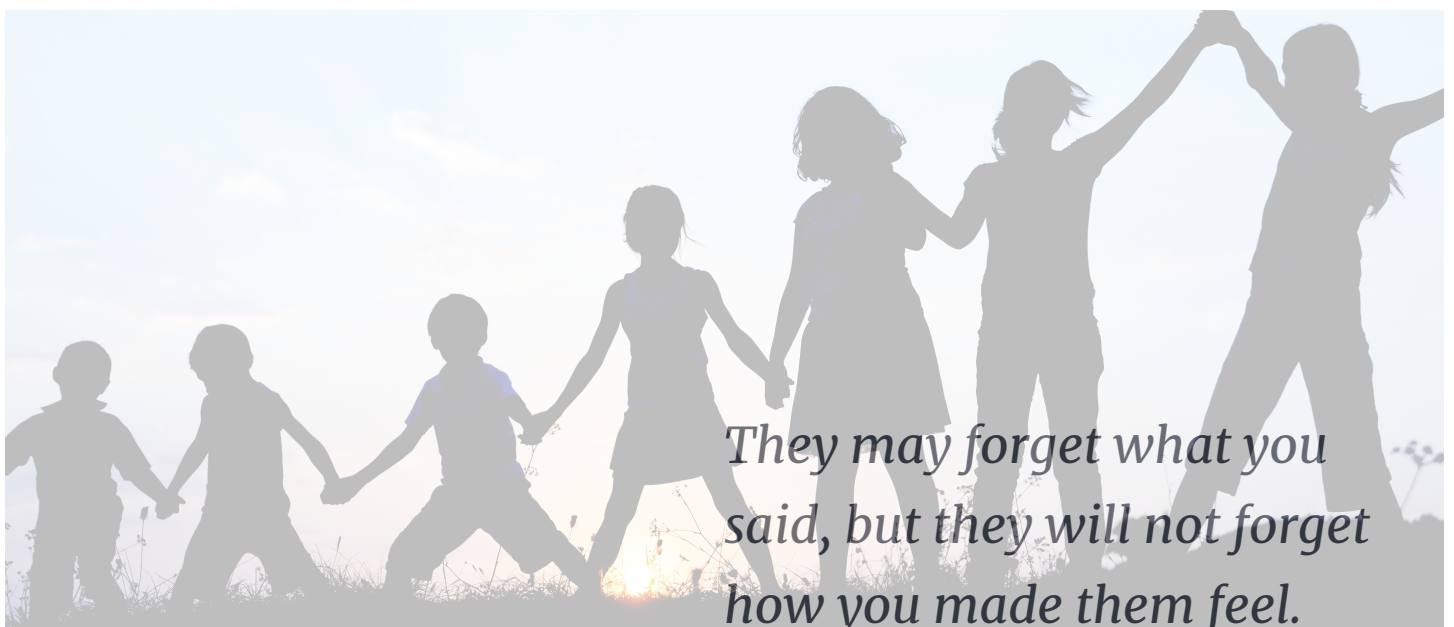




As stated in the newsletter released January 12th, 2021, the Child Care Development Block Grant (CCDBG) dollars authorized by federal coronavirus relief legislation last month will be used to fund a number of interventions to support Oklahoma children and families. As one of the interventions, on February 19th, Oklahoma Human Services (OHS) began issuing an additional round of child care quality and sustainability payments to childcare providers. Payments are based on facility capacity and the program's Reaching for the Stars Quality Rating and Improvement System level. The tiered payment system is as follows:

1 star-\$60/slot  
1+ star-\$70/slot  
2 star-\$90/slot  
3 star-\$100/slot

If there are any questions please send correspondence to  
[Childcare.OCCS@okdhs.org](mailto:Childcare.OCCS@okdhs.org)



*They may forget what you  
said, but they will not forget  
how you made them feel.*

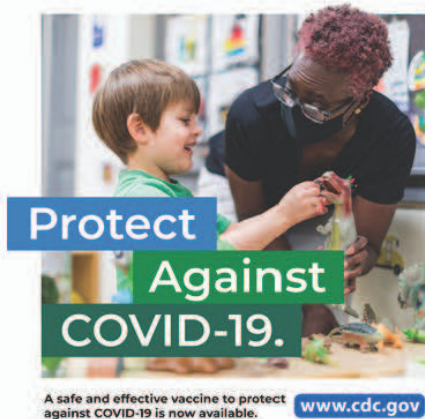
Carl W. Buechner



# Teachers, School Staff, and Childcare Workers: How to Get Vaccinated

On March 2<sup>nd</sup>, the U.S. Department of Health and Human Services issued a directive that all states immediately make eligible teachers, school staff, and childcare workers for COVID-19 vaccination across all vaccination providers.

Additionally, pharmacy locations that are part of CDC's Federal Retail Pharmacy Program are now giving priority to school staff and childcare workers for COVID-19 vaccination during the month of March.



In addition to existing state and local COVID-19 vaccination sites, teachers and staff in pre-Kindergarten to grade 12 (pre-K–12 schools) and childcare workers will be able to sign up for an appointment at more than 9,000 participating pharmacy locations nationwide.

## How do I schedule a vaccine appointment?

Teachers, school staff, and childcare workers who are interested in getting vaccinated should:

- Visit [VaccineFinder.org](https://www.vaccinefinder.org) to find out where vaccine is available in your community.
- Visit the [Federal Retail Pharmacy Program](https://www.hhs.gov/federal-retail-pharmacy-program) website to see which pharmacies are participating in your state. Most pharmacy partners are using online scheduling systems to schedule vaccination appointments for those eligible based on their limited vaccine supply. Check your local pharmacy's website to sign up.
- Contact your [state health department's website](#) to find additional providers in your area.



### Who can get vaccinated?

- Teachers and staff in
  - Pre-K–12 schools
  - Childcare centers
  - Head Start and Early Head Start programs
- Licensed childcare providers, including center-based and family care providers
- Classroom aides
- Bus drivers
- Janitors
- Counselors
- Administration staff
- Cafeteria workers
- Substitute teachers

Visit [CDC's Schools and Child Care Programs page](#) for more information on school reopening and strategies to reduce the spread of COVID-19.



# COVID-19 Guidance for Child Care

## Public Health Considerations for child care settings during the COVID-19 pandemic

The purpose of this tool is to assist directors and administrators in making decisions related to child care programs during the COVID-19 pandemic. It is important to check with state and local health officials and other partners to determine the most appropriate actions while adjusting to meet the unique needs and circumstances of the local community.

### Preparation and Planning

#### Prevent the Spread of COVID-19

- Promote healthy hygiene practices such as frequent hand hygiene with soap and water or with alcohol-based hand products, and employees wearing a cloth face covering.
  - Intensify cleaning, sanitization, disinfection, and ventilation.
  - Train all employees on health and safety protocols related to reducing the transmission of COVID-19 and all other communicable disease in the setting
- Require sick children and staff to stay home
- Communicate to parents the importance of keeping children home when they are sick. It's also important to communicate to parents the importance of keeping children home when they have a known exposure.
  - Establish procedures to ensure children and staff who come to the child care center sick or become sick while at your facility are sent home as soon as possible.
- Develop and implement procedures to check for signs and symptoms of children and employees daily upon arrival, as feasible.
- Plan to have an isolation room or area (such as a cot in a corner of the classroom) that can be used to isolate a sick child while waiting for them to be picked up.
- Sick staff members and children should not return to the childcare facility until they have met the criteria to discontinue home isolation

## **If COVID-19 is confirmed in a child or staff member**

- Be ready to consult with the local health authorities if there are cases in the facility or an increase in cases in the local area. Local health authorities will take the primary role of case and contact investigations in collaboration with your childcare licensing agency. (See <https://coronavirus.health.ok.gov/>). Local case investigators will be able to provide isolation and quarantine guidance and dates of return for any impacted staff or attendees.
- The childcare center should notify any staff/attendees who were in close contact (defined below) with the case during the 2 days before their symptom onset or test date (whichever is earlier) through to the date they are notified of your test result (infectious period). Close contacts include but are not limited to: staff/attendees in the same classroom of the case, and staff/attendees within 6 ft of the case for 15 minutes or more during the infectious period of the case.
- Notify your local child care licensing specialist about your positive child/staff member. If a facility has trouble reaching the local specialist, contact Child Care Services within the Department of Human Services state offices for assistance: 405-521-3561 or toll free: 1-844-834-8314.

## **Return to the childcare setting**

- Employees and attendees who test positive for the virus or have a member of their household test positive may be required to be isolated or quarantined and prohibited from returning to the child care program until meeting the CDC requirements for being around others.
  - o Individuals who believe or know they had COVID-19, and have had symptoms, may not be around others until ALL of the following conditions have been met:
    - o 24 hours with no fever,
    - o Symptoms have improved
    - o At least 10 days since symptom onset.



- o Individuals who have tested positive for COVID-19, but have had no symptoms, may not be around others until after 10 days have passed since the sampling date of the first positive test.
- o Individuals who have had close contact with someone who has tested positive for COVID-19 are recommended to not be around others through 14 days after their last date of exposure. Two alternative quarantine options to the recommended full quarantine have recently been approved for individuals:
  - o 10 – Day Quarantine Without Testing: If the exposed individual remains symptom free, their quarantine may end after day 10 from their last date of exposure. They should continue to closely monitor for symptoms, practice social distancing, and ensure a face covering is worn around others through 14 days after their last date of exposure.
  - o 7 – Day Quarantine With a Negative Test Result: If the exposed individual tests negative from a sample that was collected on or after day 5 and they remain symptom free, the quarantine may end after day 7 from their last date of exposure. They should continue to closely monitor for symptoms, practice social distancing, and ensure a face covering is worn around others through 14 days after their last date of exposure.
- o If the individual chooses to follow the alternative quarantine options, it's expected that they practice social distancing and wear a mask while around others through 14 days after their last date of exposure. If an exposed individual is unable to comply with these preventative measures while in the facility, it's expected they do not return to the childcare setting until after 14 days from their last date of exposure if required by the facility.
- o If the exposed close contact is more than 10 days beyond COVID-19 vaccine completion (appropriate number of total required doses depending on the vaccine brand), they will NOT be required to quarantine after an exposure to COVID-19.

# CECPD NEWS:

## Certificate of Achievement Stipend APPLICATIONS

Current guidelines require that all applications for the four (4) stipends must be submitted by June 30, 2021. We have extended the deadline to submit your applications until September 30, 2021.

## Certificate of Achievement Stipend TRAINING

We have changed the training calculation process for the 2nd-5th Certificates of Achievement. For the 1st Certificate, we look back five (5) years and for the 2nd-5th Certificates we now look back 12 months.

**BENEFIT:** You can take training for multiple Certificates of Achievement at the same time. However, you can only apply for one Certificate at a time.

1st Cert of Achievement – Looks back five (5) years for training

2nd Cert of Achievement – looks back 12 months from the application date

3rd Cert of Achievement – looks back 12 months from the application date

4th Cert of Achievement – looks back 12 months from the application date

5th Cert of Achievement – looks back 12 months from the application date

## REMINDER: STIPEND TRAINING IS SPECIFIC

Training is specific! Be sure you are taking the right ones. See below to locate approved trainings for each Certificate. It's as easy as 1, 2, 3, 4.

1. Visit the Statewide Training Calendar at [www.okregistry.org](http://www.okregistry.org).

2. On the left navigation menu, click on Training Content.

3. Click on Certificate of Achievement and Stipend.

4. Choose the Certificate of Achievement you are interested in and the required classes will be displayed.

We believe these changes will make a positive difference in the Stipend process.

If you were denied a Certificate of Achievement because you took an approved training before a previous Certificate of Achievement was awarded, you do not need to call CECPD; you can simply reapply, and approved trainings you have taken in the past year will be reviewed.

For upcoming trainings visit [www.okregistry.org](http://www.okregistry.org)



# Early Childhood Care & Education COVID-19 Guidance

## Flowchart Social Media Posts

The following posts are to help assist you in sharing this resource on your own and/or your organization's social media, including Facebook and Twitter.

### Facebook

1. Are you an early child care or education provider looking for health and safety resources to help you navigate the pandemic? Check out this online tool that will direct you to Oklahoma and CDC recommendations on everything from proper sanitization to operating during COVID: <https://bit.ly/3vygZNO>
2. It can be overwhelming when an early child care and education provider or the children they serve test positive to COVID-19. We have an easy-to-use resource for you that will help you make dynamic, on-the-spot decisions and answer the questions you might have about testing sites or contact tracing. <https://bit.ly/3vygZNO>
3. In addition to focusing on the health and safety of the children in your care, it's important to feel you know how to communicate with families during the ongoing changes of the pandemic. This new resource, <https://bit.ly/3vygZNO>, can help you successfully guide parents so that you're confidently working together in the days ahead.
4. Stop Googling and start using our new Early Childhood Care & Education COVID-19 Guidance. With six topics: Testing & Tracing, Isolation Guidance, Closures & Reopening, PPE & Vaccine Information, Best Practices to Protect Staff & Children, and Communicating With Families, you can filter the information easily and according to your needs. Just click the link: <https://bit.ly/3vygZNO>
5. We've done hours of research and filtered information from the state and CDC to bring you easy-to-access, online tools that provide the direction you need to care for young children during the pandemic. <https://bit.ly/3vygZNO>

## Twitter

1. Click the link and find resources that empower #earlychildhood providers to best care for the health and safety of young children during the pandemic. <https://bit.ly/3vygZNO>
2. Are you an #ECCE provider in search of how to keep the children in your care healthy and safe? Our new resource makes it easy to find what you need – using PPE, quarantining, communicating with parents and more. <https://bit.ly/3vygZNO>
3. We're so grateful for #childcare workers who have helped us get through this pandemic by taking care of our families! Now we have a new resource to help providers continue their good work. This easy-to-use chart answers questions about PPE, exposure, etc. <https://bit.ly/3vygZNO>
4. Stop Googling and start using our new Early Childhood Care & Education COVID-19 Guidance to keep your workplace and the children you care for safe. With a compilation of Oklahoma and CDC resources, all of your questions are covered: <https://bit.ly/3vygZNO>
5. We've done hours of research and filtered information from the state and CDC to bring you easy-to-access, online tools that provide the direction you need to care for young children during the pandemic. <https://bit.ly/3vygZNO>

