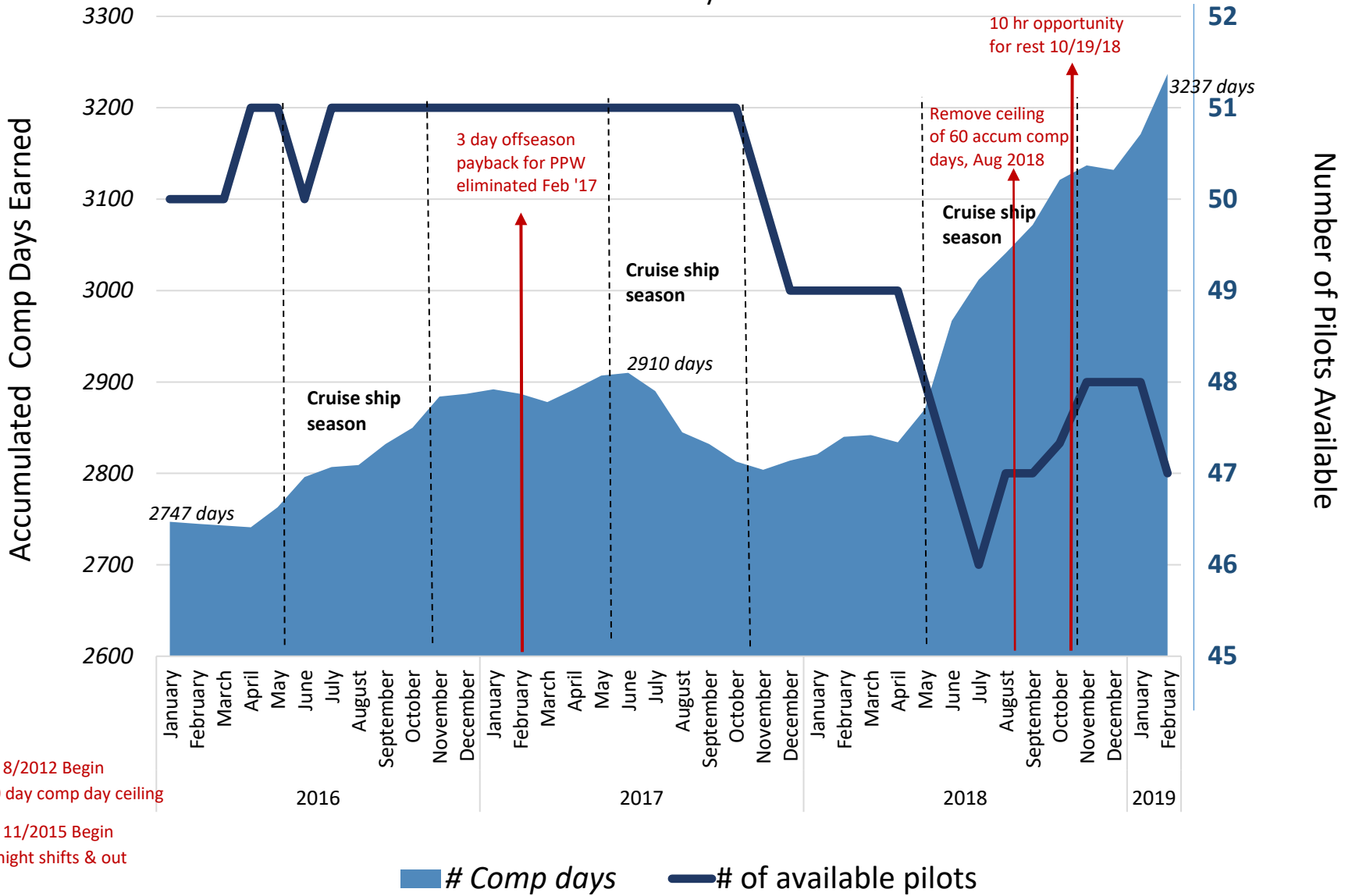


## Attachments regarding Discussion Concerning Setting the Number of Pilots in the Puget Sound Pilotage District

- Accumulated Comp Days/Number of Available Pilots  
Progression from January 2016 – February 2019
- Tally of Range of Assignments **ALL** Licensed Pilots 2018  
Total pilots with assignment range of 0-5, 6-9, 10-14, 15-20, and 21+ each month of 2018
- Average Number of Assignments per Day of Week – 2018
- Total Number of Assignment per Day per Month – 2018
- Number of Repositions & Assignments by Month  
REVISED TO Years 2016 → 2018 attached
- Total Repositions to/from Port Angeles and Total Assignments  
REVISED TO Years 2016 → 2018 attached
- Per Pilot Number of Assignments per Month for 2018, 2017, 2016  
Listed in descending order, with notes

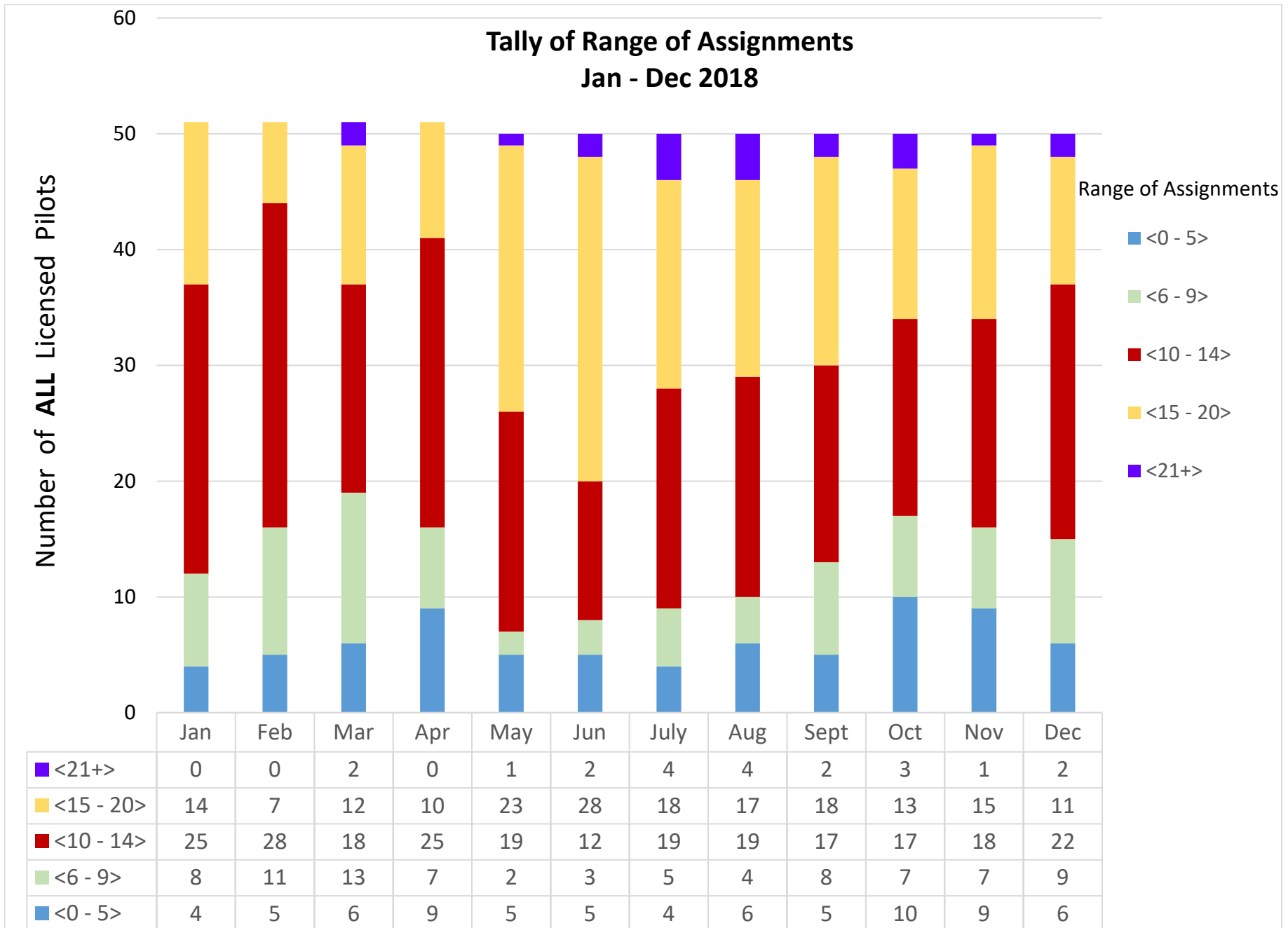
### Accumulated Comp Days / Number of Pilots 2016- February 2019



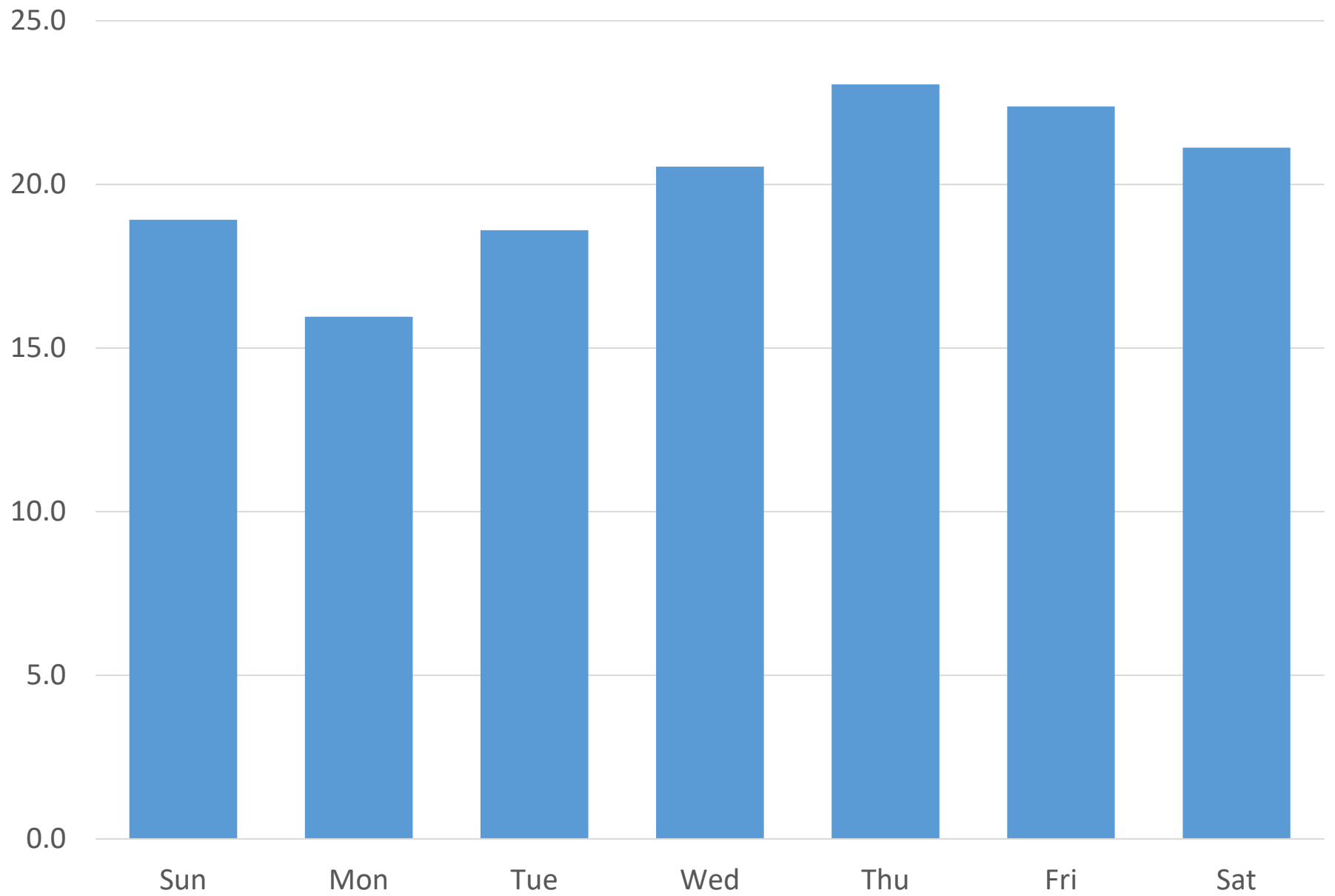
\* 8/2012 Begin  
60 day comp day ceiling

\* 11/2015 Begin  
3 night shifts & out

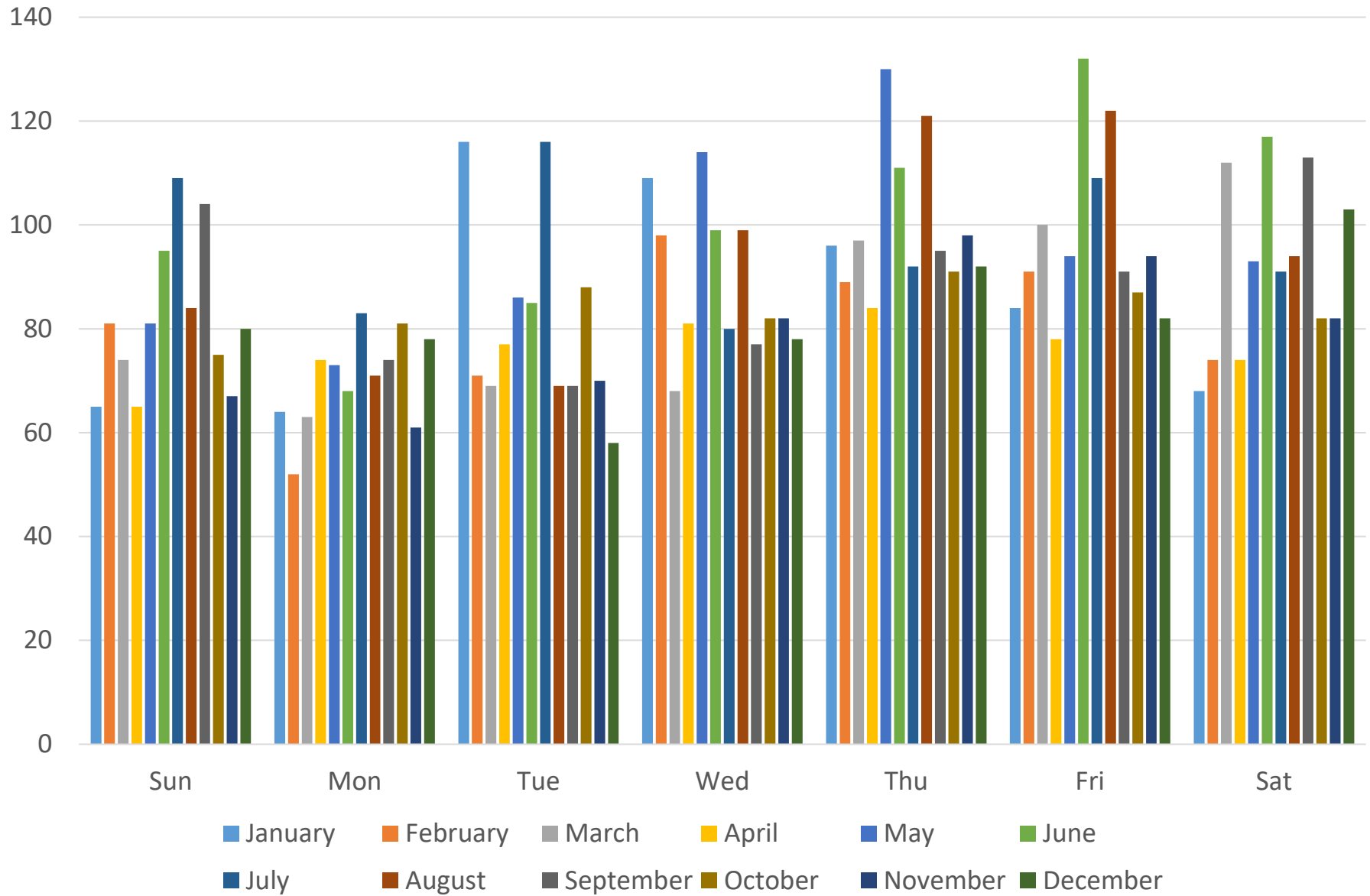
Licensed pilots, **not** including President and any pilots Not Fit for Duty



2018 Average Number of Assignments per Day of Week

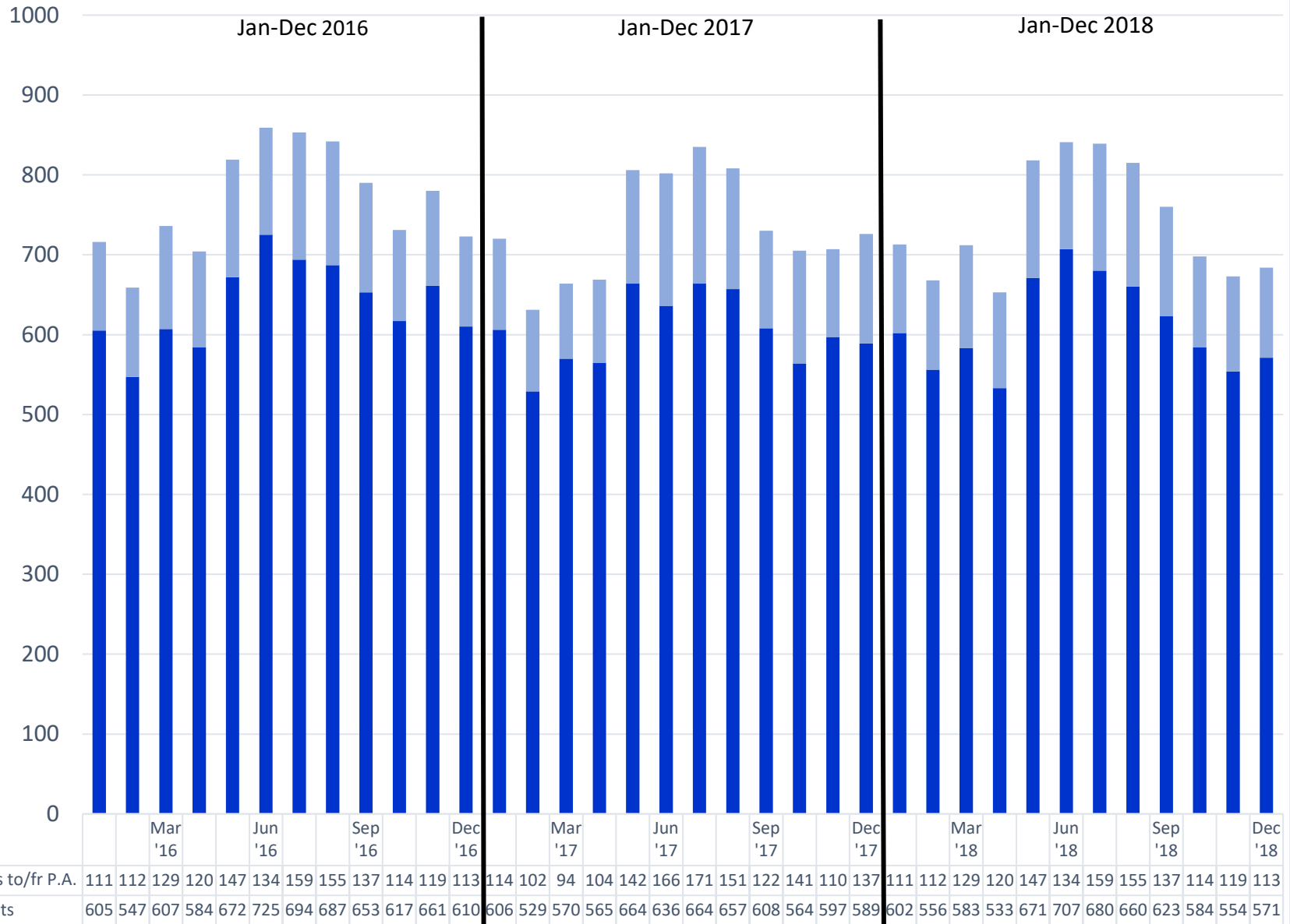


Total Number of Assignments per Day per Month  
2018

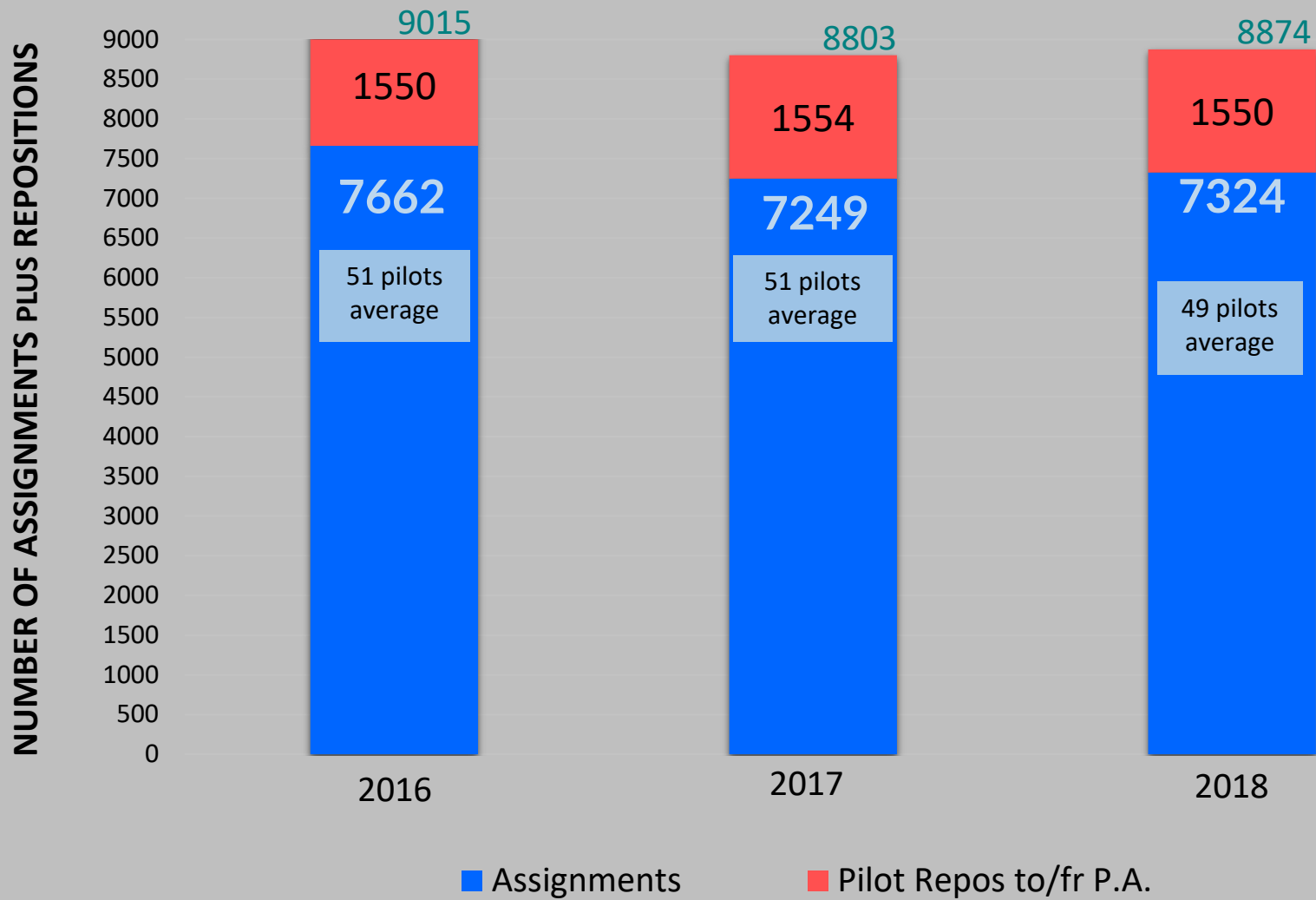


# Number of Repositions & Assignments by Month

**REVISED TO 2016 - 2018**



Total Repositions to/from Port Angeles and Total Assignments  
REVISED TO 2016 - 2018



2018		Jan	Feb	Mar	Apr	May	Jun	Jul	Aug	Sep	Oct	Nov	Dec	2018		
Actual Trips PSP	Lic or Ret Date	Actual Assign	Actual Assign	Actual Assign	Actual Assign	Actual Assign	Actual Assign	Actual Assign	Actual Assign	Actual Assign	Actual Assign	Actual Assign	Actual Assign	YTD Actual Assign	Pilot Level	
		0	0	0	0	0	5	3	0	0	1	0	0	9	5	President
		6	11	8	1	Retired 5/1								26	5	took comp days
										7				35	0	New pilot
		9	11	12	11	11	11	6	0	0	Retired 9/29			71	5	TEC--took comp days
		2	6	2	3	14	15	17	12	0	0	0	0	71	5	taking comp days
		18	12	8	11	12	18	8	0	0	0	0	0	87	5	5.67 mo NFFD
		12	13	4	4	3	15	16	7	6	2	3	5	90	5	PSP V.P.
		16	15	0	0	0	0	5	13	15	13	14	12	103	5	PSP Bd 4.75 mo NFFD
		11	5	9	8	12	10	6	11	15	9	11	8	115	5	BPC/TEC
		8	10	6	6	8	11	10	12	9	12	11	13	116	0	
		13	14	19	10	17	0	0	0	0	7	17	19	116	5	4.67 mo NFFD
		15	7	8	4	12	11	12	13	9	10	9	9	119	0	
		11	6	9	6	12	14	13	12	13	9	6	9	120	4	PSP Sec/Treas
		14	14	17	12	6	16	16	17	13	0	0	0	125	5	taking comp days
		16	13	4	15	14	19	17	7	17	3	0	0	125	5	taking comp days
		10	5	12	11	17	5	12	11	13	13	15	7	131	5	
		16	8	13	10	2	17	12	10	16	10	11	11	136	5	BPC/TEC
		11	7	5	14	12	9	12	9	16	17	14	11	137	1	
		11	9	15	5	15	17	18	15	5	12	5	13	140	5	
		12	10	8	13	11	13	16	11	16	11	9	12	142	1	
		11	9	15	3	16	20	10	13	7	3	17	19	143	5	
		0	0	8	15	14	17	11	16	16	16	17	13	143	5	2 mo NFFD
		7	11	7	12	19	6	19	17	13	14	6	13	144	2	
		15	11	12	6	10	17	13	14	14	10	14	12	148	3	
		14	9	19	13	5	17	14	17	14	6	13	12	153	5	
		14	9	13	13	14	13	13	15	9	24	6	10	153	5	
		14	16	12	2	18	16	20	20	6	3	16	13	156	5	Exam Com
		16	12	7	13	17	18	15	5	12	16	10	15	156	3	
		13	9	16	11	15	15	11	19	16	16	9	8	158	3	
		7	14	14	12	17	6	19	16	18	13	7	16	159	5	
		6	14	19	15	15	4	21	14	14	17	3	18	160	5	
		14	11	13	12	16	16	3	14	20	12	16	13	160	5	
		17	8	16	17	13	17	8	18	12	13	12	10	161	4	
		14	12	10	14	15	17	17	12	19	4	15	12	161	5	
		15	13	10	13	13	14	16	10	13	17	17	11	162	3	
		8	12	10	9	17	22	16	15	12	14	10	17	162	5	PSP Board
		10	11	15	11	15	13	10	30	11	12	16	10	164	5	
		6	14	6	16	18	15	17	6	18	16	12	22	166	4	
		19	5	14	9	14	17	16	14	16	23	15	6	168	5	
		13	12	20	11	10	18	13	14	14	20	13	10	168	5	TEC
		13	11	13	16	14	17	14	14	9	20	15	12	168	5	PSP Board
		17	12	12	11	19	16	14	19	11	14	13	11	169	5	
		13	19	10	10	10	18	17	16	15	9	17	18	172	5	
		12	15	14	11	16	20	14	16	15	9	15	15	172	5	
		14	13	12	12	16	14	23	17	13	16	13	9	172	5	
		3	17	23	15	14	15	17	22	12	13	3	19	173	5	PSP Board
		15	11	15	16	18	16	12	15	16	19	12	9	174	5	
		17	14	8	20	17	23	9	2	18	4	25	22	179	5	
		12	11	9	14	19	19	25	22	10	16	13	10	180	5	
		10	15	22	15	22	12	14	13	17	23	13	13	189	5	
		13	16	16	9	20	13	17	20	21	14	17	18	194	5	
		19	14	14	13	17	20	23	25	22	20	19	17	223	5	
<b>Total Assignments/ Month</b>		<b>602</b>	<b>556</b>	<b>583</b>	<b>533</b>	<b>671</b>	<b>707</b>	<b>680</b>	<b>660</b>	<b>623</b>	<b>584</b>	<b>554</b>	<b>571</b>	<b>7324</b>		
<b>Number of licensed PS pilots</b>		51	51	51	51	50	50	50	50	50	50	50	50	51		
<b>President</b>		1	1	1	1	1	1	1	1	1	1	1	1			
Medical circumstances:		1	1	1	1	1	2	3	2	2	1.67	1	1			
Available to pilot (#pres, NFFD)		49	49	49	49	48	47	46.0	47	47	47.33	48	48			
Pilots taking comp days→retirement					1				1	2	3	3	3			
# of Pilots with < 6 jobs (+1=Pres)		3 + 1	4 + 1	5 + 1	8 + 1	4 + 1	4 + 1	3 + 1	5 + 1	4 + 1	9 + 1	8 + 1	5 + 1			
Pilots w/>5 assgns & their avg # of trips		47P 12.6	46P 11.76	45P 12.6	42P 12.2	45P 14.7	45P 15.4	46P; 14.5	44P; 14.8	45P; 13.7	40P; 14.1	41P; 13.2	44P; 12.9			
<b>Average Assgn per pilot on rotation</b>		12.3	11.35	11.90	10.88	13.98	15.04	14.78	14.04	13.26	12.34	11.54	11.90			
<b>Cancellations</b>		23	13	20	8	15	8	10	6	12	13	10	24	<b>162</b>		
<b>PSP LOA Report (MOVES)</b>		579	543	563	525	656	699	670	654	611	571	544	547	<b>7162</b>		
Avg moves/pilot on rotation		11.82	11.08	11.49	10.71	13.67	14.87	14.57	13.91	13.00	12.06	11.33	11.40			



2017		Jan	Feb	Mar	Apr	May	Jun	Jul	Aug	Sep	Oct	Nov	Dec	2017		
Actual Trips PSP Earned Revenue Report Detail	Actual Assign	Actual Assign	Actual Assign	Actual Assign	Actual Assign	Actual Assign	Actual Assign	Actual Assign	Actual Assign	Actual Assign	Actual Assign	Actual Assign	Actual Assign	YTD Actual Assign	Pilot Level	
						not yet licensed					Lic 11/28	2	10	12	0	newly licensed
	1	0	4	0	0	2	1	0	1	3	0	1	13	5	President	
					not yet licensed					Lic 10/13→	3	17	13	33	1	newly licensed
	16	14	11	15	5	0	Retired 7/11	10	12	14	7	8	8	59	1	newly licensed
					not yet licensed		Lic 7/6 →	10	12	11	11	11	9	64	1	newly licensed
	12	9	12	14	12	11	7	0	4	0	0	Ret 11/28	81	5	comp days/retired	
	6	8	12	12	16	6	10	4	6	3	0	3	86	5		
	14	10	23	16	23	11	Retired 7/06/17						97	5	retired	
	13	16	3	14	14	16	15	6	4	5	Ret. 10/13		106	5	comp days/retired	
	8	4	6	11	10	16	15	12	11	13	2	Ret 12/01	108	5	comp days/retired	
	11	7	9	9	11	8	11	12	14	8	10	11	121	5	BPC Board/TEC	
	3	9	14	12	20	5	12	10	11	10	5	12	123	5	Harbor Safety Comm	
	11	10	12	7	10	10	7	11	14	11	12	9	124	5	PSP Director	
	14	10	17	2	15	15	17	19	7	9	0	0	125	5		
	11	6	8	4	11	15	14	16	5	12	9	14	125	5	BPC Board/TEC	
	11	4	11	8	16	12	10	13	9	12	13	9	128	5	PSP Director ?	
	8	10	10	11	10	7	15	11	8	19	8	11	128	5	PSP Director ?	
	7	12	14	8	13	7	18	17	11	13	2	14	136	5		
	10	8	12	15	15	10	6	17	15	14	9	5	136	4		
	14	7	17	2	15	18	12	11	2	11	15	12	136	5		
	13	9	12	10	10	11	14	12	11	11	12	11	136	2		
	9	12	10	11	17	8	8	14	10	10	14	13	136	3		
	13	7	10	11	12	14	8	10	15	12	15	10	137	3	PSP Director ?	
	8	9	6	12	12	13	12	12	15	14	14	10	137	2		
	15	6	15	9	15	13	5	12	13	13	12	10	138	5		
	10	13	14	3	19	11	14	17	4	5	12	16	138	4		
	11	14	4	6	14	10	12	12	12	14	16	13	138	5	BPC Board/TEC	
	8	13	12	12	10	14	16	11	8	12	13	11	140	5		
	13	14	11	12	11	11	9	14	12	9	11	13	140	3		
	7	11	12	6	13	16	14	14	9	13	12	13	140	5		
	11	10	12	6	15	11	14	12	12	14	11	12	140	5		
	11	10	12	9	10	11	15	9	17	13	13	11	141	5		
	3	16	13	15	2	13	16	16	11	12	13	14	144	5		
	15	13	11	9	3	15	23	16	12	2	15	14	148	5		
	14	5	10	8	13	11	12	8	16	24	18	10	149	5		
	11	11	15	12	8	15	13	15	15	5	15	14	149	2		
	14	11	8	14	4	11	14	12	17	13	15	16	149	5	PSP Director ?	
	14	16	4	15	11	16	14	7	12	9	16	15	149	5	PSP Director ?	
	14	8	12	15	4	15	15	15	14	6	17	16	151	3		
	8	0	13	12	16	10	17	23	15	15	11	12	152	5		
	16	16	14	16	3	17	10	11	17	4	14	14	152	4		
	13	9	13	19	10	11	7	17	20	16	12	5	152	5		
	13	9	10	18	14	17	8	19	13	10	12	11	154	5		
	14	10	6	12	20	16	15	9	13	8	14	17	154	5		
	12	3	9	13	15	12	17	17	19	13	14	11	155	5		
	13	12	7	11	22	10	15	15	14	14	12	10	155	5		
	16	10	10	12	18	16	12	7	12	12	17	14	156	5		
	14	15	12	5	16	15	17	17	8	9	17	14	159	5		
	16	15	16	13	4	12	19	19	10	6	14	15	159	5		
	16	11	8	13	16	19	14	8	18	14	16	9	162	5		
	10	13	10	10	12	10	17	16	23	17	5	20	163	5		
	19	10	14	9	16	14	14	17	15	9	11	15	163	5	PSP Director ?	
	9	17	9	17	18	18	11	17	10	17	15	11	169	5		
	10	13	15	17	23	17	14	13	8	14	10	16	170	5		
	23	14	6	13	22	14	19	11	11	11	16	12	172	5		
<b>Total Assignments/ Month</b>	<b>606</b>	<b>529</b>	<b>570</b>	<b>565</b>	<b>664</b>	<b>636</b>	<b>664</b>	<b>657</b>	<b>608</b>	<b>564</b>	<b>597</b>	<b>589</b>	<b>7250</b>			
Number of licensed PS pilots	52	52	52	52	52	52	52	52	52	52	52	51	52			
President	1	1	1	1	1	1	1	1	1	1	1	1				
Medical circumstances:											1	1				
<b>Available to pilot</b>	<b>51</b>	<b>51</b>	<b>51</b>	<b>51</b>	<b>51</b>	<b>51</b>	<b>51</b>	<b>51</b>	<b>51</b>	<b>51</b>	<b>50</b>	<b>50.9</b>				
Pilot burning comp days→retire					0.4	1		1	1.34	1.67	1	0				
# of Pilots with < 6 jobs(+1=Pres)	2 + 1	5 + 1	3 + 1	5 + 1	7 + 1	2 + 1	1 + 1	2 + 1	5 + 1	6 + 1	7 + 1	5 + 1				
Pilots w/>5 trips & their avg # of trips	49P; 12.2	46P; 11.15	58P; 11.6	46P; 11.9	44P; 14.5	49P; 12.8	50P; 13.2	49P; 13.3	46P; 12.8	45P; 12.0	44P; 13.2	46P; 12.5				
<b>Avg Assgn/Pilot on rotation</b>	<b>11.9</b>	<b>10.4</b>	<b>11.2</b>	<b>11.1</b>	<b>13.0</b>	<b>12.5</b>	<b>13.0</b>	<b>12.9</b>	<b>11.9</b>	<b>11.1</b>	<b>11.9</b>	<b>11.6</b>				
<b>Cancellations</b>	<b>12</b>	<b>9</b>	<b>22</b>	<b>15</b>	<b>10</b>	<b>11</b>	<b>11</b>	<b>14</b>	<b>7</b>	<b>14</b>	<b>28</b>	<b>8</b>	<b>161</b>			
<b>PSP LOA Report (MOVES)</b>	<b>594</b>	<b>520</b>	<b>548</b>	<b>550</b>	<b>654</b>	<b>625</b>	<b>653</b>	<b>643</b>	<b>601</b>	<b>550</b>	<b>569</b>	<b>581</b>	<b>7088</b>			
<b>Average Moves/pilot on rotation</b>	<b>11.65</b>	<b>10.20</b>	<b>10.75</b>	<b>10.78</b>	<b>12.82</b>	<b>12.25</b>	<b>12.80</b>	<b>12.61</b>	<b>11.78</b>	<b>10.78</b>	<b>11.38</b>	<b>11.41</b>				

2016														YTD Actual Assign	Pilot Level	
Jan	Feb	Mar	Apr	May	Jun	Jul	Aug	Sep	Oct	Nov	Dec					
Actual Trips PSP	Actual Assign	Actual Assign	Actual Assign	Actual Assign	Actual Assign	Actual Assign	Actual Assign	Actual Assign	Actual Assign	Actual Assign	Actual Assign	Actual Assign	Actual Assign			
	0	0	Retired 2/12											0	5	Comp days/Retired
	0	0	0	0	0	0	0	0	0	0	1	0		1	5	PSP President
				2	8	11	15	11	10	9	12	12		90	0	Newly licensed
	4	4	13	14	11	0	6	14	21	14	16	3		120	2	1 mo medical
	13	10	7	11	16	15	10	12	4	2	13	11		124	5	
	9	4	12	12	14	13	7	17	8	14	13	2		125	5	
	9	9	12	2	11	10	13	10	13	11	15	13		128	5	BPC/TEC/Exam
	8	5	10	9	7	16	9	15	9	11	17	14		130	1	
	15	11	4	12	13	14	13	4	15	9	14	6		130	2	
	0	0	13	15	13	13	13	8	10	13	16	16		130	5	2 mo Medical
	9	8	7	9	11	7	17	17	8	19	6	12		130	5	TEC/PSP Director
	14	7	9	8	8	15	15	11	12	13	9	9		130	5	PSP V.P./Director
	12	7	15	5	12	17	7	12	17	12	9	7		132	5	BPC/TEC Apr13
	5	12	15	15	16	3	15	15	13	11	1	13		134	3	
	13	5	16	14	8	16	8	12	13	16	10	4		135	1	
	13	6	14	4	9	15	12	18	9	16	12	14		142	2	
	11	6	8	12	17	17	13	8	15	13	14	8		142	5	
	4	15	14	13	22	1	15	15	16	17	0	12		144	5	
	13	13	14	12	3	13	19	14	14	3	13	14		145	5	PSP Director
	13	14	13	3	12	19	16	11	8	10	13	13		145	5	
	12	13	6	15	11	18	15	9	16	11	11	9		146	4	
	11	11	13	11	12	13	12	21	8	11	11	12		146	5	
	6	14	17	15	13	2	16	13	18	17	4	12		147	5	PSP Director
	9	12	10	18	15	14	14	10	12	11	8	15		148	3	
	15	17	15	13	11	15	9	14	13	13	7	6		148	5	PSP Sec/Treas
	12	14	8	11	13	14	11	12	12	11	16	15		149	2	
	11	13	0	13	18	22	20	18	0	12	9	13		149	5	
	13	13	11	8	11	13	14	12	11	16	19	9		150	3	
	15	12	15	4	11	16	13	13	14	11	18	10		152	4	
	14	6	15	11	15	20	8	13	16	16	10	8		152	5	PSP Director
	10	17	12	11	15	14	10	10	12	12	18	14		155	5	
	12	4	12	17	10	11	15	13	17	11	12	21		155	5	
	10	12	14	9	19	15	10	14	11	14	14	14		156	5	
	16	14	13	17	6	16	19	18	5	1	15	16		156	5	
	15	5	13	14	19	14	10	14	14	16	17	5		156	5	
	12	12	15	12	11	12	18	13	11	13	15	13		157	5	
	18	12	7	7	14	17	21	12	12	7	16	14		157	5	
	9	12	13	17	15	15	16	16	9	14	11	10		157	5	
	14	15	12	14	17	15	16	13	11	8	15	11		161	5	
	11	11	12	11	19	16	16	12	16	13	15	11		163	5	
	16	12	16	4	14	13	15	12	8	17	23	14		164	5	
	3	21	16	16	17	7	16	19	15	18	7	9		164	5	
	11	9	14	14	21	15	5	21	15	20	13	6		164	3	
	9	8	16	14	11	17	15	18	14	16	17	12		167	5	
	21	18	13	14	4	17	15	18	10	6	19	12		167	5	
	12	14	11	15	15	18	15	12	12	13	14	17		168	4	
	11	15	14	12	19	16	20	17	14	1	15	16		170	5	TEC
	12	14	16	14	16	17	15	13	18	14	9	13		171	5	
	19	11	10	14	18	13	14	9	17	18	15	18		176	4	
	17	9	9	9	22	24	15	12	19	12	15	14		177	5	
	18	19	14	9	10	19	17	11	17	10	16	21		181	5	
	21	13	9	12	11	20	12	8	25	16	17	20		184	5	
	25	10	20	17	8	22	14	22	16	5	16	17		192	5	
<b>Total Assignments/ Month</b>	<b>605</b>	<b>547</b>	<b>607</b>	<b>584</b>	<b>672</b>	<b>725</b>	<b>694</b>	<b>687</b>	<b>653</b>	<b>617</b>	<b>661</b>	<b>610</b>		<b>7662</b>		
Number of licensed PS pilots	52	52	51	52	52	52	52	52	52	52	52	52				
President	1	1	1	1	1	1	1	1	1	1	1	1				
Medical circumstances	1	1				1										
Available to pilot	50	50	50	51	51	50	51	51	51	51	51	51				
Pilots taking comp days->retire	1	1														
# of Pilots with < 6 jobs(+1=Pres)	6 + 1	8 + 1	2 + 1	7 + 1	2 + 1	4 + 1	1 + 1	1 + 1	3 + 1	5 + 1	3 + 1	4 + 1				
Pilots w/>5 trips & their avg # of trips	45P; 13	43P; 12.1	49P; 12.3	44P; 12.7	50P; 13.3	47P; 15.3	50P; 13.8	50P; 13.7	48P; 13.4	46P; 13.15	48P; 13.6	47P; 12.8				
Average Assgn per Pilot on rotation	12.10	10.94	12.14	11.45	13.18	14.50	13.61	13.47	12.80	12.10	12.96	11.96				
Cancellations	16	9	16	11	7	15	5	6	3	11	18	20		137		
PSP LOA Report (MOVES)	589	538	591	573	665	710	689	681	650	606	643	590		7525		
Avg Moves/pilot on rotation	11.78	10.76	11.82	11.24	13.04	14.20	13.51	13.35	12.75	11.88	12.61	11.57				