



Northern Illinois Farm Bureaus

.....
**FREE
AIRFARE**

See back for details

.....
11 DAY RIVER CRUISE HOLIDAY

Including two nights in
Lucerne, Switzerland

Tulip Time on Jewels of the Rhine

Switzerland • France • Germany • the Netherlands

Tour Dates: April 1 - 11, 2020



Tulip Time on Jewels of the Rhine

11 Days • 23 Meals Enjoy a relaxing and inspiring cruise on the Romantic Rhine, Europe's longest river. We travel onboard our modern ship, visiting iconic ports of call, sampling incredible cuisine, and absorbing the local atmosphere.

EXCEPTIONAL INCLUSIONS

- ❖ **23 Meals:** 9 breakfasts, 6 lunches and 8 dinners
- ❖ **Airport transfers** on tour dates when air is provided by Mayflower Cruises & Tours
- ❖ Visit **four countries**
- ❖ Two-night **hotel stay and touring** in Lucerne, Switzerland
- ❖ **Seven-nights in a suite or stateroom** of your choice onboard the vessel
- ❖ **All gratuities included** once aboard ship
- ❖ **First-class service** by an English-speaking crew
- ❖ **Shore excursions** with English-speaking local guides
- ❖ Explore the magnificent **Keukenhof Gardens**
- ❖ Personal **listening device** for shore excursions
- ❖ Visit **UNESCO World Heritage Sites**
- ❖ **All meals included** onboard with a variety of **international cuisine**
- ❖ Complimentary **regional wines, beer and soft drinks** with onboard lunches and dinners
- ❖ **New onboard Activity Manager** will support all EmeraldACTIVE excursions and host daily onboard wellness activities, games, classes and evening entertainment
- ❖ Complimentary **bottled water** in your stateroom
- ❖ Complimentary **WiFi onboard**
- ❖ Complimentary **bicycles onboard** for use ashore
- ❖ All port charges included
- ❖ \$55 in **Mayflower Money**

CRUISE AND HOTEL ACCOMMODATIONS

Days Two and Three – Hotel Europe, Lucerne, Switzerland

Days Four through Ten – Aboard an Emerald Waterways Star-Ship

Post cruise hotel stays available in Amsterdam. Call for details.



Enjoy seven-nights cruising along the Romantic Rhine River

DAY 1 – Depart the USA

Today you'll depart the USA on your overnight flight to Zurich, Switzerland.

DAY 2 – Zurich to Lucerne, Switzerland

Upon arrival in Zurich, transfer to your hotel in Lucerne to begin your Swiss adventure. The afternoon is at leisure to begin discovering your beautiful new surroundings. This evening, join your Mayflower Cruise Directors and traveling companions for an included dinner at the hotel. **Meal: D**

DAY 3 – City Tour of Lucerne

After breakfast, an included walking tour highlights the city's landmark, the famous 14th-century Chapel Bridge with its paintings of heroic town events, that crosses the Reuss River. See the 17th-century Renaissance Town Hall and town squares, all set amongst the beautiful backdrop of the Swiss Alps. The remainder of the day is at leisure. **Meals: B**

DAY 4 – Optional Excursion: Mt. Pilatus

Before departing for your ship in Basel, the day is free to enjoy at leisure or join the morning optional excursion to Mt. Pilatus – a mountain overlooking Lucerne that offers a unique alpine experience! This afternoon, travel by motorcoach to Basel, Switzerland for embarkation on your Emerald Waterways luxury river cruise ship. This evening, join your fellow travelers for dinner on board. Your Cruise Director will also conduct a port talk to review the activities and itinerary for the days ahead. **Meals: B, D**

DAY 5 – Breisach, Germany

Today you have a choice to visit a typical Black Forest Village, featuring many of the famous black forest items, like Cuckoo clocks, amongst other things. Alternatively, take part on a guided hike along some of the black forest trails. **Meals: B, L, D**

EmeraldACTIVE: Guided along through some of the Black Forest trails

EmeraldPLUS: Black Forest Cake Assembling presentation and tasting





Flowers and fragrances fill Keukenhof Gardens



Explore Heidelberg Castle on an included excursion with wine tasting

DAY 6 – Strasbourg, France

Once docked in Kehl, travel by coach across the river to Strasbourg, the capital city of the Alsace Region in France. Your guided walking tour will include the Grande Île, the historical city centre and UNESCO World Heritage Site known for its medieval black and white timber-framed buildings, old tanning houses, baroque sandstones building, canals and river locks, the city's star attraction is the cathedral, dominating the main square. **Meals: B, L, D**

EmeraldPLUS: Guided Tour of Strasbourg

DAY 7 – Heidelberg, Germany

Continue downstream to the town of Mannheim, located at the confluence of the Rhine and Neckar rivers. There you will have a chance to either visit the medieval town of Heidelberg including the impressive castle which overlooks the town or take part on an active hike to Heidelberg Hill. **Meals: B, L, D**

EmeraldACTIVE: Hike from Mount Königstuhl to Heidelberg

EmeraldPLUS: Wine Tasting in Heidelberg

DAY 8 – Koblenz, Germany

Cruise to the 2000-year-old town of Koblenz, which is situated at the confluence of the Rhine and Moselle rivers. You will have a tour of Koblenz and a chance to visit the Ehrenbreitstein Fortress on the opposite side of the river. This fortress was part of the Prussian defences against the French in the 19th century and later used as a headquarters for the American military during WWII **Meals: B, L, D**

DiscoverMORE: Moselle & Cochem Reichsburg Castle Visit (additional expense)

DAY 9 – Cologne, Germany

Founded by the Romans, Cologne is one of Germany's oldest and is famous for its magnificent World-Heritage listed Gothic Cathedral. Join your local guide for an included tour of the Old Town, with free time for exploring. Cologne is one of Germany's largest and most modern cities largely due to a rebuilding plan post WWII, and it has many different museums and galleries. This evening, join your Captain for a farewell reception and dinner. **Meals: B, L, D**

DAY 10 – Amsterdam, Holland

This morning, depart by coach for an included visit to the Keukenhof Gardens. Discover why it's called the "garden of Europe" as you admire gorgeous flowers at the peak of tulip season. Return to the ship in the afternoon to explore the city of Amsterdam at your leisure. **Meals: B, L, D**

DAY 11 – Amsterdam / USA

Bid a fond farewell to Europe and return home with memories of life enriching experiences from your cruise along the Rhine and Mosel Rivers. **Meal: B**

Itinerary is subject to change.



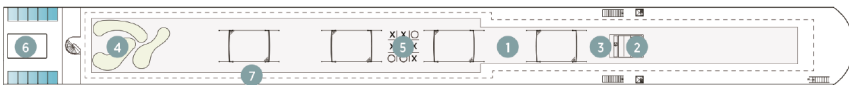
Cross the Reuss River via the historic Chapel Bridge in Lucerne, Switzerland

Seven nights accommodations aboard an

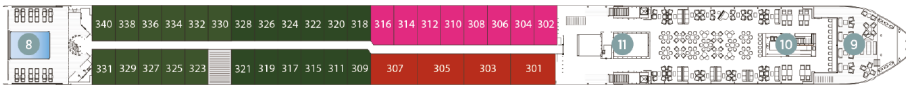
Emerald Waterways Star-Ship

Built: 2014-2017 Speed: 15.5 mph Staterooms: 80 Suites: 12 Length: 443 ft. Crew: 47

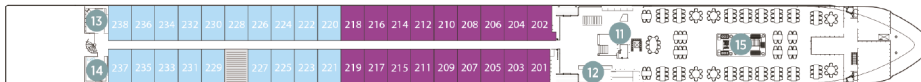
SUN DECK



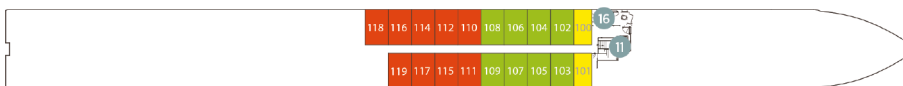
HORIZON DECK



VISTA DECK

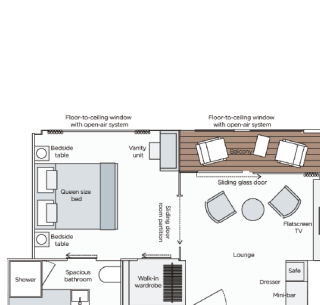


RIVIERA DECK



Public Areas and Ship Amenities

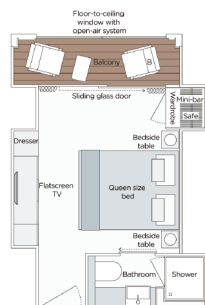
- 1 Sun Deck with Deck Chairs
- 2 Navigation Bridge
- 3 Sky Barbecue
- 4 Golf Putting Green
- 5 Games Area
- 6 Retractable Glass Roof
- 7 Walking Track
- 8 Daytime Pool & Bar / Evening Cinema
- 9 The Terrace
- 10 Horizon Bar and Lounge
- 11 Elevator
- 12 Reception
- 13 Wellness Area
- 14 Fitness Area
- 15 Reflections Restaurant
- 16 Hairdresser



Owner's One-Bedroom Suite

315ft²

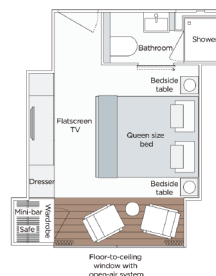
SA



Grand Balcony Suite

210ft²

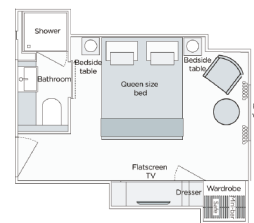
S



Panorama Balcony Suite

180ft²

A B C



Emerald Stateroom

162ft²

D E

2020 DEPARTURE DATE: April 1

CATEGORY	DECK	PER PERSON TWIN	SINGLE ROOM
D E Emerald Stateroom	Riviera	\$4,149	add \$2,199
B C Panorama Balcony Suite	Vista	\$4,799	add \$2,489
A Panorama Balcony Suite	Horizon	\$5,299	add \$2,749
S Grand Balcony Suite	Horizon	\$5,749	N/A
SA Owner's One-Bedroom Suite	Horizon	\$6,599	N/A

Please add \$100 per person for those that would like a local group pick up in Freeport with 10 or more travelers

FREE AIRFARE out of Chicago (\$1,800) when reservations are made by May 31, 2019!

Beginning June 1 please call for details.

Air itineraries may not be available until documents are received. Air seats are assigned by the airline for the entire group. Seat changes can only be attempted upon receipt of tickets and documents at which time availability may be limited. If specific seat assignments are vital to your reservation, we recommend individual air reservations rather than booking air with the group.

TOUR ACTIVITY LEVEL



A Travelers Protection Plan is highly recommended. Please contact Lindstrom Travel for more information.

Cancellation Charges Without Traveler's Protection

- 61 days and more – deposit amount
- 60 – 31 days – 20% of the tour cost
- 30 – 15 days – 30% of the tour cost
- 14 – 1 day prior – 40% of the tour cost
- Day of departure or early departure from tour – 100% of the tour cost
- No refund on unused portion

Exclusions: Mayflower Cruises & Tours reserves the right to alter its refund and cancellation policy when a substantial amount of cancellation or postponement of travel is attributable to: conditions resulting from an act of God, natural or man-made disaster, fire, government action, civil disorder, war, hostilities between nations, or unavailability of transportation through no fault of Mayflower Cruises & Tours.



FOR RESERVATIONS OR INFORMATION CONTACT:

Winnebago-Boone Farm Bureau (815) 962-0653
 Jo Daviess County Farm Bureau (815) 858-2235
 Carroll County Farm Bureau (815) 244-3001
 Kane County Farm Bureau (630) 584-8660
 Lake County Farm Bureau (847) 223-6506
 McHenry County Farm Bureau (815) 338-1520
 Stephenson County Farm Bureau (815) 232-3186