



HEARTLAND TIMBER HOMES

"More than a home...an heirloom"

Country Living

Mountain Series
Sequin



Lodgepole Pine

**YOU HAVE THE CHOICE
DO-IT-YOUR SELF BUILDING.**

or

**A QUALIFIED BUILDING CONTRACTOR TO BUILD YOUR
BUILDING FOR YOU.**

We have substituted precision-milled components for skilled labor.

Hence our, "adult-lego" building kit.

**Timbers Manufactured from
Dead Standing Western Red Cedar Trees
(Fire Killed or Died Naturally)**

Sequin Details

**Two Story, 1,492 Square Feet, Width 32 ft, Depth 36 ft,
Basement.**

4 Bedrooms:

**Master Bedroom, Main floor, 12 ft. – 10 in. x 11 ft. – 1 in., Second
Bedroom, Second floor, 13 ft. – 3 in. x 14 ft. – 8 in., Third Bed-
room Second floor 11 ft, ~ 8 in. x 14 ft, ~ 8 in., Fourth Bedroom
Main Floor 9 ft, - 1 in., x 10 ft, - 9 in.**

2 Bathrooms:

**Main Floor Bathroom , 4 piece, Second Bathroom, Second Floor
4 piece.**

Great Room: 14 ft.– 0 in. x 15 ft. – 2 in., with fireplace.

Kitchen/Dining Room: 13 ft.– 3 in. x 11 ft, – 5 in

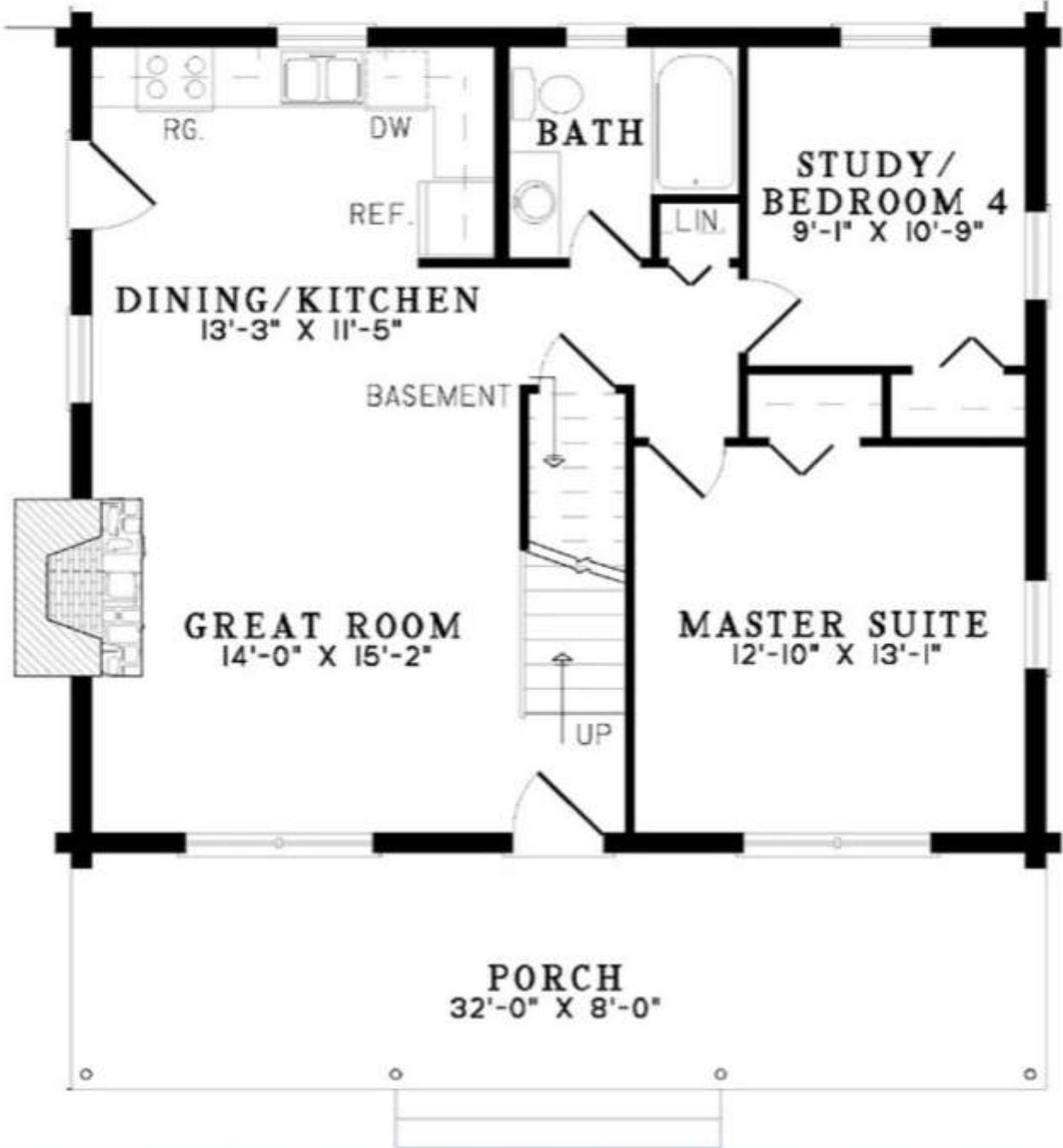
Attic: Three Storage Areas second Floor

Porch: Front Porch 32 ft, - 0 in. x 8 ft, - 0 in.

Basement: Unfinished 32 ft, x 36 ft.

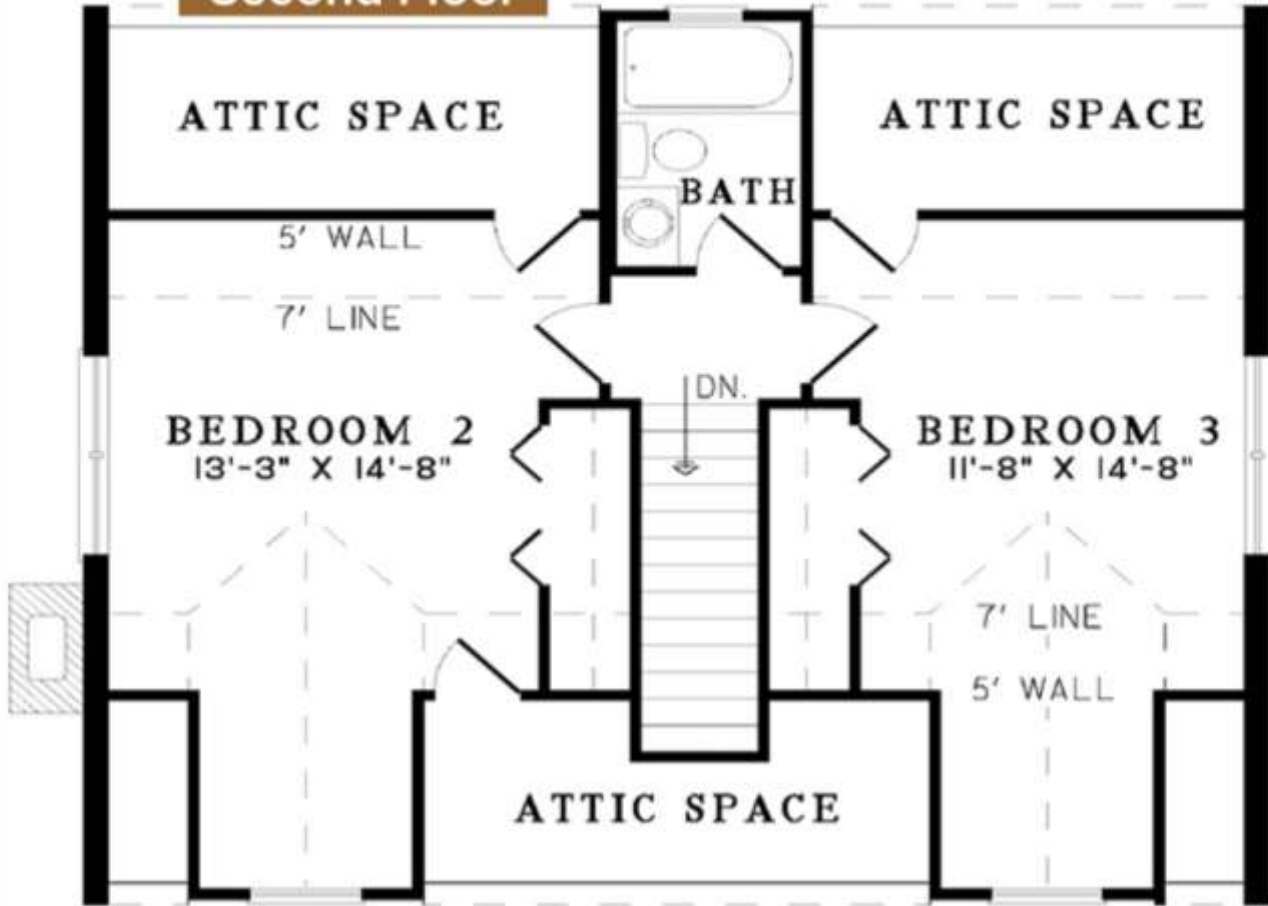
**The soul of Heartland Timber Frame Home living is Heritage,
Authenticity, Graciousness, Romance, Value and Comfort.**

Main Floor



Timbers Manufactured from Dead Standing Lodgepole Pine

Second Floor



Heartland Timber Homes North America

727 Lansdowne Street West, Unit 100, Peterborough, Ontario, K9J 1Z2, Canada

North America Tel: 1-800-545-2150 ext 555

All Other Countries Tel: 1-705-874-3195

Email: Sales@HeartlandTimberHomes.ca

Web Site: www.HeartlandTimberHomes.ca