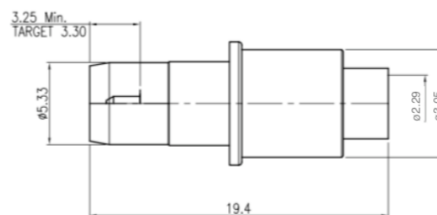


BMA CABLE CONNECTORS FOR D38999

Male Contact Plug Connectors for $\varnothing 0.085''$

Part # - PMM11B-A28G01

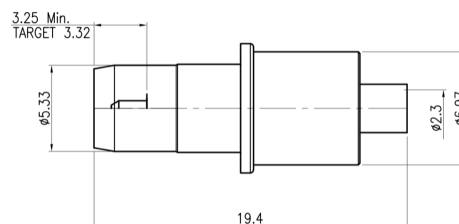
DC to 18GHz



Male Contact Plug Connectors for $\varnothing 0.141''$

Part # - PMM11B-A29G01

DC to 18GHz



Male Contact Plug Connectors for LMR195/RG58

Part # - PMM11B-A06G01

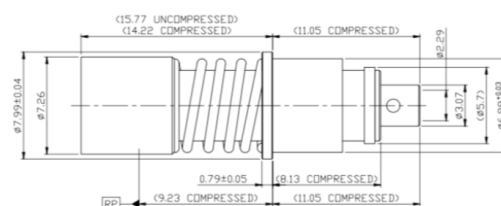
DC to 6GHz



Female Contact Socket Connectors for $\varnothing 0.085''$

Part # - PMF11C-A28G01

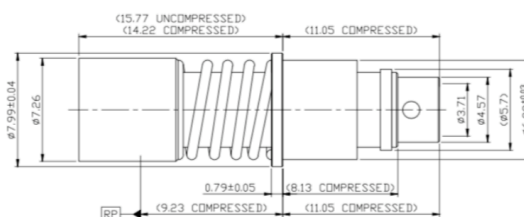
DC to 18GHz



Female Contact Socket Connectors for $\varnothing 0.141''$

Part # - PMM11C-A29G01

DC to 18GHz

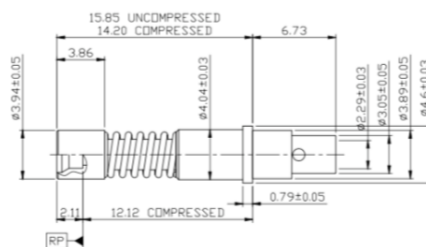


SMPM CABLE CONNECTORS FOR D38999

Male Contact Socket Connectors for $\varnothing 0.085''$

Part # - PMM13C-A28G01

DC to 27GHz



Female Contact Plug Connectors for $\varnothing 0.085''$

Part # - PMF13C-A28G01

DC to 27GHz

