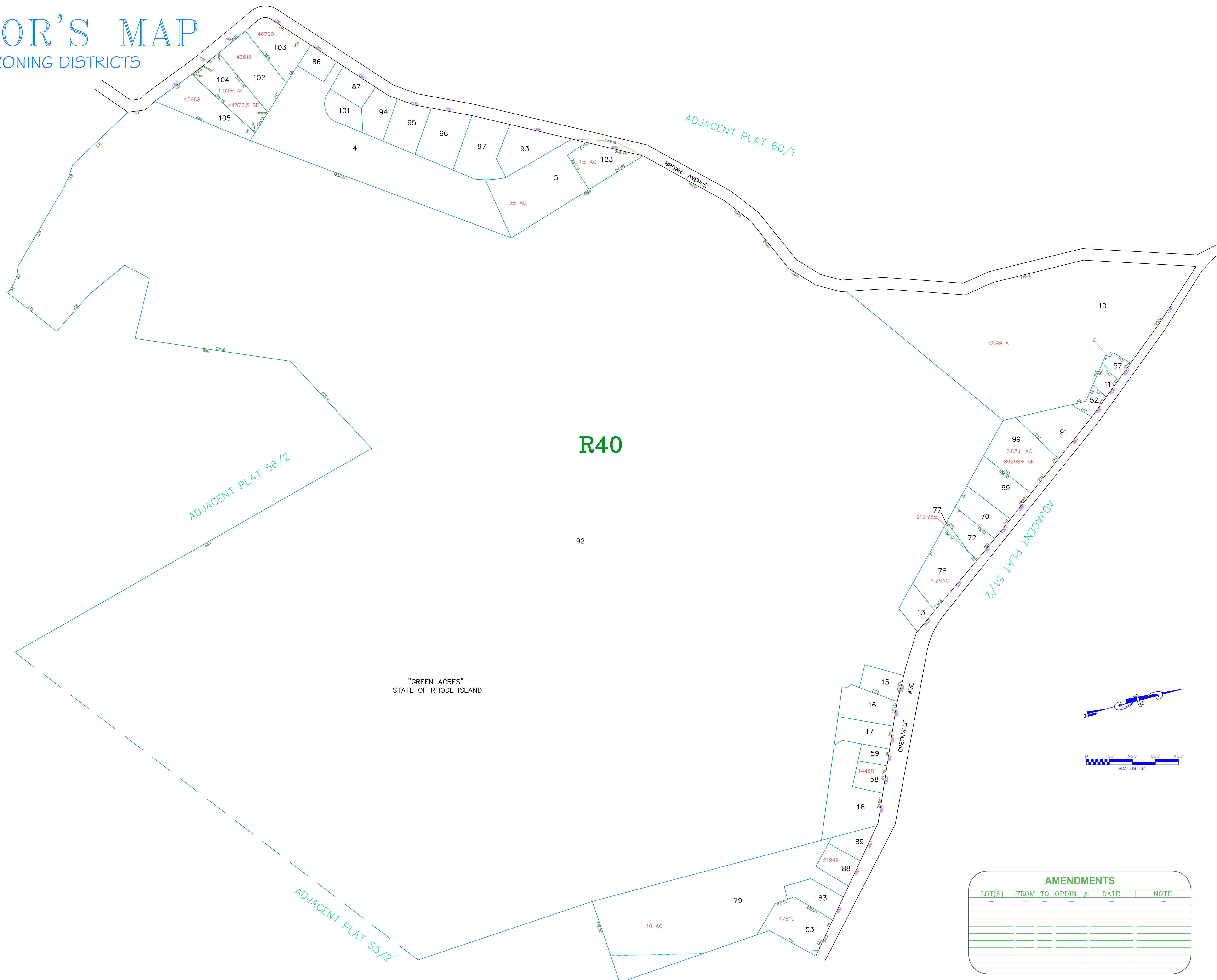


ASSESSOR'S MAP

SHOWING ZONING DISTRICTS



"GREEN ACRES"
STATE OF RHODE ISLAND

AMENDMENTS				
LOT(S)	FROM TO	ORDIN. #	DATE	NOTE

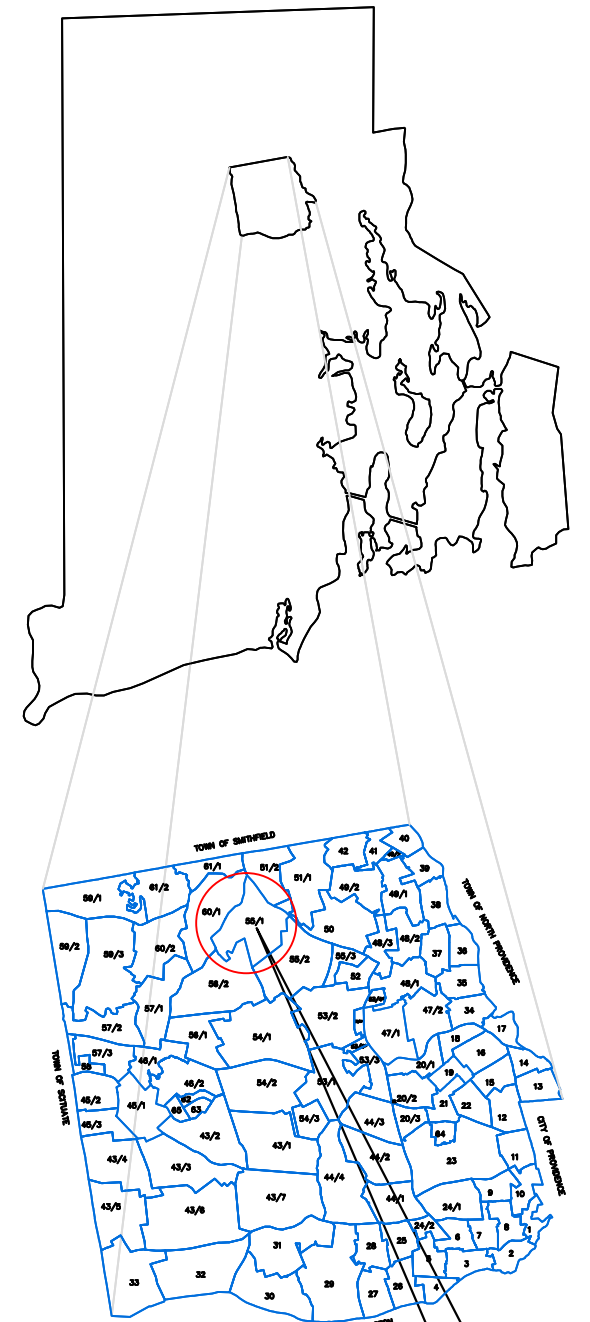
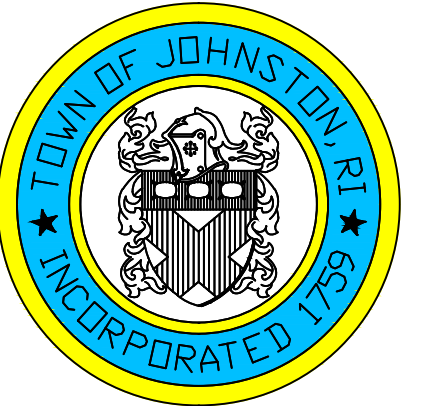
Assessor's Plat Number

55/1

STATE OF RHODE ISLAND
TOWN OF JOHNSTON

PROVIDENCE COUNTY
INCORPORATED 1759

ASSESSOR'S OFFICE
1385 HARTFORD AVENUE
JOHNSTON, RHODE ISLAND
02919



PLAT INDEX
AREA

Scale: 1:200

Revised By: Benjamin Ng

Last updated: January 05, 2015

Date printed: January 04, 2016

For copies of plat maps, please go to the DPW at 100 Irons Avenue Johnston Rhode Island. Thank you.

NOTE: This map was prepared for the use of the Town of Johnston for assessment and illustrative purposes only. It does not represent a survey of the premises. No liability is assumed as to the sufficiency or accuracy of the data delineated hereon.