

4

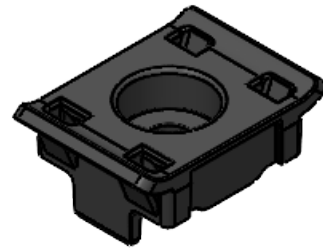
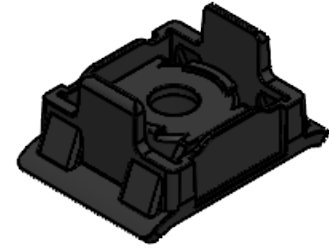
3

2

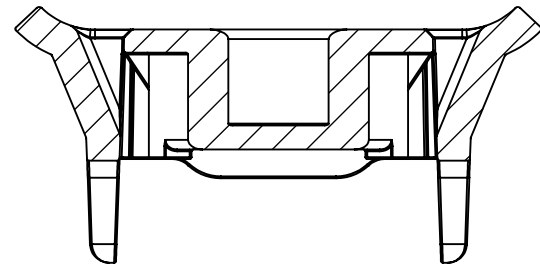
1

- 1. CAD generated drawing - Do not update manually. This drawing to be used for reference only. Detailed model information is available from SolidWorks 3D files.
- 2. Decimal tolerances .X = ±.1 .XX = ±.01 .XXX = ±.005 unless noted.
- 3. Break all sharp edges to .01" unless noted.
- 4. Parts to have minimal burrs, sink marks and flash.
- 5. Material- Polypropylene (20% GF)
- 6. Color- Black.
- 7. EDM finish on all outer surfaces. No texture required on internal surfaces.

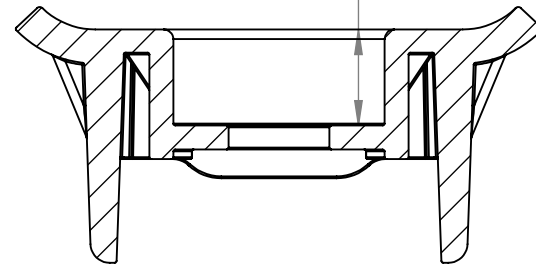
REVISIONS				
ZONE	REV.	DESCRIPTION	DATE	APPROVED



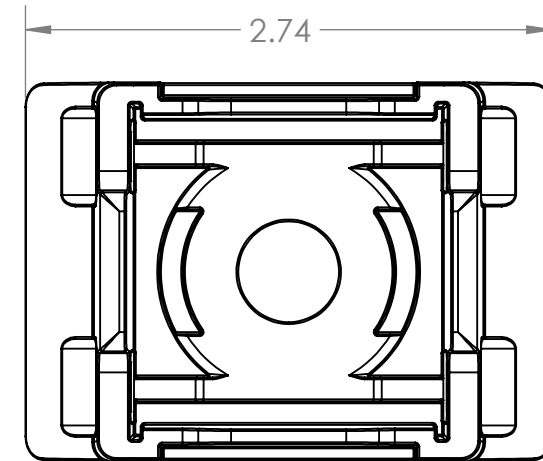
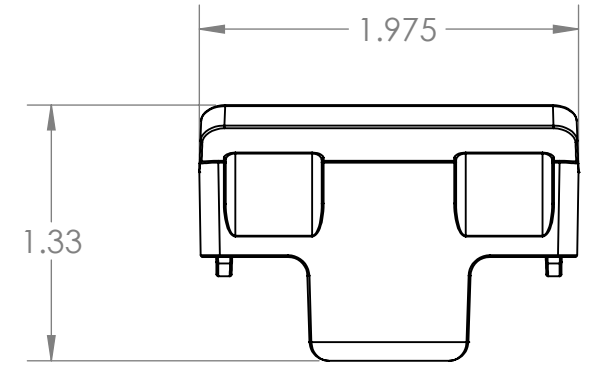
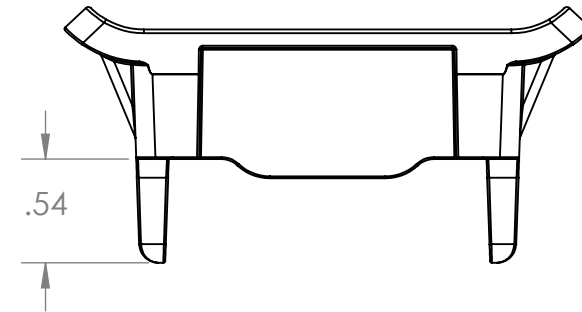
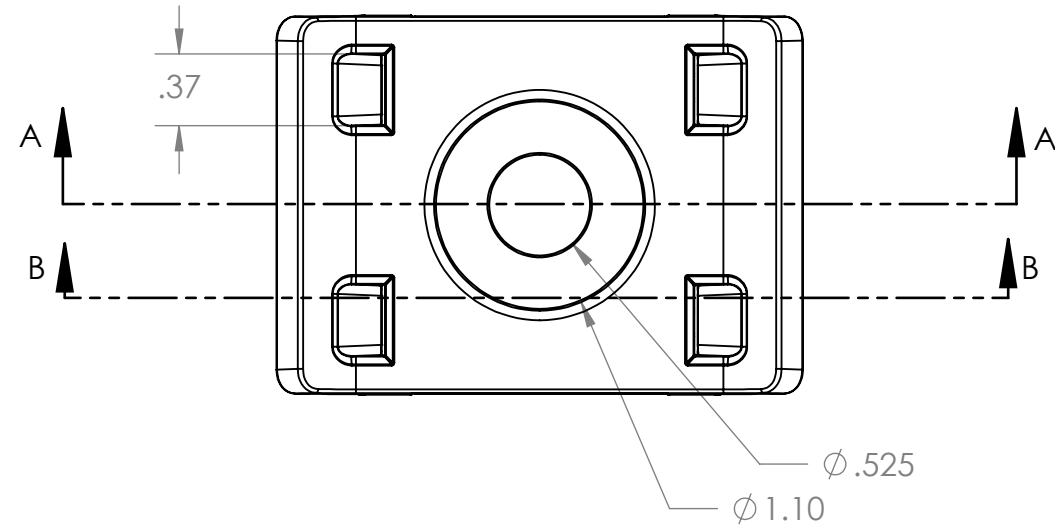
Aprox. Volume 1.9 cubic inches



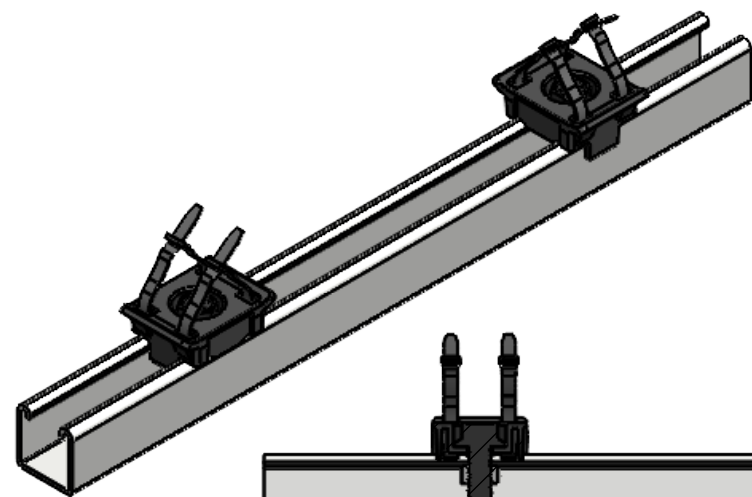
SECTION B-B



SECTION A-A



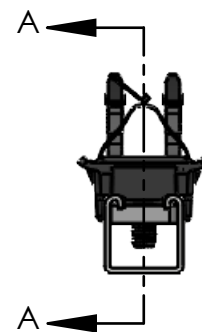
90 Degree Adapter for PCS-HD PolySaddle used on Strut Stanchions



Strut Adapter



SECTION A-A
SCALE 1 : 4



PROPRIETARY AND CONFIDENTIAL

SIZE B	DWG. NO. Strut Adapter Clip	
SCALE: 1:1	DATE: 2-14-2022	

4

3

2

1

B

B

A

A