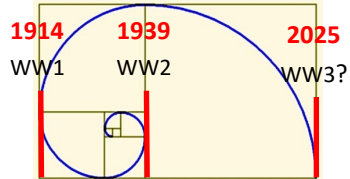


ECONOMIC COLLAPSES - USA

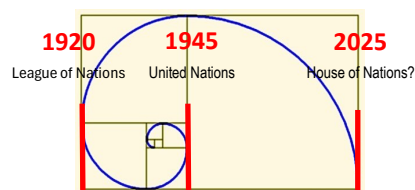
IN PHI RATIO PATTERNS OF TIME

The purpose of this Chart is to illustrate that based on one's Theory of the Phi Ratio being a Pattern of 'GOD's Signature', it can be applied to the Collapses of Economies. In this case, that of the Financial Meltdown of the USA. One theorizes that by knowing 2 Events on a Timeline, the 3rd Event will follow, approximately. One has applied this Phi Ratio Pattern to predict when World War 3 is to occur. This in turn will also follow how the World Orders after the World Wars have ensued and will again be based on the Phi Ratio Pattern Theory. Applying this Principle to Biblical Prophecy, one theorizes that Events such as when the 3rd Temple in Israel is to be built, for example, can be ascertained. This Phi Ratio Pattern is seen in Creation and was the Cycle observed in the 3 Series of Blood Moon Tetrad. One has taken the Chart, plotting the Recession Odds, based on Federal Reserve Data for the USA. It exemplifies this Phi Ratio Pattern. If what the Triangulation is suggesting, this coming Recession will be a Depression.

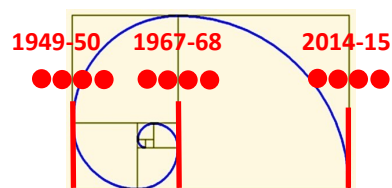
WORLD WARS



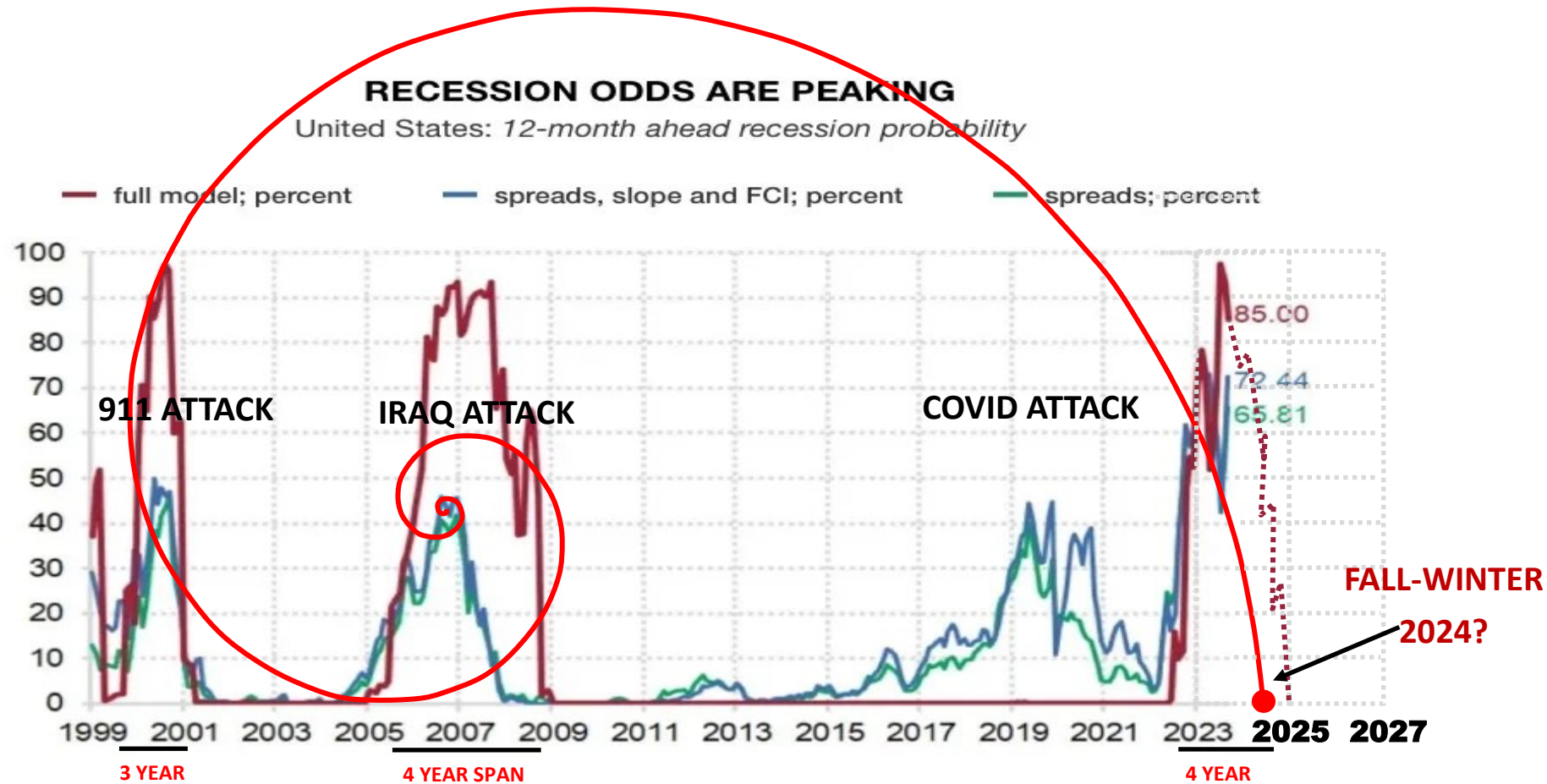
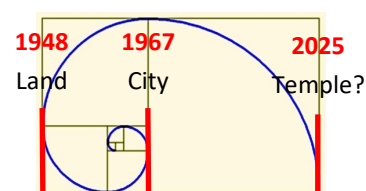
WORLD ORDERS



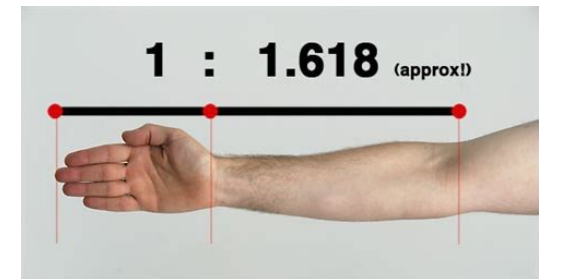
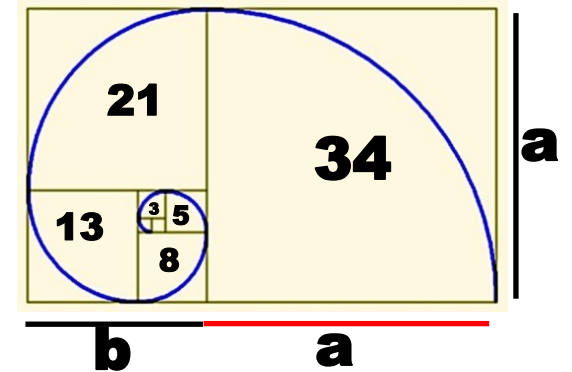
BLOOD MOON TETRADS



ISRAEL' REDEMPTION

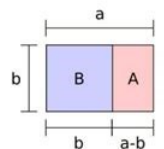


Source: businessinsider.com/recession-outlook-financial-crisis-economy-federal-reserve-yield-curve-rosenberg-2024-2



Golden Ratio Phi Φ

1 : 1.618



* Fibonacci's series

1	1	2	3	5	8	13	21
1/1 = 1	3/2 = 1.5	8/5 = 1.6	21/13 = 1.615...				
2/1 = 2	5/3 = 1.666...	13/8 = 1.625					



$$a+b/a = a/b = 1.618...$$