



December 1, 2020 Update

Hope everyone had a wonderful Thanksgiving and looking forward to a Merry Christmas!

We have some good news:

I believe I mentioned we were working on **two posters** to accompany the history book. Those posters are done and being printed! I have attached links to them below. One poster, a **special map** drawn for us by **Erik Irtenkauf**, showing historical locations in Esmont and Porters, is also page xvi in the history book. The second poster, done by **Dave Johnson**, shows **historic buildings** in Esmont, present and no longer present, along with **two very important men** in Esmont's history - **B.F. Yancey and Henry Lane**. The posters are standard sizes so framing will be easy. The map is 11x17, the history is 18x24.

The posters are free, made possible by the **Albemarle County Department of Equity & Inclusion**. If you decide you want us to mail you the posters, please send me a check, made out to **Friends of Esmont*** in the amount of **\$5** to cover mailing costs. Be sure your name and address are on the check. If you decide to donate to Friends of Esmont in addition to the \$5, I will send back to you an IRS Tax Deduction Receipt for the amount over \$5.

*Friends of Esmont
210 Tenth Street, NE #301
Charlottesville, VA 22902

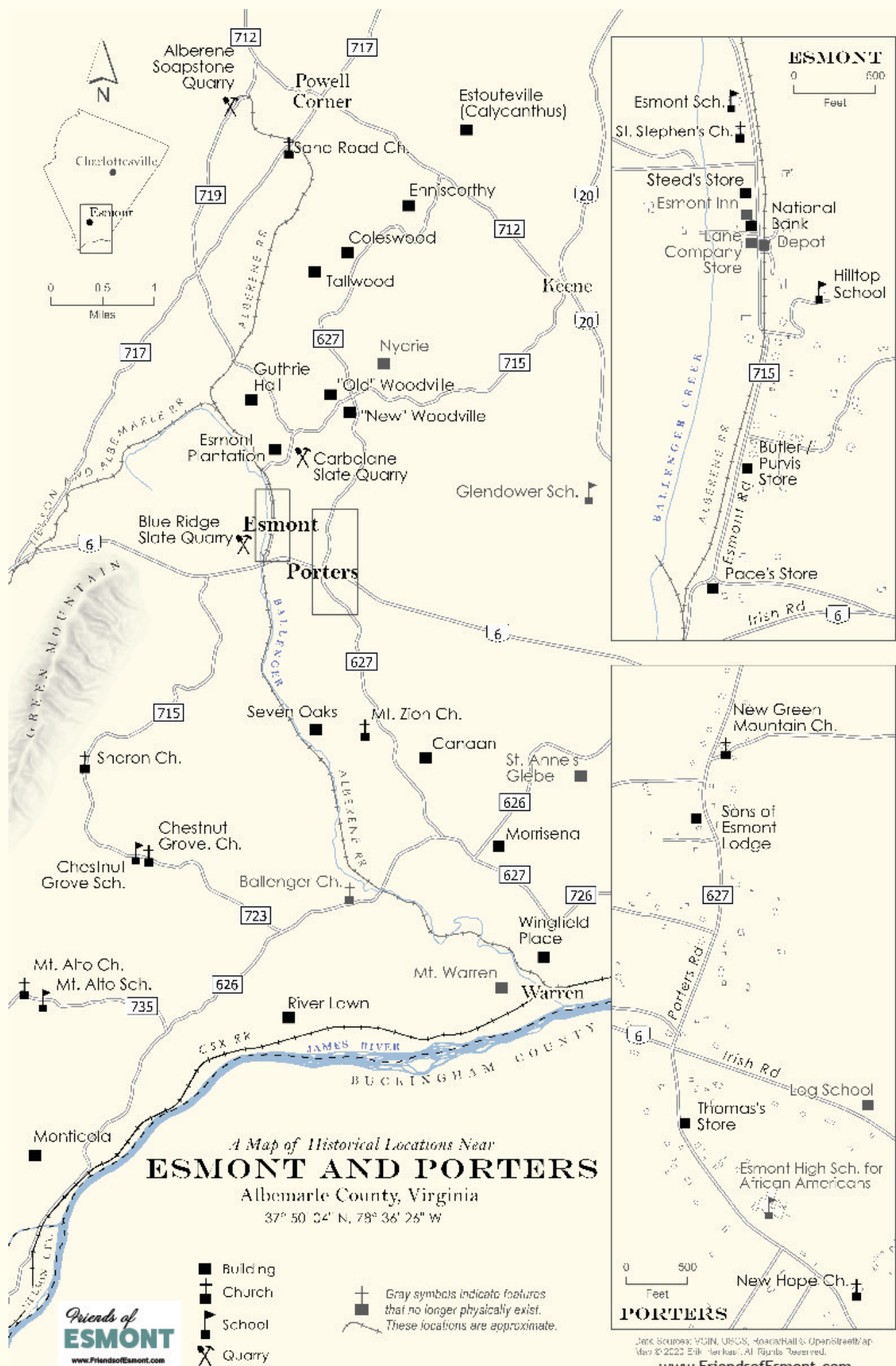
Below is a link to a news clip we just did on **NBC Channel 29 in Charlottesville** introducing the history book. This link, along with information on ordering the book, visit the **Friends of Esmont website**:

<http://www.friendsofesmont.com/esmont-history-book.html>

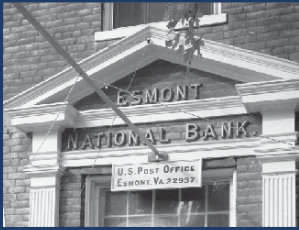
<https://www.nbc29.com/video/2020/11/30/friends-esmontwvir/>

Contact me with comments/questions.

Peggy



Esmont National Bank
Built in 1902 by the Lanes the busiest of these national banks in the county. The bank closed in 1933. The building later became the Esmont Post Office and remains so today.
Garth Groff/Charles Arnold



Esmont Inn
Built by Henry Lane around 1906 to provide lodging to Esmont visitors, later converted to a residence for H.P. McCary, President of the Esmont Bank, and others. The building burned December 19, 1963.
Postcard courtesy of Robert Thayer



Lane Headquarters Building & Commissary
Built across from the depot was the location of several general stores over the years, unfortunately burning to the ground in 1996.
Courtesy of Albemarle County Historic Preservation



Esmont Depot
The Depot serviced the Nelson and Albemarle RR (soapstone shortlines) carrying slate, pulpwood, RR ties and soapstone between Schuyler, Esmont, Albemarle and Warren. The building was dismantled in 1964.
Garth Groff/Charles Arnold

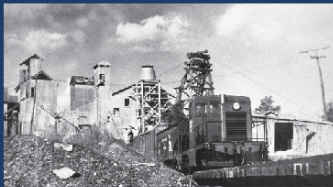
Esmont, Va.

A History in Pictures



Esmont Village right-left Steed's Store, Esmont Inn, Esmont National Bank/Post Office, next to that and obscured by trees is Lane Headquarters. Across the road sits the Esmont Depot and Douglas Store (white building). Courtesy of Shay Heath Booth

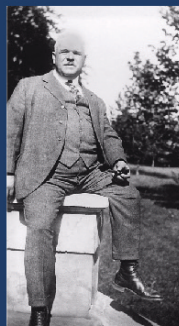
In the southwest corner of Virginia's Albemarle County, a county typically known most widely for being the home of Thomas Jefferson and James Monroe, a quiet community has been thriving far longer than those two men were president, much longer even than they were alive. This quiet place now goes by the name of Esmont.



Dust Plant
The Standard Slate Company / Blue Ridge Slate Company Quarried slate in Esmont from 1904 through 1957. The Quarry operation was known as "The Dust Plant" by locals because of a daily layer of slate dust cast upon the village. Photo by Charles N. Arnold



Esmont Quarry
The Esmont Quarry produced four varieties of slate: Blue Black/Dark Green/Light Green/Vanegated. A second and lesser quarry, known as Carbolane Quarry, across from Esmont Farm, produced a greenish blue slate and was abandoned after a few years of operation. 1904 photo Courtesy of VA Department of Mines, Minerals and Energy



Henry Lane
Owner of Esmont Farm, founder of Esmont Village, and builder of Nelson & Albemarle (soapstone shortlines) rail system in Esmont. Mr. Lane also built the Esmont Depot, Lane headquarters building and Esmont Inn. He was a founder of Altaville, VA., and member of the Lane Furniture family, makers of Lane cedar chests. Photo courtesy of Marie Combs Lane



Benjamin Franklin Yancey
Born in Howardville, educated at Hampton Institute, Benjamin Yancey returned to his native community where he worked tirelessly, in collaboration with others, to establish the Esmont Colored School. In 1960, 45 years after his death, the community named the new elementary school after him. Photo of BF Yancey portrait, courtesy of Dave Johnson