



Neighbors
working together
gets things done
and creates a win
for our community

NEWSLETTER

SEPTEMBER 2024

FUNDRAISING EVENT

Women's Club Fundraiser for Christmas Event

- The Women's Club will be hosting a fundraiser at the Pavilion, during the October 5th Community Garage Sale.
- We're asking for donations. Items and/or cash will be welcome.
- All proceeds will be donated to our annual Christmas Event.
- For more information, please contact:
Lynn Collins, lynn.collins@garygreene.com or
Ann Tatum, anntatum9203@gmail.com

FALL 2024 GARAGE SALE

Saturday, October 5 7:00 am to 3:00 pm

Make your plans to participate in the **COMMUNITY FALL GARAGE SALE**.

Woodwind Lakes, Rolling Fork and Terrace Brook will be having a garage sale on that date.

Pancake Breakfast Fundraiser!

A few months ago the Woodwind Lakes storage unit was broken into and almost all of our Christmas decorations were stolen. Yes, some lowlife Grinch tried to steal our Christmas. But the Christmas committee, with your help, is determined to not let that happen.



How can you help?

You can help us continue our biggest event of the year, **Christmas on the Lake**, by coming to our neighborhood *Pancake Breakfast fundraiser!*

Bring your family and let us cook for you. Come join your neighbors in the Pavilion and get a great breakfast.

Is there anyone who doesn't love pancakes?!?

Pancake Breakfast

DATE

Saturday, September 28, 2024

TIME

8:30 am-11:00 am

WHERE

The WWL Pavilion, 7523 Allegro Drive

MENU

Adult plate: 4 pancakes, 2 sausages with complimentary syrup and butter. Includes your choice of coffee, orange juice or water. **\$10**

Kids Plate (up to 12 years old): 2 pancakes, one sausage with complimentary syrup and butter. Includes either orange juice or water. **\$5**

DONATIONS ACCEPTED

So many of our decorations are gone and it would cost us more money than we have to replace them. We would appreciate your donations – used or new. Please feel free to bring extension cords (outdoor, any length), multi-plug adapters, plastic storage bins, lights (LED only please) warm white or multicolor.

We hope to see you there!

Questions about this fundraiser can be directed to Jeff Krahn at jdkrahn@yahoo.com.

Have you been thinking of having a whole-house generator installed?

Prolonged freezing weather, derechos, hurricanes – we have been hit by most of what Mother Nature can throw at us here in Southeast Texas. (Don't want to jinx things by mentioning one we haven't experienced yet – the dreaded "T" word: t0rNad0.) The damage to our property, trees, fences, even plumbing – not to mention our psyches – has been enormous. It sometimes seems like Houston endures the wrath of weather gods who have us in their crosshairs.

Having no electric power is also a big issue for homeowners.

Dealing with damage after a storm is a big enough headache, but living without power is one of the most inconvenient and troublesome areas of concern. The recent destructive storms have caused

many homeowners to finally look into the not insignificant costs of installing a whole house generator also known as a permanent auxiliary generator.

According to *Forbes* magazine, a whole-house generator is the most powerful type of home generator available. It's wired to your electric panel and turns on automatically when you lose power, so your entire home stays online if you have the right size. In contrast to a portable generator, a whole house generator will power many more appliances for as long as you can provide it with fuel – natural gas or propane.

You've decided to get a permanent generator, now what?

Woodwind Lakes residents are allowed to install these kinds of generators, but need

to follow certain guidelines. These can be found by clicking on the link under the **ARCHITECTURAL GUIDELINES** tab on our home page:

<http://www.woodwindlakeshoa.com/generator-installation-guidelines2.html>

This document (*see box below*) gives the requirements that must be met for proper installation. An application also needs to be submitted for approval through the normal process for an Exterior Modification. This can be found by clicking this link to the Crest Management web site.



EXTERIOR MODIFICATIONS

Steps you need to take if you plan on having a whole-house generator installed

- 1 Confirm with your installer that the requirements stated in the Guidelines (below) will be followed.
- 2 Fill out an Exterior Modification form and submit it for approval before beginning the installation.

Text of the Guidelines from the Woodwind Lakes web site:

Permanent Auxiliary Generator Guidelines

Auxiliary generators are to be used as an emergency source of electrical power not the primary source of power. Because an internal combustion engine is involved, certain precautions must be observed in the use and installation. The preferred location of the generator is in the back yard of the residence, not visible from the front of the home. The back of the generator must be located at least 18 inches from the home, no part of the cabinet can be closer than 6 feet from any operating windows or doors, the cabinet must be at least 3 feet from the side property line and the top of the generator must be at least 5 feet minimum distance from any structure, overhang or projection from a wall. Any foliage that is used to block the view to the generator must be located at least 3 feet away from the generator. The generator requires airflow to operate, therefore there must be a

minimum of 3 feet open space on each end (Air Intake and Exhaust) of the generator. This space must be clear of all obstructions to the airflow. Generators should be permanently attached to a 4 inch concrete slab. Homeowner is responsible to ensure the generator meets any and all installation restrictions of the manufacturer.

Generators must be maintained to operate and remain safe. Most manufacturers recommend annual maintenance and periodic exercise of the equipment. Exercise of the equipment should be conducted during the daytime to limit disturbing adjacent homes. It is highly recommended that carbon monoxide detectors be installed in the home.

IMPORTANT When applying for approval to install a permanent generator, please submit a site plan with dimensions showing compliance with guidelines.

SPONSORED BY THE WOODWIND LAKES WOMEN'S CLUB

BLOOD DRIVE – OCTOBER 21

The Gulf Coast Regional Blood Center mobile donation coach will be in the Family Pool parking lot from 4:00 – 8:00 PM on Monday, October 21, 2024.

It's easy to sign up for an appointment by clicking on this link.

https://www.commitforlife.org/donor/schedules/drive_schedule/390746

Or, on your phone, use this QR code.



Gulf Coast Regional Blood Center would like to remind us of the important role that blood donations play in our healthcare system. Every day, blood donors in our community and around the world make a profound impact on the lives of patients who need transfusions for surgeries, cancer treatments, chronic illnesses, and traumatic injuries.



*Appointments preferred.
Walk-ins always welcome.*

Houston has been especially impacted this year

This year, our community has faced many challenges, including unprecedented weather conditions and severe floods, which led to donor centers' temporary closure and several blood drives' cancellations. These disruptions and the typical summer decline in donations as people go on vacation and schools are out have impacted our local blood supply.

Maintaining a stable blood supply is essential to ensure we are prepared for emergencies such as natural disasters, accidents, or medical treatments requiring transfusions. We never know what the future will bring, and having a stable blood supply is vital for our community's health. Gulf Coast Regional Blood Center is the sole provider of blood and blood components 24 hours a day, 7 days a week to more than 170 hospitals and

healthcare facilities in a 26-county area in the Texas Gulf Coast region where the need for blood is constant. Every day, the Center needs to collect 1,000 blood donations to maintain the area hospitals they serve.

The need is continuous

Gulf Coast Regional Blood Center would also like to remind everyone of the continuing and perpetual need for blood donors.

Those feeling healthy can schedule an appointment and make regular donations to ensure a stable blood supply. Visit [giveblood.org](https://www.giveblood.org) to find a convenient location. The donation process is quick and easy and can be done at any of the 18 donor centers and mobile blood drives in the Greater Houston, Brazos Valley, and East Texas Areas.

Gulf Coast Regional Blood Center is a nonprofit organization and is accredited by the Food and Drug Administration.

Together, we can make a difference in our community and help save lives!

Donors will receive a FREE T-shirt and a coupon for a FREE pint at Saint Arnold Brewery (21+).



THE WOMEN'S CLUB

Season Kick-Off Meet & Greet

Tuesday, September 17, 2018 at 10:00 am

9134 Brahms Lane — Home of Merrell Greene

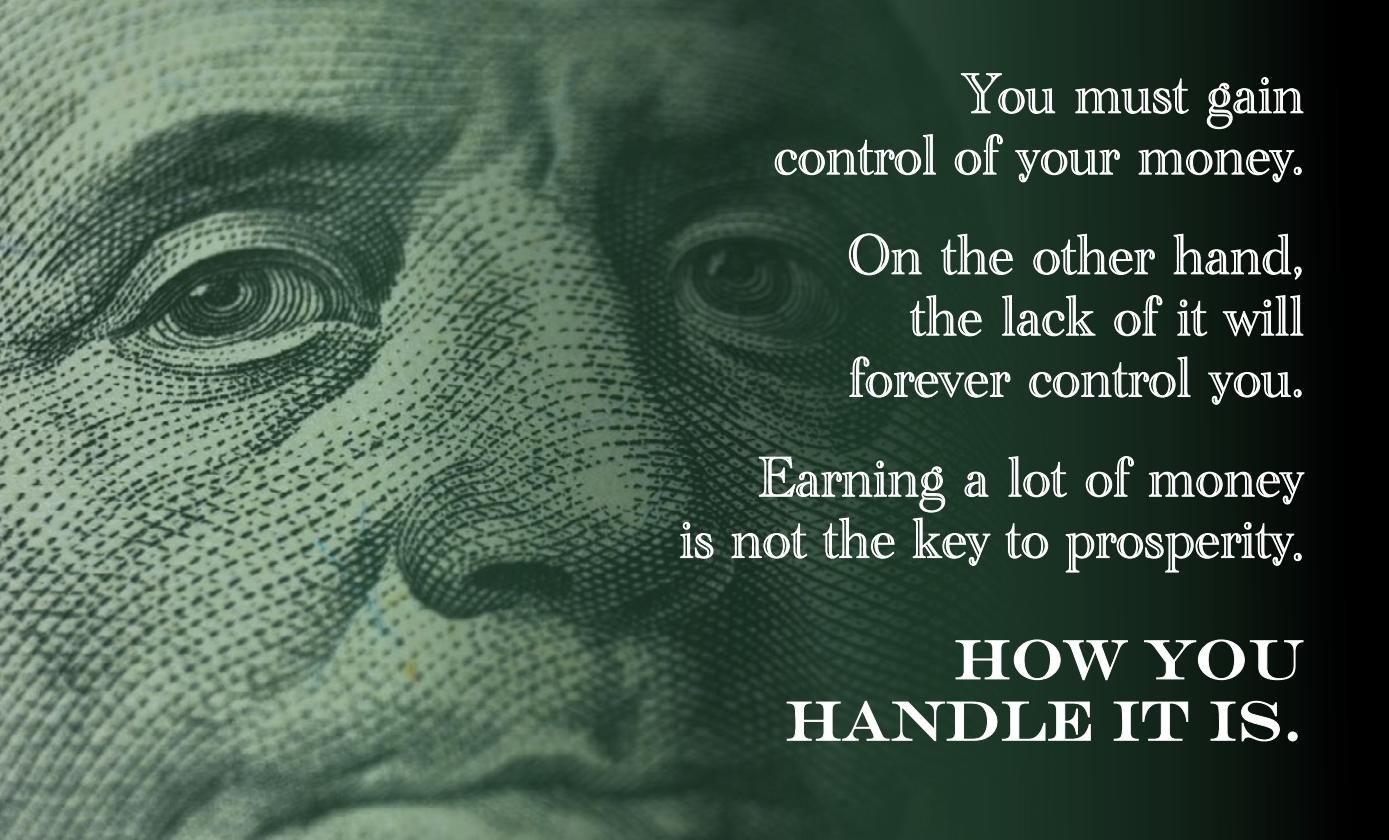
Non-members are welcome to join in the festivities!

Food, fun and gifts for all!!!

For more information, please contact Ann Tatum:

anntatum9203@gmail.com | (713) 724-0998

Hope we see you there!



You must gain
control of your money.

On the other hand,
the lack of it will
forever control you.

Earning a lot of money
is not the key to prosperity.

**HOW YOU
HANDLE IT IS.**

Guinea paper wasps

Wizzie Brown, Texas AgriLife Extension Service Program Specialist

Guinea paper wasps, *Polistes exclamans*, are one of the more common paper wasps seen in Texas. They are reddish-brown wasps with yellow markings, about $\frac{3}{4}$ inch in length with smoky wings. Antennae are tipped with orangish-yellow. The base of the abdomen where it joins to the thorax is black. Depending on the temperature of where you are in Texas, it is possible to see the wasps year-round.

About those papery nests

Paper wasps make a nest out of chewed wood fiber collected from plant stems, fences or other wooden structures. The nest is usually a single layer of cells, open faced and hangs from a single filament. The nest is typically constructed in protected areas such as under the eaves of homes, in shrubbery, mailboxes or on fences.

Mated queens overwinter in small aggregations in sheltered locations. They emerge early in the year, often January and February and build a small nest in which to lay eggs. Colonies grow in physical size as well as number of wasps as time progresses.

Colonies have three castes: queen, worker and males. Workers typically live about 15 days while queens can live up to three months. Males are produced when need for mating. There is little to distinguish between queen and worker

and workers can take over egg laying duties if the queen leaves to establish a satellite nest or dies. Satellite nests help to ensure colony survival if the original nest is parasitized or predated upon. Older workers may also establish satellite colonies as they have more developed ovaries and once mated, can begin to lay eggs.

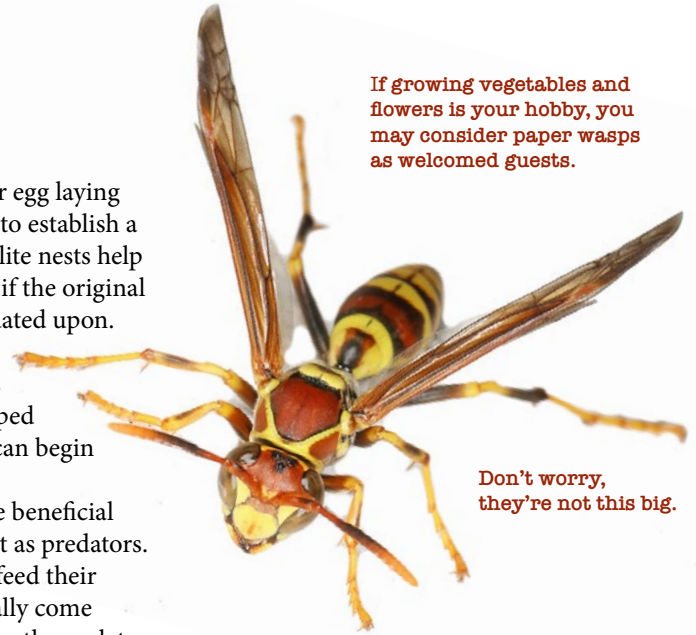
Guinea paper wasps are beneficial not only as pollinators but as predators. They hunt caterpillars to feed their young. Caterpillars typically come from snout moths, tiger moths, owlet moths, prominent moths, sphinx moths, prominent moths, skippers and white and sulphur butterflies.

It's usually fine to leave them alone

While Guinea wasps are unaggressive away from the nest, they will defend their home and offspring. If the nest is in an area where a stinging incidence is unlikely, leave it alone to allow the wasps to benefit your garden. If the nest is built in an area where people or companion animals may get stung – in a mailbox, on playground equipment, etc. – then it is recommended to manage the wasps and then remove the nest.

Early in the season, when nests are just being started by founding females, it may be possible to discourage paper wasps to nest in a certain area by knocking

If growing vegetables and flowers is your hobby, you may consider paper wasps as welcomed guests.



Don't worry, they're not this big.

down the nest repeatedly. This is not recommended when the nest is larger and contains multiple wasps.

For more information or help with identification, contact Wizzie Brown, Texas AgriLife Extension Serv. Program Specialist at ebrown@ag.tamu.edu.

This work is supported in part by the Crop Protection and Pest Management, Extension Implementation Program [award no. 2021- 70006-35347/project accession no. 1027036] from the United States Department of Agriculture (USDA) National Institute of Food and Agriculture. The information given herein is for educational purposes only. Reference to commercial products or trade names is made with the understanding that no discrimination is intended and no endorsement by Texas AgriLife Extension Service or the Texas AgriLife Research is implied.

Extension programs serve people of all ages regardless of socioeconomic level, race, color, sex, religion, disability, or national origin.

IMPORTANT POLLINATORS

The queen lays an egg into the underside of each hexagonal papery cell of the comb, which hatches and develops into a grub-like wasp larva. Paper wasps catch lots of caterpillars and other small insects to feed the larvae, but the adult paper wasps mainly feed on nectar, just like bees, making them important pollinators in the garden.

From <https://deepgreenpermaculture.com>



Paper wasps are known for their open-combed, umbrella-shaped hanging nests.

SELF DEFENSE TIPS FROM SILVERBACK SELF DEFENSE

Defending yourself in a dangerous situation

Recognizing danger before it escalates can significantly enhance your personal safety and give you the confidence to navigate your surroundings more securely.

Common Signs of Potential Threats

UNUSUAL BEHAVIOR

- Individuals acting nervously or out of place.
- Rapid, darting eye movements or those who seem overly focused on specific targets (like your possessions).

ENVIRONMENTAL CHANGES

- Sudden changes in noise levels, like a sudden hushed silence.
- Vehicles parked in unusual spots or idling for no apparent reason.

BODY LANGUAGE CLUES

- People who are following you closely or matching your pace.
- Individuals who seem to be fidgeting with hidden objects (e.g., in their pockets or bags).

SUSPICIOUS CLOTHING

- People wearing heavy or inappropriate clothing for the weather (e.g., a jacket or hoodie on a hot day) as it might be used to conceal something.
- Frequent adjustments to clothing that could indicate hiding objects or weapons.

Techniques to Avoid Potential Threats

STAY IN WELL-LIT, POPULATED AREAS

- Dangerous situations are less likely to occur in places where there are witnesses.

KEEP PERSONAL SPACE

- Maintain a safe distance from people acting suspiciously and avoid confined spaces where your movement is restricted.

HAVE AN EXIT STRATEGY

- Always have a plan for a quick escape if you sense danger. Identify exits and clear paths in new environments.

USE TECHNOLOGY WISELY

- Share your location with trusted friends or family, especially if you're going to an unfamiliar place.
- Avoid displaying valuable items like phones and wallets openly.

Trust Your Intuition

Your instincts are a powerful tool. If something feels off, don't dismiss it. It's better to be cautious and wrong than to ignore your gut and face potential harm.

A Real-Life Scenario

Earlier this year, we received a call from a mom who shared an incident involving her teenage daughter at The Woodlands Mall. The young woman noticed a man acting suspiciously and following her. She wisely contacted mall security, who escorted her to her car and confronted the man. Thanks to her situational awareness, what could have been a dangerous situation was successfully averted. Simple decisions like these can make all the difference. This young woman attended one of our seminars to ensure that if something similar ever happens again, she'll have the skills to protect herself further.

Join Us

Find out more about private training or one of our group seminars and learn more ways to protect yourself.
Stay safe and prepared!

"It's better to know what we teach and not need it, than to need what we teach and not know it."



September Yard of the Month winners

SECTION 1



9107 BRAHMS LANE

SECTION 2



7926 SCHERZO LANE

SECTION 3



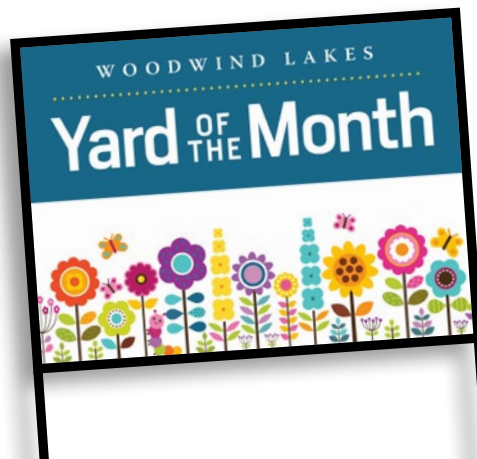
7814 ADAGIO AVENUE

SECTION 4



8023 CLARION WAY

Congratulations!



MONARCH LANDSCAPE MANAGEMENT

Woodwind Lakes Monthly Services Update

**August completed events**

- Irrigation inspection (comp 8/28)
- Site audit
- Debris cleanup (comp 8/10)
- Shrub and groundcover fertilization w/InD (comp 8/3)

September upcoming events

- Irrigation inspection (scheduled 9/1)
- Site audit
- Turf fertilization w/PM Fall (TBS)

Details we are focusing on this month

- Natural areas stick pickup from storms
- Debris fine pick up on setbacks and esplanades
- Trim for layering and sight lines on property





HARRIS COUNTY CONSTABLE, PRECINCT 4

CONSTABLE MARK HERMAN

"Proudly Serving the Citizens of Precinct 4"

6831 Cypresswood Drive ★ Spring, Texas 77379 ★ (281) 376-3472 ★ www.ConstablePct4.com

Monthly Contract Stats

WOODWIND LAKES

For August 2024

Categories

Burglary Habitation: 0	Burglary Vehicle: 0	Theft Habitation: 0
Theft Vehicle: 0	Theft Other: 0	Robbery: 0
Assault: 0	Sexual Assault: 0	Criminal Mischief: 0
Disturbance Family: 0	Disturbance Juvenile: 1	Disturbance Other: 0
Alarms: 0	Suspicious Vehicles: 0	Suspicious Persons: 1
Runaways: 0	Phone Harrassment: 0	Other Calls: 42

Detailed Statistics By Deputy

Unit Number	Contract Calls	District Reports	Arrests Taken	Felony Arrests	Misd Arrests	Tickets Issued	Recovered Property	Charges Filed	Mileage Driven	Days Worked
200	0	33	0	0	0	24	0	0	978	11
P60	3	4	0	0	0	0	0	0	63	1
W15	63	47	3	0	2	28	0	2	963	21
W56	6	0	0	0	0	1	0	0	95	5
TOTAL	72	84	3	0	2	53	0	2	2099	38

Summary of Events

OTHER CALLS:

9200 SYMPHONIC LN- A known male reportee stated that a known female who appeared to be under the influence of an unknown substance, was causing a disturbance at his residence and threaten to cause harm to herself. The female was later detained and transported to a local hospital for mental health evaluation.

8000 SONATA CT-A known male complainant stated that he lost his wallet containing his personal information, while he was out making a purchase at a local grocery store.

7500 ALLEGRO DR- A known male complainant stated that while they were at the tennis courts, an unknown male suspect got into a verbal altercation with him and other individuals and then made verbal threats to cause them bodily harm.

Alarms:

Deputies responded to 0 residential alarms that were all cleared as false or cancelled.

Suspicious Vehicles:

Deputies responded to a 0 suspicious vehicle calls that were all cleared as GOA or information.

Suspicious Persons:

Deputies responded to 1 suspicious person calls that were all cleared as GOA or information.

Deputies conducted multiple traffic stops and issued multiple citations within the contract reducing the possibility of accidents.

Deputies conducted multiple contract, neighborhood and business checks within the contract increasing visibility while performing regular patrol duties.

Deputies responded to 42 other calls within the contract including:

Motor Vehicle Accidents	Follow Up Investigations	Stranded Motorist
Animal Humane	Information Calls	Traffic Hazard
Child Custody Disputes	Meet The Officer	Unknown Medical Emergency
Domestic Preventions	Lost Found Property	Abandoned/Speeding Vehicles
D.W.I.	Sex Offender Verification	Welfare Checks