

A ID	B OD	C THK.	D HEIGHT	E JOINT HT.	F SPACING
2438	2895	229	305	152	305
2438	2895	229	457	152	305
2438	2895	229	610	152	305
2438	2895	229	914	152	305
2438	2895	229	1219	152	305
2438	2895	229	1524	152	305

AVAILABLE HEIGHTS	QTY. OF RUNGS	STARCON LIFTING PINS	WEIGHTS [kg]
0.31m [1']	1	8T	1316
0.46m [1.5']	2	8T	1986
0.61m [2']	2	8T	2658
0.91m [3']	3	8T	4001
1.22m [4']	4	8T	5343
1.52m [5']	5	8T	6686

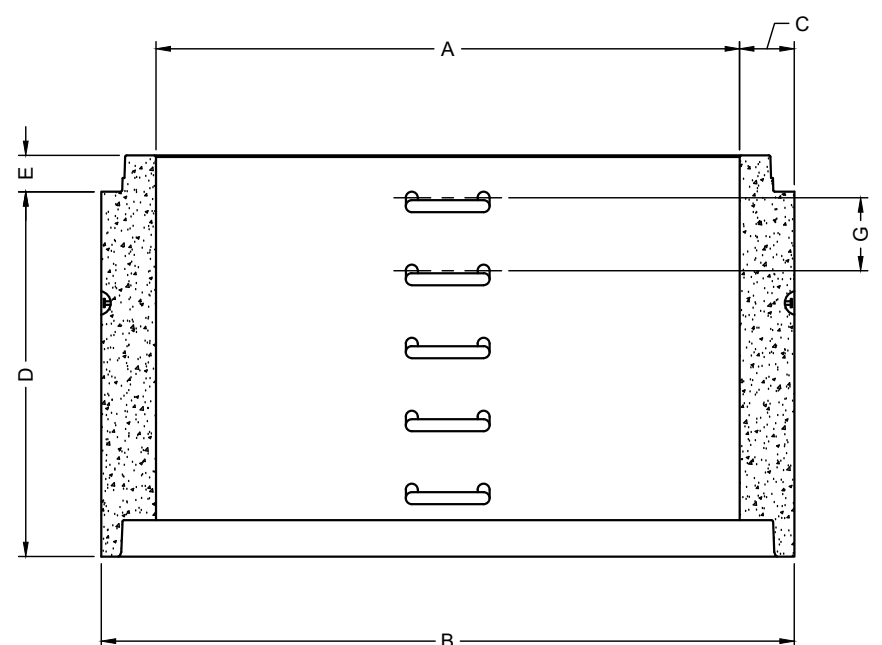
RELEASE	MPa	20
28 DAY:	MPa	35
AIR CONTENT:		6% ± 1%
WEIGHT:	kg	VOLUME m <sup>3</sup>
TYPE:		kg/m <sup>3</sup> 2402

STRAIN		mm	-
		mm	-
		MPa	-

MARK	DESCRIPTION	QTY.



ISOMETRIC VIEW  
NTS



ELEVATION  
VIEW

- NOTES:
- 1) CEMENT : PORTLAND CEMENT TYPE 50(HS)
  - 2) Max AGGREGATE SIZE: 20mm
  - 3) 28 DAY STRENGTH: MIN. 35 MPa.
  - 4) ENTRAINED AIR: 6%±1%
  - 5) REINFORCING TO CAN/CSA-G30.18 400 MPa
  - 6) ALL UNITS ARE IN MILLIMETERS UNLESS OTHERWISE NOTED.

DWG. NO.	REFERENCE	NO.:	REVISION DESCRIPTION	BY	APP'D	DATE	DRW BY	SWM	2018/11/21
-	-	A	ISSUED PLAN	-	-	2018/11/21	CH'K BY	-	-
-	-	-	-	-	-	-	AP'D BY	-	-
-	-	-	-	-	-	-	AP'D BY	-	-
-	-	-	-	-	-	-	AP'D BY	-	-
-	-	-	-	-	-	-	SCALE: NTS	PAGE: 1 OF 1	

TITLE:	2400 RISER DETAIL DRAWING	
PROJECT NO.:	JOB NO.:	
DRAWING NO.:	SVI-MR-2400-01A	