

NEW CONTRA-ANGLE

NOVA

Drawing on 60 years of expertise, Bien-Air is on a constant quest for practical innovation, optimal ergonomics and extreme reliability. We believe that the quality and reliability of our instruments underpin the quality and precision of your work.

S W I S S  M A D E



SEE BEYOND

S W I S S  M A D E

BETTER VISIBILITY, IMPROVED ACCESSIBILITY.



From the moment we started designing the Nova handpiece,
we had one ambition – not to compromise...

thanks to the **small head**, the **slim handle**, its **light-weight design**,
its **low noise** level and its **extreme durability**, it is quite simply the
most advanced handpiece on the market.

The Nova's small head and slim handle enhance your field of vision and guarantee easier access to the back of the mouth.

The Nova has the **smallest head** and the **slimmest handle** in the entire Bien-Air handpiece range.



THE SMALLEST HEAD



NOVA / EV0.15

**AND THE SLIMMEST
HANDLE.***

THE LIGHTEST.*



The Nova's **stainless steel** construction makes it the lightest handpiece in the range. Its lightweight design improves the ergonomics and reduces wrist fatigue during day-to-day work.

Right from the initial sketches, the Nova has been designed to overcome the challenges of a traditional handpiece. Its perfectly optimised gears, stainless steel construction and monobloc handle reduce both vibrations and the sound level for improved user comfort.



REDUCED VIBRATION.

The use of stainless steel
significantly reduces wear
on the handpiece and makes
it 4 times more resistant
to shocks.



**NOW IN
STAINLESS STEEL.**

4X
more
durable

Thanks to the new design,
the Nova offers double the service
life of the previous generation.

NOVA



SMOOTH AND VIBRATION FREE.

Cylcro gears are a gearing type used across many industries. Bien Air is the first to incorporate the technology into dentistry.



EXTENDED SERVICE LIFE.

PVD (physical vapor deposition) is technology used in many industries to decrease temperature fatigue on metals. Bien Air is the first to incorporate the technology into dentistry. We apply this to the chuck, which is the smallest mechanical component of any handpiece.



ENHANCED PATIENT PROTECTION.

Thanks to Cool Touch+ ceramic insulated push-button, the push button will not heat above human body temperature during operation if contact is made with soft tissue.

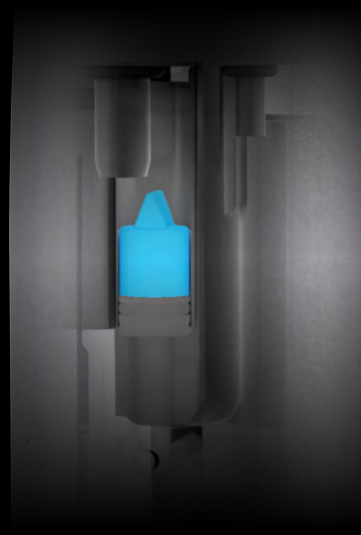
NEW DESIGN.

S W I S S  M A D E



PERFORMANCE UNCOMPROMISED.

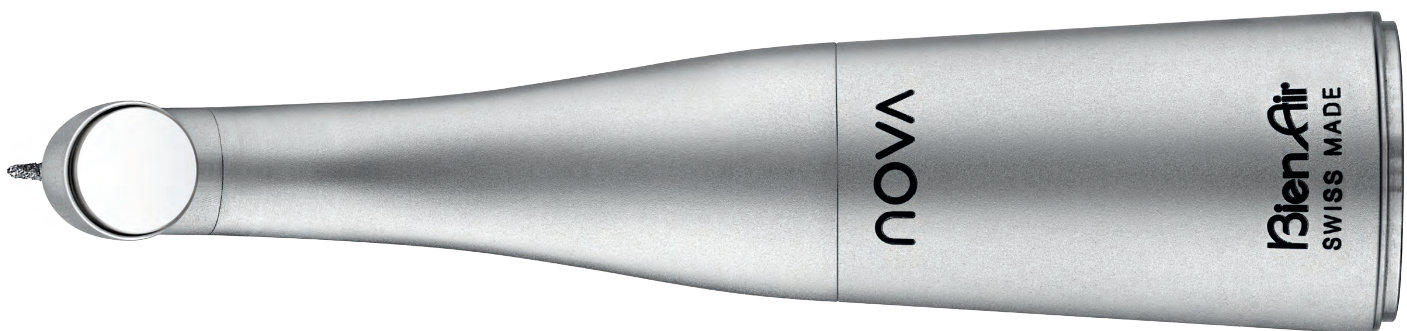
The only small head handpiece with 4 water sprays (**Accu-Spray Quattro Mix system**), the Small-head Nova can take on big jobs with both standard and short shank burs without over-heating the material being reduced.



MINIMIZE AEROSOL EXPOSURE.

Risks of cross contamination are reduced thanks to the **non-return valve** and the **Sealed Head protection**.

The only sterilizable anti retraction valve.
If you don't know why that is important,
look into it..





CA NOVA 1:5 L

- Small tapered head
Ø 6.3 mm 13.7 mm
- Stainless steel
- Shockproof head
- Push-button with Cooltouch+
heat-arresting technology
- Anti-retraction valve
- 2-year warranty

CA NOVA 1:5 L REF 1601139-001
CA NOVA 1:5 L MICRO-SERIES REF 1601138-001

CA NOVA 1:1 L

- Small tapered head
Ø 6.3 mm 12.9 mm
- Stainless steel
- Shockproof head
- Anti-retraction valve
- 2-year warranty

CA NOVA 1:1 L REF 1601137-001
CA NOVA 1:1 L MICRO-SERIES REF 1601136-001

WWW.BIENAIR.COM

S W I S S  M A D E

more information

