

ADDENDUM NO. 1

RE: ROSEDALE WATER PIPING REPLACEMENT
Elkhart Housing Authority
Elkhart, Indiana

DATE: February 28, 2025

TO: All Bidders

You are hereby directed to make the following changes in the Project Manual and/or Drawings of the subject job and each item shall become fully a part of the Construction Documents as if originally written and/or shown:

1. Find attached the Pre-Bid Walk-Thru Sign-In Sheet.
2. **SPECIFICATIONS; 00 21 50 PREVAILING WAGE REQUIREMENTS**; item A; the wage decision has been updated as follows (copy attached):

General Decision Number IN20250005
Modification Number 1, Dated 02/21/2025

3. **SPECIFICATIONS; 02 26 23 ASBESTOS INSPECTION REPORT**; has been added, along with the referenced Asbestos Inspection Report (see attached).

4. **DRAWINGS; Sheet No. M1.1:**

a. **CLARIFICATIONS:**

- 1) Contractor to connect to the existing main distribution in the Boiler Room in the horizontal runs at the upper elevation upstream of the first branch connection.



- 2) Contractor may, at their option, install new piping mains below the existing mains utilizing a spanning trapeze hanger. No piping is to be supported by existing piping.



- b. GENERAL MECHANICAL NOTES; add new Note 17 which reads:

17. CONTRACTOR TO PROVIDE ADDITIONAL SUPPORT TO EXISTING BOILER FEED RPZ AND PRV ASSEMBLY. PROVIDE NEW FLOOR-MOUNTED SUPPORTS AT BOTH ENDS OF THE HORIZONTAL ASSEMBLY.



END OF ADDENDUM NO. 1

All bidders must acknowledge receipt of this Addendum in their bid.

**PRE-BID WALK-THRU
SIGN-IN SHEET**

PROJECT: ROSEDALE WATER PIPING REPLACEMENT
Elkhart Housing Authority
Elkhart, Indiana

DATE/TIME: February 26, 2025
10:00 a.m. (Local Time)

LOCATION: Rosedale High-Rise
501 West Indiana Avenue
Elkhart, Indiana

NAME	COMPANY	PHONE / E-MAIL
Patrick Hess	Alliance Architects	Phone: (574) 288-2052 Email: phess@alliarch.com
Matt Bailey	H36 Services	Phone: 574-274-6556 Email: m Bailey@h36services.com
John Feeks	H36 Services	Phone: 574-339-1325 Email: jfeeks@h36services.com
Erik Mathawan	EHA	Phone: 574.361.8028 Email: ERIK.MATHAWAN@EHAI.ORG
Brad White	Alliance Architects	Phone: Email:
		Phone: Email:
		Phone: Email:
		Phone: Email:
		Phone: Email:
		Phone: Email:

"General Decision Number: IN20250005 02/21/2025

Superseded General Decision Number: IN20240005

State: Indiana

Construction Type: Building

Counties: Elkhart, Jasper, Kosciusko, Lagrange, Marshall, Newton, Pulaski and Starke Counties in Indiana.

LAGRANGE COUNTY

BUILDING CONSTRUCTION PROJECTS (does not include single family homes and apartments up to and including 4 stories).

Note: Contracts subject to the Davis-Bacon Act are generally required to pay at least the applicable minimum wage rate required under Executive Order 14026 or Executive Order 13658. Please note that these Executive Orders apply to covered contracts entered into by the federal government that are subject to the Davis-Bacon Act itself, but do not apply to contracts subject only to the Davis-Bacon Related Acts, including those set forth at 29 CFR 5.1(a)(1).

<p>If the contract is entered into on or after January 30, 2022, or the contract is renewed or extended (e.g., an option is exercised) on or after January 30, 2022:</p>	<p>. Executive Order 14026 generally applies to the contract. . The contractor must pay all covered workers at least \$17.75 per hour (or the applicable wage rate listed on this wage determination, if it is higher) for all hours spent performing on the contract in 2025.</p>
<p>If the contract was awarded on or between January 1, 2015 and January 29, 2022, and the contract is not renewed or extended on or after January 30, 2022:</p>	<p>. Executive Order 13658 generally applies to the contract. . The contractor must pay all covered workers at least \$13.30 per hour (or the applicable wage rate listed on this wage determination, if it is higher) for all hours spent performing on that contract in 2025.</p>

The applicable Executive Order minimum wage rate will be adjusted annually. If this contract is covered by one of the Executive Orders and a classification considered necessary for performance of work on the contract does not appear on this wage determination, the contractor must still submit a conformance request.

Additional information on contractor requirements and worker protections under the Executive Orders is available at

http://www.dol.gov/whd/govcontracts.

Modification Number	Publication Date
0	01/03/2025
1	02/21/2025

ASBE0017-008 06/01/2024

NEWTON COUNTY:

	Rates	Fringes
ASBESTOS WORKER/HEAT & FROST INSULATOR.....	\$ 55.02	35.75
HAZARDOUS MATERIAL HANDLER (INCLUDES PREPARATION, WETTING, STRIPPING REMOVAL SCRAPPING, VACUUMING, BAGGING AND DISPOSAL OF ALL INSULATION MATERIALS, WHETHER THEY CONTAIN ASBESTOS OR NOT, FROM MECHAINCAL SYSTEMS).....	\$ 44.02	32.76

ASBE0041-001 07/01/2024

LAGRANGE COUNTY

	Rates	Fringes
HAZARDOUS MATERIAL HANDLER (includes preparation, wettings, stripping, removal, scrapping, vaccuming, bagging & disposing of all insulation materails, whether they contain asbestos or not, from mechanical systems).....	\$ 35.10	19.39
Insulator/asbestos worker (Includes application of all insulating materials, protective coverings, coatings and finishings to all types of mechanical systems).....	\$ 35.10	19.39

* ASBE0075-001 06/01/2024

REMAINING COUNTIES

	Rates	Fringes
ASBESTOS WORKER/HEAT & FROST INSULATOR.....	\$ 39.50	28.19
HAZARDOUS MATERIAL HANDLER (includes preparation, wetting, stripping, removal, scrapping, vaccuming, bagging, and disposal of all insulation materials, whether they contain asbestos or not, from mechanical systems).....	\$ 39.50	28.19

 BOIL0374-004 01/01/2024

	Rates	Fringes
BOILERMAKER.....	\$ 42.41	35.72

 BRIN0006-001 06/01/2023

JASPER, NEWTON & STARKE COUNTIES

	Rates	Fringes
BRICKLAYER (Including Stonemason, and Pointer, Caulker & Cleaner).....	\$ 42.05	28.22
Tile, Marble & Terrazzo Worker...	\$ 42.05	28.22

 BRIN0018-003 06/01/2023

MARSHALL and PULASKI COUNTIES

	Rates	Fringes
Bricklayer, Caulker, Cleaner, Pointer.....	\$ 34.00	19.71
Terrazzo Worker Finisher.....	\$ 32.50	21.11
TERRAZZO WORKER/SETTER.....	\$ 34.50	23.62
Tile & Marble Finisher.....	\$ 32.50	21.11
Tile, Marble Setter.....	\$ 34.50	23.62

 BRIN0018-004 06/01/2021

	Rates	Fringes
BRICKLAYER BRICKLAYERS, POINTER, CLEANER & CAULKERS.....	\$ 31.11	18.40
TERRAZZO FINISHERS.....	\$ 30.00	15.54
TILE AND MARBLE FINISHERS...	\$ 31.00	19.16
TILE AND MARBLE WORKERS.....	\$ 33.00	22.33

 CARP0232-002 06/01/2024

Lagrange County

	Rates	Fringes
Carpenter & Piledrivermen.....	\$ 31.74	24.48

 CARP0413-001 06/01/2024

ELKHART, KOSCIUSKO and MARSHALL COUNTIES

	Rates	Fringes
Carpenter & Piledrivermen.....	\$ 33.11	24.28

 CARP1010-001 06/01/2024

JASPER, NEWTON, PULASKI & STARKE COUNTIES

	Rates	Fringes
CARPENTER.....	\$ 43.58	34.66
MILLWRIGHT.....	\$ 45.68	35.63

CARP1029-001 06/01/2024

ADAMS, ALLEN, CASS, DEKALB, ELKHART, FULTON, GRANT, HOWARD,
HUNTINGTON, KOSCIUSKO, LAGRANGE, MARSHALL, MIAMI, NOBLE, ST.
JOSEPH, STEUBEN, TIPTON, WABASH, WELLS and WHITLEY COUNTIES

	Rates	Fringes
MILLWRIGHT.....	\$ 33.90	29.08

* ELEC0153-003 06/01/2024

ELKHART, KOSCIUSKO and MARSHALL COUNTIES

	Rates	Fringes
Communication Technician.....	\$ 26.50	18.33
ELECTRICIAN.....	\$ 43.00	27.97

Includes the installation, operation, inspection, modification, maintenance and repair of systems used for the transmission and reception of signals of any nature, for any purpose, including but not limited to , sound and voice transmission/transference systems, communication systems that transmit or receive information and /or control systems, television and video systems, micro-processor controlled fire alarm systems, and security systems and the performance of any task directly related to such installation or service. The scope of work shall exclude the installation of electrical power wiring and the installation of conduit raceways exceeding fifteen (15) feet in length.

ELEC0305-001 12/01/2023

LAGRANGE COUNTIES

	Rates	Fringes
ELECTRICIAN.....	\$ 38.31	27.43%+10.66

ELEC0531-002 05/31/2023

JASPER, PULASKI, and STARKE COUNTIES

	Rates	Fringes
ELECTRICIAN.....	\$ 43.50	30.64

ELEC0697-002 06/01/2024

NEWTON COUNTY

	Rates	Fringes
--	-------	---------

ELECTRICIAN.....\$ 48.10 31.28

ELEC0697-005 08/31/2024

NEWTON COUNTY

Rates Fringes

Telecommunication Technician.....\$ 39.50 29.87

Work covers low voltage installation, maintenance and removal of telecommunication facilities (voice, sound, data and video) including, telephone and data inside wire, interconnect, terminal equipment, central offices, PABX, fiber optic cable and equipment, micro waves, V/SAT, bypass, CATV, WAN (wide area networks), LAN (local area networks), and ISDN (integrated system digital network). Work does not cover any work which properly comes under the work description of Inside JW (Journeyman Wireman), but shall cover the pulling of wire in raceways, ut not the installation of raceways.

ELEV0034-005 01/01/2024

JASPER, NEWTON and PULASKI COUNTIES

Rates Fringes

ELEVATOR MECHANIC.....\$ 57.68 37.885+a+b

- a) PAID HOLIDAYS: New Year's Day, Memorial Day, Independence Day, Labor Day, Vetern's Day, Thanksgiving Day, the Friday after Thanksgiving, and Christmas Day.
- b) Employer contributes 8% of regular hourly rate to vacation pay credit for employee with more than 5 years of service; 6% for less than 5 years' service.

ELEV0044-003 01/01/2024

ELKHART, KOSCIUSKO, LAGRANGE, MARSHALL and STARKE COUNTIES

Rates Fringes

ELEVATOR MECHANIC.....\$ 59.71 37.885+a+b

- a) PAID HOLIDAYS: New Year's Day, Memorial Day, Independence Day, Labor Day, Veterans' Day, Thanksgiving Day, the Friday after Thanksgiving, and Christmas Day.
- b) Employer contributes 8% of regular hourly rate to vacation pay credit for employee with more than 5 years of service; 6% for less than 5 years' service.

ENGI0150-002 06/01/2024

Rates Fringes

POWER EQUIPMENT OPERATOR

ELKHART, KOSCIUSKO,
LAGRANGE AND MARSHALL
COUNTIES

GROUP 1.....	\$ 33.15	37.30
GROUP 2.....	\$ 31.80	37.30
GROUP 3.....	\$ 31.00	37.30
GROUP 4.....	\$ 30.20	37.30
GROUP 5.....	\$ 27.60	37.30

JASPER, NEWTON, PULASKI &
STARKE COUNTIES

GROUP 1.....	\$ 46.55	44.48
GROUP 2.....	\$ 45.75	44.48
GROUP 3.....	\$ 41.45	44.48
GROUP 4.....	\$ 39.25	44.48
GROUP 5.....	\$ 33.80	44.48

POWER EQUIPMENT OPERATOR CLASSIFICATIONS

GROUP 1: Mechanic, Asphalt Plant, Auto Grader; Batc Plant, Benoto (requires 2 Engineers), Boiler and Throttle Valve, Boring Machine, (Mining machine Caisson Rigs, Central Redi-mix Plant, Combination Backhoe, Endloader with Backhoe Bucket over 1/2 cu. yd., Combination Tugger Hoist and Air Compressor, Compressor and Throttle, Concrete Breaker (Truck Mounted), Concrete Conveyor (truck mounted), Concrete Paver 27E cu. ft. and under, Concrete Paver over 27E cu. ft., Concrete Pump/grout pump with boom (Truck Mounted), Concrete Tower, Cranes and backhoes (all), Cranes, Hammerhead Tower, Crete Crane, Derricks (all), Derricks (traveling) Forklift, Lull Type, Forklift (10 ton & over, Hoist 1, 2, and 3 drums, Hoist, 2 Tugger one floor, Hydraulic Boom Truck, :aser screed, Locomotives, All Motor Patrol, Mucking Machine, Pile Driving & Skid Rig, Pit Machines, Pre-Stress Machines, Pump Cretes & Similar Types, Rock Drill (Self- Propelled), Rock Drill (Truck Mounted), Slip-Form Paver, Straddle Buggies, Tractor with Boom & Side Boom, Trenching Machine, Winch Tractor

GROUP 2: Air compressors (30 feeding and common receivers, Asphalt Spreader, Boilers, Bulldozers, Combination Backhoe-end loader with Backhoe bucket 1/2 cu. ft. an under, Grader-Elevating, Greaser Engineer, Guard rail post driver, Grouting Machines; Highlift Shovels or Front Endloader Hoist (automatic), Corboy Drilling Machines, Hoist (all Elevators), Hoists drawn, Stone Crushers, Tounapull, Winch Trucks, Tugger single frum, post hole digger, rollers (all), scoops, tractor drawn .

GROUP 3: Concrete Mixer (2 bag and over), Conveyor, Portable, Steam Generators, Tractors (farm and similar type), Air Compressor (small 150 and under - 1 to 5 to exceed a total of 300 ft., Air Compressor (large over 150), Combination (small equipment operator), Forklift (under 10 tons), Generator, Pumps (1 to 3 not to exceed a total of 300 ft., Pumps (well points), Welding Machines (2 through 5, Winches (4 electric Drill Winches).

GROUP 4: Heaters, Mechanical (1 to 5), Oilers, Swithmen, Bull Gang (crane erection crew).

GROUP 5: Forklifts

For ELKHART, KOSCIUSKO, LAGRANGE AND MARSHALL COUNTIES

POWER EQUIPMENT OPERATOR CLASSIFICATIONS

GROUP 1: Mechanic, Asphalt Plant, Asphalt Spreader, Auto Grader; Batch Plant, Benoto (requires 2 Engineers), Boiler and Throttle Valve, Boring Machine (road), Bulldozers with engines of 140 net horsepower or more, Caisson Rigs, Central Redi-mix plant, Concrete Conveyor Systems, Concrete Paver (over 27E cu. ft.), Concrete Paver (27E cu. ft. and under), Concrete placer, concrete placing boom, Concrete Pumps (Truck Mounted), Concrete Tower, Cranes and backhoes (all attachments), Cranes, Hammerhead, Creter Crane, Derricks (all), Forklift (capable of hoisting and mechanically moving forks horizontally), Grader, Elevating, Highlift Shovels or Front End Loaders, Hoists (2 or more drums), Lazer screed, Locomotives (all), Motor Patrol, Pile Drivers and Skid Rig, Pre-Stress Machines, Rock Drill (Self-Propelled), Rock Drill (Truck Mounted), Scoops (tractor drawn), Slip-form Paver, Tournapull, Tractor with Boom & Side Boom, Trenching Machine (12 or more inches in width), Combination Backhoe Front End Loader Machine with 1/2 cu. yd. or attachments.

GROUP 2: Air Compressor (600 cu. ft. and over), Bob Cat (over 3/4 cu. yd.), Boilers, Broom (all powered propelled), Bulldozers with engines less than 140 net horsepower, Combination backhoe frontend machine 1/2 cu yd backhoe bucket or under or with attachments Compressor and Throttle Valve, Concrete Breaker (truck mounted), Concrete Mixer (of more than 21 cu. ft. capacity), Forklift (with fixed or tilt mast), Greaser, Highlift shovel or frontend loader (3 yd bucket and under), Hoists (1 drum), Hydraulic Boom Truck, Post Hole Digger (vehicle mounted), Pumps Cretes (squeeze crete type pumps, Gypsum bulker and pump), Rollers (all), Steam Generators, Stone Crushers, Straddle Buggies, Tractors, Winch Trucks (with "a" frame).

GROUP 3: Buck Hoist, Combination (small equipment operator), Conveyor (portable), Grouting Machine, Hoist Elevators (material and personnel), Hydraulic Power Units, Grouting and Pile Driving, Stud Welder, Trenching Machines less than 12 inches in width, Welding Machines (8 through 15).

GROUP 4: Bobcat (up to and including 3/4 cu. yd.). Compressor (over 210 cu. ft. and less than 600 cu. ft.), Generator (over 50 kw.), Heaters, Mechanical, Hoists (all elevator, permanent installation), Hoist (automatic), Hoist (tugger single drum), Oilers, Pumps, Well Points and electric submersible, Small Rubber Tired End Loaders (1/4 cu. yd. and under), Tractors (farm type) Welding Machines (2 through 8).

GROUP 5: Bobcats and forklifts (commercial or residential

IRON0022-007 06/01/2024

JASPER (SOUTHEASTERN 1/2), NEWTON (SOUTHERN HALF), PULASKI (REMAINDER OF COUNTY)

	Rates	Fringes
IRONWORKER.....	\$ 36.70	26.09

The following holidays shall be observed: New Year's Day, Memorial Day, Independence Day, Labor Day, Thanksgiving Day and the day after Thanksgiving and Christmas Day. Any holiday which occurs on a Sunday shall be observed the following Monday, unless the legal observance of these holidays is changed by law.

IRON0147-005 06/01/2024

KOSCIUSKO (REMAINDER OF COUNTY) and LAGRANGE (REMAINDER OF COUNTY)

	Rates	Fringes
IRONWORKER.....	\$ 34.20	26.39

IRON0292-004 06/01/2024

ELKHART, KOSCIUSKO (Northwest Half excluding Warsaw), LAGRANGE (Western Half including city of Lagrange), MARSHALL, MIAMI (Northwestern Tip), NOBLE (Northwestern Tip), PULASKI (Northeast Half), and STARKE COUNTIES

	Rates	Fringes
IRONWORKER.....	\$ 37.83	24.75

IRON0395-002 06/01/2024

JASPER (NORTHERN 1/2), NEWTON (NORTHERN 1/2), PULASKI (NORTHWESTERN TIP) COUNTIES

	Rates	Fringes
IRONWORKER		
IRONWORKERS.....	\$ 46.33	39.67
SHEETER.....	\$ 46.58	39.67

LAB00041-002 06/01/2024

JASPER and NEWTON COUNTIES

	Rates	Fringes
Laborers:		
GROUP 1.....	\$ 39.26	28.90
GROUP 2.....	\$ 40.75	28.90
GROUP 3.....	\$ 41.26	28.90

LABORER CLASSIFICATIONS

GROUP 1: Building and Construction Laborers; Scaffold Builders (other than for Mason or Plasterers); Mechanic Tenders; Rodmen and Chainmen, Railroad Workers, Masonry

Wall Workers, (interior & exterior); Roofer Tenders, Cement Finisher Tenders, Carpenter Tenders, Portable Water, Pumps with discharge up to 3 inches; Waterproofing; Hauling of Creosote Lumber or Lutemen; Asphalt Rakers; Kettlem, Earth Compactors; Jackman and Sheetmen in Ditches more than 6 ft. deep; Laborers in ditches 6' deep or deeper; Assembly of Uncrete Pump; Tile Layers (sewer or field); Sewer Pipe Layers; Motor driven Wheelbarrows and Concrete Buggies; Hyster Operator; Pump Crete Assemblers; Core Drill Operator; Cement, Line or Silica Clay Handers; Handling of Toxic Materials damaging to clothing; Pneumatic Spikers; Deck Engine and Winch Operator; Water Main and Cable Ducking; Screed Man or Screw Operator on Asphalt Paver; Chain Saw and Demolition Saw Operator; Concrete Conveyor Assembler.

GROUP 2: Plaster Tenders, Masons Tenders; Mortar Mixers; Welders (acetylene or electric); Cutting Torch or Burner; Cement Nozzle; Cement Gun; Scaffold Builders when working for Plasterers, and Mason; Water Blast Machine Operator; Air Tool Operators and all Pneumatic Tool Operators; Air and Electric Vibrators and Chipping Hammer Operators; Asbestos Removal; Hazardous Waste Removal

GROUP 3: Dynamite Men; Drillers, Air Track or Wagon Drilling for explosives; Laborer Specialist

LAB00081-005 06/01/2024

STARKE COUNTY

	Rates	Fringes
LABORERS		
GROUP 1.....	\$ 39.26	28.90
GROUP 2.....	\$ 40.01	28.90
GROUP 3.....	\$ 40.26	28.90

LABORER CLASSIFICATIONS (BUILDING CONSTRUCTION)

GROUP 1: Building and Construction Laborers; Scaffold Builders (other than for Mason or Plasterers); Mechanic Tenders; Rodmen and Chainmen, Railroad Workers, Masonry Wall Workers, (interior & exterior); Roofer Tenders, Cement Finisher Tenders, Carpenter Tenders, Portable Water, Pumps with discharge up to 3 inches; Waterproofing; Hauling of Creosote Lumber or Lutemen; Asphalt Rakers; Kettlem, Earth Compactors; Jackman and Sheetmen in Ditches more than 6 ft. deep; Laborers in ditches 6' deep or deeper; Assembly of Uncrete Pump; Tile Layers (sewer or field); Sewer Pipe Layers; Motor driven Wheelbarrows and Concrete Buggies; Hyster Operator; Pump Crete Assemblers; Core Drill Operator; Cement, Line or Silica Clay Handers; Handling of Toxic Materials damaging to clothing; Pneumatic Spikers; Deck Engine and Winch Operator; Water Main and Cable Ducking; Screed Man or Screw Operator on Asphalt Paver; Chain Saw and Demolition Saw Operator; Concrete Conveyor Assembler.

GROUP 2: Plaster Tenders, Masons Tenders; Mortar Mixers; Welders (acetylene or electric); Cutting Torch or Burner;

Cement Nozzle; Cement Gun; Scaffold Builders when working for Plasterers, and Mason; Water Blast Machine Operator; Air Tool Operators and all Pneumatic Tool Operators; Air and Electric Vibrators and Chipping Hammer Operators; Asbestos Removal; Hazardous Waste Removal

GROUP 3: Dynamite Men; Drillers, Air Track or Wagon Drilling for explosives; Laborer Specialist

LAB00274-002 06/01/2024

PULASKI COUNTY

	Rates	Fringes
Laborers:		
GROUP 1.....	\$ 26.98	18.00
GROUP 2.....	\$ 27.73	18.00
GROUP 3.....	\$ 28.48	18.00

LABORER CLASSIFICATIONS

GROUP 1: Building and Construction Laborers; Scaffold Builders (other than for Mason or Plasterers); Mechanic Tenders; Rodmen and Chainmen, Railroad Workers, Masonry Wall Workers, (interior & exterior); Roofer Tenders, Cement Finisher Tenders, Carpenter Tenders, Portable Water, Pumps with discharge up to 3 inches; Waterproofing; Hauling of Creosote Lumber or Lutemen; Asphalt Rakers; Kettlem, Earth Compactors; Jackman and Sheetmen in Ditches more than 6 ft. deep; Laborers in ditches 6'deep or deeper; Assembly of Uncrete Pump; Tile Layers (sewer or field); Sewer Pipe Layers; Motor driven Wheelbarrows and Concrete Buggies; Hyster Operator; Pump Crete Assemblers; Core Drill Operator; Cement, Line or Silica Clay Handers; Handling of Toxic Materials damaging to clothing; Pneumatic Spikers; Deck Engine and Winch Operator; Water Main and Cable Ducking; Screed Man or Screw Operator on Asphalt Paver; Chain Saw and Demolition Saw Operator; Concrete Conveyor Assembler.

GROUP 2: Plaster Tenders, Mortar Mixers; Welders (acetylene or electric); Cutting Torch or Burner; Cement Nozzle; Cement Gun; Scaffold Builders when working for Plasterers, and Mason; Water Blast Machine Operator; Air Tool Operators and all Pneumatic Tool Operators; Air and Electric Vibrators and Chipping Hammer Operators; Asbestos Removal; Hazardous Waste Removal.

GROUP 3: Dynamite Men; Drillers, Mason Tenders; Air Track or Wagon Drilling for explosives; Laborer Specialist.

LAB00645-003 06/01/2024

BUILDING CONSTRUCTION

REMAINING COUNTIES

	Rates	Fringes
--	-------	---------

Laborers:

GROUP 1.....	\$ 28.43	18.00
GROUP 2.....	\$ 28.93	18.00
GROUP 3.....	\$ 30.43	18.00

BUILDING CONSTRUCTION

GROUP 1: Building and Construction Laborers; Scaffold Builders (other than for Plasterers); Mechanic Tenders; Window Washers and cleaners; Waterboys and Toolhousemen; Roofers Tenders; Railroad Workers; Masonry Wall Washers (interior and exterior); Cement Finisher Tenders; Carpenter Tenders; All Portable Water pumps with discharge up to (3) inches; Plaster Tenders; Flag & Signal Person.

GROUP 2: Waterproofing; Handling of Creosot Lumber or like treated material (excluding railroad material); Asphalt Rakers and Lutemen; Kettlemen; Air Tool Operators and all Pneumatic Tool Operators; Air and Electric Vibrators and Chipping Hammer Operators; Earth Compactors Jackmen and Sheetmen working Ditches deeper than (6) ft.in depth; Laborers working in ditches (6) ft.in depth or deeper; Assembly of Unicrete Pump; Tile Layers (sewer or field) and Sewer Pipe Layer (metallic or non-metallic); Motor driven Wheelbarrows and Concrete Buggies; Hyster Operators; Pump Crete Assemblers; Core Drill Operators; Cement, Lime or Silica Clay Handlers (bulk or bag); Handling of Toxic Materials damaging to clothing; Pneumatic Spikers; Deck Engine and Winch Operators; Water Main and Cable Ducking (metallic and non-metallic); Screed Man or Screw Operator on Asphalt Paver; Chain and Demolition Saw Operators; Concrete Conveyor Assemblers.

GROUP 3: Water Blast Machine Operator; Mortar Mixers; Welders (Acetylene or electric); Cutting Torch or Burner; Cement Nozzle. Laborers; Cement Gun Operator; Scaffold Builders when Working for Plasterers. Dynamite Men; Drillers - Air Track or Wagon Drilling for explosives Hazardous and Toxic material handler, Mason Tenders, asbestos removal or handler.

PAIN0027-005 06/01/2024

NEWTON COUNTY, West of Highway #41

	Rates	Fringes
GLAZIER.....	\$ 51.55	43.99

PAIN0091-006 06/01/2024

PAINTER

	Rates	Fringes
Brush & Roller, Drywall Taping & Finishing, Vinyl/Paper Hanging.....	\$ 31.00	18.62
Spray.....	\$ 31.50	18.62

PAIN0460-001 06/01/2024

JASPER, NEWTON, PULASKI AND STARKE COUNTIES:

	Rates	Fringes
Painters:		
Brush & Roller.....	\$ 39.00	28.76
Drywall Finisher.....	\$ 39.80	30.96

PAIN0469-003 06/01/2023

LAGRANGE COUNTY

	Rates	Fringes
Painters:		
Brush, Roller, Paperhanger, & Drywall Finishing.....	\$ 25.04	15.32
Lead Abatement.....	\$ 30.24	15.32
Spray & Sandblast Pot Tenders and Ground Personnel.....	\$ 25.04	15.32
Spray, Sandblast, Power Tools, Waterblast, & Steam Cleaning.....	\$ 25.04	15.32

PAIN1165-006 07/01/2024

JASPER, NEWTON (EAST OF HIGHWAY #41)

	Rates	Fringes
GLAZIER.....	\$ 42.09	29.23

PAIN1165-011 07/01/2024

ELKHART, KOSCIUSKO, LAGRANGE, MARSHALL, PULASKI, and STARKE COUNTY

	Rates	Fringes
GLAZIER.....	\$ 32.22	23.57

PLAS0101-004 06/01/2018

MARSHALL COUNTY AND PULASKI (SOUTHERN 1/2)

	Rates	Fringes
CEMENT MASON/CONCRETE FINISHER...	\$ 28.84	14.48
PLASTERER.....	\$ 26.81	12.40

PLAS0101-005 06/01/2018

ELKHART, KOSCIUSKO AND LAGRANGE COUNTIES

	Rates	Fringes
CEMENT MASON/CONCRETE FINISHER...	\$ 28.84	14.48
PLASTERER.....	\$ 25.69	11.75

PLAS0165-002 07/01/2018

NEWTON COUNTY

	Rates	Fringes
CEMENT MASON/CONCRETE FINISHER...	\$ 37.28	18.53
PLASTERER.....	\$ 32.70	17.70

PLAS0406-002 07/01/2018

JASPER (REMAINDER OF COUNTY, INCLUDING WHEATFIELD), PULASKI (N 1/2) and STARKE COUNTIES

	Rates	Fringes
CEMENT MASON/CONCRETE FINISHER...	\$ 35.48	21.68
PLASTERER.....	\$ 33.28	17.32

PLAS0438-002 06/01/2018

PULASKI (NORTHERN 2/3), JASPER (N. EASTERN PORTION OF, WEST TO, BUT NOT INCLUDING WHEATFIELD), STARKE (ENTIRETY)

	Rates	Fringes
CEMENT MASON/CONCRETE FINISHER...	\$ 36.01	25.40

PLUM0166-002 06/01/2024

ELKHART, KOSCIUSKO, and LAGRANGE COUNTIES

	Rates	Fringes
PLUMBER.....	\$ 41.50	21.66

PLUM0172-001 06/01/2024

JASPER (S of the N. Side of the City of Rensselaer), MARSHALL, PULASKI and STARKE COUNTIES

	Rates	Fringes
Plumber, Pipefitter, Steamfitter.....	\$ 40.78	23.09

PLUM0210-003 09/01/2024

JASPER (to the City of Rensselaer) and NEWTON COUNTIES

	Rates	Fringes
PLUMBER.....	\$ 47.52	28.41

PLUM0597-004 06/01/2018

JASPER (Excluding the city limits of Rensselaer), AND NEWTON (Entire County)

	Rates	Fringes
PIPEFITTER.....	\$ 48.50	31.12

ROOF0023-001 06/01/2024		

ELKHART, KOSCIUSKO, LAGRANGE, MARSHALL, PULASKI, and STARKE COUNTIES

	Rates	Fringes
ROOFER		
COMPOSITION.....	\$ 34.55	21.04
SLATE & TILE.....	\$ 36.05	21.04

ROOF0026-001 06/01/2024		

JASPER AND NEWTON COUNTIES

	Rates	Fringes
ROOFER.....	\$ 45.97	26.06

SFIN0669-002 04/01/2024		

	Rates	Fringes
SPRINKLER FITTER.....	\$ 45.40	27.29

SHEE0020-006 07/01/2023		

	Rates	Fringes
SHEET METAL WORKER		
Elkhart, Kosciusko, & Marshall.....	\$ 38.40	28.05
Jasper, Newton, Pulaski, & Starke.....	\$ 47.60	29.31
Lagrange.....	\$ 37.82	26.37

TEAM0135-005 04/01/2024		

JASPER and NEWTON COUNTIES

	Rates	Fringes
Truck drivers:		
GROUP 1.....	\$ 32.10	a
GROUP 2.....	\$ 32.60	a
GROUP 3.....	\$ 32.80	a
GROUP 4.....	\$ 32.95	a
GROUP 5.....	\$ 33.45	a

A: \$36.40 PER DAY & 450.00 PER WEEK.

TRUCK DRIVER CLASSIFICATIONS

GROUP 1: Single Axle Trucks seven (7) cu.yds. or less than ten and one-half (10 1/2/) tons, dumpsters, scoop-mobiles five (5) cu.yds. and under or less than seven and one-half

(7 1/2) tons, mixer trucks three (3) cu.yds. and under, air compressors and welding machines, including those pulled by separate units, batch trucks-wet or dry-2 ""34-E"" batches or less, truck driver helpers, warehousemen, mechanic's helpers, greasers and tiremen, all pick- up trucks and other vehicles. Drivers on dumpsters or similar dumpsters, mounted on four (4) wheel truck rated two (2) cu.yds. or less, and small pallet type fork-lift operator and drivers on pallet jacks or similar type equipment.

GROUP 2: Drivers on tandem axle eighteen (18) cu.yds. or twenty-four (24) tons gross, six (6) wheel trucks, Koehring or similar dumpsters, tract rucks, Euclids, hug bottom dumps, tournapulls, tournatrailers, trouarnarockers, or similar equipment when used for transportation purposes under nine (9) cu.yds. or less than thirteen and one-half (13 1/2) tons, tandems and semi-trailer service trucks, mixer trucks over three (3) cu.yds.,fork lift, four (4) wheel A-frame trucks when used for transportation purposes, four (4) wheel winch trucks, pavement breakers, batch trucks-wet or dry-over 2 up to and including 4 - ""34-E"" batches two (2) men oil distributors, fork-lift under four (4) ton and vacuum trucks.

GROUP 3: Koehring or similar dumpsters, tract trucks, semi-trailer water trucks, Euclids, hug bottom dumps, tournapulls, tournatrailers, tournarockers, tractor-trailers, tandems Q-frame winch trucks, hydrolift trucks or similar equipment when used for transportation purposes, mixer trucks over six and one-half (6 1/2) cu.yds. batch trucks wet or dry over 4 - ""34-E"" batches single axle low boy trailers, and Contractor's mechanics when working on equipment operated by employees within this Bargaining Unit. Six (6) wheel pole trailers and one (1) man oil distributors, fork-lift over four (4) ton and mobile mixers.

GROUP 4: Drivers on heavy equipment over sixteen (16) cu.yds. or twenty-four ton, such as Koehring or similar dumpsters, tract trucks, Euclids, hug bottom dumps, trounapulls, tournarockers or similar equipment when used for transportation purposes, pole trailers over six (6) wheels, water pulls, low-boy trailers, tandem axles, quad axle or more no-weight limitation, diseal and/or heavy equipment mechanics when working on equipment operated by employees with this Bargaining unit.

GROUP 5: Mechanic furnishing his own tools.

TEAM0364-001 06/01/2024

BUILDING

ELKHART, KOSCIUSKO, LAGRANGE & MARSHALL COUNTIES:

	Rates	Fringes
TRUCK DRIVER		
GROUP 1.....	\$ 32.75	a+b
GROUP 2.....	\$ 32.95	a+b
GROUP 3.....	\$ 33.25	a+b

GROUP 4.....\$ 33.75 a+b

FOOTNOTE:

a. FRINGE BENEFITS: \$422.50 per week

b. HOLIDAYS: New Year's Day, Memorial Day, Fourth of July, Labor Day, Thanksgiving Day and Christmas Day

TRUCK DRIVERS BUILDING CLASSIFICATIONS

- GROUP 1: Pickup Trucks
- GROUP 2: Single Axle Trucks
- GROUP 3: Tandem, Triaxle and Fuel Trucks
- GROUP 4: Semi Trailer Trucks

WELDERS - Receive rate prescribed for craft performing operation to which welding is incidental.

=====

Note: Executive Order (EO) 13706, Establishing Paid Sick Leave for Federal Contractors applies to all contracts subject to the Davis-Bacon Act for which the contract is awarded (and any solicitation was issued) on or after January 1, 2017. If this contract is covered by the EO, the contractor must provide employees with 1 hour of paid sick leave for every 30 hours they work, up to 56 hours of paid sick leave each year. Employees must be permitted to use paid sick leave for their own illness, injury or other health-related needs, including preventive care; to assist a family member (or person who is like family to the employee) who is ill, injured, or has other health-related needs, including preventive care; or for reasons resulting from, or to assist a family member (or person who is like family to the employee) who is a victim of, domestic violence, sexual assault, or stalking. Additional information on contractor requirements and worker protections under the EO is available at <https://www.dol.gov/agencies/whd/government-contracts>.

Unlisted classifications needed for work not included within the scope of the classifications listed may be added after award only as provided in the labor standards contract clauses (29CFR 5.5 (a) (1) (iii)).

The body of each wage determination lists the classifications and wage rates that have been found to be prevailing for the type(s) of construction and geographic area covered by the wage determination. The classifications are listed in alphabetical order under rate identifiers indicating whether the particular rate is a union rate (current union negotiated rate), a survey rate, a weighted union average rate, a state adopted rate, or a supplemental classification rate.

Union Rate Identifiers

A four-letter identifier beginning with characters other than

""SU"", ""UAVG"", ?SA?, or ?SC? denotes that a union rate was prevailing for that classification in the survey. Example: PLUM0198-005 07/01/2024. PLUM is an identifier of the union whose collectively bargained rate prevailed in the survey for this classification, which in this example would be Plumbers. 0198 indicates the local union number or district council number where applicable, i.e., Plumbers Local 0198. The next number, 005 in the example, is an internal number used in processing the wage determination. The date, 07/01/2024 in the example, is the effective date of the most current negotiated rate.

Union prevailing wage rates are updated to reflect all changes over time that are reported to WHD in the rates in the collective bargaining agreement (CBA) governing the classification.

Union Average Rate Identifiers

The UAVG identifier indicates that no single rate prevailed for those classifications, but that 100% of the data reported for the classifications reflected union rates. EXAMPLE: UAVG-OH-0010 01/01/2024. UAVG indicates that the rate is a weighted union average rate. OH indicates the State of Ohio. The next number, 0010 in the example, is an internal number used in producing the wage determination. The date, 01/01/2024 in the example, indicates the date the wage determination was updated to reflect the most current union average rate.

A UAVG rate will be updated once a year, usually in January, to reflect a weighted average of the current rates in the collective bargaining agreements on which the rate is based.

Survey Rate Identifiers

The ""SU"" identifier indicates that either a single non-union rate prevailed (as defined in 29 CFR 1.2) for this classification in the survey or that the rate was derived by computing a weighted average rate based on all the rates reported in the survey for that classification. As a weighted average rate includes all rates reported in the survey, it may include both union and non-union rates. Example: SUFL2022-007 6/27/2024. SU indicates the rate is a single non-union prevailing rate or a weighted average of survey data for that classification. FL indicates the State of Florida. 2022 is the year of the survey on which these classifications and rates are based. The next number, 007 in the example, is an internal number used in producing the wage determination. The date, 6/27/2024 in the example, indicates the survey completion date for the classifications and rates under that identifier.

?SU? wage rates typically remain in effect until a new survey is conducted. However, the Wage and Hour Division (WHD) has the discretion to update such rates under 29 CFR 1.6(c)(1).

State Adopted Rate Identifiers

The ""SA"" identifier indicates that the classifications and prevailing wage rates set by a state (or local) government were adopted under 29 C.F.R 1.3(g)-(h). Example: SAME2023-007 01/03/2024. SA reflects that the rates are state adopted. ME refers to the State of Maine. 2023 is the year during which the

state completed the survey on which the listed classifications and rates are based. The next number, 007 in the example, is an internal number used in producing the wage determination. The date, 01/03/2024 in the example, reflects the date on which the classifications and rates under the ?SA? identifier took effect under state law in the state from which the rates were adopted.

WAGE DETERMINATION APPEALS PROCESS

1) Has there been an initial decision in the matter? This can be:

- a) a survey underlying a wage determination
- b) an existing published wage determination
- c) an initial WHD letter setting forth a position on a wage determination matter
- d) an initial conformance (additional classification and rate) determination

On survey related matters, initial contact, including requests for summaries of surveys, should be directed to the WHD Branch of Wage Surveys. Requests can be submitted via email to davisbaconinfo@dol.gov or by mail to:

Branch of Wage Surveys
Wage and Hour Division
U.S. Department of Labor
200 Constitution Avenue, N.W.
Washington, DC 20210

Regarding any other wage determination matter such as conformance decisions, requests for initial decisions should be directed to the WHD Branch of Construction Wage Determinations. Requests can be submitted via email to BCWD-Office@dol.gov or by mail to:

Branch of Construction Wage Determinations
Wage and Hour Division
U.S. Department of Labor
200 Constitution Avenue, N.W.
Washington, DC 20210

2) If an initial decision has been issued, then any interested party (those affected by the action) that disagrees with the decision can request review and reconsideration from the Wage and Hour Administrator (See 29 CFR Part 1.8 and 29 CFR Part 7). Requests for review and reconsideration can be submitted via email to dba.reconsideration@dol.gov or by mail to:

Wage and Hour Administrator
U.S. Department of Labor
200 Constitution Avenue, N.W.
Washington, DC 20210

The request should be accompanied by a full statement of the interested party's position and any information (wage payment data, project description, area practice material, etc.) that the requestor considers relevant to the issue.

3) If the decision of the Administrator is not favorable, an interested party may appeal directly to the Administrative Review Board (formerly the Wage Appeals Board). Write to:

Administrative Review Board
U.S. Department of Labor
200 Constitution Avenue, N.W.
Washington, DC 20210.

=====

END OF GENERAL DECISION"

**SECTION 02 26 23
ASBESTOS INSPECTION REPORT**

THE FOLLOWING ASBESTOS INSPECTION REPORT BY INDUSTRIAL SAFETY AND ENVIRONMENTAL SERVICES, INC. IS DATED MAY 2012 HAS BEEN INCLUDED.

UNLESS OTHERWISE SPECIFIED, IT IS ASSUMED THAT EXISTING BUILDING MATERIALS CONFORM TO THE MATERIAL TESTING REPORTS AS DESCRIBED IN THE REPORT. NEITHER THE ENGINEERS, THE ARCHITECT NOR THE OWNER GUARANTEE THAT MATERIALS AND CONDITIONS OTHER THAN THOSE DISCLOSED BY SAID REPORTS WILL NOT BE ENCOUNTERED OR THAT THE PROPORTIONS OF THE VARIOUS MATERIALS WILL NOT VARY FROM THOSE INDICATED.

ASBESTOS-CONTAINING MATERIALS SHALL BE REMOVED BY A CONTRACTOR CERTIFIED IN THE STATE OF INDIANA TO PERFORM ASBESTOS ABATEMENT. ASBESTOS SHALL BE REMOVED AND DISPOSED BY METHODS APPROVED BY THE GOVERNING JURISDICTION AND IN COMPLIANCE WITH FEDERAL REGULATION 40 CFR 61, SUBPART M. CONTRACTOR SHALL CONFIRM REPORTING REQUIREMENTS AND PROVIDE DOCUMENTATION OF PROPER DISPOSAL OF ASBESTOS-CONTAINING MATERIAL TO THE OWNER.

THE CONTRACTOR SHALL NOTIFY THE OWNER AND ARCHITECT IF SUSPECT MATERIALS ARE DISCOVERED DURING THE COURSE OF THE RENOVATION PROJECT WHICH ARE NOT IDENTIFIED IN THE REPORT.

END OF SECTION



Indiana Dept. of Environmental Management

Mary K. Norris

Asbestos Inspector License #: 19A002713

Effective: **01/20/2012**

Expiration: **01/20/2013**

Birth Date: **10/24/1961**

Gender: **F**

Height: **5-04**

Eye Color: **Blue**

Weight: **202**

Hair Color: **Blonde**

**Asbestos Inspection Report
Rosedale High Apartments
Boiler Room
501 West Indiana Avenue
Elkhart, Indiana**

As Prepared By:

Industrial Safety and Environmental Services, Inc.

May 2012

1.0 Executive Summary

Industrial Safety and Environmental Services, Inc. (ISES), was requested to conduct an asbestos inspection of the Rosedale High Apartments, Boiler Room, by B.C. Mechanical, Inc. prior to demolition of the two boilers. The Rosedale high Apartments are located at 501 West Indiana Avenue, Elkhart, Indiana. This report provides information concerning asbestos-containing materials identified at this site and the procedures used to identify these materials.

- Asbestos was identified in the large grey boiler stacks located in the Boiler Room.

The asbestos inspection was performed by:

Mary K. Norris

IN Inspector License Number 19A002713

2.0 Background Information

The purpose of this inspection was to identify the presence of accessible suspect asbestos-containing building materials (ACBM) in the Boiler Room of the Rosedale High Apartments located at 501 West Indiana Avenue, Elkhart, Indiana. The scope of work included a visual inspection and bulk sampling for asbestos. This asbestos report contains the results of the on-site sampling results for the samples collected.

LIMITATIONS

This inspection was limited to the sampling of suspect ACBM. There may be other hazardous materials within the building or on the property that were not within the scope of this inspection. Additionally, the following materials are Presumed Asbestos-Containing Materials¹ (PACM) unless otherwise proven. Areas specifically excluded include:

- Insulation Contained in Metal Fire Doors
- Electrical Wiring
- Roofing Materials

3.0 Asbestos Survey

Asbestos-Containing Building Materials Summary

ACBM is any material containing more than 1% asbestos of any type or mixture of types. State and Federal Regulations require asbestos-containing materials be removed prior to demolition, renovation or other actions that may disturb it.

Appendix I contains the Homogenous Area Data Sheets (HADS) for each homogenous area sampled. The HADS also include information pertaining to the condition, accessibility and individual result for each sample collected in the homogeneous area.

Appendix II contains the analytical results. Contained in **Appendix III**, are photographs depicting areas where samples were collected.

4.0 Asbestos Survey Procedure

The asbestos survey procedure consists of a visual evaluation of exposed building materials to locate and identify suspect ACBM. Bulk samples of suspect ACBM are collected at ISES's discretion and submitted for analysis.

The bulk samples are collected based upon the various types of suspect homogenous materials observed throughout the building. Some material recognized by the inspector as asbestos may not have been sampled and assumed to be asbestos, in accordance with Environmental Protection Agency (EPA) Regulations. Any assumed ACBM is listed in the Asbestos Inspection Report.

Some investigation techniques may have been destructive in nature (i.e. opening of walls to determine if suspect asbestos-containing material is present). Additionally, any investigation by nature was limited and performed in a representative manner. No representation is made that other areas investigated do not contain concealed ACBM.

¹ In buildings constructed prior to 1981, all materials are Presumed to contain Asbestos unless otherwise proven through laboratory analysis.

Any work performed by ISES was done using the degree of care and skill ordinarily exercised under similar circumstances by members of the profession practicing in the same or similar capacity.

Samples are transmitted directly to an **independent** laboratory and analyzed by Polarized Light Microscopy (PLM) in accordance with the EPA "Interim Method for the Determination of Asbestos in Bulk Insulation", 40 CFR 763, Subpart F, Appendix A.

5.0 Recommendations Concerning Asbestos

ISES suggests the following to ensure compliance with state and federal asbestos regulations and to reduce possible liabilities.

1. Procedures for Asbestos Emission Control
Applicable emission control procedures as specified at 326 IAC 14-10-4 and 40 CFR 61.145(c). Per 326 IAC 14-10-1, emission control requirements are applicable for any removal or disturbance of Regulated Asbestos Containing Material (RACM) greater than three (3) linear feet on pipes or three (3) square feet on any other facility components or a total of at least 0.75 cubic feet on all facility components.
2. A Licensed Asbestos Abatement Contractor must perform the asbestos abatement activities when they are conducted in the facility. Additionally, when abatement activities are being performed, the Indiana Department of Environmental Management (IDEM) Asbestos Section requires notification to be given for disturbances greater than the allowable minimum requirements.

The Findings and Recommendations are based upon observations and information available to ISES at the time the service was rendered. The conclusions in this report are professional opinions based upon the findings, analytical results and industry standards.

Should you have any questions, please contact me at your earliest convenience.



Mary K. Norris
Senior Industrial Hygienist
Industrial Safety and Environmental Services, Inc.
IN License Number 19A002713

Appendix I	Homogeneous Area Data
Appendix II	Laboratory Analysis
Appendix III	Photo-Documentation Log
Appendix IV	Inspector Credentials

Homogeneous Area Data

Homogeneous Area Number: RHA -01

Homogeneous Material Name: Pipe Wrap

Inspector Name: Kathy Norris

Inspector Certification Number: 19A002713

Homogeneous Material Location: Boiler Room

Homogeneous Area Description: TSI

Approximate Quantity: 69 LF

Is Area Damaged: Yes

Is Friable Asbestos Present: Yes

Accessibility: Yes

Air Movement: No

Vibration: No

Response Actions:
 The large grey pipe wrap from boiler stack is part of the removal of the two boilers. Removal needs to be completed by a License Asbestos Removal Company.

Sample Number	Asbestos Present	Type of Asbestos	Homogeneous Material Description	Sample Location	Picture Ref.
RHA-01	Yes	Chrysotile	Grey Pipe Wrap	Boiler Room Stack	1
RHA-02	No	NA	Green Pipe Wrap	Boiler Room near Boiler	2
RHA-03	No	NA	Red Pipe Wrap	Boiler Room near Boiler	3
RHA-04	No	NA	Seal	Boiler Seal	4
RHA-05	No	NA	Green Pipe Wrap	Boiler Room by Stairs	5
RHA-06	No	NA	Red Pipe Wrap	Boil Room Shut-offs	6

Comments: _____



ANALYSIS OF SUSPECT ASBESTOS CONTAINING BUILDING MATERIALS

METHOD:

All analyses and quantifications are performed in accordance with the U.S. Environmental Protection Agency's "Method for the Determination of Asbestos in Bulk Building Materials", EPA/600/R-93/116. The method utilizes stereoscopic examination of bulk samples, as well as utilizing the polarized light microscope (PLM). To determine the refractive index, the central stop dispersion staining method is used, as well as matching with refractive index oil and using light matching the sodium D line wavelength. Identification of non-asbestos species is less rigorous, as they are of secondary interest.

If applicable, please be advised that the Stereo Scope/PLM methods have limitations regarding floor tile analysis for asbestos content. Historically, the production of floor tile has included the grinding of asbestos into submicroscopic portions. Therefore, this method of analysis may produce incorrect results for tests of floor tile which produce negative finding for asbestos.

Gross samples are examined under a 10X or 20X stereoscope where homogeneity (need for sub-samples), texture and /or any other distinguishing characteristics are determined. Sub-samples are prepared if needed. Any fibrous material is mounted in high dispersion oil for further microscope examination utilizing PLM. Any possible asbestos fibers are analyzed for morphology, color and pleochroism, index of refraction parallel and perpendicular to elongation, birefringence, extinction characteristic and sign of elongation, and any other distinguishing characteristics observed.

The percentage of asbestos and other fibrous materials are then determined according to sample area coverage and thickness. The limit of qualification is one percent (1%). The above is recorded on the laboratory analysis sheet and maintained for three years. The error involved for reported percentages of fibrous is 100% error for 1% to 5%, 50% error for 5% to 20%, and 25% error for 20% to 100%. All percentages will be reported in a range indicating error or a single value, in which case the above error should be applied. When the value 1% or greater is reported this indicates asbestos is present in the sample.

THE REPORT:

The attached report quantifies the fibrous materials found in each sample submitted for analysis. A complete fibrous analysis of samples is given for each sample followed by a breakdown analysis of any sub-samples for heterogeneous material.

- The first column is the client sample number identification.
- The second column is the laboratory sample number. The laboratory number for the overall sample analysis is a digit number. The laboratory number followed by a letter designation (A,B,C, etc.) indicates a sub-sample analysis.
- The third column is the sample identification, which indicates whether the sample is homogeneous or heterogeneous, the color of the sample, and the physical description (cementitious, fibrous, cloth, etc.)
- The fourth column indicates the types and percentages of asbestos identified if any.
- The fifth column indicates the types and percentages of cellulose (CELL) non-asbestos identified.
- The sixth column indicates the types and percentages of non-fibrous, non-asbestos material (NON -FIB NON-ACBM) identified.
- The seventh column indicates the types and percentages of fibrous non-asbestos material (FIB NON ACBM) in the sample or sub-sample.

SAMPLE RETENTION:

Samples will be retained for 6 months unless otherwise instructed. After this period, the sample(s) will be disposed of appropriately. Upon written request, the samples will be returned by mail or delivery for a nominal fee to cover postage and handling. There would be no charge for samples picked-up at ACM Engineering & Environmental Services.

DISCUSSION AND RECOMMENDATIONS:

In order to reduce the risk of introducing asbestos fibers into the air, care should be taken not to disturb the asbestos containing building materials. If renovation, demolition or other activities might disturb known asbestos containing building materials, a reputable asbestos consultant should be contacted to help effectively design and implement an asbestos management program.

COMPONENTS DESCRIPTION:

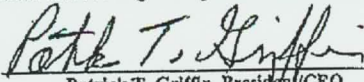
ASBESTOS MATERIALS

A = Amosite
 AC = Actinolite
 AN = Anthophyllite
 C = Chrysotile
 CR = Crocidolite
 T = Tremolite
 ---- = No Asbestos Detected

NON-ASBESTOS MATERIALS

CF = Ceramic Fibers N = Nylon
 CO = Cotton O = Other
 G = Fibrous Glass S = Synthetics
 H = Hair V = Vermiculite
 M = Mineral Wool

NOTE: ACM Engineering & Environmental Services does not deviate from the test method described in this report. This report must not be used by the client to claim product endorsement by NVLAP or any agency of the U.S. Government. This report relates only to the items above. This report must not be reproduced, except in full, without the written consent of ACM Engineering & Environmental Services.

Report prepared by: 
 Patrick T. Griffin, President/CEO
 ACM Engineering & Environmental Services

**ACM ENGINEERING & ENVIRONMENTAL SERVICES**

WWW.ACMENV.COM

26598 U.S. 20 WEST, SOUTH BEND, IN 46628

P: (574)234-8435 F: (574)234-6800

CLIENT: Industrial Safety &
Environmental Services
30723 Old US Hwy 20
Elkhart, IN 46514

ANALYSIS METHOD: EPS/600/R-93-116
NVLAP LAB ID #: 101977
MATRIX: Bulk

LOCATION: RHA
Elkhart, IN

Sample Date: 05/21/12
Analysis Date: 05/21/12
ACM PROJECT #: 18861

CLIENT SAMPLE #	LAB SAMPLE #	SAMPLE IDENTIFICATION	ASBEST	CELL	NON-FIB NON- ACBM	FIB NON ACBM
1	1206444	GREY PIPE WRAP	67% C	----	33%	----
2	1206445	GREEN PIPE WRAP	----	----	57%	43% G
3	1206446	RED PIPE WRAP	----	----	54%	46% G
4	1206447	BOILER SEAL	----	----	----	100% G
5	1206448	GREEN PIPE WRAP	----	----	55%	45% G
6	1206449	RED PIPE WRAP	----	----	54%	46% G

**ACM RECOMMENDS POINT COUNTING ANALYSIS ON ALL BULK SAMPLES
WITH LESS THAN 10% (<10%) ASBESTOS CONTENT.**

Microscopist:

Title:

LAB DIRECTOR

Date:

5/21/12

ACM Engineering & Environmental Services, Inc.

**Suspect Asbestos Containing Building Material
Sampling - Chain-of-Custody - Analysis Request Form**

ACM Project # 18861

26598 US 20 West
South Bend, Indiana 46628
Phone (574) 234-8435
Fax (574) 234-6800



Client: TSES
Billing Address: 30723 Old US Hwy 20
Billing City, State, Zip: Elkhart IN 46514
Report Results To: Kathy Thomas
Sampling Date: 5-21-12 Sampled By: KT

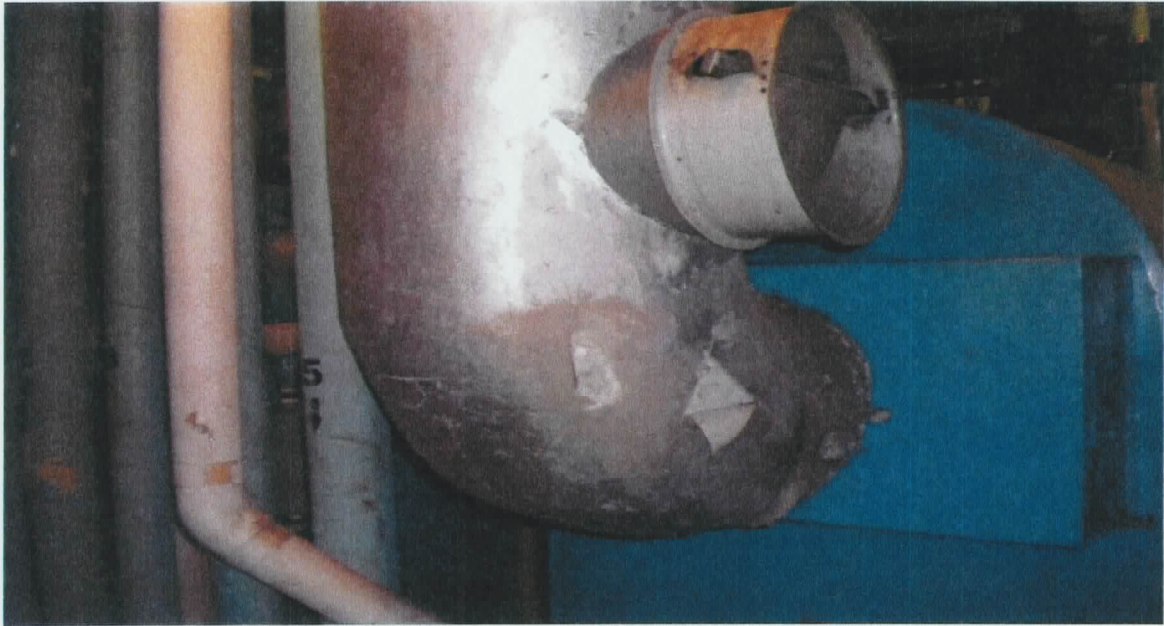
Site Location: RHA
Address: Elkhart
Type of Project: Standard
Requested Turn Around Time: SCM
Reference Number: SCM

NVLAP

Sample Identification	Sample Type (Bulk, Wipe, Other)	Sample Description	Sample Location	Requested Analysis; Instructions / Comments
1	Bulk	Gray Pipe Wrap	By Boiler	Asbestos
2	Bulk	Green Pipe Wrap	By Boiler	"
3	Bulk	Red Pipe Wrap	Over boiler	"
4	Bulk	Boiler Seal	Boiler	"
5	Bulk	Green Pipe Wrap	By Boiler	"
6	Bulk	Red Pipe Wrap	Fire-shed off's	"

Submitted by: (sign) [Signature] (print) Alan G. Esko Date Submitted: 5-21-12
 Received by: (sign) [Signature] (print) Anna P. Fath Date and time received: 5/21/12 12:07
 (For lab use only) Samples processed by: [Signature] Date: 5/21/12 Time: From am/pm to 1250 am/pm

ROSEDALE HIGH APARTMENTS
501 WEST INDIANA AVENUE
ELKHART, INDIANA
MAY 21, 2012



Boiler Room—Boiler installed in 2001. Sample was collected from the grey boiler stack and submitted for asbestos analysis. It should be noted that boiler stack pipe wrap was positive for asbestos.

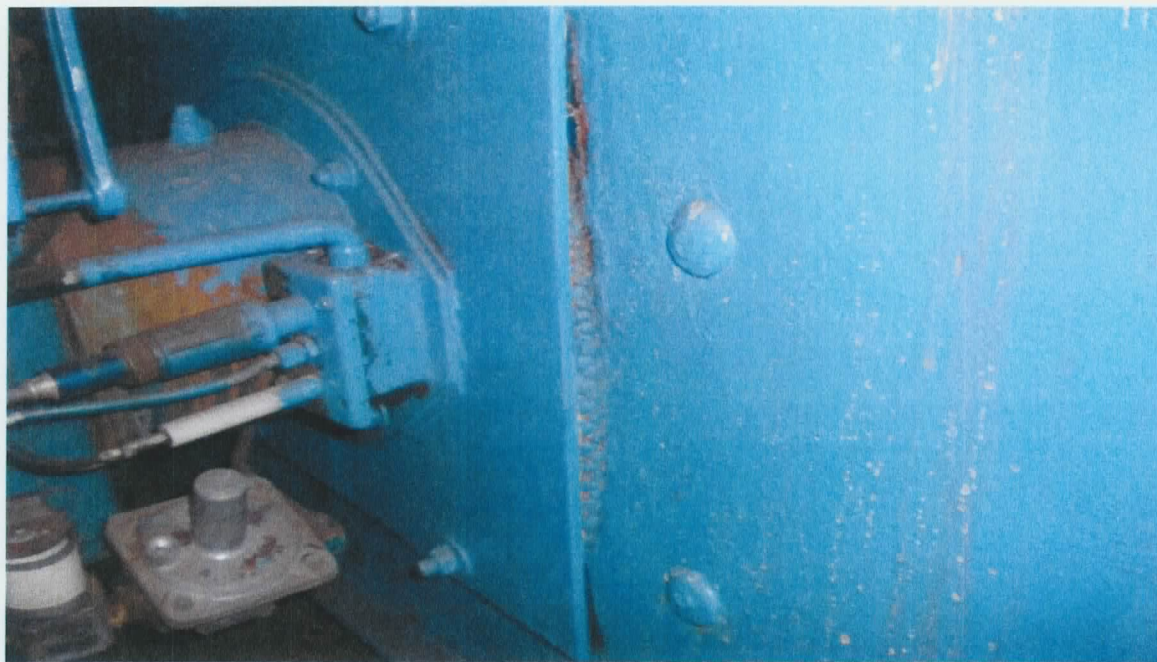


Boiler Room—A sample was collected from the green pipe wrap also attached to the boiler in the Boiler Room. The sample collected tested negative for asbestos.

ROSEDALE HIGH APARTMENTS
501 WEST INDIANA AVENUE
ELKHART, INDIANA
MAY 21, 2012



Boiler Room— A sample was collected from the red pipe wrap also connected to the boiler. The sample collected tested negative for asbestos.



Boiler Room—Boiler installed in 2001. Sample was collected from the boiler gasket and submitted for asbestos analysis. It should be noted that boiler installed after 1981 should not contain asbestos. The sample collected tested negative for asbestos.

ROSEDALE HIGH APARTMENTS
501 WEST INDIANA AVENUE
ELKHART, INDIANA
MAY 21, 2012



Boiler Room—An additional example of green pipe wrap was collected near the stairs. The sample collected tested negative for asbestos.



Boiler Room—An additional sample of the red pipe wrap was also collected from the shut-off valves. The sample collected tested negative for asbestos.