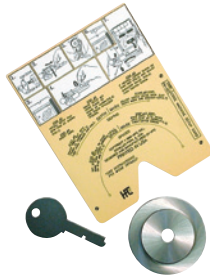




KEY MACHINE ACCESSORIES



CMB CK

CMB CK

- Easy to use tool kit for use with all Blitz™ and 1200CM code machines
- Designed to quickly and accurately diagnose whether your machine is out of calibration
- When out of calibration the kit is used to calibrate your machine or determine whether factory service is needed



TYX3

TYX3

- Made of Tylon-X, this carbide impregnated brush de-burrs faster, smoother, and lasts 6 times longer than wire

MFG #	DESCRIPTION	EZ #
CMB CK	Calibration Kit	064176
TYX3	Debrurring Brush	005324

POCKET SIZED KEY DECODER KIT



HKD75

- The Pocket Size Decoder Kit determines the original factory depths of most popular keys when re-keying new or worn cylinders
- Lowering the depth pin into each cut, from bow to tip, will indicate the correct depths in the window at the top
- Pivoting depth pin allows for easy decoding of Medeco® angles
- Each information card also lists the manufacturers depth and space specifications
- Supplied with soft carrying case, 3 shims, and 111 information cards

MFG #	DESCRIPTION	EZ #
HKD75	Key Decoder	026420

KEY FILE SETS



KFS6

KFS6

- Key file set contains 6 of 4" #2 cut fine Swiss pattern files with wood handles
- Has rectangular straight, half round tapered, 3-square tapered, warding tapered, round tapered & square tapered
- Includes plastic carrying case



IFH4

IFH4

- Impressioning #4 extra fine file is tapered to a fine point providing a mirror finish to detect impression marks
- Includes protective plastic case

MFG #	EZ #
IFH4	004945
KFS6	004993

TRI CODE HS ELECTRONIC HIGH SECURITY CODE MACHINE



- No set-up or initial calibration required; fully equipped and ready to cut keys once you remove it from the box
- Microprocessor controlled cutting operation, utilizing a precision x-y stepper motor carriage transport mechanism
- Extensive "on-board" database contains cut specifications for dozens of sidewinder/laser style automotive key systems and also includes indirect codes for most major automotive brands using sidewinder/laser style keys
- Versatile three-position vise clamp (optional vises are not required)
- Only one cutter required to support all applications
- Simple to follow menus with easy view LCD display and generous size keypad for easy operation
- Built-in light illuminates cutting area
- Protective safety shield

MFG #	EZ #
TRI-CODE HS	087887

UNIVERSAL II "CARD TYPE" MECHANICAL CODE MACHINE



The ultimate "Card Type" mechanical code machine for originating commercial/residential and automotive keys!

Loaded with many exclusive "performance features", the Universal II is a cut above competitive products!

- Code Cards and Cutters are interchangeable between the Ilco Universal II and competitive card type code machines
- Supplied with 2 cutters and 120 code cards, providing great versatility right out of the box
- Utilizes code cards, allowing the operator to change the machine setup quickly from one application to another, and add new applications at minimal cost
- Exclusive Easy-View code cards enhance cutting accuracy and speed Dial type depth adjustment system for precise calibration of cutting depth
- "Flapper" style key alignment gage ensures accurate, level key blank placement
- Quick rate depth and spacing drive shafts speed up the key cutting process
- Titanium Nitride coated cutters for long cutting life
- "Soft Touch" nylon deburring brush

MFG #	EZ #
UNIVERSAL II	080888

KEY MACHINE CUTTERS & ACCESSORIES

MFG #	TYPE	MATERIAL	DIAMETER	THICKNESS	HOLE	USED FOR	EZ #
3S	Slotter	TS	2-1/2"	.040"	3/8"	DL125, 125A, 126, 126M	035663
4S	Slotter	TS	2-1/2"	.040"	1/2"	DL136, 137D, 146, 146D	035664
10MC	Milling Cutter	HSS	2-3/4"	.280"	7/8"	DL125A, 130AM, 132AM	003244
11MC	Milling Cutter	TS	2-1/4"	.290"	1/2"	024, DL144M	007013
23RF	Rotary File	CS	2-1/4"	.250"	1/2"	008, 2184CD, H2584CV, 2585DU	007297
X23MC	Milling Cutter	TNC	2-3/8"	.093"	1/2"	025, 023, 045	035667
34MC	Milling Cutter	TS	2-1/4"	.250"	1/2"	2585DU, H2584CV, 2184CD	007309
SMS45	Side Milling Slotter	HSS	2-3/8"	.045"	1/2"	026, H2584/5SMS, 2184CD, 2584CV	006270
CU50A	Milling Cutter	C	3.15"	.197"	.630"	KD50A, KD71A	035666
D301840ZZ	Nylon Brush	Tynex® Nylon	3.25"	—	7/16"	Bravo II, Bravo USA	038419
814 00 51	Nylon Brush	Nylon	3"	—	9/16"	Ilco & Old Dominion Key Machines; 044, 045, 046 & Etc	007415

HSS - HIGH SPEED STEEL TS - TUNGSTEN STEEL CS - CARBON STEEL TNC - TITANIUM NITRIDE COATED C- COBALT