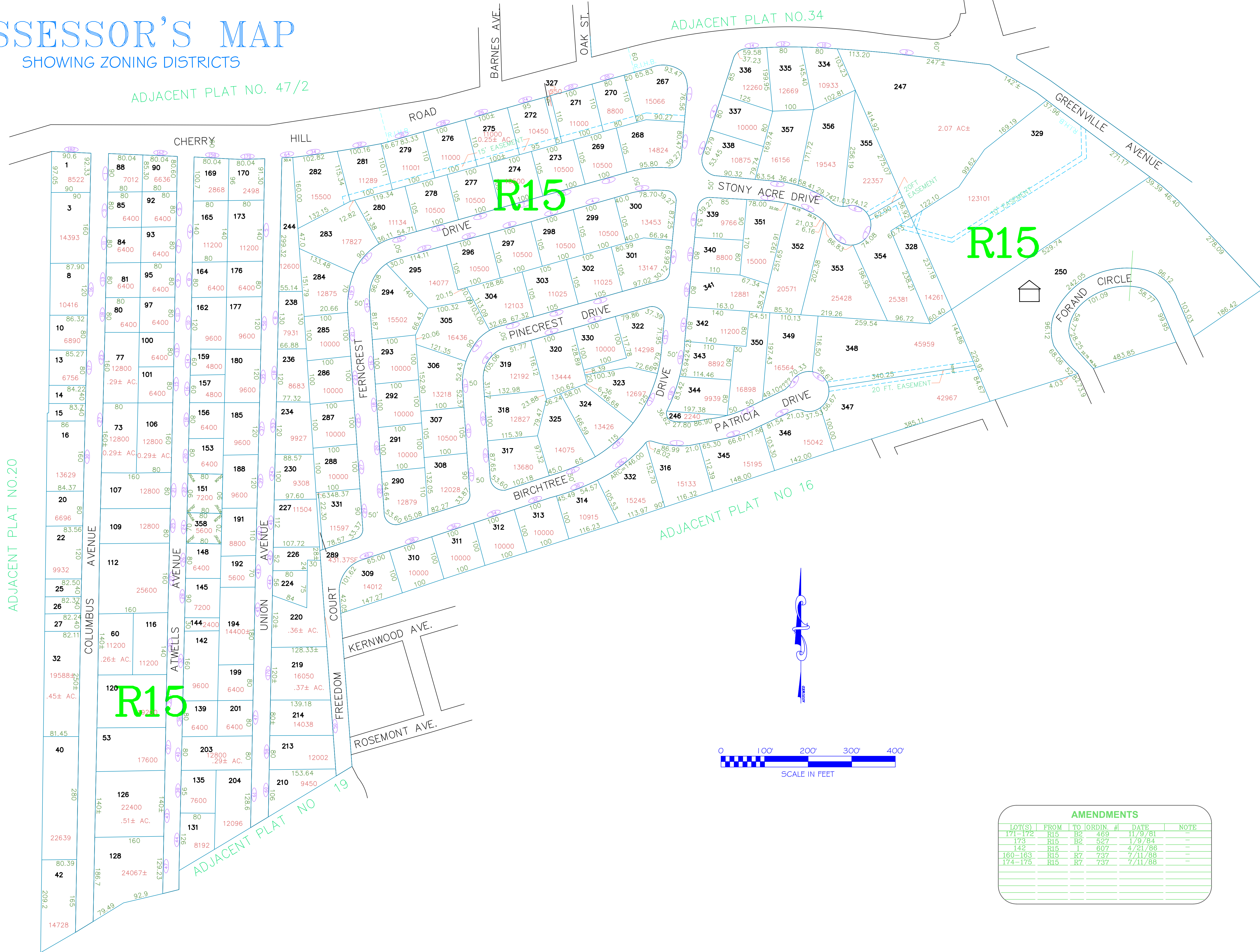


ASSESSOR'S MAP

SHOWING ZONING DISTRICTS

ADJACENT PLAT NO. 47/2



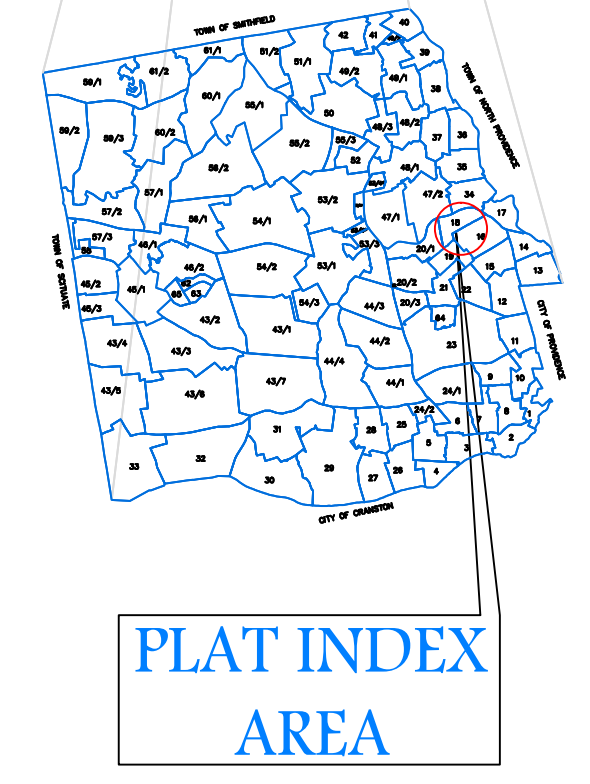
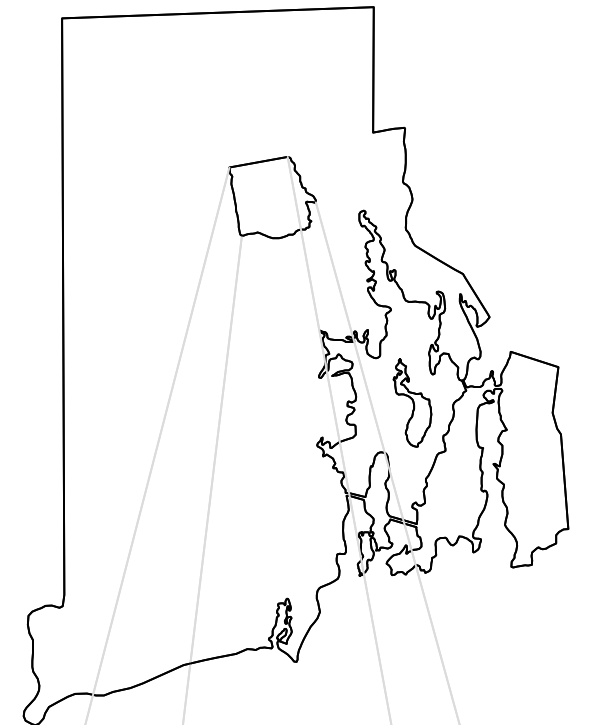
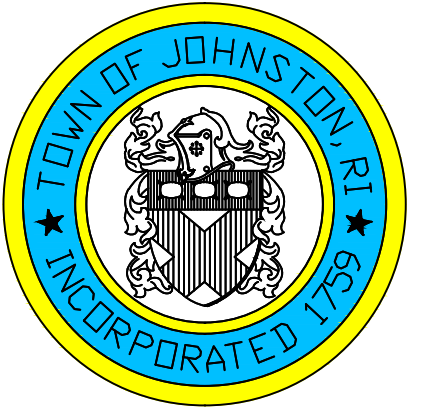
Assessor's Plat Number

18

STATE OF RHODE ISLAND
TOWN OF JOHNSTON

PROVIDENCE COUNTY
INCORPORATED 1759

ASSESSOR'S OFFICE
1385 HARTFORD AVENUE
JOHNSTON, RHODE ISLAND
02919



PLAT INDEX
AREA

Scale: 1:100

Revised By: Benjamin Ng

Last updated: January 04, 2016

Date printed: January 04, 2016

AMENDMENTS					
LOT(S)	FROM	TO	ORDIN. #	DATE	NOTE
171-172	R15	B2	469	11/9/81	-
173	R15	B2	527	1/9/84	-
142	R15	T	607	4/21/86	-
160-163	R15	R7	737	7/11/88	-
174-175	R15	R7	737	7/11/88	-

For copies of plat maps, please go to the DPW at 100 Irons Avenue Johnston Rhode Island. Thank you.

NOTE: This map was prepared for the use of the Town of Johnston for assessment and illustrative purposes only. It does not represent a survey of the premises. No liability is assumed as to the sufficiency or accuracy of the data delineated hereon.