



**National
Farmers
Union**

Visit nfu.org to learn more
UNITED TO GROW FAMILY AGRICULTURE

The Farmer's Share

Did you know that farmers and ranchers receive only 14.8* cents of every food dollar that consumers spend? According to the USDA, off farm costs including marketing, processing, wholesaling, distribution and retailing account for more than 80 cents of every food dollar spent in the United States.

Bacon

1 lb.



Retail: \$4.99
Farmer: \$0.61

Top Sirloin Steak

1 lb.



Retail: \$8.99
Farmer: \$1.92

Bread

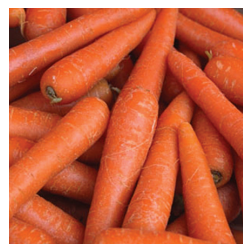
2 lbs.



Retail: \$3.49
Farmer: \$0.13

Fresh Carrots

5 lbs.



Retail: \$4.49
Farmer: \$1.37

Beer

6-pack cans



Retail: \$8.99
Farmer: \$0.04

Cereal

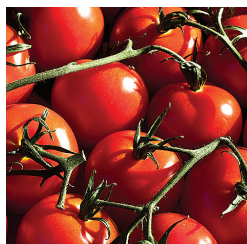
18 oz. box



Retail: \$4.89
Farmer: \$0.09

Tomatoes

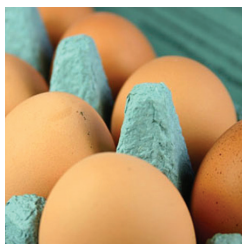
1 lb.



Retail: \$4.49
Farmer: \$0.26

Eggs

1 dozen



Retail: \$2.19
Farmer: \$1.20

Flour

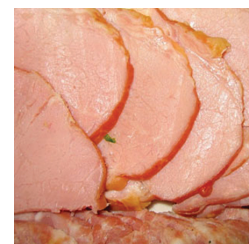
King Arthur, 5 lbs.



Retail: \$6.09
Farmer: \$0.44

Boneless Ham

1 lb.



Retail: \$3.99
Farmer: \$0.61

Lettuce

1 lb.



Retail: \$2.79
Farmer: \$0.26

Milk

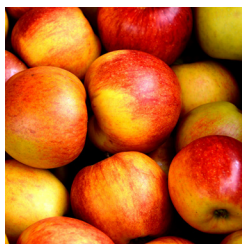
1 gallon, fat free



Retail: \$4.49
Farmer: \$1.36

Fresh Apples

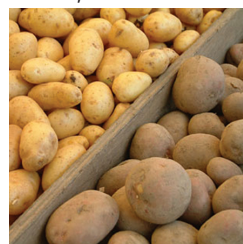
1 lb.



Retail: \$2.19
Farmer: \$0.33

Fresh Potatoes

Russet, 5 lbs.



Retail: \$4.49
Farmer: \$0.56

Soda

2 liters



Retail: \$2.19
Farmer: \$0.05

Farmer's share derived from USDA, NASS "Agricultural Prices," 2018 | Prices based on April 2018 data.

Retail prices based on Safeway (SE) brand except where noted. | *Figure according to U.S. Department of Agriculture Economic Research Service

May 30, 2018



/nationalfarmersunion



@NFUDC



/nationalfarmersunion



nfu.org/topics/blog



National Farmers Union | 20 F Street NW, Suite 300 | Washington, DC 20001

P: (202) 554-1600 | F: (202) 554-1654 | www.NFU.org | info@nfudc.org