

PARIS A LA PLEIADES

The purpose of this illustration is to suggest that the Champ Elysees ley-line is an encrypted motif of the Tree of Life with a Serpent running through the main energy points. The Tree of Life specifically composes the extension from the Louvre crystal Pyramid to the Porte Maillot. This proportion also approximates the phi ratio proportions as the Obelisk of the Place de la Concorde is the center of the spiral phi ratio when the Arc De Triomphe renders a proportion relative to the start of the body of the Owl Molech in the Louvre gardens. This study will show that these ley-lines are associated to key energies as several key numerical coefficients are highlighted. For example the Tree of Life motif as specifically laid out in the Champ Elysees is replicated almost exactly as the main avenue of the city core of Philadelphia, USA. The Museum of Art is patterned after the Louvre. The Tree of Life motif is highly esteemed by the Luciferians as a throwback to the Garden of Eden when Lucifer as the Shining One, the Serpent beguiled the first humans in the Tree. At that point in time, Eternal Life was forfeited due to the deception of Satan. This is not to say that all those inhabitants that live in such Luciferian world capitals are accomplices. The Luciferian places of habitation are replete with their occultic numerology, sacred geometry and demonic energies that does influence events and people at certain places and at certain times when infused to coincide with certain key ley-lines when invoked with ritualistic blood-letting sacrifices. In this particular Tree of Life and Serpent ley-lines portrays the financial center of Paris with the Arche De La Defense as the Pleiades as the 'head'. The Champ Elysees and Louvre complex is the Tree of Life as part of the Serpent body.

One of the probable reasons why the Pentagram is used and incorporated in such Luciferian world capitals is because it represents the number 5. This sacred geometric motif is the one geometric design layout that can reproduce itself endlessly and exactly. It basically has the power of reproduction and 'immortality' that the Luciferians seek to control and be the masters of, Eternal Life itself. This is in part their Great Work.

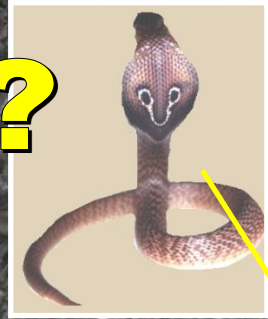
The Serpent, Cobra depiction infused with the Tree of Life is also superimposed by the Owl configuration that is suggested to be another one of the Luciferian's signature occultic grid formations. The image is that the Owl is at the apex of the Tree of Life or on top of the 'Pyramid' as the All Seeing Eye of Horus, the Eye of Lucifer. This motif is exactly replicated in Washington DC layout to include its Obelisk, the Washington Monument

333 km

to Shard Tower

333°

Heading
City of London



Grand Arche
De La Defense



Φ THE GOLDEN RATIO
 $\phi/\pi \times 365 \text{ DAYS} = 188$

~7 km

OWL MOLECH



COBRA
Serpent

~33 arcseconds

~1.3 miles

~3.32 km

Île de la Cité

Île San Louis

CHAMP ELYSEES LEY-LINE

the 'HEAD'

The sacred ley-lines of the Camp Elysees suggests that perhaps the incorporation of the Tree of Life motif is depicting the 'Serpent' that runs through the energy points. The suggested outline depict this very notion of a Serpent design but specifically that of a cobra. This would hold also to the Egyptian iconography of the respective pyramid, pentagrams layouts throughout the city core.



PYRAMID

FINANCIAL DISTRICT

Tree of Life

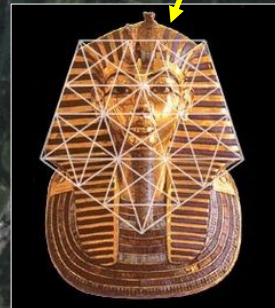


The Tree of Life with the Serpent running through it is highly suggestive but it is a very encrypted motif that is a favorite signatures of the Luciferians. As the theme of the Paris core city layout is thematic of the Egyptian gods, it would not be that far-fetched in insinuating that the Serpent rendered is in fact a Cobra.

The Luxor Obelisk is the Egyptian obelisk that was originally located at the entrance to the Luxor Temple, in Egypt. The column was acquired as a 'gift' from Egypt but many antiquities have been acquired by the exploits of Napoleon in the invasion of the Middle East, Egypt, the Levant, etc. This is the very Temple of Man that the Louvre complex is suggested to be laid out to. This Obelisk was positioned exactly on the Winter Solstice.



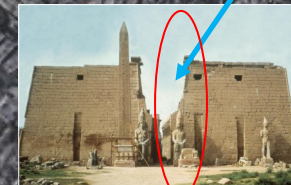
Cobra



TOUR EIFFEL

CHAMP DE MARS
PARIS, FRANCE

L'Obélisque



The Statue of Liberty that was given to America by the French Masons is an example of a fusion of Isis and Orion. It is a monument to Lucifer the Light Bearer. He is worshiped by the Luciferians as the coming Osiris. That will be resurrected in the New World Order of the Golden Dawn of Atlantis.

3

Île aux Cygnes



5 of 10

© Composition & Some Graphics by
LUIS B. VEGA

vegapost@hotmail.com
www.PostScripts.org

FOR ILLUSTRATION PURPOSES ONLY

SOME SOURCES

GoogleEarth.com
Wikipedia.com

FORT DU MONT VARLERIEN

48°52'42.80" N 2°16'52.29" E elev 127 ft eye alt 38452 ft