



# J & G SALES, INC.

## PILE DRIVING EQUIPMENT

RENTALS \* SALES \* PARTS \* SERVICE

PO Box 547, Bellville, TX 77418 \* 11195 Hwy 159 East, Bellville, TX 77418  
 Toll Free (800) 842-7622 \* P (979) 865-4300 \* F (979) 865-4303 \* www.jgsalesinc.com

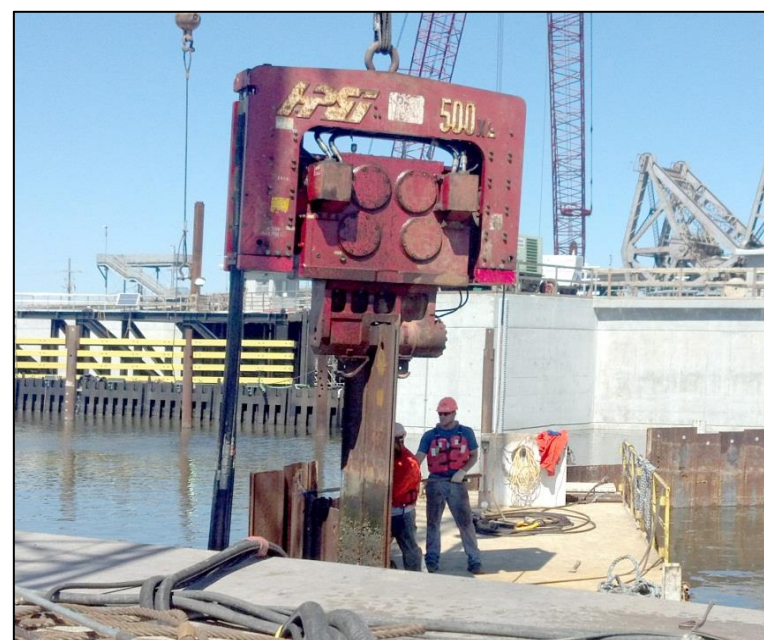


# Model 500

Model 500 Exciter	Specifications	
	US	Metric
Eccentric Moment (In/Lbs, Kgm)	5000	58
Dynamic Force (Tons, Tonnes)	182	165
Frequency (VPM)	1600	1600
Amplitude (Inches, Mm)	1.12	28.5
Pile Clamp Force (Tons, KN)	200	1780
Maximum Crane Pull (Tons, KN)	75	667
Length (Inches, Mm)	102	2590
Width @ Throat (Inches, Mm)	14	356
Height (Inches, Mm)	102	2590

Model 500 Power Unit	Specifications	
	US	Metric
Engine	C18 CAT	
Power (HP, KW)	700	522
Speed (RPM)	2100	2100
Operating Pressure (PSI, BAR)	5000	345
Flow (GPM, LPM)	202	764
Length (Inches, Mm)	184	4674
Width (Inches, Mm)	66	1676
Height (Inches, Mm)	103	2616

WEIGHTS for MODEL 500			
POWER UNIT		Shipping Weight	Suspended Weight
			19,000
EXCITER		Shipping Weight	Suspended Weight
		Sheeting Clamp	200 Ton
Caisson Beam	7 ft	26,480	25,480
	10 ft	28,100	27,100
	11 ft	28,640	27,640
	13 ft	29,720	28,720
	14 ft	30,260	29,260



J & G Sales, Inc. is a Distributor of  
 HPSI Vibratory Hammers, Augers & Accessories