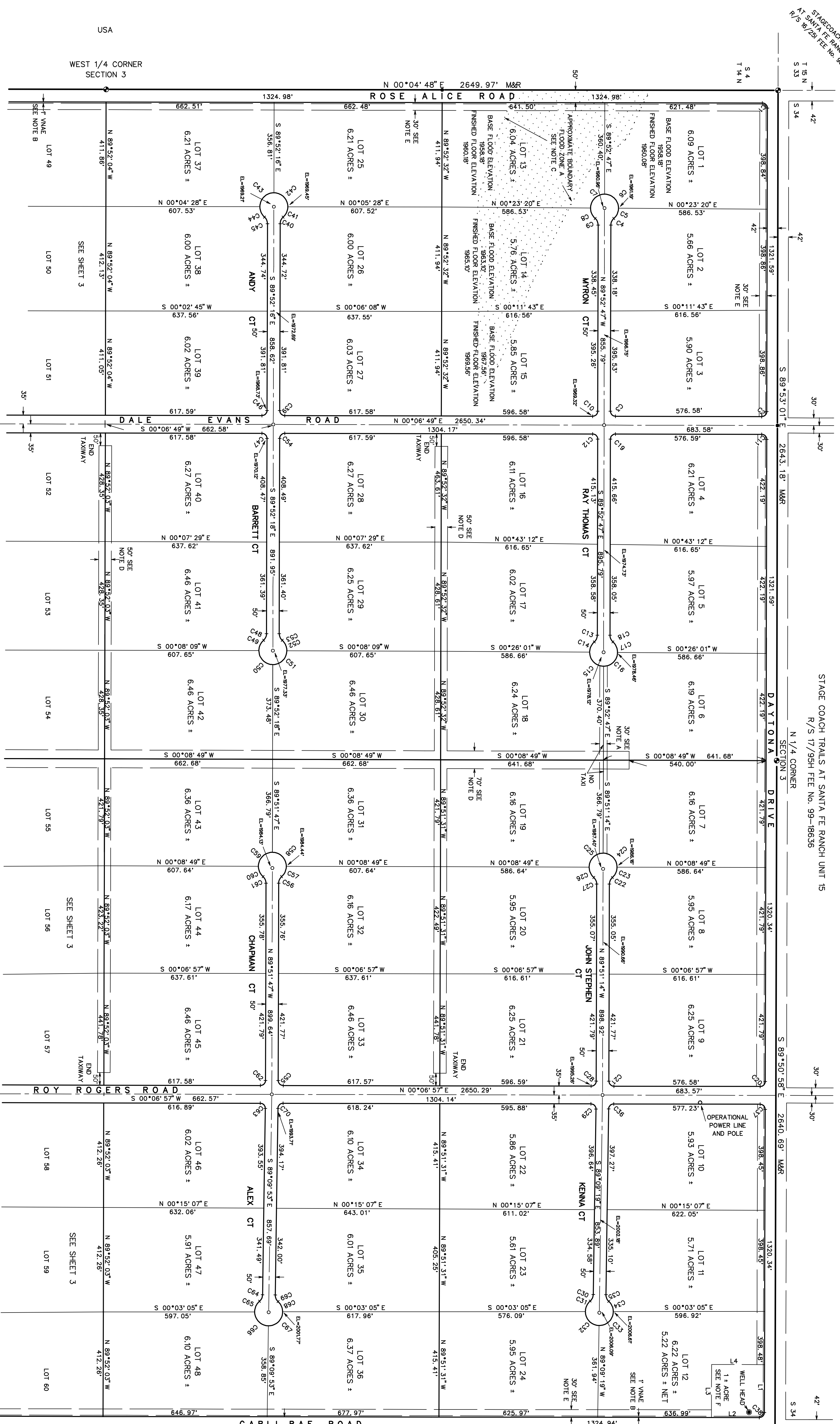


FIRST AMENDED FINAL PLAT
SAGEBRUSH TRAILS ESTATES, TRACT 3815, SITUATE IN SECTION 3, TOWNSHIP 14 NORTH, RANGE 17 WEST OF THE
GILA AND SALT RIVER MERIDIAN, MOHAVE COUNTY, ARIZONA

STAGECOACH TRAILS 6
 AT SANTA FE RANCH UNIT 15
 R/S 16/251 FEE NO. 88-743

STAGE COACH TRAILS AT SANTA FE RANCH UNIT 15
 R/S 17/95H FEE NO. 99-18536

SECTION 3 (S 1/2)
 FEE NO. 99-05080
 R/S 16/251



LINE	BEARING	DISTANCE
L 1	S 89°50'58" E	188.68'
L 2	S 89°05'58" W	188.98'
L 3	N 89°50'58" W	208.94'
L 4	N 89°05'04" E	208.94'

NOTE A: 200-FOOT WIDE PUBLIC UTILITY EASEMENT GRANTED BY THIS PLAT TO THE STATE OF ARIZONA FOR THE CONSTRUCTION AND MAINTENANCE OF ROADWAYS ADJACENT TO THE EAST AND WEST SECTION LINES DEDICATED HEREIN AT A WIDTH OF 42-FEET. DAYTONA ROAD DEDICATED HEREIN AT A WIDTH OF 42-FEET. THE INTERIOR NORTH-SOUTH ROADWAYS DEDICATED HEREIN AT A WIDTH OF 70-FEET. THE INTERIOR EAST-WEST ROADWAYS DEDICATED HEREIN AT A WIDTH OF 50-FEET. ALL ROAD WIDTHS PER MOHAVE COUNTY DEPARTMENT OF PUBLIC WORKS. ○ DENOTES LOCATION OF UNDERGROUND POWER POLE. ○ DENOTES THE TOP OF A US GEOLOGIC BRASS CAP MONUMENT BEING THE NORTHEAST CORNER OF SECTION 3, ELEVATION 2014.00'

NOTE C: AREA SHOWN IS THE APPROXIMATE BOUNDARY OF FLOOD ZONE A AS SHOWN ON THE UNPUBLISHED U.S. DEPARTMENT OF HOUSING AND URBAN DEVELOPMENT FLOOD HAZARD BOUNDARY (FHB) MAP, PANEL DIXIA, FLOOD ZONE A IS DEFINED AS AREAS OF HOUSING AND URBAN DEVELOPMENT WITH A 1% ANNUAL CHANCE OF FLOODING. FLOOR ELEVATIONS HAVE BEEN CALCULATED AND ARE SHOWN FOR THE EFFECTED LOTS. THE REMAINDER OF THE SUBJECT PROPERTY LIES IN FLOOD ZONE C. DENIED AS: AREAS OF MINOR FLOODING, THE REMOVAL OF THIS FLOOD PRONE AREA IS FOR INFORMATIVE PURPOSES ONLY AND NOT INTENDED TO BE DEFINITIVE. ANY QUESTIONS REGARDING FLOOD BOUNDARIES, DEPTH OR HAZARDS MUST BE REFERRED TO THE MOHAVE COUNTY FLOOD MANAGEMENT OFFICE.

NOTE D: A 70-FOOT WIDE RUNWAY EASEMENT AND 50-FOOT WIDE TANKWAY EASEMENTS AS SHOWN HEREON ARE GRANTED BY THIS PLAT TO THE MOHAVE COUNTY DEPARTMENT OF PUBLIC WORKS ON NOVEMBER 3, 2008, BASED ON RESOLUTION 2008-344 GRANTED BY THIS PLAT.
 NOTE E: A 30-FOOT WIDE UTILITY EASEMENT AS SHOWN HEREON, GRANTED BY THIS PLAT TO THE MOHAVE COUNTY DEPARTMENT OF PUBLIC WORKS.
 NOTE F: AN EASEMENT RESERVED FOR THE EXPANSION OF UTILITIES GRANTED BY THIS PLAT TO THE MOHAVE COUNTY DEPARTMENT OF PUBLIC WORKS.

JOB NO. 1976-08
 PREPARED BY: RAY POWELL
 FOR: CARLTON+SONS-NIELSON-ASSOCIATES
 LANCE HAVISU C177, AZ 86404
 528-764-2508

DATE: DEC 2008
 SHEET 2 OF 4

REGISTERED LAND SURVEYOR
 NO. 1210
 JEFFERY S. JEFFERSON
 MOHAVE COUNTY, ARIZONA
 EXPIRES JUNE 30, 2011

CARLTON+SONS-NIELSON-ASSOCIATES
 511 EAST ANDY DEVINE (P.O. BOX 110)
 KINGMAN, ARIZONA 86401 (928) 753-4647