

L.B.J.&C B Clarkrange Head Start 2025-2026 Daily Schedule Classroom A



7:00 a.m.-8:00 a.m.

8:00 a.m.-8:15 a.m.

8:15 a.m.-8:30 a.m.

8:30 a.m.-9:00 a.m.

9:00 a.m.-10:15 a.m.

10:15 a.m.-11:15 a.m.

11:15 a.m.-11:30 a.m.

11:30 a.m.-12:00 p.m.

12:00 p.m.-12:15 p.m.

12:15 p.m.-12:30 p.m.

12:30 p.m.-1:45 p.m.

1:45 p.m.-2:00 p.m.

2:00 p.m.-2:15 p.m.

2:15 p.m.-2:30 p.m.

Teacher Planning Time

Greet Parents and Children/ Free Choice
Activities/Individualization

Large Group Time/ Preparation For
Family Style Meal Service

Breakfast

Clean-Up/Free Choice
Activities/Individualization/Brush
Teeth

Outdoor Play (Gross Motor
Activities)

Transition/Large Group Time/Preparation For
Family Style Meal Service

Lunch

Clean-up/Brush Teeth/Large Group
Time

Small Group Activities

Transition to Rest Time/Rest Time

Transition to Snack

Snack

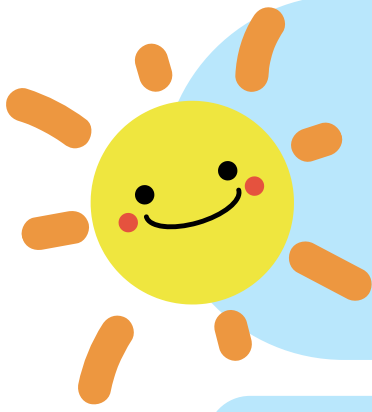
Clean-up/Departure

Inclement weather schedule:

Gross Motor Moderate to Vigorous Physical
Activities in the Big Room or Structure Gross
Motor Activities in Classroom



Revised 7/25



L.B.J.&C Clarkrange

Head Start

2025-2026 Daily Schedule

Classroom B



7:00 a.m.-8:00 a.m.

8:00 a.m.-8:15 a.m.

8:15 a.m.-8:30 a.m.

8:30 a.m.-9:00 a.m.

9:00 a.m.-9:15 a.m.

9:15 a.m.-10:15 a.m.

10:15 a.m.-11:15 a.m.

11:15 a.m.-11:30 a.m.

11:30 a.m.-12:00 p.m.

12:00 p.m.-12:15 p.m.

12:15 p.m.-12:30 p.m.

12:30 p.m.-1:45 p.m.

1:45 p.m.-2:00 p.m.

2:00 p.m.-2:15 p.m.

2:15 p.m.-2:30 p.m.

Teacher Planning Time

Greet Parents and Children/ Free Choice
Activities/Individualization

Large Group Time/ Preparation For
Family Style Meal Service

Breakfast

Clean-up/Group time

Outdoor Play (Gross Motor
Activities)

Free Choice
Activities/Individualization/Brush
Teeth

Transition/Large Group Time/Preparation For
Family Style Meal Service

Lunch

Clean-up/Brush Teeth/Large Group
Time

Small Group Activities

Transition to Rest Time/Rest Time

Transition to Snack

Snack

Clean-up/Departure

Inclement Weather Schedule:



Gross Motor Moderate to Vigorous Physical
Activities in the Big Room or Structure Gross
Motor Activities in Classroom



Revised 7/25