

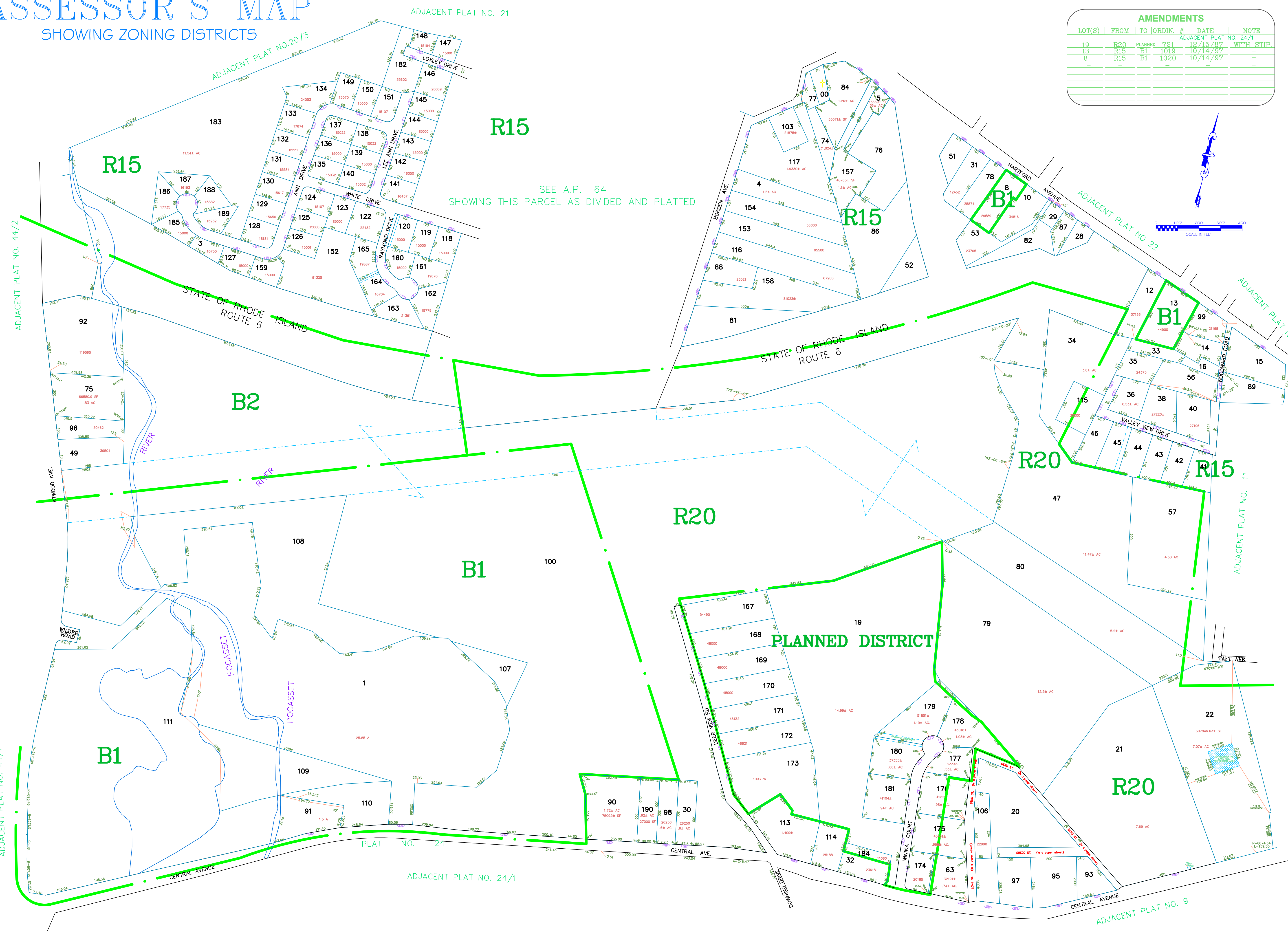
ASSESSOR'S MAP

SHOWING ZONING DISTRICTS

ADJACENT PLAT NO. 21

ADJACENT PLAT NO. 20/3

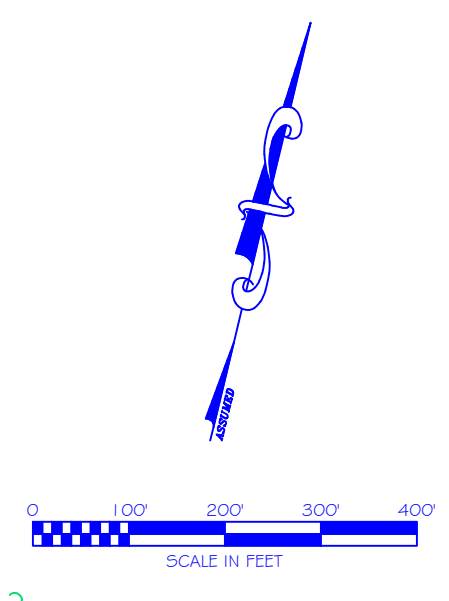
AMENDMENTS					
LOT(S)	FROM	TO	ORDIN. #	DATE	NOTE
19	R20	PLANNED	721	12/15/87	ADJACENT PLAT NO. 24/1
13	R15	B1	1019	10/14/97	WITH STIP.
8	R15	B1	1020	10/14/97	



R15

SEE A.P. 64
SHOWING THIS PARCEL AS DIVIDED AND PLATTED

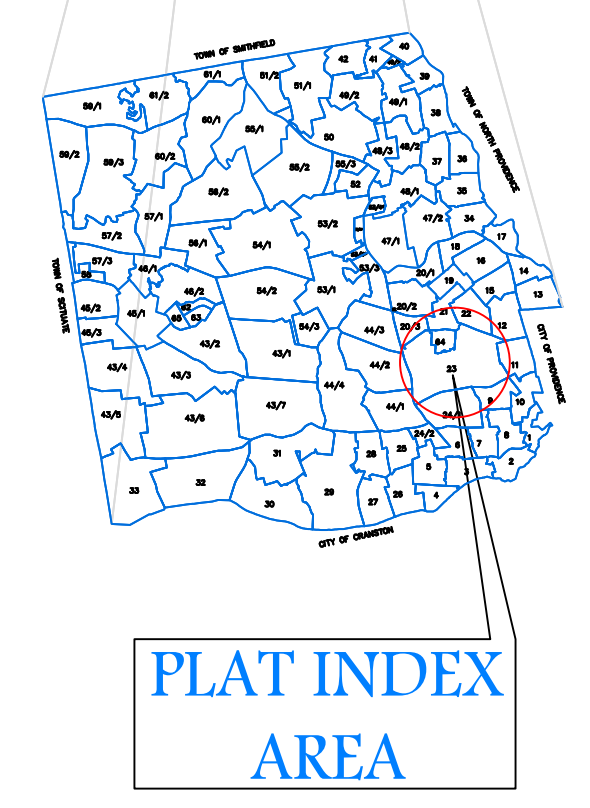
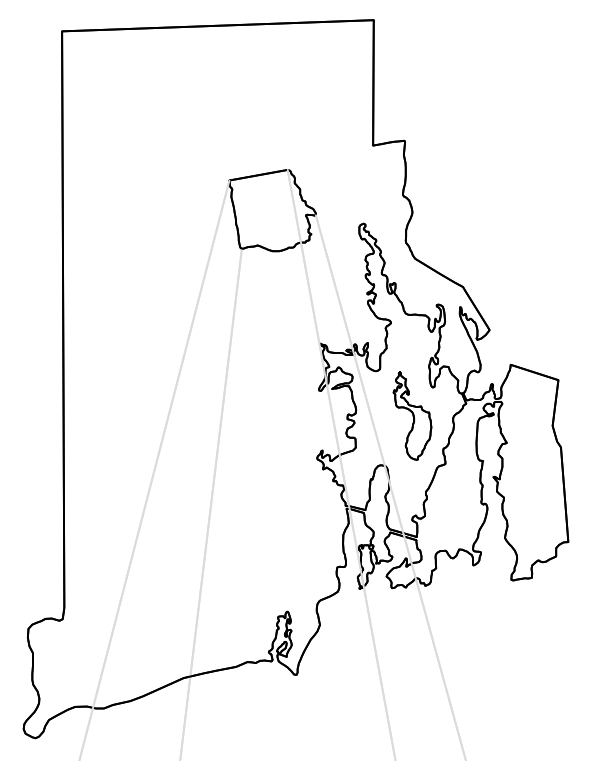
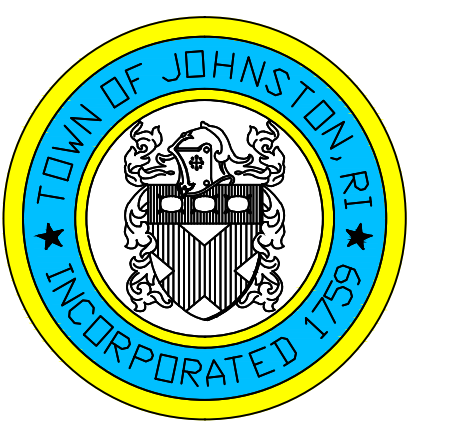
PLANNED DISTRICT



Assessor's Plat Number

23

STATE OF RHODE ISLAND
TOWN OF JOHNSTON
PROVIDENCE COUNTY
INCORPORATED 1759
ASSESSOR'S OFFICE
1385 HARTFORD AVENUE
JOHNSTON, RHODE ISLAND
02919



Scale: 1:200
Revised By: Benjamin Ng
Last updated: January 04, 2016
Date printed: January 04, 2016

For copies of plat maps, please go to the DPW at 100 Irons Avenue Johnston Rhode Island. Thank you.

NOTE: This map was prepared for the use of the Town of Johnston for assessment and illustrative purposes only. It does not represent a survey of the premises. No liability is assumed as to the sufficiency or accuracy of the data delineated hereon.