

ROTARY MAGNETRON SPUTTER CATHODE

High Performance Industrial Design

- Dual-Stage Ferro-Fluid Seal
- Ceramic Rotary Water Seal
- Up to 75% Target Utilization
- 12-Month Limited Warranty



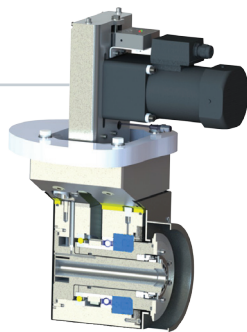
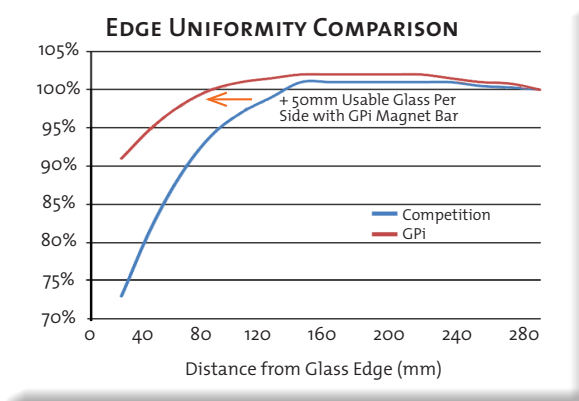
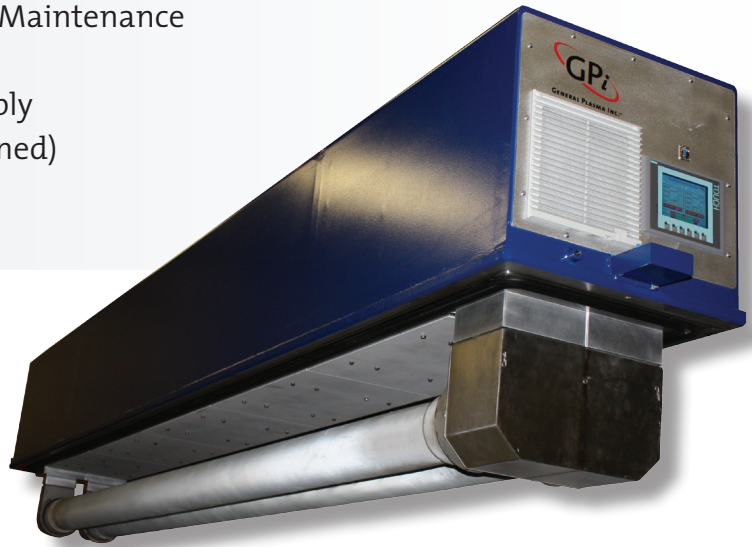
GENERAL PLASMA INC.™

www.generalplasma.com

546 E. 25th St • Tucson • AZ • 85713 • USA • Tel: 520 882 5100 • Fax: 520 882 5165 • Email: sales@generalplasma.com

GENERAL PLASMA INTRODUCES IMPROVED ROTARY MAGNETRON CATHODE CATHODE

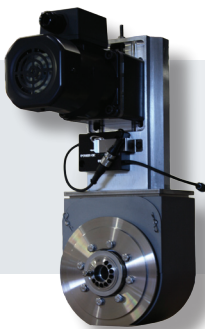
- Long Production Lifetime with Minimal Maintenance
- High Water Flow Throughput
- High Quality Integrated Brushes Assembly
- Simple Target Requirement (non-dogboned)
- Excellent Uniformity Zone
- Up to 3.8m Target Length Installation



SUPERIOR VACUUM AND WATER SEAL TECHNOLOGY

- Dual-Stage Ferro-Fluid Vacuum Seal
- Independent Oversized Support Bearings
- Ceramic Rotary Water Seal

TWO END BLOCK CONFIGURATIONS AVAILABLE



COMPACT END BLOCK

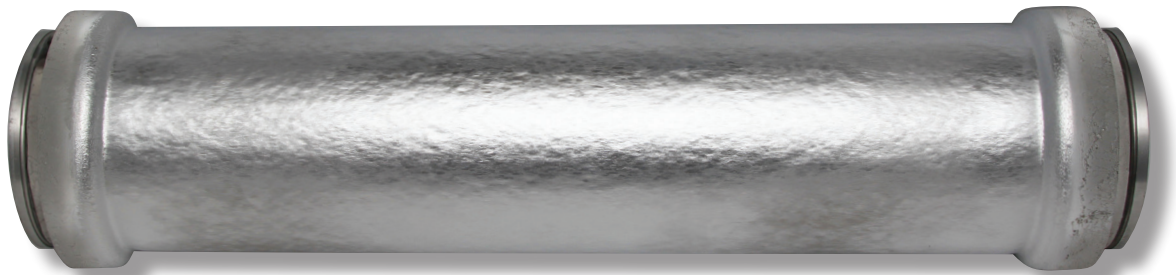
- Maximize Target Length in Chamber Up to 2m
- Retrofittable for Planar Magnetrons

STANDARD END BLOCK

- Target Tube Length > 3m
- Retrofittable to Existing Glass Coaters
- Dual Stage Ferro-Fluid Seal

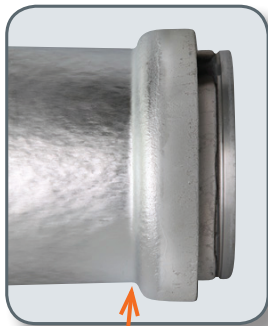


HIGH PERFORMANCE MAGNET BAR



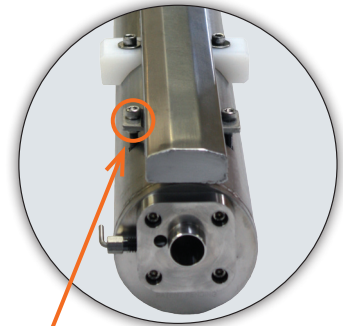
Fully Utilized Target Tube
Up to 75% Target Utilization

ADVANCED MAGNETIC DESIGN

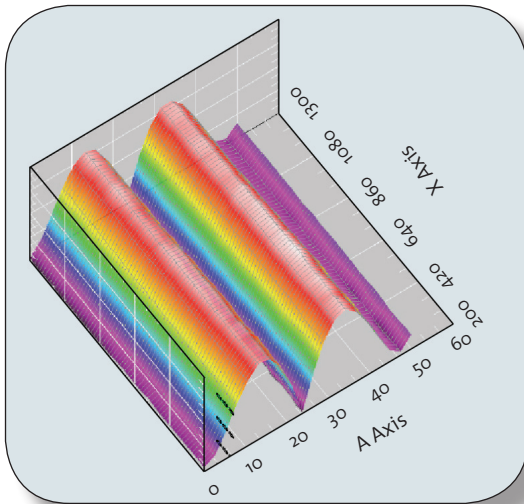


Minimal Turnaround
Groove

- Focused Field Magnetics Improves Deposition Efficiency
- High Strength Magnets Sealed in Leak Free Stainless Steel Pouch
- Rigid, Robust Design



Fine Adjustment for Excellent
Magnetic Uniformity

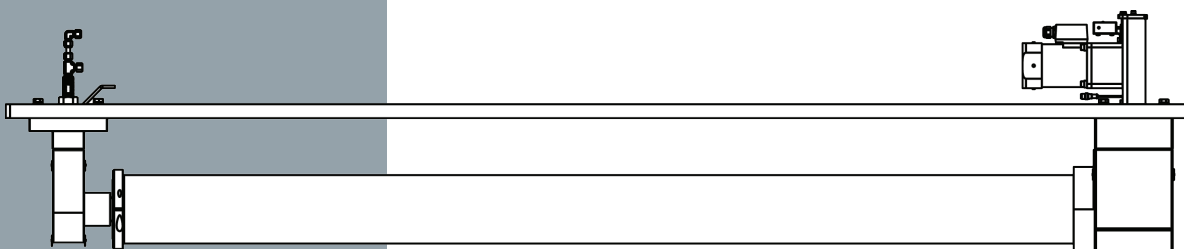


Measurement Tool Output
3D Graph of Actual B Field

- Replaces Competitor Rotary Magnetrons
- Advanced Magnetic Arrays
- Every Pack Measured and Mapped in 3D for Uniformity with Automated Hall Probe Station



ROTARY MAGNETRON



PRODUCT SIZES & SPECIFICATIONS

CATHODE POWER		
	STANDARD END BLOCK	COMPACT END BLOCK
MAX DISCHARGE CURRENT	320 A	160 A
MAX DISCHARGE POWER	120 kW	60 kW
MAX DISCHARGE VOLTAGE	1500 V [DC, PULSED DC, OR AC RMS]	
POWER CONNECTION	CABLE CLAMP, 1 AWG [55MM ²] MINIMUM WIRE SIZE	

SPUTTER UNIFORMITY	+/- 3%	
OPERATING PRESSURE	2.6 x 10 ⁻³ MBAR [2mT] - 1.3 x 10 ⁻² MBAR [10mT]	

COOLING WATER		
	STANDARD END BLOCK	COMPACT END BLOCK
DRIVE WATER CONNECTION	1" FEMALE JIC FITTING / 37°	3/4" FEMALE JIC FITTING / 37°
DRIVE WATER FLOW	150 LPM [40GPM]	75 LPM [20GPM]
BRUSH WATER CONNECTION	3/8" COMPRESSION FITTING	1/2" COMPRESSION FITTING
BRUSH WATER FLOW	15 LPM [4GPM]	
WATER SUPPLY TEMPERATURE	15°C - 40°C [60°F - 105°F]	
WATER SUPPLY MAXIMUM PRESSURE	7 BAR [100 PSI]	
WATER SUPPLY ELECTRICAL RESISTANCE	850 KΩ-CM MINIMUM	
PIPE / HOSE MINIMUM SUPPLY SIZE	DRIVE - 20MM ID [1"] BRUSH - 10MM OD [3/8"]	DRIVE - 19MM ID [3/4"] BRUSH - 12MM OD [1/2"]

ROTATION MOTOR		
	STANDARD END BLOCK	COMPACT END BLOCK
POWER REQUIREMENT	200 - 230 VAC 3Φ, 50/60 Hz, 200W	200 - 230 VAC, 3Φ, 50/60 Hz, 90W
RATED OUTPUT SPEED	13 RPM [50Hz] / 15 RPM [60Hz]	15 RPM [50Hz] / 18 RPM [60Hz]
CONNECTION	TERMINAL BOX	

TARGET TUBE		
	STANDARD END BLOCK	COMPACT END BLOCK
BACKING TUBE MATERIAL	18-8 STAINLESS STEEL (NON-MAGNETIC)	
STOCK DIMENSIONS	125MM ID, 133MM OD	
REFERENCE DRAWING	R0000L005	

FOR INQUIRIES, PLEASE CONTACT:



GENERAL PLASMA INC.™

TEL: 520 882 5100

FAX: 520 882 5165

EMAIL: SALES@GENERALPLASMA.COM

All dimensions are approximate and subject to change.

General Plasma is an innovation leader in vacuum thin film coating. GPI's patented and patent pending plasma inventions provide superior performance for applications such as solar energy, architectural glass, data storage and scientific research.

Contact GPI for your ion source, sputter magnetron, and PECVD solutions today!