

Publication: <a href="#">Pre-hospital triage criteria for burns patient destination</a>
Description: Flowchart to aid decision making of burns patient destination in the pre-hospital setting
Publication date: February 2019    Review date: May 2023 Review next due: May 2026    Ref No 5
Author: Midlands Trauma and Burns Networks
Circulation: WMAS, Midlands Trauma and Burns Network Providers
Superseded document(s):
Contact details for further information: Midlands Critical Care, Trauma and Burns Networks 15 Frederick Road Birmingham B15 1JD <a href="http://www.mcctn.org.uk">www.mcctn.org.uk</a>
Document status: Whilst this document may be printed, it cannot be controlled, the electronic version posted on MCCTN website is the controlled document.

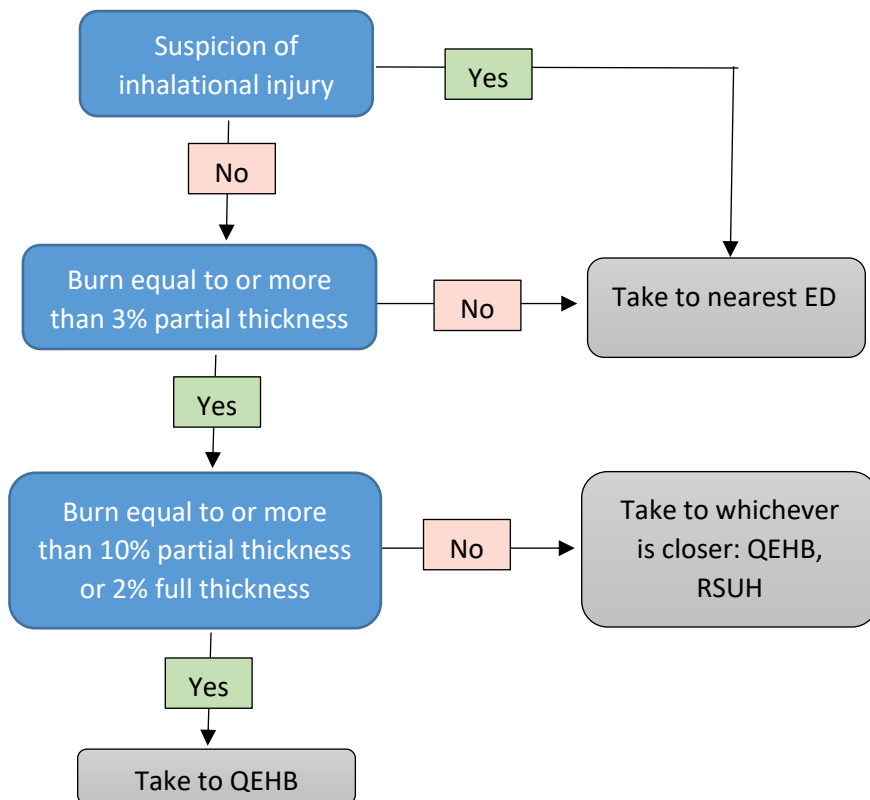
**Amendments to previous version**

7.4.20 Removal of UHCW from options in 'take to whichever is closer' box.    CL

## Pre-hospital triage criteria for burns patient destination

Queen Elizabeth Hospital Birmingham (QEHB) and Birmingham Children's Hospital (BCH) are the regional burns centres for adults (>16) and paediatrics (<16) respectively. This flowchart is designed to help pre-hospital practitioners make the right decision about hospital destination for isolated burns. **Where patients have a combination of burns and other traumatic injuries, the trauma desk should be called for advice as to whether this flowchart, or the major trauma triage tool, should be followed.** **Note: If patient is RSI'd take to the regional burn centre as the airway is secured.**

### Adults (≥16)



### Children (<16)

