

*Since 1948 Exploring the Wonderful World of Beekeeping Together*

## **The Bee Buzzer**

*Monthly Publication of the*

### **Northeastern Kansas Beekeepers' Association**

VOLUME 77, NUMBER 6

EDITOR: TIM MARSHALL

June 2025

#### **General Meeting**

**Monday, June 16th, 2025 (7:00 p.m.)**

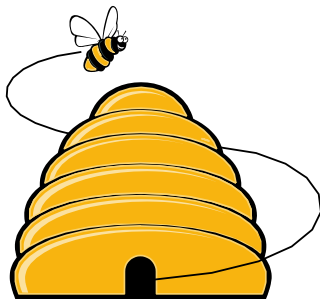
Douglas County Fairgrounds Bldg. 21N

2110 Harper St., Lawrence KS

**Main Program: Creamed Honey by Joli Winer** – Joli has been keeping bees and selling bee products for several years. Don't miss the opportunity to learn and gain insight from her real-world experience, bee keeping or bee products don't always go by the book. This meeting topic had been scheduled for last month but had to be cancelled due to inclement weather concerns. Creamed honey is a controlled crystallization process, that results in a product that is easy to use and enjoy, making it popular. It's a wonderful value-added.

#### **Beelines**

##### **By President Cheryl Burkhead**



Despite a torrential downpour late morning, the weather turned out quite lovely for our 32nd Annual Fun Day. The clouds parted and the sun shone brightly for the bee beard competition directed by Dr. Judy Wu-Smart and Amy Vu. We had a good crowd and some new faces in attendance. Thank you to all who worked tirelessly to make this day successful. It takes many people to pull off an event such as this and Joli Winer and the planning committee met frequently over the past year. Special thanks to Cecil Sweeney for bringing hives and to Dale & Dixie Spurlin for their exhaustive work in the kitchen to make the food/beverage lines run smoothly. I hope those of you who attended enjoyed yourselves and learned a lot. The homemade honey ice cream was a hit once again!

My Littleleaf Lindens are blooming, and the trees are a buzz with honey bees and other pollinators. If you are searching for another addition to your landscapes, I'd highly recommend you plant one this fall.

The weather finally looks to dry out in time for our main event in northeast Kansas, white sweet clover. We've had ample moisture and the ponds are full. Hopefully your colonies are ready to take advantage of this favorable weather. Make sure to check your colonies and stay ahead of your bees and give them room to bring in all that nectar. The ticks are terrible so take precautions!

NEKBA's Open Apiary and our monthly meetings are the best way to continue to grow and learn as a beekeeper. Take advantage of all that this club has to offer! Consider volunteering or embracing a role as a club officer. We will have several positions opening this fall so please consider a more active role in your organization.



### 2025 Meeting Dates:

- June 16<sup>th</sup>, Monthly Meeting, 7pm
- July 3<sup>rd</sup>, Joli and Cecil's Open Apiary at 5:00pm
- July 6<sup>th</sup>, Open Apiary at Pendleton's at 1pm
- July 14<sup>th</sup>, Open Apiary at Pendleton's at 5pm
- July 14<sup>th</sup>, Monthly Meeting - Location TBD
- August 3<sup>rd</sup>, Open Apiary at Pendleton's at 1pm
- August 7<sup>th</sup>, Joli and Cecil's Open Apiary at 5:00pm
- August 18<sup>th</sup>, Open Apiary at Pendleton's at 5pm
- August 18<sup>th</sup>, Monthly Meeting, 7pm



### Ol' Bee Gal



Buzzy, busy, bee-utiful June! I love summer. I love to garden. I grow mostly vegetables but also flowers and LOVE seeing the pollinators visit the blossoms. I love the warm days and balmy nights. Walking through the bee yard at night; the smell of the ripening honey is nearly intoxicating. I love the cookouts and weddings and graduations parties, and celebrations of everything. This week I made honey ice cream for the Funday. The Funday is a June tradition! By the time you read this, that celebration will have come and gone but it's so much fun to see folks who have come for 30+ years. It's equally fun to introduce the Funday to new beekeepers who are just discovering the joys of beekeeping.

I'd like to thank all the new beekeepers who are trying to learn the craft and actually working at the challenge. Beekeeping can be extremely frustrating. Why did the bees do that? As much as we know, we often still don't know. The level of beekeeping frustration can probably be measured by the number of people looking for a replacement queen here in the middle of June. We should be at the peak of honey production and if your hive isn't queen-right, they aren't producing a honey crop. We hosted our open apiary last weekend and that was our focus. We had 3 hives that should have been filling supers, but they weren't. We got into them and, as we suspected, they had not requeened themselves after a swarm event. Bummer. Although we could have purchased mated queens and moved them into queen-right quicker, we gave them frames with swarm cells (yes, we were able to find 3 separate frames with capped swarm cells). We will check them again in 2 weeks and look for the elusive eggs, a sure sign of a queen-right colony. When we started doing open apiary we focused on our good hives—those who were behaving themselves and doing exactly what they are supposed to do. Now, we try to find at least one problem-child hive and use it for a 'teachable moment.' Pointing out my beekeeping failings is humbling but I hope everyone can learn from our mistakes. If you haven't been to an open apiary event and you are still struggling with hive inspections, come join us. NEKBA hosts open apiary several times each month at Pendleton market. Joli and Cecil have open apiary events at their home, too.

We received advertisements for some national conventions this last week. They are always opportunities to expand our understanding of beekeeping. Conventions can be a great way to spend time in January. Sign up early for discounted rates.

I'm going to offer a make-it/take-it soap making class on June 21st in Osage City. I'll be teaching both cold and hot processed soap, lotions, balms and butters made with beeswax and/or honey. If you are interested, message me for details.

**Becky Tipton**

### SUBSCRIBE TO A MONTHLY BEE MAGAZINE. STAY INFORMED.

[Bee Culture Magazine \(link\)](#)

[American Bee Journal \(link\)](#)

Use the links to subscribe directly...annual subscription rates under \$6 per month for both!

This is fantastic information right at your fingertips. As part of your beekeeping experience, it's important to be up to date with the trends in bee biology, honey processing, the industry, and much more!



## ASK QUINBY & REMI

**Dear Quinby and Remi:** I put my honey super on but so far there is no honey in it, what should I do?

**Quinby and Remi answer:** Look below in your hive body and make sure that all of those frames are drawn out. Don't be afraid to move your frames around. If you moved them in one space, and they didn't do anything with them, move them in one more frame space.

This time of year, since it is so warm out and it is so easy for the bees to keep the brood warm, you won't cause issues in the hive by moving frames around. The bees will go up into your super when they are full below.

**Dear Remi and Quinby:** I split my hives, gave them new queens and I bought some nucs with new queens, now everything is honey bound! Also, my hives are making new queens and getting ready to swarm! What's the deal!

**Remi and Quinby answer:** Oh my, many issues with bees are weather related and can be very frustrating, this year is one of those years! It is very hard to get mated queens this time of year. If you can see that some of those queen cells have opened ends, where virgins have emerged, let them go and get mated. If you tore out all your queen cells and you don't see any eggs in your hive or your queen, you have made your hive hopelessly queenless. They will not be able to requeen themselves; you need to find a queen to get in there. If you have a small swarm with a laying queen or resource nuc, you could add that to your hive.

Remi and Quinby have some advice about supering your hives. In honey supers, move filled nectar frames to the edges, so they are fully utilized. Also make sure and push your frames together in the center of the super so the bees don't build crazy comb. Hopefully, these warm days will stimulate the flowers to produce nectar, and the honey flow will pick up again. Be vigilant, bees can fill a super in a week, you don't want to miss out on a single drop! If your bees won't go up into your super (we can't believe we are saying this!), remove your queen excluder until the bees start working on the foundation and get a little honey stored. Then, look for the queen and make sure she is down in the hive body and put your queen excluder back on and then your super. The key is not to wait too long. As soon as the bees start working in the super, get your queen excluder back on!



## The NEKBA Beeyard

Join us this year at our Open Teaching Apiary (OTA) located at Pendleton's Country Market, 1446 E 1850 Rd., Lawrence KS 66046. Please use this link to sign up

<https://www.signupgenius.com/go/10C054DA9A72CA2FAC70-55554696-open> check out our NEKBA website at [www.nekba.org](http://www.nekba.org) for more information and schedule changes. For

questions call Joli at 913-593-3562.

OTA Dates (other dates may be added) Extra suits available. Sessions are like mini classes- we take you through a beehive and look at everything in the hive. We also answer questions about your hives. Each session includes monitoring for varroa mites.

Sunday, July 6	1:00-3
Monday, July 14	5:00-6:30
Sunday, August 3	1:00-3
Monday, August 18	5:00-6:30(Before the NEKBA meeting)
Sunday, Sept. 7	1:00-3
Monday, Sept. 15	5:00-6:30 (Before the NEKBA meeting)
Sunday, October 5	1:00-3
Monday, October 20	5-6:30



## Open Teaching Apiary in Spring Hill

Join Joli Winer and Cecil Sweeney for mentoring sessions one day a month. Please call, text or email to secure your spot. Sessions start at 5:00 pm, about 2 hours. 19201 S Clare Rd Spring Hill KS 66083 913-593-3562 [heartlandhoneyks@gmail.com](mailto:heartlandhoneyks@gmail.com) July 3, August 7, September 4, October 2 5-7pm

## Tips for June

- Enjoy the smell of the beeyard, weather they're filling up your box or theirs you should have a sweet smelling beeyard right now.
- Drink some water!! It's going to get warm out there.
- Try and work in the mornings when it's cool.
- This is usually our big month! I hope that your hives are doing well.
- Later this summer, we can have a mite explosion due to drifting from the honey flow and the bee population will be at their peak, but mite population will not.
- Test for mites and start reviewing treatment options that work with the heat and your situation, plan ahead as a treatment should happen in the next few months.



## Military/Veterans Apprenticeship Program

Are you a veteran or on active duty and thought about getting into beekeeping? The Northeastern Kansas Beekeepers Association (NEKBA) offers an apprenticeship for veterans and active-duty service members that covers the cost of education, bees, and equipment. The association also provides a mentor to help you with your journey.

Application must be submitted by 31 October. Spots are limited, and more information can be found at <http://www.nekba.org/scholarship.html>

If you have any questions, please let me know. Buck Bradley 785-248-1005 [Babradley82@gmail.com](mailto:Babradley82@gmail.com)

**Buck Bradley, Military/Veteran Appr. Liaison**

## Honey Plants

June is a wonderful time of the year. So many floral sources are available for our bees. This is the peak of our major nectar flow. Recently, all of NE KS has been fortunate to have had some measurable rainfall. Blooms need moisture to produce nectar however rain while a plant is in bloom can result in nectar being washed out of the bloom. How the bloom grows plays a big part in retaining the nectar during rain. Blooms facing down,

such as the Little Leaf Linden tree, are less likely to be affected by rainfall during bloom time.

Where nectar has been washed out, a young bloom might continue to produce additional nectar in a day or two. The results are poor foraging for honey bees during that time. A tree or shrub that is near the end of its bloom period may just fade and not produce more nectar.

Our biggest sources of nectar, in NE KS, are the clovers. As I write this White Dutch and Yellow Sweet clover are blooming. White Sweet clover will follow on the heels of the Yellow.

Honey bees work clover for nectar and pollen. Where possible, I would encourage you to add 1 to 2 ounces of White Dutch clover seed per 1000 Sq. Ft. of lawn. Not only will this provide honey

bee and pollinator forage, but clover is also a chemical-free source of nitrogen for your soil; resists drought; attracts earthworms and beneficial soil microorganisms. You can also plant clover, exclusively, in a ring around your vegetable garden to attract those earthworms and deter rabbits. On a larger scale, using White Dutch clover in lawns will help stop fertilizer run-off and lower the risk of algae bloom in stock ponds, creeks, and waterbodies. It is not advised to use White Dutch clover in high foot traffic areas.

For ease of writing, I will use the abbreviations (N) for nectar and (P) for pollen to indicate the honey bee's preference when foraging that plant. Blooming around the first week of June are Little Leaf Lindens (N&P), Catalpa trees (N), and Mimosa trees (N&P). A native relative of Little Leaf Linden is the Basswood tree. The Basswood blooms shortly after the Little Leaf Linden. Also native is the Persimmon tree (N) that blooms at the same time. We are on the western edge of the Persimmon's natural habitat, but I understand there are



some in the Lawrence area. Shortly after the Linden bloom is the Golden Rain Tree (N&P). The Golden Rain Tree displays pendulums of yellow blooms. Those blooms produce seed pods that resemble Chinese Lanterns. Just a few other June blooming honey plants include Motherwort (N&P), Oak Leaf Hydrangea (N&P), Shiny Sumac (N&P), Inkberry shrubs (N&P), Culver's Root (N&P), and Slender Mountain Mint (N).

Chicory (N&P) has long been recognized as a honey plant. This yellow honey can develop greenish tinges when it granulates. It is long-blooming and produces white pollen. It will produce nectar under dry conditions, but production is best when the weather is moist. Chicory originates from Europe and has adapted itself to grow in disturbed areas, roadsides, meadows, and harsh gravelly locations.

Motherwort (N&P) is a medicinal herb originating from Europe. Blooms can last as long as two months. This herb does well in dry conditions and reseeds itself easily. Honey bees will eagerly work the blooms.

I have recently discovered Beescape, a tool to help beekeepers determine the quality of forage surrounding their colonies. <https://pollinators.psu.edu/bee-health/beescape> This program was developed by Penn State University to help beekeepers, gardeners, urban planners, growers, researchers, and land managers assess the quality of their landscapes for supporting bees and other pollinators. The link is an introductory page that will guide the user through the program. After entering your apiary location address, or potential location, this easy-to-use program allows you to view a map and a radius up to 5 miles. That area is then broken down into percentages showing agricultural use and specific crops, water, forest, and more. It can be enlightening to see exactly how much area is covered by your honey bees as they forage.

**Jo Patrick, Honey Plants Chairman**

**Bee FunDay 2025 update-** We had nearly 200 attendees. After looking through the evaluations, they have never been more positive! We had a variety of presentations, all well attended. The food got rave reviews. In the past, we had complaints about no gluten-free or no vegetarian choices, and we addressed that. We moved the rooms around to address the noise issue, - no complaints this year.

Please think about if you would like to serve as the next Funday chair. This is a NEKBA board position. The great thing is that we have a great committee that gladly takes on various jobs!

Many thanks to those that donated items to the silent auction. The auction is our main fundraiser for our youth scholarship program and military/veteran/first responder program. We raised over \$1,940 dollars!

**Joli Winer, 2025 Bee FunDay Coordinator**

### **Honey Ice Cream with Fruit - For the fruit batches (Bee FunDay Honey Ice Cream Recipe)**

- For a 6-quart freezer: 6 cups whipping or heavy cream.
- 6 cups whole milk
- 2 ¼ cups honey
- 1-quart masticated fruit
- 3 T Vanilla

Crush/masticate fruit and add a little sugar to make the fruit juicier. Warm the milk with the honey so the honey will stay mixed in the ice cream as it gets made. Let the honey/milk mixture cool. Combine the milk mixture, vanilla, fruit, and either whipping cream or heavy cream in your ice cream container. Then, follow the instructions for your ice cream maker to process the mixture.

More recipes including Chocolate and Vanilla can be found on the website:

<https://www.nekba.org/ice-cream-recipes.html>



## NORTHEASTERN KS BEEKEEPERS' ASSOC. 2025 MEMBERSHIP APPLICATION

NAME \_\_\_\_\_  
ADDRESS \_\_\_\_\_  
CITY \_\_\_\_\_ STATE \_\_\_\_\_ ZIP+4 \_\_\_\_\_  
PHONE \_\_\_\_\_ Email Address \_\_\_\_\_

Membership Northeastern KS Beekeepers per year (July-Dec. \$12.50)	\$25.00	_____
Additional family members wanting voting rights \$1.00 per person	\$1.00	_____
Additional family member's name _____		
(Youth Membership (18 years of age or under)	\$12.50	_____
Membership for Kansas Honey Producers Association	\$25.00	_____
American Bee Journal ( <u>discounted rate through association</u> )	1 year \$29.75	_____
Bee Culture Magazine (or subscribe online at <a href="http://www.BeeCulture.com">www.BeeCulture.com</a> )	1 year \$34.00	_____
Scholarship / Military/Veteran's Appr. Donation		_____
	<b>Total</b>	_____

**Make checks payable to: NEKBA or Northeastern Kansas Beekeepers Assn.**

Mail to: Robert Burns, 7601 W 54<sup>th</sup> Terr., Shawnee Mission, KS 66202 ph. 913-481-3504, [rburnshoney@gmail.com](mailto:rburnshoney@gmail.com)

**You may join, re-new, register, donate and pay online at [www.nekba.org](http://www.nekba.org)**

---

## MARKET PLACE

### MENTORING-SWEET PRAIRIE HONEY

Need help with your hives? -Spring inspections, installing packages, making splits, queen evaluation, diagnosis of pests and diseases, mite monitoring and treatment, etc. I can help you with your beekeeping needs! I am a certified master beekeeper with 30+ years of beekeeping experience. I will leave you with a written course of action after our session at your hives. Call or text 913-768-4961 or email Kristi Sanderson at [sandersonk09@gmail.com](mailto:sandersonk09@gmail.com) for pricing and appointment times.

---

### BEEKEEPERS.COM

[Beekeepers.com](http://Beekeepers.com) (Jordy's Honey Company) in Lenexa, KS. Beekeepers.com is your only local full-service beekeeping store. We carry a full line of Beekeeping Supplies, Protective Clothing, Bottles, Bee Packages, Nucs and Queens. Visit our website Beekeepers.com, to view our entire line of beekeeping supplies. You can also shop in-person at our store in Lenexa. We ship queens directly to YOU! Order at QueenBees.com. Queens available March - October. Our hours are Monday-Friday 9:00-4:00, Saturday 9:00-12:00. You can find our honey at The Overland Park Farmers Market. **Robert Hughes**, 14054 W 107<sup>th</sup> St, Lenexa, KS 66215, 913-681-5777 or [email Info@Beekeepers.com](mailto:email Info@Beekeepers.com)

---

### COTTIN'S HARDWARE & RENTAL

Cottin's stocks a full line of beekeeping equipment year-round including items manufactured by Harvest Lane Honey, Little Giant, and Bug Baffler. Products include hives, supers, frames, foundations, extractors, tools, and protective apparel. We also stock a full line of Home Brewing Mead Making supplies. Located in Lawrence, KS at 1832 Massachusetts Street (South of Dillon's). We are open Monday - Friday 7:30 am - 6:00 pm, Saturday 8:00 am - 5:00 pm, and Sunday 10:00 am - 5:00 pm. You can follow us on Facebook, Instagram and Twitter. Call us at 785-843-2981 or email us at [hardware@sunflower.com](mailto:hardware@sunflower.com).

---

## CB'S HONEY

CB's Honey offers pure raw Kansas honey available in 5 gal buckets. Grafted queens and queen cells, and a limited number of nucs/packages. [CB's Honey | Facebook](#). Located just SE of Topeka. 4521 SE 61<sup>st</sup> Street, Berryton, KS 66409. Call or text Cheryl Burkhead at 785-224-9077 or [cherylbhoney@gmail.com](mailto:cherylbhoney@gmail.com)

---

## CEDAR RIDGE BEES

5 Frame Nucs for Sale. We are your local Premier Bee Products Dealer specializing in plastic foundation made entirely in the U.S.A. We sell bucket feeders and other bee equipment. Call or text Philip Knaus at 785-581-4216 or contact us at [cedarridgebeehives@gmail.com](mailto:cedarridgebeehives@gmail.com) - Check out our bees and products at [www.cedarridgebees.com](http://www.cedarridgebees.com) Cedar Ridge Bees 585 N 500 Rd, Overbrook, KS 66524.

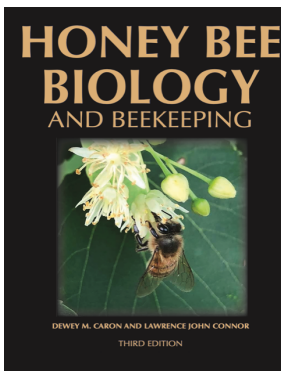
---

## T CREEK BEES AND HONEY – Tecumseh/Berryton, KS

Tecumseh Creek winds its way through the home yard lending its name to the brand. Located between Lawrence and Topeka, T Creek offers 5-frame nucs, online honey sales, custom honey packing, wholesale delivery to the Topeka / Lawrence area, 5-gallon buckets of honey, and drop-shipping wholesale service to rural grocery stores and agritourism destinations. Visit [www.tcreekbees.com](http://www.tcreekbees.com) Email: [tcreekbees@gmail.com](mailto:tcreekbees@gmail.com) or find the bees on Facebook. Order 2025 5-frame nucs by visiting the website and completing the nuc order form. Owner: Tim Urich. LLC in the State of Kansas and licensed by Kansas Dept of Ag.

---

## Honey Bee Biology and Beekeeping, Third Edition, Dewey M. Caron and Lawrence John Connor,



**\$90 postage included.** *This book should stay on the dashboard of every beekeeper's truck. It's that good, and that necessary.* Kim Flottum, *Bee Culture*. This comprehensive textbook easily replaces many beginner books while adding comprehensive details of bee biology essential to becoming a successful beekeeper and student of the honey bee. First released in 1999, *Honey Bee Biology and Beekeeping* is widely accepted as a major textbook of Apiculture (beekeeping). Beekeepers and bee clubs use it to teach other beekeepers. Universities use it to teach college students bee biology and beekeeping. It concentrates on the 'why', 'how' and 'when' of beekeeping. It explains bee and beekeeping basics in a manner meaningful to people who lack an extensive background in biology. Yet it is not over-simplified and provides a meaningful source of beekeeping information for the informed beekeeper. The Third Edition has been carefully edited, updated and expanded to 480 pages. New chapters have been added, as have colorful new graphics and photographs. The Glossary has also been expanded.

Wicwas Press LLC Kalamazoo, MI 49001 - [www.wicwas.com](http://www.wicwas.com)

---

## Register for the Monarch Watch 2025 International Monarch Science Symposium!

August 5-7, 2025, in Lawrence, KS. Registration is now open.

**Early registration is available until June 30, 2025.**

**The last day for regular registration is July 14, 2025.**

Complete symposium details at: [monarchwatch.org/events/symposium2025](http://monarchwatch.org/events/symposium2025)



---

The Association does not endorse nor evaluate the advertisements, products, or services offered in the Buzzer.

Northeastern Kansas Beekeepers Association  
Robert Burns, Treasurer  
7601 W 54<sup>th</sup> Terr  
Shawnee Mission, KS 66202-1129

## Address Service Requested

### Meeting

**Monday, June 16<sup>th</sup>, 2025 – Douglas County Fairgrounds**

### ***The Northeastern Kansas Beekeepers' Association***

Membership is open to anyone interested in bees or bee culture. Dues are \$25.00 per calendar year (December 31-December 31) for the first in the family joining. Those joining in July or later in the year may pay \$12.50 for ½ year. Additional members of a family wanting voting privileges shall be assessed dues at \$1.00 per year. Youth memberships (18 years of age and younger) are \$12.50 per year. Please submit new memberships and renewals to the treasurer or on-line at [www.nekba.org](http://www.nekba.org).

*The Bee Buzzer* is the official publication of the Northeastern Kansas Beekeepers' Association, Inc. and is published monthly. Commercial ads are accepted in the newsletter for a fee; non-commercial ads by paid members are accepted & are free.

The library of the association is free to all members. Books may be checked out at the meetings and kept for a period of 30 days. The bee publications, *The American Bee Journal* and *Bee Culture* can be subscribed to through the treasurer or on-line. The *American Bee Journal* is offered at a discount through the Association only.

The Association meets each month, generally on the third Monday at 7:00 p.m. except during the months of January and July. This is a non-profit organization; elected officers serve without pay. Everyone is invited to attend the meetings. Check *The Bee Buzzer* or website at [www.nekba.org](http://www.nekba.org) each month for the actual date, time, and location. If the weather is bad, call an officer or check the website to find out if the meeting will be held or cancelled.

#### **2025 Officers**

President: <b>Cheryl Burkhead</b> , 4521 SE 61st St., Berryton, KS 66409 <a href="mailto:cbfritz@aol.com">cbfritz@aol.com</a>	785-224-9077
1st VP (Program Chair): <b>Matt Brandes</b> , 4741 Highway K 68, Wellsville, KS 66092 <a href="mailto:matthew@n523rv.com">matthew@n523rv.com</a>	913-706-3087
2nd VP (Librarian): <b>Michael Hewitt</b> , 9221 SE Berryton Rd, Berryton, KS 66409 <a href="mailto:garlicranch69@gmail.com">garlicranch69@gmail.com</a>	785-230-0827
3rd VP (Honey Plants): <b>Jo Patrick</b> , 611 E Sheridan St., Olathe, KS 66061 <a href="mailto:brian-patrick@sbcglobal.net">brian-patrick@sbcglobal.net</a>	913-645-8947
Secretary: <b>Elaine Ellenz</b> , 17650 W 113 <sup>th</sup> St., Olathe, KS 66061 <a href="mailto:elaineellenz@gmail.com">elaineellenz@gmail.com</a>	913-515-1607
Treasurer: <b>Robert Burns</b> , 7601 W 54 <sup>th</sup> Terr., Shawnee Mission, KS 66202 <a href="mailto:rburnshoney@gmail.com">rburnshoney@gmail.com</a>	913-481-3504
Youth Scholarship Chair: <b>Jon Chitwood</b> , 27196 W 223 <sup>rd</sup> St, Spring Hill, KS 66083 <a href="mailto:jwchitwood@gmail.com">jwchitwood@gmail.com</a>	913-738-4585
Military/Veteran Appr. Liaison: <b>Buck Bradley</b> , 11 E 900 Rd., Baldwin City, KS 66006 <a href="mailto:buckusmc00@hotmail.com">buckusmc00@hotmail.com</a>	785-248-1005
Editor: <b>Tim Marshall</b> , 4736 Halsey St., Shawnee, KS 66216 <a href="mailto:flyinmonk@yahoo.com">flyinmonk@yahoo.com</a>	816-392-6854
Special Events Coordinators:	
(Classes): <b>Kristi Sanderson</b> , 1252 E Frontier Ln., Olathe, KS 66062 <a href="mailto:sandersonk09@gmail.com">sandersonk09@gmail.com</a>	913-768-4961
(Funday): <b>Joli Winer</b> , 19201 S Clare Rd, Spring Hill, KS 66083 <a href="mailto:heartlandhoneyks@gmail.com">heartlandhoneyks@gmail.com</a>	913-593-3562
Webmaster: <b>Robert Burns</b> , 7601 W 54 <sup>th</sup> Terr., Shawnee Mission, KS 66202 <a href="mailto:rburnshoney@gmail.com">rburnshoney@gmail.com</a>	913-481-3504

**Visit on-line at [www.nekba.org](http://www.nekba.org). Save time. Join, re-new, or register.**