

**Rabbit Anti-Transcription Factor PU.1/PU.1/Spi1 [EP18]: RM0190, RM0190RTU7**

**Intended Use:** For Research Use Only

**Description:** PU.1 is a member of the Ets family of transcription factors and is required for the development of multiple hematopoietic lineages. It plays a pivotal role in normal myeloid differentiation, and regulates the expression of immunoglobulin and other genes that are important for B-cell development. PU.1 stains B lymphocytes in germinal center and mantle B cells, but not plasma cells. It labels many types of B-cell lymphomas including mantle cell lymphoma, but is not expressed in classical Hodgkin lymphoma (cHL). The lack of transcription factor PU.1 protein expression in cHL, a lymphoproliferative disease of predominantly B-cell origin, likely contributes to the lack of immunoglobulin expression and incomplete B-cell phenotype characteristic of the Reed-Sternberg cells in cHL.

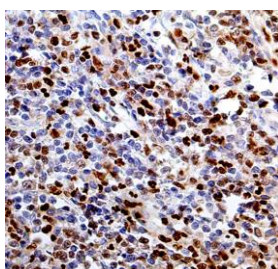
**Specifications**

Clone: EP18  
 Source: Rabbit  
 Isotype: IgG  
 Reactivity: Human  
 Localization: Nucleus  
 Formulation: Antibody in PBS pH7.4, containing BSA and <= 0.09% sodium azide (NaN3)  
 Storage: Store at 2°- 8°C  
 Applications: IHC  
 Package:

| Description                                      | Catalog No. | Size |
|--|-------------|------|
| Transcription Factor PU.1/PU.1/Spi1 Concentrated | RM0190      | 1 ml |
| Transcription Factor PU.1/PU.1/Spi1 Prediluted   | RM0190RTU7  | 7 ml |

**IHC Procedure**

Positive Control Tissue: Tonsil, lymphoma  
 Concentrated Dilution: 50-200  
 Pretreatment: Citrate pH6.0 or EDTA pH8.0, 15 minutes using Pressure Cooker, or 30-60 minutes using water bath at 95°-99°C  
 Incubation Time and Temp: 30-60 minutes @ RT  
 Detection: Refer to the detection system manual  
 \* Result should be confirmed by an established diagnostic procedure.



FFPE human tonsil stained with anti-PU.1 using DAB

**References:**

1. STAT3/5-Dependent IL9 Overexpression Contributes to Neoplastic Cell Survival in Mycosis Fungoides. Vieyra-Garcia PA, et al. Clin Cancer Res 22:3328-39, 2016.
2. Cooperative Activity of GABP with PU.1 or C/EBPε Regulates Lamin B Receptor Gene Expression, Implicating Their Roles in Granulocyte Nuclear Maturation. Malu K, et al. J Immunol. Aug 1;197(3):910-22, 2016.

Doc. 100-RM0190  
Rev. A