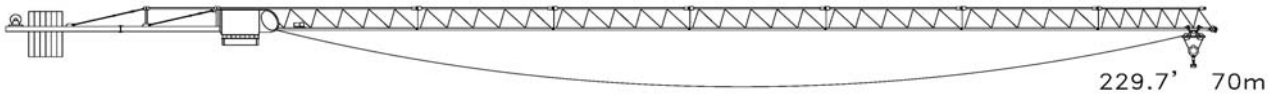
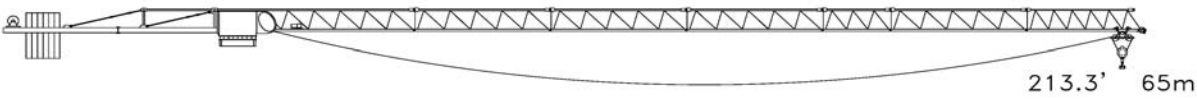


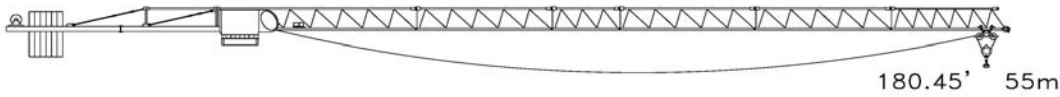
RADIUS & CAPACITY (m)		MAX LOAD	DIST	30	35	40	45	50	55	60	65	70	75
(2 part line, m/ton)		6	31	6	6	5.76	5.03	4.44	3.96	3.57	3.23	2.95	2.7
(4 part line, m/ton)		12	16.3	7.74	6.45	5.49	4.75	4.16	3.67	3.27	2.94	2.65	2.4
RADIUS & CAPACITY (ft)		MAX LOAD	DIST	30	35	40	45	50	55	60	65	70	75
(2 part line, lbs)		13,228	101.71	13,228	13,228	12,699	11,089	9,789	8,730	7,871	7,121	6,504	5,952
(4 part line, lbs)		26,455	53.48	17,064	14,220	12,103	10,472	9,171	8,091	7,209	6,482	5,842	5,291



RADIUS & CAPACITY (m)		MAX LOAD	DIST	30	35	40	45	50	55	60	65	70
(2 part line, m/ton)		6	37.5	6	6	6	5.71	5.06	4.53	4.09	3.72	3.4
(4 part line, m/ton)		12	19.9	8.67	7.26	6.21	5.4	4.75	4.22	3.78	3.42	3.1
RADIUS & CAPACITY (ft)		MAX LOAD	DIST	30	35	40	45	50	55	60	65	70
(2 part line, lbs)		13,228	123.03	13,228	13,228	13,228	12,588	11,155	9,987	9,017	8,201	7,496
(4 part line, lbs)		26,455	65.29	19,114	16,006	13,691	11,905	10,472	9,304	8,333	7,540	6,834



RADIUS & CAPACITY (m)		MAX LOAD	DIST	30	35	40	45	50	55	60	65
(2 part line, m/ton)		6	42.1	6	6	6	6	5.67	5.09	4.61	4.2
(4 part line, m/ton)		12	22	9.54	8.27	7.1	6.2	5.48	4.9	4.41	4
RADIUS & CAPACITY (ft)		MAX LOAD	DIST	30	35	40	45	50	55	60	65
(2 part line, lbs)		13,228	138.12	13,228	13,228	13,228	13,228	12,500	11,222	10,163	9,259
(4 part line, lbs)		26,455	72.18	21,032	18,232	15,653	13,669	12,081	10,803	9,722	8,818



RADIUS & CAPACITY (m)		MAX LOAD	DIST	30	35	40	45	50	55
(2 part line, m/ton)		6	43.7	6	6	6	6	6	6
(4 part line, m/ton)		12	23.1	11.42	9.64	8.31	7.28	6.47	5.8
RADIUS & CAPACITY (ft)		MAX LOAD	DIST	30	35	40	45	50	55
(2 part line, lbs)		13,228	143.37	13,228	13,228	13,228	13,228	13,228	13,228
(4 part line, lbs)		26,455	75.79	25,177	21,253	18,320	16,050	14,264	12,787



RADIUS & CAPACITY (m)		MAX LOAD	DIST	30	35	40	45
(2 part line, m/ton)		6	47.5	6	6	6	6
(4 part line, m/ton)		12	24.8	12	10.31	8.5	7.8
RADIUS & CAPACITY (ft)		MAX LOAD	DIST	30	35	40	45
(2 part line, lbs)		13,228	155.84	13,228	13,228	13,228	13,228
(4 part line, lbs)		26,455	81.36	26,455	22,730	18,739	17,196