



THE GEODE

Lakeside Gem and Mineral Club, Inc. (LGMC)

Web Site: www.lakesidegemandmineralclub.com

E-mail: lakesidegemandmineral@yahoo.com

Facebook: Lakeside Gem & Mineral Club

Instagram: [lakesidegemandmineral](https://www.instagram.com/lakesidegemandmineral)

Volume 155 Issue 12

December 2021

Club purpose: Promote activities of mutual interest for collecting and displaying of gems and minerals.

Address: Lakeside Gem & Mineral Club, Inc., PO Box 6652, Kennewick, WA 99336-0603

IN THIS ISSUE:

- 1) Club Meeting Schedule
- 2) Minutes – Club Meeting
- 2) Lifetime Members
- 3) Minutes – Board Meeting
- 4) Project of Year Winners
- 7) Junior Rock Club Minutes
- 8) Rockin' Out the Year Info
- 9) Selling Items at Club Shows Etc
- 9) Classified
- 10) Membership Application
- 11) Board of Directors/Contact #s
- 12) Critical Mask Reminder

GEODE Submission Deadlines:

- 19th – member articles & photos
- E-mail: lakesidegemandmineral@yahoo.com
- **Membership:** Please pay at meetings or mail in.

GEODE Reprint Permission: Permission to reprint is granted, provided appropriate credit is given to the source.

Update your email address on your Membership Application so that you don't miss out on Club Communications.

Club Meetings

Seventh Day Adventist Church, 7105 W 10th Ave, Kennewick
General Meeting starts at 7:00pm. No refreshments will be available.

December 1, 2021

Rockin' Out the Year

More information on page 6 of The Geode.

January 5, 2022

Rock Bingo!

February 2, 2022

Designing a Competition Display Case.

Minutes – Club Meeting – November 3, 2021

Chris Sorensen called the meeting to order at 7:00 p.m.

- The minutes of the previous meeting stand as printed.
- Welcome Guests

Old Business

- The show next year will be our 25th anniversary, and we will be hosting the Northwest Federation mid-year meeting, as well as judges training. Larry asked everyone to please consider putting in a competitive case to help out with the judges training course. There are many display categories to consider, and as many cases as possible would be great.
- Sally is updating the inventory list for club owned supplies and equipment. If you are storing any items for LSGM, please see Sally for that update to the inventory.

Lifetime Membership

- Judi Allison, Marty Casto, Bert Kae-Je, Ron Northey and Myrene Northey were given Lifetime Memberships. Also awarded, but not present, were Mickee Madden, Steve Madden and John Jennings.

New Business

- Our Christmas party will be held at the church on what would be our regular meeting night of December 1 at 7:00 p.m. See the Geode for more information.

November Program – Club Contest Night

The meeting adjourned at 8:30 p.m.

Respectfully Submitted
Sally Lyon, Secretary



Lifetime Members:

Bert Kae-Je
Ron Northey
Myrene Northey
Judi Allison
Marty Casto

Not pictured:
Mickee Madden
Steve Madden
John Jennings

Minutes – Board Meeting – November 15, 2021

Present: (Board Members) Chris Sorensen, Peter Kovich, Larry Hulstrom, Patrick Donohue, Jane Moore, Caroline Bowdish, Patty DeForest, Sally Lyon; (Members) Marty Casto

Chris Sorensen called the meeting to order at 6:30 p.m.

Old Business

- The equipment and supplies inventory list has been updated.
- Supplies for Bingo Night have been put together.
- Pictures from our Club Competition will be published in the Geode, as well as new lifetime members.
- A reminder that Club dues are being collected.

2022 Show:

- Larry has confirmed that we will be using building 2 at the Fairgrounds for vendors, display cases, the silent auction, demonstrations, Juniors, etc. Building 3 will be available for the potluck dinner after set up, judges training, the mid-year Northwest Federation meeting, as well as a hospitality/break area.
- He is working on the floor layout.
- Larry and Judi are continuing to contact vendors and confirming contracts.
- New fliers have been drafted to include the date and to note that there is no ATM available – cash or checks only. He will also check with the printer to determine a price for a limited number of full sheet color fliers.

New Business

- Jane Moore and Judi Allison are working on Christmas party planning. The motion was made and passed to allow a \$250.00 budget for decorations. There will be games and a white elephant gift exchange. Members will be asked to bring a non-perishable food donation for the Tri-Cities Food Bank. See the Geode for more information.
- There is no Board meeting in December.
- Chris will check with Bill Hamel about the specifics of renewing our non-profit status with the state.
- It was confirmed that a review of our bylaws will begin in November of 2022.
- Caroline confirmed that all bills have been paid, and she is working closely with Kathy Larson to maintain the membership list.

The December meeting program will be our Christmas Party.

The meeting adjourned at 7:25 p.m.

Respectfully Submitted
Sally Lyon, Secretary

.....

Lakeside Gem & Mineral Club
2021 Project of the Year Competition Winners

Category 1 – Best Color
Mark Spinner

Category 2 – Most Unique Rock
Duane Schock

Category 3 – Best Fossil
Joshua Hulstrom

Category 4 – Jewelry
Ron Northey
Chris Sorensen

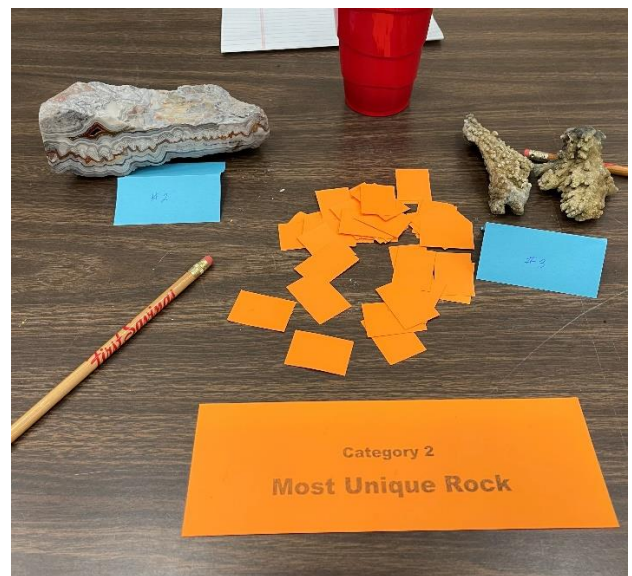
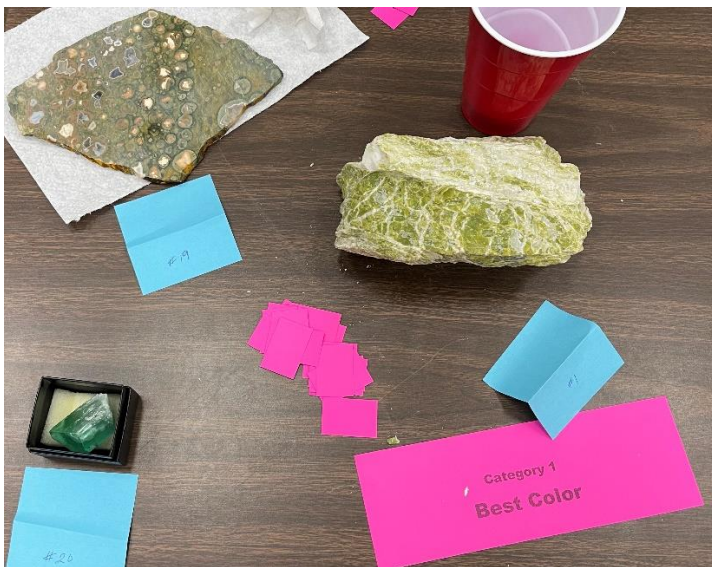
Category 5 – Faceter of the Year
Krista Weber

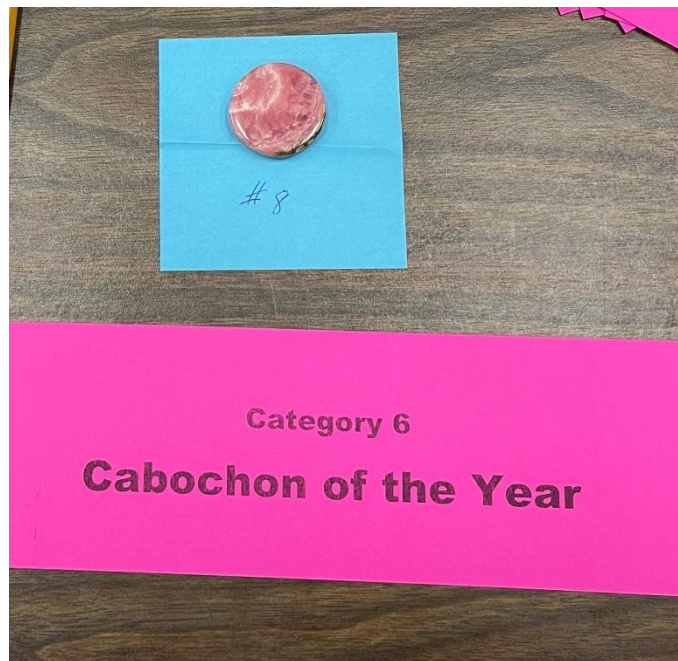
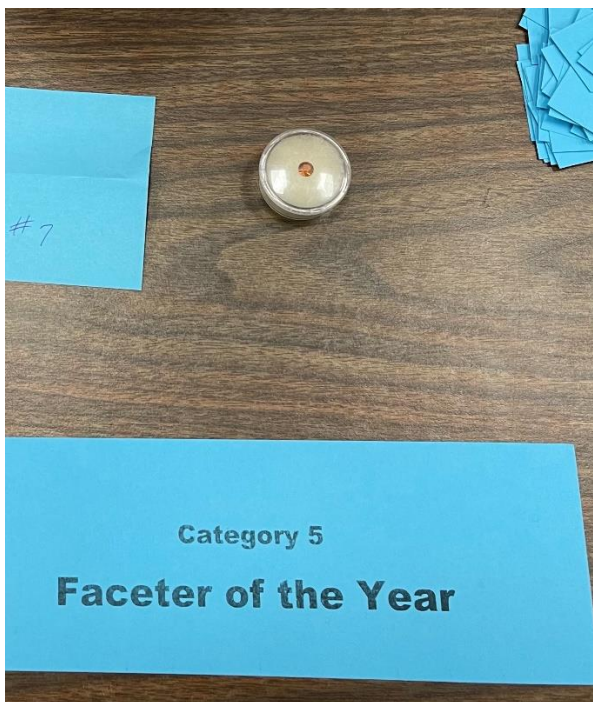
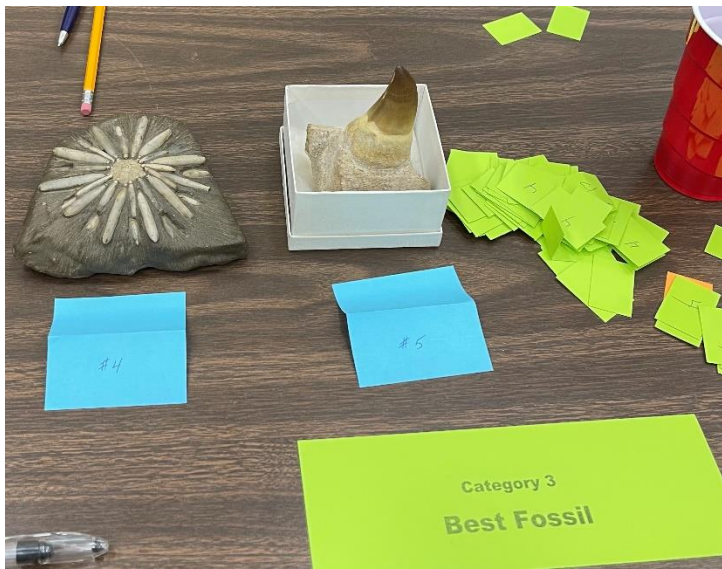
Category 6 –Cabochon of the Year
Wayne Larson

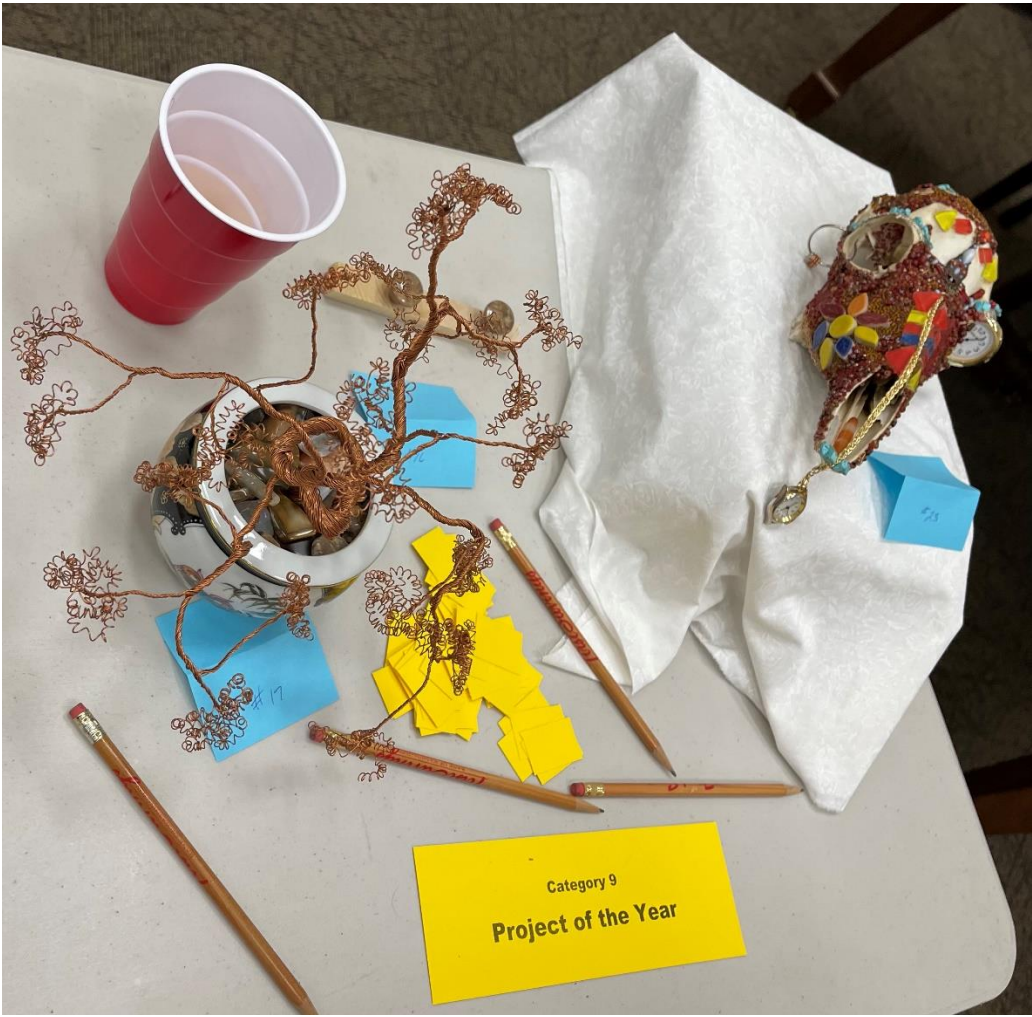
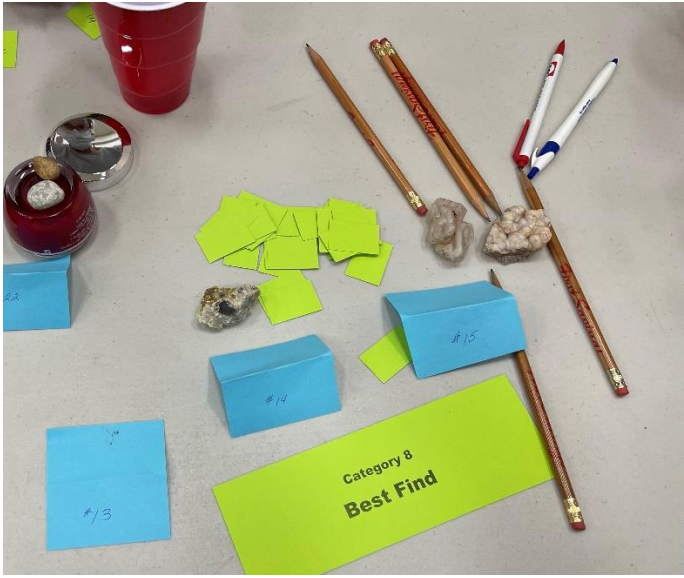
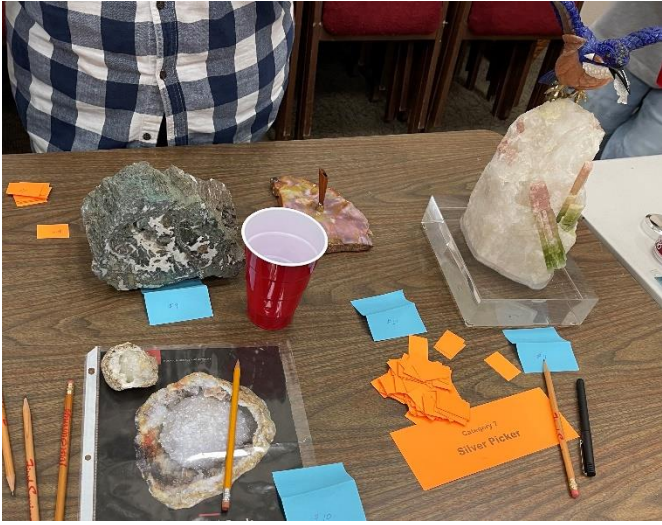
Category 7 – Silverpicker of the Year
Pat Snyder

Category 8 – Best Find
Patrick Donohue

Category 9 – Project of the Year
Judi Allison







Junior Rock Club Minutes

October, 2021

Five students enjoyed a fun, upbeat Scavenger Hunt learning about objects in our home environments made from minerals. Students ran to grab toothpaste, hand lotion, and table salt as they learned of sometimes hidden minerals of fluorite, aluminum and halite within the products. They learned of lead in batteries, tv tubes and computers. Mica is in sheetrock, paints, cosmetics and soap. Nickel is in magnets, coins, and stainless steel. Phosphate is in fertilizer and detergents, while silica is in glass, antacids, and paint. The lists went on and the students scrambled to find items in their homes to show one another on their computer screens made of silica. The list came from [SmithsonianEducation.org/educators/lesson_plans/minerals](https://www.smithsonianeducation.org/educators/lesson_plans/minerals)

Students were encouraged to check out other websites with their parents, for interesting games and informative features regarding minerals:

The Oxford University Museum of Natural History at: [oum.ox.ac.uk/thezone](https://www.oum.ox.ac.uk/thezone).

The Learning Zone, Funstuff and other searches may lead to interesting fun too.

November, 2021

Junior Rock Club met on Zoom November 9th with something a little different...we looked at the other rocky planets of our solar system! Pauline Schafer used images from many NASA missions to Mercury, Venus, Mars, and even dwarf planet Ceres to give an overview of some of the surface features that we can explain (like volcanoes and impact craters) and some that we cannot yet explain. Using an online star map called Stellarium, the group also enjoyed a tour of the night sky to identify visible planets and constellations, and even a few satellites. And a video by NASA gave a preview of what we can expect to learn from the new James Webb Space Telescope launching December 18th.

Pauline Schafer
Education Manager at The REACH Museum
1943 Columbia Park Trail, Richland WA 99352
(509)943-4100 Ext. 113
www.visitthereach.org

Sign up for our education newsletter at <https://www.visitthereach.org/education-resources-teachers/>



LAKESIDE GEM & MINERAL CLUB

Cordially Invites You To

ROCKIN' OUT THE YEAR

December 1

6:30 p.m. Setup

7:00 White Elephant Gift Exchange

Seventh Day Adventist Church
7105 W 10th Ave
Kennewick, WA

Bring something rock related, \$10 and under, for the gift exchange and individually packaged snacks to share.

Water will be provided.

There will be games, door prizes and an evening of Rockin fun.

We will also be taking donations of non-perishable food items for the Tri-Cities Food Bank.

Masks are required in the Church.



Selling Items at Club Shows, Auctions and Other Club Related Activities

Items that could be sold at club shows, auctions and other club related activities:

- Rocks, Minerals, Fossils (specimens, rough).
- Lapidary and carving rough and associated equipment and supplies.
- Rockhounding equipment and supplies.
- Faceting rough and associated equipment and supplies.
- Gold Panning/Metal Detecting equipment and supplies.
- Flint Knapping equipment and supplies.
- Jewelry equipment and supplies.
- Magazines, books, DVDs, CDs, associated with any of the above items/topics.

In short, the items you sell **must be directly related to minerals, rocks, and fossils or jewelry.** Please remember what we sell reflects upon our club and tells the public what we are about!

Classifieds

Rock Saw Oil and Grit: Please have exact change and contact for pickup:
Rick Tobin, 2767 South Lyle St., Kennewick, 509 572-7345

Saw oil purchasing information:

- Must be a LSGM club member to purchase saw oil.
 - Membership forms are available if you need to join.
- Oil \$12 per gallon.
Available in 5-gallon buckets, or bring your own containers

Tumbling grit all sold in 2# bags only:

- 80 grit: \$5.00 for 2# bag
- 220 grit: \$5.50 for 2# bag
- 600 grit: \$7.00 for 2# bag.
- Cerium Oxide Polish Powder: \$23.00 for 2# bag.
- For every 10 lbs. of tumbled rock you donate (no river rock), get 2 lbs. of 60/90 or 220 grit free.

Membership Application
Lakeside Gem and Mineral Club
January 1, 2022 – December 31, 2022

Dues are prorated according to the month you join. Date _____

___ Family - \$25.00 Join date (Jan-Mar) \$20 (Apr-Jun) \$15 (Jul-Sept) (List all of the Members of the immediate family to be covered by the family membership)

___ Individual - \$20.00 Join date (Jan-Mar) \$15 (Apr-Jun) \$10 (Jul-Sept)

___ Junior - Member only (is not a part of a family membership) - \$5.00 join date (Jan-Mar) \$4.00 (Apr-Jun) \$3.00 (Jul-Sept)

Please mail to: Lakeside Gem and Mineral Club Attn: Membership
PO Box 6652, Kennewick WA 99336-0603

Name(s) _____

Address: _____

City: _____ State: _____ Zip: _____ Phone: _____

Email: _____ Email: _____

Junior Member(s) _____ Age _____ Birth Month _____
(6 - 16)

_____ Age _____ Birth Month _____

_____ Age _____ Birth Month _____

_____ Age _____ Birth Month _____

I would like to receive the Geode newsletter by: _____ mail _____ email

May we list your contact information on our local membership list?
(available to Lakeside members only) ___yes _____no

May we list your contact information in the NW Federation Directory?
(available to Federation members) ___yes _____no

Suggestions for meeting programs:

I would like to see a program(s) on _____

I would like to help with

Field trips _____ Membership _____ Newsletter Articles _____ Programs _____

Publicity _____ Junior programs _____ Mailings _____ Other _____

Please make check payable to Lakeside Gem and Mineral Club

Officers E-mail: lakesidegemandmineral@yahoo.com

President	Chris Sorensen	Director	Patrick Donohue
Vice President	Peter Kovich	Director	Jane Moore
Secretary	Sally Lyon	Fed. Rep.	Larry Hulstrom
Treasurer	Caroline Bowdish	Jr Club Leader	Thora Trumbo
Past President	Bill Hamel	Bulletin Editor	Patty DeForest

Phone numbers are all Area Code 509. By-Laws specify two year elected terms of office for Board Members, beginning in November. President, Vice President and one Director begin in even numbered years. Secretary, Treasurer and one Director (*) begin in odd numbered years. Federation Representative, Junior Club Leader, Bulletin Editor and Committee Chairs are Board-approved volunteers. By-Laws at www.lakesidegemandmineralclub.com

Other Contact Info:

Program Director: Duke Rauh
 Librarian: Walther Rohlfing
 Membership Coordinator: Kathy Larson
 Refreshments: Rhea Bowerly
 Historian: Mickee Madden
 Sunshine Chairman: Sally Lyon

Rockhound Legislative Advocate

When notified by the AFMS, the NFMS, ALAA or club members about legislative issues that will affect rockhounding activities, forward that information to club members via email lists.



Club Affiliations:

American Federation of Mineralogical Societies (AFMS)
 Northwest Federation of Mineralogical Societies (NFMS)
 American Lands Access Association (ALAA)

<http://www.amfed.org>
<http://www.amfed.org/nfms>
<http://www.amlands.org>



Member: Tri-Cities Visitor and Convention Bureau

THE GEODE

Volume 155 Issue 12

December 2021



LAKESIDE GEM & MINERAL CLUB, INC.

PO Box 6652

Kennewick, WA 99336-0603

CRITICAL REMINDER: The state has mandated that masks be worn during indoor gatherings. The church also requires that masks be worn at all times while inside. Please, if you cannot wear a mask or don't feel that you need to wear one, we respectfully ask that you not attend meetings in person. We have maintained our subscription to Zoom Meetings so that those who cannot meet in the church can still participate in our club activities. If you forget your mask, one will be provided to you at the door. By choosing to not wear a mask, we are risking our club losing use of the church facility. We are also putting our fellow members at risk, and in a position of having to enforce the mask requirement, which we're all too old tired of the craziness to have to deal with.