

Weekly Commodities Charts Newsletter

December 11, 2017

The Weekly Commodities Charts Newsletter provides Cornelius Luca's trade ideas, model signals, and absolute charts

© 2017 Luca Global Markets, LLC. All rights reserved. This content is provided as general information only and does not constitute investment advice or a representation that any investment, security or other product is suitable for any person. This content reflects the opinions only of the author and cannot be interpreted as advice.

This content is the intellectual property of Cornelius Luca. Any copying, distribution or redistribution of this content is expressly prohibited without the prior written consent of Cornelius Luca.

Cornelius Luca shall not be liable for any errors in the content, or for any actions taken in reliance thereon.

Trade Ideas

- Energy: Long crude oil *while above* the 21-day exponential moving average
- Metals: Short gold *while below* the 21-day exponential moving average
- Softs: Short wheat *while below* the 5-day exponential moving average

Commodities Models – Daily & Weekly

	<i>Commodity</i>	<i>Daily Model</i>	since	Daily Bias (> or < 21-day EMA)	Daily Risk	<i>Weekly Model</i>	since	Weekly Bias (> or < 21-week EMA)	Weekly Risk
Energy	Crude Oil	L	7-Dec	bullish	slightly bullish	L	11-Dec	bullish	bullish
	Brent Crude	L	7-Dec	bullish	bullish	L	11-Dec	bullish	bullish
	Natural Gas	L	11-Dec	slightly bearish	slightly bullish	S	4-Dec	slightly bearish	slightly bearish
Metals	Gold	S	4-Dec	bearish	bearish	S	29-Nov	slightly bearish	slightly bearish
	Silver	S	11-Dec	bearish	slightly bearish	S	23-Nov	slightly bearish	slightly bearish
	Copper	L	8-Dec	slightly bearish	slightly bullish	S	1-Dec	sideways	neutral
Softs	Coffee	S	4-Dec	bearish	slightly bearish	S	4-Dec	slightly bearish	slightly bearish
	Soy Meal	S	7-Dec	slightly bullish	slightly bearish	S	11-Dec	slightly bullish	slightly bearish
	Wheat	S	4-Dec	bearish	bearish	S	13-Nov	slightly bearish	bearish
	Corn	S	11-Dec	slightly bearish	slightly bearish	S	4-Dec	slightly bearish	slightly bearish

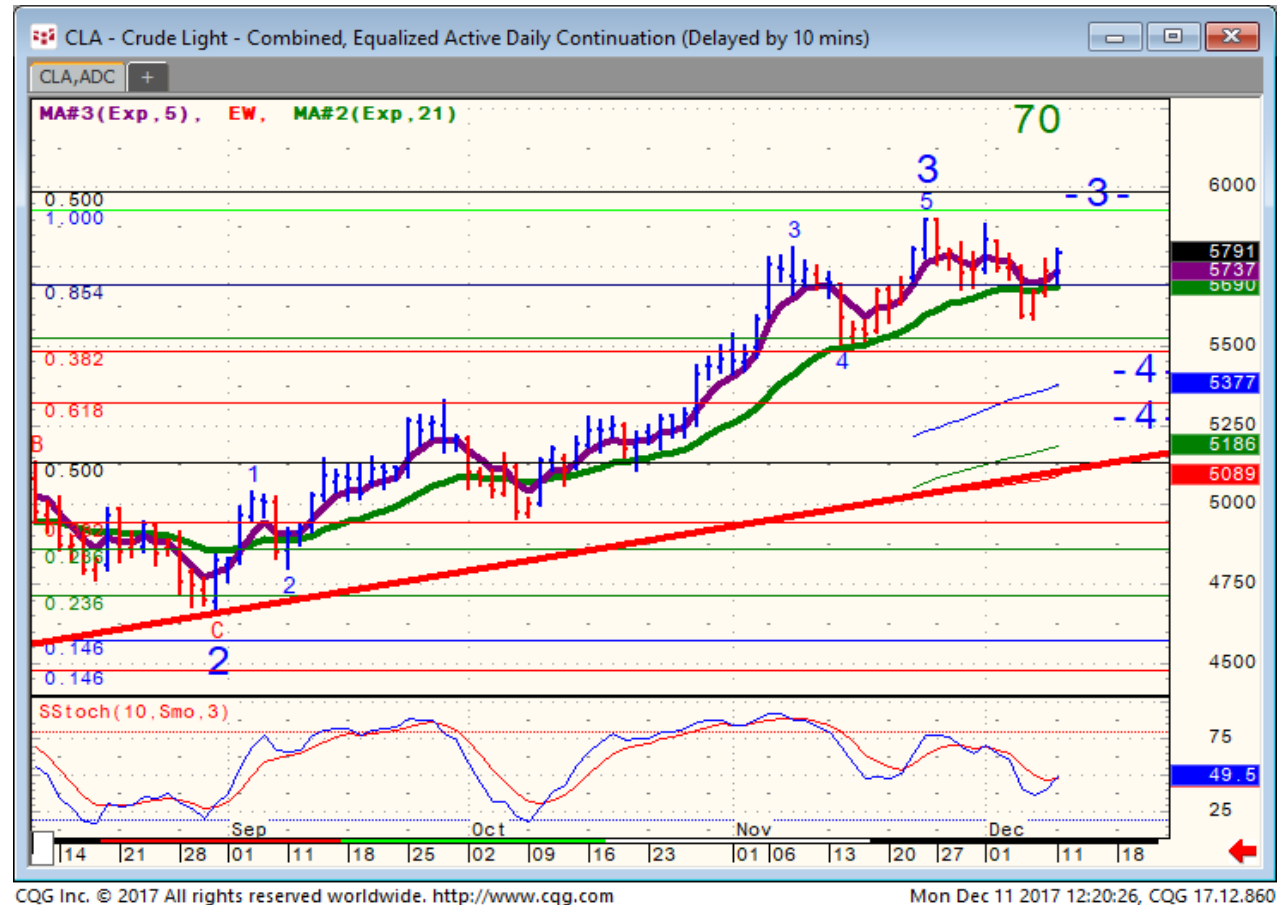
Source: Proprietary Luca Global Markets, LLC Model

Commodities Energy Trade Idea

Comment:

Long crude oil *while* above the 21-day EMA

- Crude oil is reversed from a 2 ½-week low, but still struggles to match the peak of 11/24
- It climbed back above the 5- & 21-day EMAs – if barely
- New information is needed
- Initial resistance: 59.05
- Further resistance: 60.07
- Initial support: 56.90
- Further support: 55.25, 54.84 & 53.17
- Fast stochastics: slightly bullish



Commodities Metals Trade Idea

Comment:

Short gold *while below the 5-day EMA*

- Bearish flag?
- Gold extended its collapse below its 21-day EMA to a near 5-month low
- In the process it smashed the bottom of a medium-term channel rising since 12/2016
- Only a break above 5-day EMA would trigger a bounce to the 21-day EMA
- Immediate support: 1,243
- Further support: 1,210
- Initial resistance: 1,254
- Further resistance: 1,283, 1,299, 1,339 & 1,358
- Fast stochastics: bearish



Soft Commodities Trade Idea

Comment:

Short wheat while below the 5-day EMA

- Wheat broke the support of a 16-month rising trend line and collapsed to a 1-year low
- It trades below its 5-day EMA & is oversold
- Immediate support: 389.75
- Further support: 369.50 & 359.50
- Initial resistance: 399.00
- Further resistance: 412, 432 & 462.75
- Fast stochastics: bearish



How to Use the Heat Map

Bias: If the Candle > 21-period EMA = bullish
 If the Candle < 21-period EMA = bearish
 If the Candle around 21-period EMA = sideways

Long or Short	Commodities	Since when		Risk: Bullish or Bearish Candle as of Monday am EST					
		Daily Model	since	Daily Bias (> or < 21-day EMA)	Daily Risk	Weekly Model	since	Weekly Bias (> or < 21-week EMA)	Weekly Risk
Energy	Crude (CLc1)	S	27-Apr	bullish	slightly bullish	L	23-Mar	slightly bearish	slightly bullish
	Brent (LCOc1)	L	21-Apr	slightly bullish	slightly bullish	L	6-Apr	slightly bearish	slightly bullish
	Natural gas (NGc1)	S	23-Apr	bearish	bearish	S	20-Apr	bearish	slightly bearish
	Palm oil (FCPOc1)	L	24-Apr	sideways	neutral	S	20-Apr	slightly bearish	slightly bearish
Metals	Gold (GCc1)	S	24-Apr	bearish	bearish	S	20-Mar	slightly bearish	slightly bearish
	Silver (SIc1)	S	22-Apr	bearish	bearish	S	24-Apr	bearish	bearish
	Platinum (PLc1)	S	20-Apr	bearish	bearish	S	20-Mar	bearish	slightly bullish
	Copper (HGc1)	L	24-Apr	slightly bearish	slightly bullish	S	24-Apr	slightly bearish	slightly bearish
Softs	Coffee (KCN5)	L	24-Apr	sideways	neutral	L	24-Apr	slightly bullish	slightly bullish
	Cocoa (LCCN5)	L	23-Apr	bullish	bullish	L	13-Apr	bullish	bullish
	Soy meal (SMN5)	S	24-Apr	bearish	slightly bearish	S	24-Apr	bearish	slightly bearish
	Wheat (WN5)	S	24-Apr	bearish	slightly bearish	S	24-Apr	bearish	bearish
	Corn (CN5)	S	20-Apr	bearish	bearish	S	6-Apr	bearish	bearish

Source: Proprietary Luca Global Markets, LLC Model

L = long
 S = short